

The RSL Auction Company



RSL Online - September Treasures

Saturday - September 23, 2023

RSL Online - September Treasures



1: Two Jr. Savings Banks Uncle Sam & Mr. Pig

USD 80 - 120

Unknown Maker. Most likely made in America circa 1950's. Made of wood and some tin. Uncle sams platform is 9" Wide. Mr. Pig's platform is 8 1/2" Wide. IMAGES COMING SOON!



2: Sentry Bank - Get Behind The Man

USD 80 - 120

Unknown Maker. Written above the doughboy: "Get Behind the Man, Behind The Gun!". When a coin is deposited a bell will chime when your coin strikes. Most likely made in America circa 1920's. Made of Wood, Glass and Aluminum. 6 1/4" Tall x 4 1/4" Wide x 3 1/4" Deep.



3: Three Cast Iron Building Banks

USD 150 - 200

Various American makers. Made of cast iron. 4 1/4" to 6" Tall.



4: Five Metal Still Banks

USD 80 - 120

Various makers. Sailor for Pilot Life Insurance. C. M Russell for Citizens Bank of Montana. Santa for "Santa's Village" Skyforest, Calif. Stadt-Sparkasse Krefeld (German 1930's). Made of various metals. 3" to 6 1/4" Tall.



5: Owl Turns Head - Cast Iron Mechanical Bank

USD 200 - 300

Made by J. & E. Stevens Company. Cromwell, Connecticut - circa 1880's. Made of Cast Iron. 7 1/2" Tall. Works well.



6: Two Chein Tin Mechanical Banks

USD 60 - 90

Made by J. Chein. Newark, New Jersey - circa 1930's. Made of Tin. 5 1/4" Tall.



7: Speaking Dog - Cast Iron Mechanical Bank

USD 300 - 400

Made by Shepard Hardware Company. Buffalo, New York - 1890's. Made of Cast Iron. Place a coin on the girls paddle, press the lever and she will instruct the dog to "speak" while the coin disappears into the bench. 7 1/4" Wide. Works well.



8: Paddy and the Pig - Cast Iron Mechanical Bank

USD 750 - 950

Made by J. & E. Stevens Company. Cromwell, Connecticut - Circa 1880's. Made of Cast Iron. Place a coin on the pigs nose, press the lever: the pig will kick the coin into Paddy's mouth as he sticks out his tongue. 8 1/4" Tall. Works well.

RSL Online - September Treasures



9: Creedmoor - Cast Iron Mechanical Bank

USD 250 - 350

Made by J. & E. Stevens Company. Cromwell, Connecticut - Circa 1870's. Made of Cast Iron. Cock the gun, he takes his aim, place the coin on the gun. Press his shoe down and he will fire your coin into the tree, BULLSEYE! 10" Wide. Works well.



10: Cat & Mouse - Cast Iron Mechanical Bank

USD 50 - 75

Made by Book of Knowledge. This bank has been made to look old. Made of Cast Iron. 8 1/4" Tall. Works well.



11: Presto - Cast Iron Mechanical Bank

USD 125 - 175

Made by Kyser & Rex Company. Philadelphia, Pennsylvania - Circa 1890's. Press the lever and the drawer pops out. Place your coin in the drawer. Push the drawer back in and PRESTO! your coin has disappeared. Made of Cast Iron. 4 1/2" Tall. Works well.



12: Trick Drawer Column - Wooden Mechanical Bank

USD 150 - 200

Most likely made in America - Circa 1890's. This bank comes from the Edwin Mosler Jr. Collection. Your typical trick drawer action. Made of Wood. 5 1/2" Tall. Works well.



13: Yellow Novelty Bank - Cast Iron Mechanical Bank

USD 1,200 - 1,800

Made by J. & E. Stevens Company. Cromwell, Connecticut - Circa 1870's. Made of Cast Iron. Open the door, place your coin on the man's tray, close the door and your coin will be deposited behind the lattice work. 6 3/4" Tall. Works well.



14: Trick Pony - Cast Iron Mechanical Bank

USD 75 - 125

Made by Book of Knowledge. Made of Cast Iron. Place your coin in the ponies mouth, pull the lever, the pony will drop the coin into his trough. 7" Wide. Works well.



15: Speaking Dog - Cast Iron Mechanical Bank

USD 75 - 125

Made by Shepard Hardware Company. Buffalo, New York - 1890's. Made of Cast Iron. Place a coin on the girls paddle, press the lever and she will instruct the dog to "speak" while the coin disappears into the bench. 7 1/4" Wide. Only the girl's arm is currently working, the dog does not speak or wag his tail.



16: Tammany - Cast Iron Mechanical Bank

USD 100 - 150

Made by the J. & E. Stevens Company. Cromwell, Connecticut - Circa 1870's. Made of Cast Iron. Place your coin in his hand, the weight of the coin will have him deposit your coin into his pocket. He will then nod his head in acknowledgement. 5 3/4" Tall. Works well.

RSL Online - September Treasures



17: Bill E Grin - Aluminum Mechanical Bank

USD 200 - 300

Probably made in America circa 1960's. This is a very well made copy of the Bill E. Gin Bank. Made of Aluminum. 4 1/4" Tall. Works well.



18: Little Fat Man - Cast Iron Mechanical Bank

USD 150 - 200

Made by the J. & E. Stevens Company. Cromwell, Connecticut - Circa 1870's. Made of Cast Iron. This is the much more scarce version of the "Tammany" bank. The side panels have no lettering and the trap is a circular coin trap instead of the screw down version. 5 3/4" Tall. Works well.



19: Clown on Globe - Cast Iron Mechanical Bank

USD 800 - 1,200

Made by J. & E. Stevens Company. Cromwell, Connecticut - Circa 1880's. Made of Cast Iron. First put the lever up, then twist the globe. Place your coin in the slot and press the lever down, the coin will deposit and the globe and clown will spin round and round. As a second action you can press the lever on the back of the globe, which will cause the clown to do a handstand. Works well.

Image unavailable

20: Rocket Bank - Aluminum Mechanical Bank

USD 15 - 30

Made by Astro Mfg. Company of America. Made of Aluminum. 11 1/4" Tall. Place your coin in the coin slot, press the lever and BAM! your coin is shot straight into the rocket. Works well.

Image unavailable

21: Chocolate Slot Machine - Tin Vending Bank

USD 50 - 75

Made in Great Britain - Circa 1930's. Made of Tin. 5 1/2" Tall. Works well.



22: Weeden's Plantation - Tin Mechanical Bank

USD 200 - 300

Made by Weeden's Manufacturing Company. New Bedford, Massachusetts - Circa 1880's. Made of Tin and Wood. Wind the bank, place a coin into the slot and one man will play the banjo while the other dances. 5 1/2" Tall. Works well.



23: Patriotic Novelty - Cast Iron Mechanical Bank

USD 300 - 400

Made by J. & E. Stevens Company. Cromwell, Connecticut - Circa 1870's. Made of Cast Iron. Open the door, place your coin on the man's tray, close the door and your coin will be deposited behind the lattice work. 6 3/4" Tall. Works well.

RSL Online - September Treasures



24: Organ with Dog and Cat - Cast Iron Mechanical Bank

USD 300 - 400

Made by Kyser & Rex Company. Philadelphia, Pennsylvania - Circa 1880's. Made of Cast Iron. Place your coin on the monkey's tray. Turn the lever, bells will chime while the dog and cat dance and the monkey deposits your coin. 7 1/2" Tall. Works well.



25: Bad Accident - Cast Iron Mechanical Bank

USD 600 - 800

Made by J. & E. Stevens Company. Cromwell, Connecticut - Circa 1890's. Made of Cast Iron. Place your coin between the man's legs. Press the lever and the boy will jump from behind the bushes, scaring the donkey. The man and cart will topple backwards, causing your coin to be deposited. 10" Long. Works well.



26: Paddy and the Pig - Cast Iron Mechanical Bank

USD 400 - 600

Made by J. & E. Stevens Company. Cromwell, Connecticut - Circa 1880's. Made of Cast Iron. Place a coin on the pig's nose, press the lever: the pig will kick the coin into Paddy's mouth as he sticks out his tongue. 8 1/4" Tall. Works well.



27: Crown - Cast Iron Still Bank

USD 200 - 300

Made by J. & E. Stevens Company. Cromwell, Connecticut - Circa 1870's. Made of Cast Iron. 5 1/4" Tall.



28: New Bank Sans Leg - Cast Iron Still Bank

USD 400 - 600

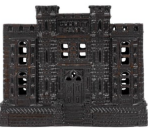
American - Circa 1870's. Made of Cast Iron. 5 1/4" Tall. From the Edwin Mosler Jr. Collection.



29: "Bank" - Cast Iron Still Bank

USD 200 - 300

Made by Grey Iron Casting Company. Mount Joy, Pennsylvania - 1890's. Made of Cast Iron. 5 3/4" Tall.



30: County - Cast Iron Still Bank

USD 100 - 150

Made by John Harper Ltd. Willenhall, England - Circa 1900. Made of Cast Iron. 4 1/4" Tall.



31: Crown on Legs - Cast Iron Still Bank

USD 400 - 500

Made in America - Circa 1870's. Made of Cast Iron. 4 3/4" Tall.

RSL Online - September Treasures



32: Home Savings with Cub Finial - Cast Iron Still Bank

USD 100 - 200

Made by J. & E. Stevens. Cromwell, Connecticut - Circa 1890's. Made of Cast Iron. 6" Tall.



33: State & Crown - Cast Iron Still Banks

USD 150 - 250

State Bank - Straight Letters: Made by Kyser & Rex. Crown Bank - Medium: Made by J. & E. Stevens Company. Made of Cast Iron. 3 5/8" to 4 1/2" Tall.



34: Two Grandfather Clock - Still Banks

USD 150 - 250

Smaller Clock: Made by C. B. Fenster of Lancaster, Pennsylvania. Larger Clock: Made in America - Circa 1940's. Taller made of Cast Iron, Smaller Aluminum.



35: English Birth Bank

USD 40 - 60

Made in England - Circa 1880's. Made of Sheet Steel and Brass. 7 1/2" Tall.



36: Three Domed Building - Cast Iron Still Banks

USD 40 - 60

Made by A. C. Williams. Ravenna, Ohio - Circa 1910's. Made of Cast Iron. 4 7/8" Tall.



37: Columbian Administration - Cast Iron Still Bank

USD 250 - 350

Made by Kenton Hardware Company. Kenton, Ohio - Circa 1890's. Made of Cast Iron. 8 3/4" Tall. From the William Werbell Collection.



38: Rare Roosevelt Bust - Still Bank

USD 100 - 150

American - Circa 1930's. Tiny plaque below coin slot reads, "Home of Franklin D Roosevelt, Hyde Park. N. Y.". Made of Pot Metal with Tin Trap. 6 1/4" Tall.



39: Mammy & U. S. Mail Box - Cast Iron Still Banks

USD 80 - 120

Made by Hubley Mfg. Company. Lancaster, Pennsylvania - Circa 1930's. Made of Cast Iron. 3 3/4" to 5 1/4" Tall.

RSL Online - September Treasures



40: Stag & Bismark Pig - Stil Banks

USD 75 - 125

Stag: Made by A. C. Williams - Circa 1915. Bismark Pig: Made in America - Circa 1880's. The stag is made of Cast Iron, the Bismark is made of Brass. Stag 6" Tall. Bismark 7 1/4" Long.



41: Four Still Banks

USD 50 - 75

Includes: Amish House, Presto (2) and Orange County Trust Savings Bank. Made of Cast Iron, Aluminum and Sheet Steel.



42: Three Figural Still Banks

USD 50 - 75

Made by A. C. Williams / Hubley. Made of Cast Iron.



43: Four Animal Still Banks

USD 75 - 125

Made in America. Made of Cast Iron.



44: Four Modern - Cast Iron Mechanical Banks

USD 100 - 200

Includes: Acrobat, Birdie Putt, Pirate Skeleton and Woodcutter.



45: Four Ceramic Still Banks

USD 100 - 200

European - Circa 1920's. 3 1/4" to 4 1/2" Tall.



46: Four Ceramic Still Banks

USD 100 - 200

European - Circa 1920's. 4" to 5 1/2" Tall.



47: Three Ceramic Pig Still Banks

USD 175 - 225

European - 1910's. Pig on right Jacob Marius (JM). 4 3/4" to 6 1/2" Tall.

RSL Online - September Treasures



48: Three Ceramic Pig Still Banks

USD 225 - 275

European - 1910's. Bust of a Pig - Bernard Bloch (BB). 2 1/4" to 5 3/4" Tall.



49: Four Ceramic Still Banks

USD 100 - 200

European - 1920's/1930's. 2 1/2" to 4 1/4" Tall.



50: Four Ceramic Still Banks

USD 100 - 200

European - 1920's/1930's. 3 1/4" to 5 1/4" Tall.



51: Four Ceramic Still Banks

USD 100 - 200

European - 1920's/1930's. 2 3/4" to 3 3/4" tall.



52: Three Ceramic Still Banks

USD 125 - 175

European - 1920's/1930's. 4" to 4 1/2" tall.



53: Four Military Themed Ceramic Still Banks

USD 150 - 200

European - 1920's/1930's. 4 3/4" to 5 1/2" Tall.



54: Four Military Themed Ceramic Still Banks

USD 150 - 200

European - 1920's/1930's. 5 1/4" to 6 1/2" Tall.



55: Three Bust Ceramic Still Banks

USD 100 - 150

European - 1920's/1930's. The woman in blue is a rarity. 5 1/4" to 5 3/4" Tall.

RSL Online - September Treasures



56: Ethiopian Bust of a Man Ceramic Still Bank

USD 50 - 75

European - 1920's. 7 1/4" Tall.



57: Three Ceramic Banks

USD 50 - 75

European - 1930's. 1 3/4" to 2 3/4" Tall.



58: Three Ceramic Banks

USD 50 - 75

Germany - 1920's. 4" to 4 1/4" Tall.



59: Prudential Registering Cast Iron Bank

USD 150 - 250

American - Dated 1890. This bank came in three versions, nickel, dime and quarter. This is the nickel version. 7 1/4" Tall. Made of Cast Iron. Part of the William Werbell Collection.



60: Elephant with Howdah - Cast Iron Mechanical Bank

USD 100 - 175

Made by Enterprise Mfg. Company. Philadelphia, Pennsylvania - 1880's. Made of Cast Iron. 6 1/2" Long. Set the back, press the lever on the back of the elephant. The man will burst from his hiding place and the elephant will deposit your coin. Works well. Part of the William Werbell Collection.



61: Novelty - Cast Iron Mechanical Bank

USD 300 - 500

Made by the J. & E. Stevens Company. Cromwell, Ct. - Pat.'d Oct. 28, 1873. Made of Cast Iron. 6 3/4" Tall. To operate the Novelty Bank, you must firmly pull the doorknob towards you. The teller will then appear with his tray to receive your coin. Upon releasing the knob, the powerful spring-activated door will quickly snap shut to effectuate your deposit. Works well. Part of the William Werbell Collection.



62: Monkey - Cast Iron Mechanical Bank

USD 200 - 275

Hubley Mfg. Company. Lancaster, PA - 1930's. Made of Cast Iron. Works well. Part of the William Werbell Collection.

RSL Online - September Treasures



63: Songbird - Cast Iron Doorstop

USD 40 - 60

American - 1920's. Made of Cast Iron. 5 3/4" Tall. Part of the William Werbell Collection



64: Large Standing Rabbit - Cast Iron Mechanical Bank

USD 200 - 300

Made by Lockwood Mfg. Company. South Norwalk, Connecticut - 1890's. Made of Cast Iron. Place your coin in the ball held in the rabbit's paws. Pressing his tail causes his ears to move forward as the penny is deposited. Works well. 7 1/2" Tall. Part of the William Werbell Collection.



65: Monkey and Coconut - Cast Iron Mechanical Bank

USD 400 - 600

Made by J. & E. Stevens Company. Cromwell, Connecticut - Late 1880's. Made of Cast Iron. The imagery for this bank was inspired by the controversial debate that arose after Darwin's publication of The Origin of Species. The monkey is depicted with an opposable thumb and his demeanor is clearly marked with great charm and intellect. After all, he outwits us and grabs our coins with each playing of the bank. Works well. Part of the William Werbell Collection.



66: Cat & Mouse - Cast Iron Mechanical Bank

USD 400 - 600

Made by J. & E. Stevens Company. Cromwell, Connecticut - Ca. 1891. Made of Cast Iron. The design for the Cat & Mouse Bank is based on a Victorian mantle clock form. For certainly, the bank's imagery draws from the English nursery rhyme "Hickory, Dickory Dock". In this telling of the story, the cat and mouse play together. Works well. Part of the William Werbell Collection.



67: Pay Phone - Cast Iron Bank

USD 100 - 150

Made by J. & E. Stevens Company. Cromwell, Ct. - 1920's. Made of Cast Iron and Tin. The bell chimes.



68: Two Frogs - Cast Iron Mechanical Bank

USD 400 - 600

Made by J. & E. Stevens Company. Cromwell, Connecticut - 1880's. Made of Cast Iron. Works well. Part of the William Werbell Collection.



69: Santa at Chimney - Cast Iron Mechanical Bank

USD 300 - 400

Made by Shepard Hardware Company. Buffalo, New York 1889. Made of Cast Iron. Place a coin in Santa's hand. Depress the lever and he deposits it into the chimney. Works well. Part of the William Werbell Collection.

RSL Online - September Treasures



70: Pig in High Chair - Cast Iron Mechanical Bank

USD 250 - 350

Made by J. & E. Stevens Company. Made of Cast Iron. Cromwell, Connecticut - Circa 1897. Works well. Part of the William Werbell Collection.



71: Dog on Turntable - Cast Iron Mechanical Bank

USD 350 - 450

Made by H. L. Judd Mfg. of Wallingford, CT - 1895. Made of Cast Iron. Turn the crank and the dog enters the building and deposits the coin. Works well. Part of the William Werbell Collection.



72: Standing Bulldog - Cast Iron Mechanical Bank

USD 200 - 400

Made by H. L. Judd Company. Wallingford, Connecticut - 1880's. Made of Cast Iron. Place your coin on his tongue, lift his tail and he will gobble up your coin. Works well. Part of the William Werbell Collection.



73: Bear Hugs Tree - Cast Iron Mechanical Bank

USD 400 - 500

Made by the H. L. Judd Company. Wallingford, Connecticut - Late 1880's. Made of Cast Iron. Place your coin on his tongue, press the lever and he will swallow your coin. Works well. Part of the William Werbell Collection.



74: Owl Slot in Book - Cast Iron Mechanical Bank

USD 200 - 300

Made by Kilgore Mfg. Company. Westerville, Oh. - 1930's. Made of Cast Iron. Place a coin in his book and his eyes will roll. Works well. From the Griffith Collection to the William Werbell Collection.



75: Zentralsparkasse Bank

USD 50 - 75

German - 1910's. Made of Sheet Metal. Press in the lever, rest your coin, release and your coin will fall into the bank. Works well. Part of the William Werbell Collection.



76: Chimpanzee Wobble Jaw - Mechanical Bank

USD 100 - 150

French - 1890's. Made of White Metal. Works well.



77: Hall's Excelsior - Cast Iron Mechanical Bank

USD 75 - 125

Made by the J. & E. Stevens Company. Cromwell, CT - 1870's. Made of Cast Iron. Currently not working.

RSL Online - September Treasures



78: Trick Pony - Cast Iron Mechanical Bank

USD 300 - 400

Shepard Hardware Company. Buffalo, NY - 1890's. Made of Cast Iron. The Trick Pony Bank is one of the most visually appealing toy banks ever created. It was a popular mainstay from Shepard's "Excelsior Series". Works well. Part of the William Werbell Collection.



79: Medium Organ - Cast Iron Mechanical Bank

USD 150 - 200

Made by Kyser & Rex Company. Philadelphia, Pennsylvania - Circa 1880's. Made of Cast Iron. Currently partially working. Part of the William Werbell Collection.



80: Boy on Trapeze - Cast Iron Mechanical Bank

USD 500 - 700

Made by J. Barton Smith Company. Philadelphia, Pennsylvania - Ca. 1888. Made of Cast Iron. The weight of different sized coins, coupled with the law of gravity, causes the trapeze artist to make varying numbers of revolutions on his bar. Works well. Part of the William Werbell Collection.



81: Bulldog - Cast Iron Mechanical Bank

USD 200 - 300

Made by J. & E. Stevens Company. Cromwell, Connecticut - Ca. 1880. Made of Cast Iron. This clever canine carefully balances coins on the tip of his nose before he gobbles them up. Works sluggishly. Part of the William Werbell Collection.



82: Mule Entering Barn - Cast Iron Mechanical Bank

USD 400 - 600

Made by J. & E. Stevens Company. Cromwell, Connecticut - Early 1880's. Made of Cast Iron. Coins placed between the mule's hind legs are deposited when the operating button is pushed. As the mule flips over and into the barn, a small dog runs out from beneath the floorboards. Works well. Part of the William Werbell Collection.



83: Trick Dog Six Part Base, Rare Color - Cast Iron Mechanical Bank

USD 300 - 500

Made by the Hubley Mfg. Company. Lancaster, Pennsylvania - Circa 1900. Made of Cast Iron. Works well. Part of the William Werbell Collection.



84: Lion and Monkeys - Cast Iron Mechanical Bank

USD 700 - 900

Double Peanut Tree Knot Variant. Made by the Kyser and Rex Company. Philadelphia, Pennsylvania - Circa 1880's. Made of Cast Iron. A mother and her infant evade the powerful jaws of the lion by scrambling up the bark of a tree. They placate his hunger by feeding him coins that drop from the adult monkey's right hand into his mouth. Works well. Part of the William Werbell Collection.

RSL Online - September Treasures



85: Teddy and the Bear - Cast Iron Mechanical Bank

USD 700 - 900

Made by the J. & E. Stevens Company. Cromwell, Ct. - Circa 1910. Made of Cast Iron. The imagery portrayed in this remarkable bank draws from an actual incident from Teddy's adventurous life. While hunting for bear in the south, Roosevelt exhibited great compassion for the well-being of an injured and sick bear, giving him a reputation as animal rights advocate. Works well. Part of the William Werbell Collection.



86: Boy Robbing Birds Nest - Salafian - Cast Iron Mechanical Bank

USD 800 - 1,000

Made by the Salafian Brothers. Philadelphia, Pennsylvania - Circa 1930's. Made of Cast Iron. Works well. Part of the William Werbell Collection.



87: Three Modern Cast Iron Mechanical Banks

USD 150 - 250

Includes: Golfer, Bowler and Fisherman. Made of Cast Iron. Work well.



88: Cottage Money Box Bank with Original Box

USD 100 - 200

Made by Chad Valley of England - Circa 1950's. Made of Tin. Works well. Part of the William Werbell Collection.



89: Monkey with Tray - Tin Mechanical Bank

USD 150 - 250

Made by Saalheimer and Strauss. Nurnberg, Germany - Circa 1908. Made of Tin. Place your coin on his tray, press the lever and he will gobble it up. Works well. Part of the William Werbell Collection.



90: Two Tin Mechanical Banks

USD 200 - 300

Fun Producing Savings Bank made by the Silver Mirror Company. Neapolitan Automatic Chocolate Machine made by Peter Pan of England. Both made of Tin. Both work well. Part of the William Werbell Collection.



91: Two Tin Mechanical Vending Banks

USD 125 - 175

Stollwerck Gold and Oval Window. Made in Germany - 1920's. Made of Tin. Part of the William Werbell Collection.

RSL Online - September Treasures



92: Two Tin Mechanical Vending Banks

USD 200 - 300

Pascall Vending and Leu Vending Banks. Made in Germany - 1920's. Made of Tin. Part of the William Werbell Collection.



93: Two Tin Mechanical Vending Banks

USD 200 - 300

Driver Service Satisfies Savings Bank and Oval Window Pretzel Tree. Made in Germany - 1920's. Made of Tin. Part of the William Werbell Collection.



94: Captain Kidd - Cast Iron Still Bank

USD 200 - 250

Made by Ives, Blakeslee Co. Bridgeport, Connecticut - 1895. Made of Cast Iron. Part of the William Werbell Collection.



95: Large Donkey & Bear with Honey Pot - Cast Iron Still Banks

USD 175 - 225

Large Donkey - A. C. Williams - 1910's - 6 1/2" Long. Bear with Honey Pot - Hubley - 1930's - 6 1/2" Tall. Made of Cast Iron. Part of the William Werbell Collection.



96: U. S. Mail & Middy - Cast Iron Still Banks

USD 100 - 150

U. S. Mail - Hubley - 1920's - 3 1/2" Tall. Middy - Ives, Blakeslee - 1890's - 1/4" Tall. Made of Cast Iron. Part of the William Werbell Collection.



97: 1776 Liberty Bell - Cast Iron Still Bank

USD 50 - 75

American - 1876 - 4 3/4" Tall. Cast Iron on Wood Base. Part of the William Werbell Collection.



98: Two Safe Banks

USD 75 - 125

Tiny Mite Bank Safe - Arrow Specialties - 3 1/2" Tall (Aluminum). State Safe - Kenton - 1930's - 4 1/4" Tall (Iron and Tin). Part of the William Werbell Collection.



99: Two Cast Iron Safe Banks

USD 75 - 125

Security Safe Deposit - Kenton Hardware - 4 3/4" Tall. White City No. 10 Puzzle Safe - Nicol & Company - 4 1/4" Tall. Made of Cast Iron. Part of the William Werbell Collection.

RSL Online - September Treasures



100: Five Metal Still Safe Banks

USD 100 - 150

Various makers. Includes: Child's Safe, The Strongest Safe in the World (Bank of Black Creek, Black Creek, Wis.), Tiny Tin Safe, Broadway Savings Bank and Time lock Safe. 3" to 5 1/2" Tall. Part of the William Werbell Collection.



101: Three Metal Safe Still Banks

USD 150 - 200

Various makers. Includes: C R Safe (Blescdec. France.), Goody Vault Combination Savings Bank and Coffee Lion Safe (Has Key). 3 1/4" to 6 1/2" Tall. Part of the William Werbell Collection.



102: Four Cast Iron Safe Still Banks

USD 150 - 200

Home Safe - Grey Iron Casting Company - 3 1/4" Tall. Tiny Mite Bank Safe - Arrow Specialties - 3 1/2" Tall (Aluminum). GCC Safe Co 1998 - The Genera Casting Co. - 4" Tall. Scroll Safe - J. & E. Stevens Company - 3 1/4" Tall. Part of the William Werbell Collection.



103: Two Cast Iron Safe Banks

USD 50 - 75

Columbus Safe - American - 5 1/2" Tall (Cast Iron and Tin). Home Savings Bank - Kenton Hardware - 5 1/2" Tall. Part of the William Werbell Collection.



104: Two Cast Iron Safe Banks

USD 50 - 75

No. 10 White City Puzzle Safe - Nicol & Company - 4 1/4" Tall. SBBCA Save - 1997 - 4 1/4" Tall. Part of the William Werbell Collection.



105: Two Cast Iron Safe Banks

USD 50 - 75

Eureka Trust and Savings Bank - Mudd Mfg. Company - 5 3/4" Tall. Security Safe Deposit - Kyser & Rex - 5 1/2" Tall.



106: Two Cast Iron Safe Banks

USD 100 - 150

Japanese Safe - Kyser & Rex - 5 1/4" Tall. New York National Bank / Chicago Savings Bank - Kenton Hardware Company - 6" Tall.



107: Coin Deposit Bank - Cast Iron Safe Bank

USD 150 - 200

Made by Grey Iron Casting Company. Mount Joy, Pennsylvania - 1920's. Made of Cast Iron. 8" Tall. Part of the William Werbell Collection.

RSL Online - September Treasures



108: Two Cast Iron Safe Banks

USD 150 - 200

Ideal Security Safe - American - 5 1/2" Tall. Horse Head Safe - Kenton Hardware Company - 7 1/2" Tall.



109: Three Barrel Shaped Cast Iron Still Banks

USD 75 - 125

White City Puzzle No. 12 - Nicol & Company - 3 3/4" Tall. Dime Register Barrel - American - 4" Tall. 3 Coin Registering Bank - Piaget Novelty Company - 4" Tall (Tin).



110: Two Cast Iron Still Banks

USD 125 - 175

Bean Pot Nickel Register - American - 3" Tall. Industrial Bank - Marked M2W I - 4 1/4" Tall. Part of the William Werbell Collection.



111: Prudential Registering Cast Iron Bank

USD 150 - 250

American - Dated 1890. This bank came in three versions, nickel, dime and quarter. This is the nickel version. 7 1/4" Tall. Made of Cast Iron. Part of the William Werbell Collection.



112: Two Brass Toned Still Banks

USD 50 - 75

Pig on Stump - Marked 1944 on Pig - 5" Tall. Cowboy Boot - American - 4 3/4" Tall.



113: Two Nutcracker - Cast Iron Banks

USD 50 - 75

SBCCA 1982 Nutcracker Banks. Made of Cast Iron. 7 1/2" Tall. Part of the William Werbell Collection.



114: Geisha on Pillow - Cast Iron Bank

USD 50 - 75

Made by Hubley Mfg. Company. Lancaster, Pennsylvania - Circa 1930's. Made of Cast Iron. 7" Tall. Part of the William Werbell Collection.



115: Four Cast Still Banks

USD 100 - 150

Dutch Boy & Girl - Made by Hubley Mfg. Company - 5 1/2" Tall. Baby in Cradle (2) - American - Circa 1960's - 3 3/4" Long (Made of Cast Iron and Tin). Part of the William Werbell Collection.

RSL Online - September Treasures



116: Three Figural Cast Iron Still Banks

USD 150 - 200

Mammy - American - 5" Tall (Aluminum). Mammy with Spoon - A. C. Williams - 5 3/4" Tall. The Young Man Bank - Sydenham & McOustra - 4 1/2" Tall. Part of the William Werbell Collection.



117: Four Bird Still Banks

USD 150 - 200

Donald Duck - Walt Disney - 6" Tall (Paper Mache). Peacock - European - 5 1/4" Tall (Ceramic). Cockatoo - American - 5 1/2" Tall (Pot Metal). Red Goose School Shoes - Arcade - 3 3/4" Tall. Part of the William Werbell Collection.



118: Four Lion Still Banks

USD 75 - 125

American - 1910's/1930's. Three Lion tail rights (cast Iron). Harris Trust Lion (Pot metal).



119: Five Lion Still Banks

USD 100 - 150

American - 1910's/1930's. Four Lions (Cast Iron). One Lion (Pot Metal).



120: Three Lion Cast Iron Still Banks

USD 75 - 125

American - 1920's. Made of Cast Iron. 4 3/4" to 5" Long. Part of the William Werbell Collection.



121: Quilted Lion - Cast Iron Still Bank

USD 150 - 250

Made by Ober Mfg. Company. Chagrin Falls, Ohio - Circa 1910's. Made of Cast Iron. 5 1/4" Long. Part of the William Werbell Collection.



122: Four Elephants - Cast Iron Still Banks

USD 100 - 150

American - 1910's/1920's. Made of Cast Iron. 3 1/4" to 6 1/2" Long. Part of the William Werbell Collection



123: Three Elephants - Still Banks

USD 150 - 200

American - 1910's/1930's. Elephant swing trunk - 7" Long - Cast Iron. Worcester Salt Elephant - 4 1/2" Tall - Pot Metal. Gar - Ru Elephant - 8 1/2" Long - Aluminum. Part of the William Werbell Collection

RSL Online - September Treasures



124: Three Elephants - Cast Iron Still Banks

USD 175 - 225

Elephant Swings Trunk Large - A. C. Williams - 6 3/4" Long. Elephant Swings Trunk Small - A. C. Williams - 5" Long. Elephant with Raised Coin Slot - Kenton Hardware Company - 6 1/2" Long. Part of the William Werbell Collection.



125: Five Building - Still Banks

USD 100 - 150

Various Makers. Pot Metal, Tin and Aluminum. 3 1/2" to 5" Long. Part of the William Werbell Collection.



126: Four Building - Still Banks

USD 100 - 150

Three Woolworth Buildings and one Empire State Building. Two Cast Iron, Two Pot Metal. 4" To 8" Tall. Part of the William Werbell Collection.



127: Four Still Banks

USD 50 - 75

Includes: Proclaim Liberty Bank, Will Rogers Savings Bank, Two Car Bank and Syracuse Savings Bank. Made of Pot Metal and Lead. The car is 5" Long and the others are 4 3/4" to 5 1/2" Tall.



128: Recording - Cast Iron Registering Bank

USD 75 - 125

Magic Introduction Company. New York - 1891. Made of Cast Iron. Works. Part of the William Werbell Collection.



129: Four Pot Metal Still Banks

USD 75 - 125

Durable Toy/Bantherico. Widest 5" Wide. Tallest 6 1/2" Tall. Part of the William Werbell Collection.



130: Owl and Two Shoes - Still Banks

USD 75 - 125

Owl Marked Italian. Shoes probably German. Made of Tin and Pot Metal. The owl is 5" Tall. The shoes are 5 1/4" to 6" Long. Part of the William Werbell Collection.



131: Piano Jewelry Box and Music Box.

USD 75 - 125

Both marked "Made in Occupied Japan". Made of Pot Metal. 3 1/4" to 4 1/4" Long. Works well. Part of the William Werbell Collection.

RSL Online - September Treasures



132: Two Airplane - Still Banks

USD 150 - 200

Spirit of Saving - 8" Long x 9 1/2" Wingspan. The First National Bank Airplane - 8" Long with a 6 1/4" Wingspan. Part of the William Werbell Collection.



133: Royal - Cast Iron Still Bank

USD 100 - 150

Made by Chamberlain & Hill. England - Circa 1910. Made of Cast Iron. 5 1/2" Wide. Part of the William Werbell Collection.



134: Our Empire - Cast Iron Still Bank

USD 80 - 120

Made by Sydenham & McOustra. England - Circa 1911. Made of Cast Iron. 6 1/2" Tall. Part of the William Werbell Collection.



135: Bears and Honey Bees - Cast Iron Still Bank

USD 80 - 120

Made by Sydenham & McOustra. England - Circa 1910. Made of Cast Iron. 7" Tall. Part of the William Werbell Collection.



136: Our Empire - Cast Iron Still Bank

USD 80 - 120

This example with no date cast on the bank. Made by Sydenham & McOustra. England - Circa 1911. Made of Cast Iron. 6 1/2" Tall. Part of the William Werbell Collection.



137: Three Tin - Still Banks

USD 60 - 80

Includes: Little Red Riding Hood Book, Treasure Island Book and Chimney Banks. Made of Tin. 5 3/4" to 6 1/4" Tall. Part of the William Werbell Collection.



138: Two Tin Mechanical Banks

USD 100 - 150

Red - Mill Savings Bank - Cragstan - 5 1/2" Tall. Birdhouse Bank - Marked "Made in Western Germany" - 5 1/2" Tall. Both made of Tin. Work well. Part of the William Werbell Collection.



139: 100th Anniversary of the Battle of Gettysburg - Cast Iron Still Bank

USD 50 - 100

Wonderfully painted bank. Made of Cast Iron. 7 1/4" Wide. Part of the William Werbell Collection.

RSL Online - September Treasures



140: Six Registering Banks

USD 50 - 75

Includes: Hotpoint Electric Refrigerators, How to Accumulate Wealth, Every House Needs Westinghouse, Baby's Bank, The Dollar Savings Bank and Sun Thrift Plan Saves & Insures Banks. 3 1/2" to 5 1/4" Tall. Part of the William Werbell Collection.



141: Four Kilgore Cast Iron Toys

USD 75 - 125

Includes: Three Strollers and a Bathtub. Made of Cast Iron. Part of the William Werbell Collection.



142: Three Vehicle Toys

USD 75 - 125

Arcade Tractor - 3 1/2" Long (Cast Iron). Barclay Milk Truck - 3 1/2" Long (Lead). American Futuristic Automobile - 3 1/2" Long (Cast Iron). Part of the William Werbell Collection.



143: Two Cast Iron Stick Bell Toys

USD 100 - 150

Double Head Toy - Gong Bell - 7 1/4" Long. Racing Horse Toy - Watrous - 7" Long (Tin Wheels). Part of the William Werbell Collection.



144: Two Bell Toys

USD 100 - 150

Watrous Company. Made of Tin and Cast Iron. Includes an Elephant and Horse & Jockey. 6 1/2" to 7 1/4" Long. Part of the William Werbell Collection.



145: Watrous Two Clown Bell Toy

USD 75 - 125

Watrous Company. Made of Tin and Cast Iron. 10 1/4" Wide. Part of the William Werbell Collection.



146: Watrous Horse Pulling Bell Toy

USD 100 - 150

Watrous Company. Made of Tin and Cast Iron. 8 3/4" Long. Part of the William Werbell Collection.



147: Hubley Football Place Kicker Toy

USD 100 - 150

Made by Hubley Company. Lancaster, Pennsylvania - Circa 1920's. Made of Tin and Cast Iron. 8" Tall. Works well. Part of the William Werbell Collection.

RSL Online - September Treasures



148: Wilkins Articulated Monkey Stick Toy - Cast Iron

USD 125 - 175

Made by Wilkins Hardware Company. Made of Cast Iron. 6 1/2" Tall. Works well. Part of the William Werbell Collection.



149: Wilkins Articulated Horse & Jockey Stick Toy - Cast Iron

USD 200 - 300

Made by Wilkins Hardware Company. Made of Cast Iron. Horse is 7" Long. Works well. Part of the William Werbell Collection.



150: Bear Stick and Bell Toy - Cast Iron

USD 100 - 150

Made by Gong Bell Company. Made of Tin and Cast Iron. Metal part of toy is 4" Tall. Works well. Part of the William Werbell Collection.



151: Four Automotive Toys

USD 75 - 125

Various Makers. Made of Lead and Tin. 3 1/4" to 6" Long. Part of the William Werbell Collection.



152: Four Tootsie Toy Buses

USD 75 - 125

Made by Tootsie Toy. Made of Tin. 5 3/4" to 6" Long. Part of the William Werbell Collection.



153: Two Arcade Cast Iron Buses

USD 200 - 300

Made by Arcade. Made of Cast Iron. 6 3/4" to 11 1/2" Long. Part of the William Werbell Collection.



154: Two Arcade - New York World's Fair Trams

USD 100 - 150

Made by Arcade. Made of Cast Iron. 6 3/4" to 8 1/4" Long. Made of Cast Iron. Part of the William Werbell Collection.



155: Pullman Train and Greyhound Bus Toys

USD 100 - 150



Greyhound Bus - Realistic Toy Company - 8 1/2" Long (Aluminum). Pullman Railplane - Arcade - 8 3/4" Long (Cast Iron). Part of the William Werbell Collection.

RSL Online - September Treasures



156: Kenton Patrol Truck

USD 75 - 125

Made by Kenton Hardware Company. Made of Cast Iron. 6 1/2" Long. Part of the William Werbell Collection.



157: Two Door Sedan - Cast Iron Toy

USD 200 - 300

Possibly Grey Iron Casting Company. Mount Joy, Pennsylvania - Circa 1920's. Made of Cast Iron. 8 1/4" Long. Part of the William Werbell Collection.



158: Hubley Automotive Fire Pumper Truck

USD 150 - 200

Made by Hubley Company. Made of Cast Iron with Rubber Tires. 11 1/4" Long. Bell Rings when rolled. Part of the William Werbell Collection.



159: Hubley Automotive Fire Pumper Truck with Cast Iron Wheels

USD 175 - 225

Made by Hubley Company. Made of Cast Iron. 11 1/4" Long. Part of the William Werbell Collection.



160: 10 Tin Still Banks

USD 100 - 150

Various Makers. Made of Tin. 3" to 5" Tall. Part of the William Werbell Collection.



161: Early Cast Iron Toy Cannon

USD 50 - 75

Marked "7 - FB". Made of Cast Iron. 9 1/2" Long. Part of the William Werbell Collection.



162: Rapid Fire Cannon - Cast Iron Toy

USD 50 - 75

Made by Kenton Hardware Company. Made of Cast Iron. 5 1/2" Long. Works well. Part of the William Werbell Collection.



163: 3 Animal Drawn Carts - Cast Iron Toys

USD 75 - 125

Various Makers. Made of Cast Iron. Red Cart is tin. 4 3/4" to 6 1/2" Long. Part of the William Werbell Collection.

RSL Online - September Treasures



164: Buster Brown & Tige Cart - Cast Iron Toy

USD 100 - 150

Made by Kenton Hardware Company. Made of Cast Iron and Tin (Cart). 7 1/4" Long. Part of the William Werbell Collection.



165: Single Horse Ice Wagon - Cast Iron Toy

USD 100 - 150

Made by Hubley Company. Made of Cast Iron. 10 1/2" Long. Part of the William Werbell Collection.



166: Kenton Overland Circus Polar Bear Wagon - Cast Iron Toy

USD 200 - 300

Made by Kenton - Circa 1930's. Made of Cast Iron. 13 1/2" long. Part of the William Werbell Collection.



167: Fire Patrol - Cast Iron Toy

USD 200 - 250

Made by Ives, Blakeslee Co. Bridgeport, Connecticut - 1895. Made of Cast Iron. 21" Long. Part of the William Werbell Collection.



168: Three Horse Hook & Ladder - Cast Iron Toy

USD 200 - 300

Made by Wilkins Hardware Company. Made of Cast Iron. 30" Long. Part of the William Werbell Collection.



169: Two Horse Fire Pumper - Cast Iron Toy.

USD 250 - 350

Made of Cast Iron. 21" Long. Part of the William Werbell Collection.



170: City Bank - Cast Iron Still Bank

USD 300 - 400

Made by J. & E. Stevens Company. Cromwell, Connecticut - Circa 1870's. Made of Cast Iron. 6 3/4" Tall.



171: Three Cast Iron Building Banks

USD 175 - 225

Roof Bank - Grey Iron Casting Company - 5 1/4" Tall. Double Door (2) - A. C. Williams Company - 5 7/16" Tall. Made of Cast Iron.

RSL Online - September Treasures



172: Three Figural Cast Iron Still Banks

USD 175 - 225

Buster Brown & Tige - A. C. Williams Company. Sharecropper - A. C. Williams Company. Mrs O'Leary - SBCCA 2003. Made of Cast Iron. 4 1/2" Tall to 5 1/4" Tall.



173: Pirate Chest Bank and Cast Iron Novelty Toy

USD 75 - 100

Pirate Chest - American - Made of Tin. Novelty Toy - American - Made of Cast Iron - marked, "PAT JAN 19 1888". 2 1/4" to 5" Wide.



174: Two Tin Banks

USD 75 - 125

English Punch & Judy - Tin - Works Well. American Tin Cottage. 3 1/4" to 4 1/4" Tall.



175: Three Modern Cast Iron Banks

USD 50 - 75

5" to 8" Long. Elephant is very hard to set in place, but works.



176: Fun Novelty Toys

USD 100 - 150

Chicken coop is 3 3/4" Tall x 3 1/4" Deep (Made in Germany). Halloween decorations are 2 1/4" Tall (Made in Japan). Thank You Notes box is 5 1/4" x 4 1/4".



177: Native Bobble Head Toy

USD 100 - 150

Made of Wood, Paper Mache and Faux Hair. 7 3/4" Tall.



178: 8 Dexterity Games / Puzzles

USD 125 - 175

Made in Germany / Japan. Largest 2 1/2" Diameter. 3 1/4" to 5" Tall.



179: Penny Pineapple - Cast Iron Mechanical Bank

USD 175 - 225

Made by Im Swiler & Saylor. York, Pa. - 1959. Commemorates Hawaii's Statehood. Works well.

RSL Online - September Treasures



180: Three Figural Cast Iron Still Banks

USD 125 - 175

Foxy Grandpa - Wing Mfg. Company. Mutt & Jeff - A. C. Williams. Middy - Ives Blakeslee Company. Made of Cast Iron. 5 1/4" to 5 1/2" Tall.



181: Spise the Mule Bench - Cast Iron Mechanical Bank

USD 100 - 150

Made by J. & E. Stevens Company. Cromwell, Connecticut Circa 1897. Made of Cast Iron. A young man has stopped to give his mule some disciplinary action, but the tables are turned on him when the mule suddenly swings around and kicks him over. Works well.



182: Book of Knowledge - Ogan Boy & Girl

USD 50 - 75

Made by Book of Knowledge.



183: Two Mechanical Banks

USD 75 - 125

Southern Comfort. Wood Chopper (Tin). Both work well.



184: Three Cast Iron Bear Banks

USD 100 - 150

Begging Bear (2) - A. C. Williams Company. Mean Bear - Hubley Mfg. Company. Made of Cast Iron. 5 1/4" to 6 1/4" Tall.



185: Four Elephants - Cast Iron Still Banks

USD 225 - 300

American - Circa 1910's/1920's. Made of Cast Iron. 4 1/4" to 5" Long.



186: Three Cast Iron Animal Themed Banks

USD 125 - 175

Small Stag - A. C. Williams Company. Large Donkey - A. C. Williams Company. Duck on Tub (Save for a Rainy Day) - Hubley Mfg. Company. Made of Cast Iron. 5 1/4" to 7" Tall.



187: Four Animal Themed Still Banks

USD 100 - 150

American - Circa 1910's/1920's. Made of Cast Iron. 2" to 4 1/2" Long.

RSL Online - September Treasures



188: Three Cast Iron Still Banks

USD 75 - 125

Seated Cat (with Fine Fur) - A. C. Williams Company. Pass Around the Hat (Lincoln High Hat) - American. Mutt & Jeff - A. C. Williams Company. Made of Cast Iron. 2 1/2" to 5 1/4" Tall.



189: Three Cast Iron Still Banks

USD 125 - 175

Includes: Bird Space Heater - Chamberlain & Hill - 6 3/4" Tall. Gold Dollar Eagle Bank - Arcade - 3 3/4" Tall. Security Safe Deposit - Kyser & Rex - 4 3/4" Tall.



190: Captain Kidd - Cast Iron Still Bank

USD 125 - 175

Made by Ives, Blakeslee Co. Bridgeport, Connecticut - 1895. 5 3/4" Tall. Made of Cast Iron.



191: Baby in Cradle - Cast Iron Still Bank

USD 100 - 150

American - 1890's. Made of Cast Iron. 3 1/4" Tall.



192: Four Cast Iron Building Banks

USD 100 - 200

Rose Window - England - 2 3/8" Tall. Small Cupola - J. & E. Stevens Company - 3 1/4" Tall. State Bank (Straight Letters) - Grey Iron Casting Company - 4 1/4" Tall. One Story House (Screw Underneath) - J. & E. Stevens Company - 3 1/4" Tall. Made of Cast Iron.



193: Three Cast Iron Building Banks

USD 125 - 175

City Bank with Directors Room - John Harper Ltd. - 4 1/8" Tall. Woolworth Building (Small) - Kenton Hardware Company - 5 3/4" Tall. Crown (Small) - J. & E. Stevens Company - 3 1/8" Tall. Made of Cast Iron.



194: Two Cast Iron Building Banks

USD 100 - 200

Home Savings with Lioness Finial - J. & E. Stevens Company - 5 3/4" Tall. Roof Bank - J. & E. Stevens Company - 5 1/2" Tall. Made of Cast Iron.



195: Two Cast Iron Building Banks

USD 100 - 200

Home Savings with Lioness Finial - J. & E. Stevens Company - 5 3/4" Tall. Roof Bank - Grey Iron Casting Company - 5 1/4" Tall. Made of Cast Iron.

RSL Online - September Treasures



196: Home - Cast Iron Still Bank

USD 75 - 125

Made by H. L. Judd Company. Wallingford, Connecticut - Circa 1890. 4 1/4" Tall. Made of Cast Iron.



197: Snap It - Cast Iron Mechanical Bank

USD 250 - 350

Made by H. L. Judd Company. Wallingford, Ct. - 1880. Made of Cast Iron. Works well.



198: Dog on Turntable - Cast Iron Mechanical Bank

USD 250 - 350

Made by H. L. Judd Mfg. of Wallingford, CT - 1895. Made of Cast Iron. Turn the crank and the dog enters the building and deposits the coin. Works well.



199: Novelty - Cast Iron Mechanical Bank

USD 300 - 400

Made by J. & E. Stevens Company. Cromwell, Connecticut - Circa 1870's. Made of Cast Iron. Open the door, place your coin on the man's tray, close the door and your coin will be deposited behind the lattice work. Works well.



200: Novelty - Cast Iron Mechanical Bank

USD 300 - 400

Made by J. & E. Stevens Company. Cromwell, Connecticut - Circa 1870's. Made of Cast Iron. Open the door, place your coin on the man's tray, close the door and your coin will be deposited behind the lattice work. Works well.



201: The Kick Inn - Wooden Mechanical Bank

USD 75 - 125

Made by Presto Novelty Mfg. Company. St. Louis, Missouri - Circa 1920's. The mule kicks his back legs out to cause the tin ledge to throw the penny into the Inn. Made of Wood.



202: Humpty Dumpty - Cast Iron Mechanical Bank

USD 600 - 800

Made by Shepard Hardware Company. Buffalo, New York - Circa 1885. Made of Cast Iron. Place a coin in the clown's hand and press the lever on his back. Then he will gladly swallow your coin. Works well.



203: Clown on Globe - Cast Iron Mechanical Bank

USD 500 - 700

Made by J. & E. Stevens Company. Cromwell, Connecticut - Circa 1880's. Made of Cast Iron. First put the lever up, then twist the globe. Place your coin in the slot and press the lever down, the coin will deposit and the globe and clown will spin round and round. As a second action you can press the lever on the back of the globe, which will cause the clown to do a handstand. Works well.

RSL Online - September Treasures



204: World's Fair - Cast Iron Mechanical Bank

USD 500 - 700

Made by J. & E. Stevens Company. Cromwell, Connecticut - Circa 1890's. Made of Cast Iron. Works well.



205: Spise a Mule, Jockey Over - Cast Iron Mechanical Bank

USD 400 - 600

Made by J. & E. Stevens Company. Cromwell, Connecticut - Circa 1890. Made of Cast Iron. Coins placed in the jockey's mouth are deposited through the slot in the log when the bank is operated. Works well.



206: William Tell - Cast Iron Mechanical Bank

USD 300 - 500

Made by J. & E. Stevens Company. Cromwell, Connecticut - Circa 1890's. Made of Cast Iron. Works well.



207: Teddy and the Bear - Cast Iron Mechanical Bank

USD 800 - 1,200

Made by the J. & E. Stevens Company. Cromwell, Ct. - Circa 1910. Made of Cast Iron. The imagery portrayed in this remarkable bank draws from an actual incident from Teddy's adventurous life. While hunting for bear in the south, Roosevelt exhibited great compassion for the well-being of an injured and sick bear, giving him a reputation as animal rights advocate. Works well.



208: Trick Dog Six Part Base - Cast Iron Mechanical Bank

USD 300 - 500

Made by the Hubley Mfg. Company. Lancaster, Pennsylvania - Circa 1900. Made of Cast Iron. Works well.



209: Trick Pony - Cast Iron Mechanical Bank

USD 200 - 400

Shepard Hardware Company. Buffalo, NY - 1890's. Made of Cast Iron. The Trick Pony Bank is one of the most visually appealing toy banks ever created. It was a popular mainstay from Shepard's "Excelsior Series". Works well.



210: Lion and Monkeys - Cast Iron Mechanical Bank

USD 600 - 800

Double Peanut Tree Knot Variant. Made by the Kyser and Rex Company. Philadelphia, Pennsylvania - Circa 1880's. Made of Cast Iron. A mother and her infant evade the powerful jaws of the lion by scrambling up the bark of a tree. They placate his hunger by feeding him coins that drop from the adult monkey's right hand into his mouth. Works well.

RSL Online - September Treasures



211: Paddy and the Pig - Cast Iron Mechanical Bank

USD 800 - 1,000

Made by J. & E. Stevens Company. Cromwell, Connecticut - Circa 1880's. Made of Cast Iron. Place a coin on the pig's nose, press the lever: the pig will kick the coin into Paddy's mouth as he sticks out his tongue. 8 1/4" Tall. Works well.



212: Three Jolly Man - Cast Iron Mechanical Banks

USD 300 - 500

Classic coin swallowing action. Made of Cast Iron. Work well.



213: Three Jolly Man - Aluminum Mechanical Banks

USD 300 - 500

Two made by Starkies. The Greedy Man made by Urlwin of New Zealand. Classic coin swallowing action. Made of Aluminum. Work well.



214: Three Greedy Man - Aluminum Mechanical Banks

USD 300 - 500

Made by Urlwin of New Zealand. Classic coin swallowing action. Made of Aluminum. Work well.



215: Three Greedy Man - Aluminum Mechanical Banks

USD 200 - 400

Made by Urlwin of New Zealand. Classic coin swallowing action. Made of Aluminum. Work well.



216: Three Jolly Man - Aluminum & Cast Iron Banks

USD 300 - 500

Two Greedy Man banks made by Urlwin of New Zealand. The cast iron version is made by Shepard Hardware. Two made of Aluminum, one cast iron. Work well.



217: Three Greedy Man - Aluminum Mechanical Banks

USD 300 - 500

Made by Urlwin of New Zealand. Classic coin swallowing action. Made of Aluminum. Work well.



218: Three Jolly Man - Aluminum & Cast Iron Banks

USD 300 - 500

Cast Iron Version made in England. One made by Starkies. The one with Red Hat most likely made in England, has reverse action, eyes show when depositing coin. Work well.

RSL Online - September Treasures



219: Three Jolly Man - Aluminum & Cast Iron Banks

USD 200 - 400

Two Greedy Man banks made by Urlwin of New Zealand. The cast iron version is made by J. & E. Stevens Company. Two made of aluminum, one cast iron. Work well.



220: Three Mechanical Banks

USD 125 - 175

One Greedy Man made by Urlwin of New Zealand. A reproduction Dinah made most likely in China. Starkies bank has Wiggily ears. Work well.



221: Two Reynolds Banks

USD 125 - 175

Bill Clinton made in 1993. Uncle Louie: Made in 1997. Edition of 35. 7 3/4" Tall.



222: Shoe House - Reynolds Mechanical Bank

USD 150 - 200

Made in 1994. Edition of 50. 8 1/4" Tall. Cast Aluminum.



223: Two Reynolds Mechanical Banks

USD 300 - 400

Duel at the Dome: Made in 1992. Edition of 50. 9 1/2" Tall. Cast Aluminum. Lillehammer: Made in 1994. Edition of 50. 10" Long. Cast Aluminum.



224: Two Reynolds Mechanical Banks

USD 300 - 400

Hyakutake: Made in 1996. Edition of 50. 8" Long. Cast Aluminum. Williamsburg Bank: Made in 1991. Edition of 35. 10 1/2" Long. Cast Aluminum.



225: Buffalos Revenge - Reynolds Mechanical Bank

USD 250 - 350

Made in 1990. Edition of 35. 7 1/4" Tall. Cast Aluminum.



226: De Bug - Reynolds Mechanical Bank

USD 175 - 225

Made in 1999. Edition of 50. 7 1/2" Long. Cast Aluminum.

RSL Online - September Treasures



227: Hollywood - Reynolds Mechanical Bank

USD 250 - 350

Made in 1989. Edition of 35. 11" Long. Cast Aluminum.



228: Oregon Trail - Reynolds Mechanical Bank

USD 250 - 350

Made in 1993. Edition of 35. 12 1/2" Long. Cast Aluminum.



229: Friar's Favorite - Reynolds Mechanical Bank

USD 250 - 350

Made in 1997. Edition of 50. 7 1/8" Tall. Cast Aluminum.



230: The J. & E. Stevens Foundry - Reynolds Mechanical Bank

USD 250 - 350

Made in 1995. Edition of 50. 8 3/4" Long. Cast Aluminum.



231: Get out of Kuwait - Reynolds Cap Gun

USD 50 - 75

Cast Aluminum.



232: Your Taxes Zig Zag Willy - Sandman Mechanical Bank

USD 100 - 150

Made by Sandman Designs Inc. 1998.



233: A Nation Divided - Sandman Mechanical Bank

USD 100 - 150

Made by Sandman Designs Inc. 1999.



234: Campaign 88 - Reynolds Political Mechanical Bank

USD 400 - 600

Edition of 50. 9 1/4" Tall. Cast Aluminum. Charlie Reynolds produced several Presidential Election themed banks. This is his first for the 1988 election between Bush Sr., Dukakis and Jackson.

RSL Online - September Treasures



235: 92 Vote - Reynolds Political Mechanical Bank

USD 400 - 600

Made in 1992. Edition of 50. 10 1/4" Tall. Cast Aluminum. To commemorate the 1992 Presidential race between Clinton, Bush and Perot.



236: 96 Political Wish - Reynolds Political Mechanical Bank

USD 300 - 500

Made in 1996. Edition of 50. 9 3/4" Long. Cast Aluminum. To commemorate the 1996 Presidential race between Clinton, Dole and Perot.



237: Two Cast Iron Still Banks

USD 100 - 150

Two Faced Boy Small - A. C. Williams. Sharecropper - A. C. Williams. Made of Cast Iron.



238: Two Still Banks

USD 150 - 200

Large Camel - A. C. Williams - 7 1/4" Tall. Begging Bear - Pot Metal.



239: Frog - Cast Iron Garden Ornament

USD 75 - 125

Made in the USA circa 1930's. Made of Cast Iron.



240: Two Cast Iron Building Banks

USD 100 - 200

Home Savings Bank with Lioness Finial - J. & E. Stevens Company. Roof Bank - J. & E. Stevens Company - 5 1/2" Tall. Made of Cast Iron.



241: Villa - Cast Iron Still Bank

USD 100 - 200

Made by Kyser & Rex Company. Philadelphia, Pennsylvania - 1890's - 5 5/8" Tall.



242: Two Cast Iron Safe Banks

USD 75 - 125

Arabian Safe - Kyser & Rex Company - 4 1/2" Tall. Moon & Star Safe - American - 5" Tall. Cast Iron

RSL Online - September Treasures



243: Two Cast Iron Safe Banks

USD 75 - 125

Burglar Proof Safe - J. & E. Stevens Company - 5 7/8" Tall. Horse Head Safe - Kenton Hardware Company - 4 7/8" Tall. Made of Cast Iron.



244: Two Cast Iron Safe Banks

USD 75 - 125

Royal Safe Deposit - Henry Hart Company - 5 3/4" Tall. Burglar Proof Safe - J. & E. Stevens Company - 5 7/8" Tall.



245: Two Cast Iron Mechanical Banks

USD 200 - 400

Includes: Novelty & Hall's Excelsior Mechanical Banks. Made of Cast Iron. Work well.



246: Two Cast Iron Mechanical Banks

USD 200 - 400

Includes: Tammany & Owl Turns Head. Made of Cast Iron. Work well.



247: Two Humpty Dumpty Cast Iron Mechanical Banks

USD 200 - 400

Includes: Shepard Humpty Dumpty & Ohio Foundry Humpty Dumpty. Made of Cast Iron. Work well.



248: Little Joe - Cast Iron Mechanical Bank

USD 150 - 250

Made by John Harper Ltd. Willenhall, England - 1931. A classic coin-swallowing bank.



249: Jolly Man with Straw Hat - RARE - Cast Iron Mechanical Bank

USD 400 - 600

Made by J. & E. Stevens Company. Cromwell, Connecticut - Circa 1890's. Made of Cast Iron. A classic coin swallowing bank. Works well.



250: Jolly Man with High Hat - Cast Iron Mechanical Bank

USD 300 - 500

Made by John Harper Ltd. Willenhall, England - 1910's. A classic coin-swallowing bank.

RSL Online - September Treasures



251: Two Mechanical Bank Parts

USD 75 - 125

Includes the base for a William Tell and a Creedmoor. Cast Iron.



252: William Tell - Cast Iron Mechanical Bank

USD 300 - 500

Made by J. & E. Stevens Company. Cromwell, Connecticut - Circa 1890's. Made of Cast Iron. Works well.



253: Two Cast Iron Mechanical Banks

USD 200 - 400

Includes: William Tell Bank & Creedmoor Bank. Made of Cast Iron. Work well.



254: Two Cast Iron Mechanical Banks

USD 200 - 400

Includes: Tabby Bank & Toad on Stump. Made of Cast Iron. Work well.



255: Santa at Chimney - Cast Iron Mechanical Bank

USD 400 - 600

Made by Shepard Hardware Company. Buffalo, New York 1889. Made of Cast Iron. Place a coin in Santa's hand. Depress the lever and he deposits it into the chimney. Works well.



256: Eagle & Eaglets - Cast Iron Mechanical Bank

USD 300 - 500

Made by J. & E. Stevens Company. Cromwell, Connecticut - 1880's.



257: Chief Big Moon - Cast Iron Mechanical Bank

USD 400 - 600

Made by the J. & E. Stevens Company. Cromwell, Connecticut - 1899. Charles Bailey's inspiration for "Chief Big Moon" may have come from the frog pond adjacent to the Stevens foundry building.



258: Two Frogs - Cast Iron Mechanical Bank

USD 300 - 500

Made by J. & E. Stevens Company. Cromwell, Connecticut - 1880's. Made of Cast Iron. Works well.

RSL Online - September Treasures



259: World's Fair - Cast Iron Mechanical Bank

USD 300 - 500

Made by J. & E. Stevens Company. Cromwell, Connecticut - Circa 1890's. Made of Cast Iron. Works well.



260: Wooden Book - Still Bank

USD 100 - 150

Made in America. Marked, "Patented Jul. 15, 1873.". Made of Wood.



261: Teddy and the Bear - Cast Iron Mechanical Bank

USD 500 - 700

Made by the J. & E. Stevens Company. Cromwell, Ct. - Circa 1910. Made of Cast Iron. The imagery portrayed in this remarkable bank draws from an actual incident from Teddy's adventurous life. While hunting for bear in the south, Roosevelt exhibited great compassion for the well-being of an injured and sick bear, giving him a reputation as animal rights advocate. Works well.



262: Speaking Dog - Cast Iron Mechanical Bank

USD 400 - 600

Made by the J. & E. Stevens Company. Cromwell, Ct. - Circa 1890's. Made of Cast Iron. Works well.



263: Clown on Globe - Cast Iron Mechanical Bank

USD 300 - 500

Made by J. & E. Stevens Company. Cromwell, Connecticut - Circa 1880's. Made of Cast Iron. First put the lever up, then twist the globe. Place your coin in the slot and press the lever down, the coin will deposit and the globe and clown will spin round and round. As a second action you can press the lever on the back of the globe, which will cause the clown to do a handstand. Works well.



264: Punch & Judy - Cast Iron Mechanical Bank

USD 400 - 600

Shepard Hardware Company. Buffalo, New York - 1890.



265: Cat & Mouse - Cast Iron Mechanical Bank

USD 300 - 500

Made by J. & E. Stevens Company. Cromwell, Connecticut - Ca. 1891. Made of Cast Iron. The design for the Cat & Mouse Bank is based on a Victorian mantle clock form. For certainly, the bank's imagery draws from the English nursery rhyme "Hickory, Dickory Dock". In this telling of the story, the cat and mouse play together. Works well.

RSL Online - September Treasures



266: Mule Entering Barn - Cast Iron Mechanical Bank

USD 300 - 500

Made by J. & E. Stevens Company. Cromwell, Connecticut - Early 1880's. Made of Cast Iron. Coins placed between the mule's hind legs are deposited when the operating button is pushed. As the mule flips over and into the barn, a small dog runs out from beneath the floorboards. Works well.



267: Speaking Dog - Cast Iron Mechanical Bank

USD 400 - 600

Made by Shepard Hardware Company. Buffalo, New York - 1890's.



268: Clown on Globe - Cast Iron Mechanical Bank

USD 500 - 700

Made by J. & E. Stevens Company. Cromwell, Connecticut - Circa 1880's. Made of Cast Iron. First put the lever up, then twist the globe. Place your coin in the slot and press the lever down, the coin will deposit and the globe and clown will spin round and round. As a second action you can press the lever on the back of the globe, which will cause the clown to do a handstand. Works well.



269: Uncle Sam - Cast Iron Mechanical Bank

USD 600 - 800

By the Shepard Hardware Company. Buffalo, New York - Circa Late 1880's. As the personification of the strength and humanity of the United States, this toy bank image of Uncle Sam is perhaps the most iconic in the bank collecting hobby. Over the years, the Uncle Sam Bank has been used in advertising campaigns and television ads.



270: Elephant with Howdah - Cast Iron Mechanical Bank

USD 200 - 300

Hublely Mfg. Co. Lancaster, PA - 1920's.



271: Spise the Mule, Jockey Over - Cast Iron Mechanical Bank

USD 150 - 250

Made by J. & E. Stevens Company. Cromwell, Connecticut - Circa 1890. Coins placed in the jockey's mouth are deposited through the slot in the log when the bank is operated.



272: Leap Frog - Cast Iron Mechanical Bank

USD 300 - 500

Made by Shepard Hardware Company. Buffalo, New York - 1890's. Place a penny in the slot at the top of the tree stump. Pressing the activation button found on the back of the bank causes the boy to make his dramatic hop over his friends back.

RSL Online - September Treasures



273: Three Cast Iron Banks

USD 200 - 300

Ringing Globe - Enterprise Mfg. Company - 5 3/4" Tall. Space Heater with Beehive - Sydenham & McOustra - 6 1/4" Tall. Globe on Arc - Grey Iron Casting Company - 5 1/4" Tall.



274: Three Cast Iron Items

USD 100 - 150

Roof Bank - J. & E. Stevens Company - 1/2" Tall. Bird Bottle Opener - Hubley Mfg. Company - 5 1/2" Tall. Steamboat - A. C. Williams - 7 5/8" Long.



275: Shoot A Bar - Aluminum Mechanical Bank

USD 100 - 150

Made by Toy Time Mfg. Detroit, Michigan - Circa 1950's.



276: Jonah and the Whale - Cast Iron Mechanical Bank

USD 800 - 1,000

Made by Shepard Hardware Company. Buffalo, New York - Circa 1890's. Here we find the instructional biblical narrative as imagined by the bank designers at Shepard Hardware. Jonah is tossed over the boat rail by his crew mates for angering God, who has made the waters rough and unnavigable.



277: Trick Pony - Cast Iron Mechanical Bank

USD 200 - 400

Shepard Hardware Company. Buffalo, NY - 1890's. Made of Cast Iron. The Trick Pony Bank is one of the most visually appealing toy banks ever created. It was a popular mainstay from Shepard's "Excelsior Series". Works well.



278: Lion and Monkeys - Cast Iron Mechanical Bank

USD 200 - 400

Single Peanut Tree Knot Variant. Made by the Kyser and Rex Company. Philadelphia, Pennsylvania - Circa 1880's. Made of Cast Iron. A mother and her infant evade the powerful jaws of the lion by scrambling up the bark of a tree. They placate his hunger by feeding him coins that drop from the adult monkey's right hand into his mouth. Works well.



279: Chief Big Moon - Cast Iron Mechanical Bank

USD 600 - 800

Made by the J. & E. Stevens Company. Cromwell, Connecticut - 1899. Charles Bailey's inspiration for "Chief Big Moon" may have come from the frog pond adjacent to the Stevens foundry building.

RSL Online - September Treasures



280: Eagle & Eaglets - Cast Iron Mechanical Bank

USD 400 - 600

Made by J. & E. Stevens Company. Cromwell, Connecticut - 1880's.



281: Spise a Mule, Bench - Cast Iron Mechanical Bank

USD 150 - 250

Made by J. & E. Stevens Company. Cromwell, Connecticut Circa 1897. A young man has stopped to give his mule some disciplinary action, but the tables are turned on him when the mule suddenly swings around and kicks him over.



282: Darktown Battery - Cast Iron Mechanical Bank

USD 700 - 900

Made by J. & E. Stevens Company. Cromwell, Connecticut - Late 1880's. The sporting theme, vivid color and dynamic action make the Darktown Battery one of the great favorites of collectors. Pennies placed in the pitcher's right hand are tossed to the catcher. Simultaneously, the batter attempts to swing but strikes out. This is a superior example of the bank.



283: Speaking Dog - Cast Iron Mechanical Bank

USD 500 - 700

Made by Shepard Hardware Company. Buffalo, New York - 1890's. Made of Cast Iron. Place a coin on the girls paddle, press the lever and she will instruct the dog to "speak" while the coin disappears into the bench. 7 1/4" Wide. Works well.



284: Stump Speaker - Cast Iron Mechanical Bank

USD 500 - 700

Shepard Hardware. Buffalo, NY - 1890.



285: Boys Stealing Watermelon - Salafian Brothers Cast Iron Mechanical Bank

USD 600 - 800

Made by the Salafian Brothers. Philadelphia, Pennsylvania - Circa 1930's. Made of Cast Iron. Works well.



286: Zoo - Cast Iron Mechanical Bank

USD 600 - 800

By Kyser & Rex Company. Philadelphia, Pa. - 1880's.



287: Girl in Victorian Chair - Cast Iron Mechanical Bank

USD 1,200 - 1,800

W. S. Reed Toy Company. Leominster, Ma. - Circa 1880.

RSL Online - September Treasures



288: Bad Accident - Cast Iron Mechanical Bank

USD 800 - 1,200

Made by J. & E. Stevens Company. Cromwell, Connecticut - Circa 1888. A farmer foolishly eats a slice of melon while driving his cart to the market. When a small boy suddenly emerges from behind the foliage, it's too late to control the actions of the mule, who has reared upwards, toppling the cart and causing a bad accident.



289: Horse Race - Cast Iron Mechanical Bank

USD 1,200 - 1,800

Made by the J. & E. Stevens Company. Cromwell, Connecticut - Circa 1870's. To operate, pull the mechanism taut and set the horse's feet by the painted star found on the base. Dropping coins into the chute causes the spring to explode, sending the horses around the track and through the arches.



290: Magician - Cast Iron Mechanical Bank

USD 900 - 1,200

Made by the J. & E. Stevens Company. Cromwell, Connecticut - Circa 1890's. This is an iconic mechanical bank from the late Victorian Era



291: Initiating Bank, Second Degree - Cast Iron Mechanical Bank

USD 1,750 - 2,250

a.k.a. Goat, Frog and Old Man Bank. Made by Mechanical Novelty Works. New Britain, Connecticut - Early 1880's. Mechanical Novelty Works produced two different banks based on George Eddy's patent of Sept. 28, 1880. In this version, we find an old man seated atop a billy goat. His long goatee rivals that of the animal he rides. Pulling the goat and man backwards sets them in place to operate the bank. Pushing the button causes coins on the man's tray to deposit into the frog's mouth.



292: Reclining Chinaman - Cast Iron Mechanical Bank

USD 1,200 - 1,800

Made by J. & E. Stevens Company. Cromwell, Connecticut - Mid 1880's. A recumbent chinaman dressed in the garb of a coolie invites us to play a hand of poker with him. Pennies placed in his jacket pocket are deposited when the lever is pressed. At the very same time, his hands change position. He grins at you, knowing that he's cheated you as he pulls four aces from up his sleeve. This fear of the exotic unknown foreigner was known as "Yellow Peril".



293: Lion Hunter - Cast Iron Mechanical Bank

USD 1,500 - 2,000

Made by the J. & E. Stevens Company. Cromwell, Connecticut - 1911. The Lion Hunter bank references the chronological period immediately following Teddy Roosevelt's Presidency. When he left office in 1909, he went on an extended safari in Africa and then toured through Europe.



294: Panorama - Cast Iron Mechanical Bank

USD 3,000 - 4,000

Made by the J. & E. Stevens Company. Cromwell, Connecticut - Circa 1870. Push a coin into the roof slot and the pictures in the panorama window turn in sequence.

RSL Online - September Treasures



295: Two Pot Metal Still Banks

USD 25 - 50

Includes: Commercial Bank of Ethiopia & Mid-Atlantic Penny Bank Club.



296: Six Still Banks

USD 75 - 125

Includes: Ideola Jukebox, Treasure Island Book Bank, Harper Bank & Trust Company Registering Bank (with Box), Credit Union Dime Register and to Community Youth Register.



297: Four Pot Metal Still Banks

USD 75 - 125

Includes: Guardure Savings Treasure Chest, First Federal Savings & Loan, Davy Crockett and 1972 S Penny Bank.



298: Three Souvenir Banks

USD 20 - 40

Includes: Washington Mansion, Home and Forbes National Bank.



299: Three Still Banks

USD 30 - 50

Includes: Spelter Donkey, Modern Capital Bank and Elephant Swings Trunk.



300: Two Ceramic Building Still Banks

USD 15 - 30

Includes: A Home Bank and Villa Bank.



301: Seven Still Banks

USD 40 - 60

Includes: Springfield Five Cents Savings Bank Lock Box, The Peoples State Bank of Caro Michigan, Regular Savings Accumulates Great Wealth Register, Magic Baking Powder - Pure Wholesome Tin Cylinder, Somewhere My Love Music Box, Yellow Tin House Bank and Japanese Silvered lead Cocky Baby Bank.



302: Three Cast Iron Still Banks

USD 75 - 125

All three made by A. C. Williams Company. Three Story Mosque, Two Story Mosque and Buster Brown & Tige.

RSL Online - September Treasures



303: Two Still Banks

USD 40 - 60

Gunther's Candies - Home Savings Bank of Chicago. Brass ER Helmet Bank.



304: Eskimo - Folk Art Mechanical Bank

USD 150 - 200

Classic coin tipping action bank. You almost feel the frost while gazing into the igloo. Made of wood.



305: Two Book of Knowledge Banks

USD 150 - 200

Pennsylvania - 1960's/70's. An Organ Boy & Girl and a Humpty Dumpty.



306: Two Book of Knowledge Banks

USD 150 - 200

Pennsylvania - 1960's/70's. Two Eagle & Eaglets.



307: Two Book of Knowledge Banks

USD 200 - 250

Pennsylvania - 1960's/70's. A spise Mule-Bench version and a Creedmoor.



308: Two Book of Knowledge Banks

USD 200 - 250

Pennsylvania - 1960's/70's. A Punch & Judy and a Cat & Mouse.



309: Two Book of Knowledge Banks

USD 200 - 250

Pennsylvania - 1960's/70's. A Paddy and the Pig and a Dentist.



310: Magic Safe - Tin Bank

USD 80 - 120

English - 1920's.

RSL Online - September Treasures



311: Pascall Vending Bank

USD 125 - 175

English - 1920's - 6" Tall.



312: Monkey Tips Tray - Tin Mechanical Bank

USD 100 - 150

Saalheimer & Strauss. German - 1920's - 6" Tall.



313: Hessian Drummer - Mechanical Bank

USD 175 - 225

Schuco Toy Company. German - 1935 - 5 3/4" Tall.



314: Owl Turns Head - Cast Iron Mechanical Bank.

USD 300 - 400

J. & E. Stevens Company. Cromwell, Connecticut - 1880's.



315: Bull Dog, Blue Blanket - Cast Iron Mechanical Bank

USD 400 - 600

J. & E. Stevens Company. Cromwell, Connecticut - 1880's.



316: Speaking Dog - Cast Iron Mechanical Bank

USD 500 - 700

Shepard Hardware Company. Buffalo, New York - 1885.



317: Popeye Register Bank

USD 30 - 50

King Features. American - 1930's.



318: Stump Speaker - Cast Iron Mechanical Bank

USD 700 - 900

Shepard Hardware Company. Buffalo, New York - 1886.

RSL Online - September Treasures



319: Chief Big Moon - Cast Iron Mechanical Bank

USD 800 - 1,000

J. & E. Stevens Company. Cromwell, Connecticut - 1890's.



320: New Creedmoor - Cast Iron Mechanical Bank

USD 400 - 500

J. & E. Stevens Company. Cromwell, Connecticut - 1890's.



321: Boy on Trapeze - Cast Iron Mechanical Bank

USD 800 - 1,000

J. Barton Smith. Philadelphia, Pennsylvania - 1890's.



322: Two Horse Stake Wagon - Cast Iron Toy

USD 80 - 120

Kenton Hardware Company. Kenton, Ohio - 9 3/4" Long.



323: Early Cabriolet - Cast Iron Toy

USD 125 - 175

Probably Jones & Bixler. Ohio - 1915 - 6" Long.



324: Sand & Gravel Cart - Cast Iron Toy

USD 125 - 175

Kenton Hardware Company. Kenton, Ohio - 1940's - 15" Long.



325: Stake Wagon - Cast Iron Toy

USD 125 - 175

Kenton Hardware Company. Kenton, Ohio - 1940's - 15" Long.



326: Two Horse Pumper, Clockwork - Cast Iron Toy

USD 800 - 1,000

Ives, Blakeslee Company. Bridgeport, Connecticut - 1890's - 20" Long. This is the very rare clockwork version of the toy. The mechanism works well.

RSL Online - September Treasures



327: International Stake Truck - Cast Iron Toy

USD 225 - 275

Arcade Mfg. Company. Freeport, Illinois - 1932 - 10" Long.



328: Mack Front "Whites" Dump Truck - Cast Iron Toy

USD 350 - 450

Arcade Mfg. Company. Freeport, Illinois - 1930 - 11" Long. This is a very scarce early Arcade Dump Truck.



329: Huber Road Roller - Cast Iron Toy

USD 125 - 175

Hubley Mfg. Company. Lancaster, Pennsylvania - 1930 - 7 1/2" Long.



330: Ice Truck - Cast Iron Toy

USD 100 - 150

Arcade Mfg. Company. Freeport, Illinois - 1932 - 7" Long.



331: Take-Apart Woodie Station Wagon

USD 225 - 275

Kilgore Mfg. Company. Westerville, Ohio - 1932 - 7 1/4" Long.



332: Model A Sedan - Cast Iron Toy

USD 150 - 200

Hubley Mfg. Company. Lancaster, Pennsylvania. 1922 - 6" Long.



333: Yellow Cab - Cast Iron Toy

USD 175 - 225

"Kubik Toys" American - 1970's - 5" Long. This appears to be a 1970's version of the small Freidag Yellow Cab. It is marked inside in raised letters "Kubik Toys".



334: Tow Truck - Cast Iron Toy

USD 100 - 150

Arcade Mfg. Company. Freeport, Illinois - 1935 - 6 1/2" Long.

RSL Online - September Treasures



335: Race Car with Moving Pistons - Cast Iron Toy

USD 250 - 325

Hubley Mfg. Company. Lancaster, Pennsylvania - 1925 - 8 1/2" Long. The toy works well.



336: Two Seat Open Touring Car - Cast Iron Toy

USD 100 - 150

Pennsylvania - 1915 - 6 3/4" Long.



337: "Speed" Delivery Stake Truck - Cast Iron Toy

USD 200 - 275

Kenton Hardware Company. Kenton, Ohio - 1928 - 10" Long.



338: Police Motorcycle - Cast Iron Toy

USD 125 - 175

American - 1930's - 4 3/4" Long.



339: San Diego World's Fair Premium Giveaway

USD 125 - 175

Made by Firestone Tire Company. Ohio - 1935 - 5" Long.



340: Champion Panel Truck - Cast Iron Toy

USD 175 - 225

Champion Toy Company. Ohio - 1930 - 7 3/4" Long.



341: Gasoline Truck - Cast Iron Toy

USD 125 - 175

Hubley Mfg. Company. Lancaster, Pennsylvania - 1930 - 5 1/2" Long.



342: Pumper - Cast Iron Toy

USD 225 - 275

Hubley Mfg. Company. Lancaster, Pennsylvania - 1930 - 8 1/4" Long.

RSL Online - September Treasures



343: Two Tone Stake Truck - Cast Iron Toy

USD 350 - 450

Arcade Mfg. Company. Freeport, Illinois - 1925 - 8 3/4" Long.



344: Two Cast Iron Buses

USD 75 - 100

American - 1935 - 3 1/2" Long.



345: McCormick Deering Hay Wagon

USD 100 - 150

Arcade Mfg. Company. Freeport, Illinois - 1930 - 12" Long.



346: Three Horse Hook & Ladder - Cast Iron Toy

USD 500 - 700

Ideal Mfg. Company. Pennsylvania - 1905 - 31" Long.



347: Royal Circus Bandwagon, Smaller Version - Cast Iron Toy

USD 900 - 1,200

Hubley Mfg. Company. Lancaster, Pennsylvania - 1906 - 23" Long.



348: Four Airplanes

USD 75 - 125

American - 1920/30's. 2 1/2" - 3 3/4" Long.



349: Three Army Planes

USD 175 - 225

Probably North & Judd. American - 1920's - 3 1/2" Long. One rare plane with Army Insignia on the side.



350: Four Commercial Airplanes

USD 175 - 225

American - 1930's. 3 3/4" to 4 1/4" Long. Two marked United-Boeing.

RSL Online - September Treasures



351: Two "Mystery" / N4 Airplanes

USD 200 - 275

Kilgore Mfg. Company. Westerville, Ohio - 1930. 4 1/4" to 6 1/4" Long.



352: Lindy / Ford Tri Motor Airplanes

USD 150 - 200

American - 1920's/30's. 4" Long.



353: Zeppelin & "Lucky Boy" Glider

USD 175 - 225

American - 1930's. 4 1/2" to 5" Long.



354: Lindy Airplane - Cast Iron Toy

USD 200 - 275

American - 1930's - 7" Long.



355: "Lucky Boy" Trimotor - Cast Iron Toy

USD 225 - 300

American - 1930's - 6 3/4" Long.



356: Art Deco Aluminum Airplane Toy

USD 275 - 375

American - 1935 - 10" Long.



357: "Junkers" Bremen Airplane - Aluminum Toy

USD 300 - 400

Hubley Mfg. Company. Lancaster, Pennsylvania - 1930's. 10 1/4" Long. This is a scarce aluminum version of this already scarce toy.



358: "Lindy" Airplane - Cast Iron Toy

USD 300 - 400

American - 1930'. 11" Long.

RSL Online - September Treasures



359: "Air Express" Trimotor - Cast Iron Toy

USD 350 - 450

American - 1930's. 11" Long.



360: "Monocoupe" Airplane - Cast Iron Toy

USD 400 - 500

Arcade Mfg. Company. Freeport, Illinois - 1935. 9" Long.



361: "Air Mail" Airplane - Cast Iron Toy

USD 350 - 450

Kenton Hardware. Kenton, Ohio - 1920's. 9" Long.



362: "Lucky Boy" Airplane - Cast Iron Toy

USD 400 - 500

American - 1930's - 11" Long.



363: Inter-City Bus

USD 225 - 275

Murray Ohio Mfg. Company. Cleveland, Ohio - 1925 - 24" Long. Scarce to have the spare tire.



364: Large Friction Blue Bus

USD 275 - 375

"Leaves Wanamaker's Hourly". Turner Toy Company. Ohio - 1925 - 25" Long.



365: Air Force Blimp

USD 150 - 200

Louis Marx Company. New York - 1935 - 26" Long.



366: Stake Truck

USD 200 - 250

Turner Toy Company. Ohio - 1930 - 16 1/2" Long.

RSL Online - September Treasures



367: Stake Truck

USD 200 - 250

Turner Toy Company. Ohio - 1930 - 22" long.



368: Blue Four Door Sedan

USD 550 - 750

Cor Cor Toys. Washington, Indiana - 1937 - 19" Long. This is an elegant Cor Cor toy. The restoration is beautiful.



369: Steelcraft U. S. Mail Truck

USD 300 - 400

Murray Ohio Mfg. Company. Cleveland, Ohio - 1925 - 23" Long.



370: Engine with One Coach

USD 275 - 375

Cor Cor Toys. Washington, Indiana - 1930 - 42 1/2" Long.



371: Ladder & Hose Truck

USD 300 - 400

Keystone Mfg. Company. Boston, Massachusetts - 1925 - 27 1/2" Long.



372: Chemical Pump Engine

USD 400 - 500

Keystone Mfg. Company. Boston, Massachusetts - 1925 - 28" Long.



373: Steelcraft "City Fire Dep't"

USD 200 - 275

Murray Ohio Mfg. Company. Cleveland, Ohio - 1925 - 26" Long.



374: Homemade Ladder / Pumper Truck

USD 150 - 200

Made by Ken Vilet from Toy Parts. American - 1930's - 28" Long.

RSL Online - September Treasures



375: Dump Truck

USD 175 - 225

Turner Toys. Ohio - 1940's - 27" Long.



376: Sonny Toys Dump Truck

USD 175 - 225

Ohio - 1920's - 26" Long.



377: International Express

USD 100 - 150

Smith Miller Toys. American - 1950's/60's - 26" Long.



378: Lumar Auto Transport

USD 100 - 150

Marx Toy Company. New York, New York - 1960 - 31" Long.
