



CLASSIC TOYS AND BANKS



SATURDAY, NOVEMBER 7TH, 2020



RSL AUCTIONS

P.O. Box 635
Oldwick, NJ 08858
908-823-4049
Cell 917-991-7352
FAX 908-823-4519
rslauctions@yahoo.com
rslauctionco.com

SPECIALISTS

Ray Haradin
Pittsburgh, PA
Banks, Toys, Soldiers, Tiffany Lamps
412-343-8733
raytoys@aol.com

Steven Weiss
New York, NY
Banks, Toys, American Folk Art, American Art & Sculpture
212-729-0011
sweiss57@icloud.com

Leon Weiss
Oldwick, NJ
Banks, Toys, American Folk Art and Door Stops
908-823-4049
Cell 917-991-7352
leonweiss@me.com

Julian Abernethy
Sr. Auction and Computer Specialist

Bre Day
Senior Auction Specialist
412-841-0623
bremarieday@gmail.com

Angela Weiss
908-823-4049
a.weiss@rslauctionco.com
Office Manager, Website and Shipping Coordinator

 [Facebook.com/RSL-Auction-Company](https://www.facebook.com/RSL-Auction-Company)

 @rslauctions



CLASSIC TOYS AND BANKS

AUCTION #34

Saturday, November 7th, 2020 at 10 am Eastern Lots 1-384

WEBSITES:

rslauctionco.com LiveAuctioneers.com or BidSpirit.com

Auction will be held live without bidders in attendance.
Bids can be executed Absentee, Phone or Online via
LiveAuctioneers.com or BidSpirit.com

RSL Auctions
295 US Hwy 22 East
Suite 204 West
Whitehouse Station, NJ 08889
Look for "One Salem Square" Sign
Gallery Phone: 908-823-4049

PREVIEW:

Preview by appointment only.
Please call (908) 823-4049 to reserve a time to preview.

All visitors to the gallery must wear a mask and gloves
while in the gallery.

ABSENTEE AND PHONE BIDDING DEADLINE:

BIDS MUST BE RECEIVED BY FRIDAY, NOVEMBER 6th 2020

MAIL BIDS TO:

RSL Auctions, PO Box 635, Oldwick, NJ 08858

CALL BIDS TO:

Leon Weiss 908-823-4049 - Cell 917-991-7352

FAX BIDS TO:

RSL Auctions 908-823-4519

PAYMENT & SHIPPING

Leon Weiss 917-991-7352

DIRECTIONS TO OUR GALLERY

295 US Hwy 22 East
Suite 204 West
Whitehouse Station, NJ 08889
908-823-4049

From New England and Northern New Jersey

Cross the Tappan Zee Bridge and continue West on 287/87 about 14 miles to 287 South. Take 287 South to Exit 21B and merge onto 78 West (Clinton). Go to Exit 24 Whitehouse/Oldwick. Turn left at the light (towards Whitehouse). Go exactly 2 miles and turn onto U.S. Highway 22 West. Go 1.4 miles, staying in the left lane and passing one traffic light (Merck Drive). Go to the second turnaround after that light and head East on U.S. Highway 22 for 150 feet. Turn right into parking lot. Sign reads "One Salem Square".

From New York City

Lincoln or Holland Tunnel to the New Jersey Turnpike South. Travel only a few miles to Exit 14A-C. Get onto Route 78 West (Clinton) to Exit 24 (Whitehouse/Oldwick). Turn left at the light (towards Whitehouse). Go exactly 2 miles and turn onto U.S. Highway 22 West. Go 1.4 miles, staying in the left lane and passing one traffic light (Merck Drive). Go to the second turnaround after that light and head East on U.S. Highway 22 for 150 feet. Turn right into parking lot. Sign reads "One Salem Square".

Southern New Jersey and Points South

Take New Jersey Turnpike or Garden State Parkway to 287 North. It is about 20 - 22 miles to Route 78 West (Exit 21-B). Go to Exit 24 Whitehouse/Oldwick. Turn left at the light (towards Whitehouse). Go exactly 2 miles and turn onto U.S. Highway 22 West. Go 1.4 miles, staying in the left lane and passing one traffic light (Merck Drive). Go to the second turnaround after that light and head East on U.S. Highway 22 for 150 feet. Turn right into parking lot. Sign out front reads "One Salem Square".

Philadelphia Area

Take 95 North and cross into New Jersey. Exit for Route 31 (about 4 miles into New Jersey). Take 31 North about 20 miles to Route 78 East. (There are some traffic circles on 31 North – Always stay on 31 North until you hit Route 78 East). Take exit 18 and merge onto U.S. Highway 22 East and go 4.1 miles and turn into the parking lot. Sign out front reads "One Salem Square".

From the West

Take 78 East and cross into New Jersey. Take Exit 18 and merge onto U.S. Highway 22 and go 4.1 miles and turn into the parking lot. Sign out front reads "One Salem Square".

Please note that items sold in this catalog do not represent the personal views of RSL and it's employees.

CLASSIC TOYS AND BANKS

SATURDAY, NOVEMBER 7TH, 2020
AT 10AM



*Accepting quality consignments
for future sales.*

CONDITION GRADES

Mint (M)	98%+
Near Mint (NM)	97-98%
Pristine.....	95-96%
Excellent (EX)	90-94%
Very Fine (VF)	85-89%
Very Good	80-84%

**Prices realized may be downloaded
from liveauctioneers.com
immediately after the sale closes.**

RSL AUCTIONS: CONDITIONS OF SALE

1. RSL Auctions acts as an agent for the seller. The contract for the sale of the property is between the seller and the buyer. No statements made within this catalog or made by a representative of or employee of RSL Auctions shall be deemed to be a warranty, representation, or assumption of liability with respect to the property's age, condition, size, quality, variety, importance, provenance, or historical relevance. All property is sold "as is".

2. All sales are final.

3. Buyers are responsible for satisfying themselves concerning the condition of the property.

4. The auctioneer will be solely responsible for determining the bidding increments.

5. The auctioneer will be the final judge in deciding which bidder has won an item. In the event of a dispute, the auctioneer at his discretion, shall decide whether to reopen bidding or not.

6. LiveAuctioneer's Bids: in order to bid through LiveAuctioneers, you must first register on LiveAuctioneer's website. RSL Auctions reserves the right, in our sole discretion, to refuse your registration or participation in the auction or to revoke your permission to participate before, during or after the sale.

6A: Bidspirit Bids - in order to bid through Bidspirit.com you must first register on the Bidspirit.com website. RSL Auctions reserves the right, in our sole discretion, to refuse your registration or participation in the auction or to revoke your permission to participate before, during or after the sale.

7. Absentee Bids: If you are unable to attend the actual sale, RSL Auctions are authorized to execute bids on your behalf. Complete an Absentee Bid Form and return to RSL Auctions BEFORE the absentee bid deadline. We cannot accept "Buy" bids. In the event that two identical bids are received, the first bid form received by RSL Auctions will have preference.

8. Phone Bids: Phone bids will also be accepted. To qualify for a phone line the same procedure of authorization required for an absentee bid is required. A backup bid in the event a party cannot be reached by phone is not required, but strongly recommended. There are a limited number of phone lines available. In the event that there are more requests than lines available, preference will go to the highest bidding parties. In the event, whether human or technical, that a phone call is not made, disconnected or the bidder cannot be reached at the number left, the backup bid will be executed. RSL Auctions cannot guarantee that phone bids will be executed.

9. Submit all questions regarding upcoming auction items at least 48 hours prior to the date of auction. We will make every effort to answer all submitted questions in a timely manner. However, we cannot guarantee that questions submitted within 48 hours of the auction date will be answered prior to the auction.

10. The buyer is required to pay New Jersey sales tax 7% unless exemption is allowed under the laws regulating such tax. Dealers must present a valid tax ID certificate in order to qualify for exemption.

11. Payment may be made by cash, personal check or credit card. A 23.5% buyer's premium will be added to all successful bids. A 3.5% discount will be applied for payment made by cash or personal check making the buyer's premium 20% if paid within 15 days. **Discount only applied to payment made within this time frame.** An additional 5% will be added to bids made through liveauctioneers.com. An additional 4% will be added to all bids made through Bidspirit.com. RSL Auctions reserve the right to hold all merchandise paid by check until payment has been cleared by the bank. This may take up to one month.

12. All accounts are to be settled within 15 days of the end of the sale.

13. There will be a \$50 charge added to all wire transfers.

14. In the event property is not paid for in full, RSL Auctions may pursue one or more of the following rights or remedies. A) charge interest at 2% per month of the unpaid balance. B) hold the defaulting buyer liable for the total amount due and commence legal proceedings for its recovery together with interest, legal fees and costs to the fullest extent permitted under applicable law. C) cancel the sale D) resell the property E) pay the seller the amount up to the net proceeds payable in respect to the amount bid by the default buyer minus one bid. F) or to take such other action as we deem necessary or appropriate.

15. Shipping may be arranged through RSL Auctions. A shipping fee of \$20 per lot, \$80 per 5 lots or \$150 per 10 lots is charged plus the incurred postage and insurance. International and large items will incur additional costs. Shipped items may take up to 45 days to be delivered. Due to Coronavirus, we strongly recommended that all International Packages be shipped via DHL Worldwide Express. We will gladly obtain a shipping quote for customers.

However, if you prefer to ship via the US Postal Service or any other carrier, we will make the arrangements. RSL Auction Company will not guarantee timely delivery or be financially responsible for those shipments.

Additional Shipping and Handling charges for all packages are listed above.

16. RSL Auctions has the capability to ship to international bidders. **By law, RSL Auctions cannot, and will not, declare lesser values for any international purchases and all shipments will include the invoice with purchase totals including the buyer's premium and shipping cost. All international bidders are responsible for knowing their country's laws on importing items and for paying all customs and duties on the items.**

17. RSL Auctions are not responsible for any typographical errors or omissions in this catalog or price key. Photographs in this catalog are of the actual objects being sold but are not shown to scale.

18. RSL Auctions reserve the right to refuse admission, participation in or request the departure of any person/persons.

19. RSL Auctions reserves the right to withdraw any property before, during and after the sale and shall have no liability whatsoever for such withdrawal.

20. In no event will our liability to a purchaser exceed the purchase price actually paid. RSL Auctions will not be responsible for any errors or failures to execute bids placed online or for any errors or omissions in connection therewith including, without limitation, errors or failures caused by (i) a loss of connection to the internet or the LiveAuctioneers Online Platform software by either RSL Auctions or the client; (ii) a breakdown or problem with RSL Auctions or LiveAuctioneers' Online Platform software; or (iii) a breakdown or problem with a client's internet connection, mobile network or computer.

21. RSL Auction's content on LiveAuctioneers' Online Platform ("Web Site" or "Platform") is published and maintained by LiveAuctioneers. If you are a registered user of LiveAuctioneers, the LiveAuctioneers' Privacy Policy governs your agreement with LiveAuctioneers with respect to LiveAuctioneers' collection, use, storage, and disclosure of your personal information. RSL Auctions does not control and is not responsible for the information and privacy practices of LiveAuctioneers on the LiveAuctioneers' Web site, which is operated entirely by LiveAuctioneers. You agree that RSL Auctions and its affiliates will not be responsible for, and that you release RSL Auctions and its affiliates from, any and all claims, liabilities, damages, losses and expenses related to unauthorized access to or use of, or any security breach relating to or affecting, LiveAuctioneers collection, use, storage, and disclosure of your personal information.

22. If any part of these Conditions of Sale are found by any court to be invalid, illegal or unenforceable, that part shall be discounted and the rest of the conditions shall continue to be valid to the fullest extent permitted by law.

23. By bidding at auction, whether present in person or by agent, by written bid, telephone or other means, the buyer indicates acceptance of these Conditions of Sale.

24. The rights and obligations with respect to the Conditions of Sale shall be governed by the laws of the state of New Jersey.

25. All rights reserved. Entire contents Copyright 2020. RSL Auctions Copyright includes, but not limited to, print, media, microfilm and electronic media, such as CD-ROM's and online computer services.



Lot 1
Owl Bank - Slot in Book
 Kilgore Mfg. Company
 Westerville, OH - 1930
 Pristine Condition
 Estimate: \$950 - \$1250



Lot 2
Santa Claus at Chimney
 From their iconic Excelsior Series
 Shepard Hardware Company
 Buffalo, NY - Late 1880's
 Excellent Original Condition
 Estimate: \$1200 - \$1500



Lot 3
Owl Bank - Slot in Head
 Kilgore Mfg. Company
 Westerville, Ohio - 1930
 Near Mint Condition
 Estimate: \$1500 - \$1800



Lot 4
Organ Bank - Cat & Dog
 Made by Kyser & Rex Company
 Frankford, PA - Circa 1880's
 Excellent Condition with Key
 Estimate: \$500 - \$700



Lot 5
Medium Organ Bank
 Made by Kyser & Rex Company
 Frankford, PA - Circa 1880's
 Excellent Plus Condition
 Estimate: \$400 - \$500



Lot 6
Organ Bank - Boy & Girl
 Made by Kyser & Rex Company
 Frankford, PA - Circa 1880's
 Very Fine Condition with Key
 Estimate: \$600 - \$800



Lot 7

Home Bank - Yellow, Red & Gray

Made by J. & E. Stevens Company
Cromwell, CT - Circa 1880's
Very Fine Condition (Cupola Replaced)
Estimate: \$350 - \$450



Lot 8

Magic Bank - Green, Red & Brown

Made by J. & E. Stevens Company
Cromwell, CT - Circa 1880's
Very Fine Condition (2 Roof Hairlines)
Estimate: \$600 - \$800



Lot 9

Hall's Excelsior - Mauve, Red & Navy

Made by J. & E. Stevens Company
Cromwell, CT - Circa Mid 1870's
Excellent Plus Original Condition
Estimate: \$750 - \$950



Lot 10

Tank & Cannon Bank

Made by Starkie's England - Circa 1920
Excellent Original Condition
Estimate: \$1000 - \$1500



Lot 11

New Bank with Strong Squiggles

Made by J. & E. Stevens Company
Cromwell, CT - Circa Late 1870's
Excellent Plus Condition
Estimate: \$1500 - \$2000



Lot 12

Novelty Bank - Primary Colors

Made by J. & E. Stevens Company
Cromwell, CT - Circa Late 1870's
Very Fine Original Condition
Estimate: \$600 - \$800



Lot 13
William Tell Bank
 J. & E. Stevens Company
 Cromwell, CT - Circa 1896
 Very Good Original Condition
 Estimate: \$400 - \$600

Lot 14
'Spise a Mule Bank - Jockey
 J. & E. Stevens Company
 Cromwell, CT - Circa 1879
 Very Good Paint Condition
 (Replaced Mule Screw)
 Estimate: \$350 - \$450



Lot 15
Creedmoor Bank
 J. & E. Stevens Company
 Cromwell, CT - Circa 1880
 Fine Condition
 Estimate: \$325 - \$375



Lot 16
The Singing Minstrel
 Made by Chad Valley Ltd.
 Birmingham, England - 1940's
 Near Mint Condition
 Estimate: \$175 - \$225



Lot 17
Little Joe Bank
 By John Harper Ltd.
 Willenhall, England - 1931
 Excellent Plus Condition
 Estimate: \$400 - \$500



Lot 18
HOOP - LA Bank
 By John Harper Ltd.
 Willenhall, England - 1897
 Good Original Condition
 Estimate: \$600 - \$800



Lot 19
The Penny Pineapple Bank
 Commemorates Hawaii's Statehood
 Made by Im Swiler & Saylor
 York, Pennsylvania - Circa 1960
 Pristine Plus Condition
 Estimate: \$225 - \$275

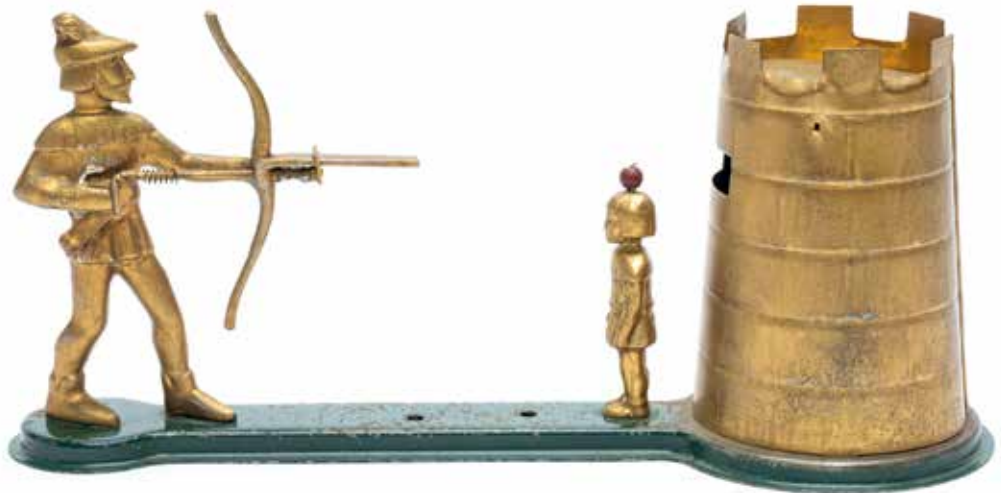
Lot 20
Humpty Dumpty Bank
 By Shepard Hardware Company
 Buffalo, New York - Circa 1890's
 Very Fine Paint Condition
 (Replaced Baseplate Screw)
 Estimate: \$500 - \$700





Lot 21
The Tennis Players Bank -
 Depicts the Matchup between
 Bobby Riggs & Billie Jean King
 The John Wright Company
 Pennsylvania - Dated 1975
 Mint Original Condition
 Estimate: \$400 - \$650

Lot 22
Australian William Tell Bank
 Sheet Steel & White Metal
 Brisbane - Circa 1939 - 14 1/2"
 Very Fine Original Condition
 Estimate: \$600 - \$800



Lot 23
Uncle Sam and the Arab
 The John Wright Company
 Pennsylvania - Dated 1975
 Mint Original Condition
 Estimate: \$400 - \$600



Lot 24
Two Elephant Swing Trunks

Made by A. C. Williams Company
Ravenna, OH - Circa 1920's
Both are Excellent Condition
Estimate: \$125 - \$175



Lot 25
Rabbit in Cabbage Bank

Marketed as "Flop Ears"
Made by Kilgore Mfg. Co.
Westerville, OH - 1930's
Very Good Condition
Estimate: \$300 - \$400



Lot 26
Trick Elephant Bank

Made by Hubley Mfg.
Lancaster, PA - 1930's
Pristine Plus Condition
Estimate: \$550 - \$750

Lot 27
'Spise the Mule Bank

By J. & E. Stevens Company
Cromwell, CT - Late 1890's
Excellent Original Condition
Estimate: \$750 - \$950



Lot 29
Large Double Window Vending Bank

"The Money Bank of Smart Children"
Made by the Stollwerck Chocolates Co.
Germany - Mid 1910's - 10 3/4" Tall
Excellent Plus Condition
Estimate: \$500 - \$700

Lot 28
Three Tin Litho Banks

England & Germany - 1940's
All are Excellent Condition
Estimate: \$125 - \$175



Lot 30
Battery Operated Cowboy Bank
and a "Watch Me Grow" Man

Japan & England - 1940's
Litho for both is Excellent
(Cowboy presently not operative)
Estimate: \$225 - \$275





Lot 31
Seated Kitten with Blue Bow
 Germany - Late 1910's - 4 1/4" T
 Excellent Original Condition
 Estimate: \$275 - \$375



Lot 32
Dachshund Pups on Henhouse
 With a Key-lock Trap
 Germany - Late 1910's - 3 1/4" L
 Very Fine Original Condition
 Estimate: \$400 - \$600



Lot 33
Bull Dog on His Haunches
 Germany - Late 1910's - 3 1/2" T
 Excellent Plus Original Condition
 Estimate: \$600 - \$800



Lot 34
Seated Dog with Muzzle
 Germany - 1920's - 4" T
 Beautifully Restored
 Estimate: \$400 - \$600



Lot 35
Magnificent Brown Barn Owl
 Germany - Late 1910's - 4 1/4" T
 Pristine Plus Original Condition
 Estimate: \$1250 - \$1750



Lot 36
Unusual Standing Terrier
 Germany - 1920's - 4 1/2" T
 Very Good (Old Period In-paint)
 Estimate: \$400 - \$600



Lot 37
Puppy with Toothache
 Germany - 1920's - 4" T
 Pristine Original Condition
 Estimate: \$400 - \$500



Lot 38
Elegant Bear with Top Hat
 Germany - 1910's - 5 1/4" T
 Pristine Plus Original Condition
 Estimate: \$1250 - \$1750



Lot 39
Gray Kittie with Toothache
 Germany - 1920's - 4" T
 Pristine Plus Condition
 Estimate: \$400 - \$600



Lot 40
Indian Head on Blue Tin Ball
 A Souvenir from Niagara Falls
 Germany - 1920's - 3 1/2" T
 Pristine Original Condition
 Estimate: \$400 - \$500



Lot 41
Chimney Sweep on Tree Stump
 Germany - 1900's - 4 3/4" T
 Excellent Original Condition
 Estimate: \$500 - \$700



Lot 42
Urchin with Hands in Pocket
 Standing Beside a Tin Sphere
 With Unusual Applied Bakelite Face
 Germany - Mid 1920's - 2 3/4" T
 Outstanding Mint Condition
 Estimate: \$800 - \$1000



Lot 43
Japanese Spaniel
 Germany - 1920's - 4 1/4" T
 Very Good Original Condition
 Estimate: \$200 - \$300



Lot 44
King Ferdinand of Prussia
 Germany - 1900's - 3 3/4" T
 Excellent Original Condition
 Estimate: \$750 - \$950



Lot 45
Sailor Boy Bank
 Germany - 1920's - 4 1/4" T
 Very Fine (Top of Cap Restored)
 Estimate: \$400 - \$500



Lot 46
Storks in Nest on Roof
 With Screw on Coin Trap
 Germany - 1920's - 4 1/4" T
 Expertly Restored
 Estimate: \$250 - \$350



Lot 47
Unattractive Girl with Book
 Depicts the Transgender
 Nightclub Performer Dan Leno
 Germany - 1920's - 5" T
 Excellent (Minor Restoration)
 Estimate: \$750 - \$950



Lot 48
Rabbit with Large Carrot
 Standing Beside a Giant Cabbage
 Germany - Late 1910's - 4 1/4" T
 Excellent Plus Original Condition
 Estimate: \$1500 - \$1800



Lot 49
Kitten Stealing Dog's Water
 Cat & Dachshund in Doghouse
 Germany - Late 1910's - 3 1/4" L
 Excellent Original Condition
 Estimate: \$400 - \$500



Lot 50
Rabbit Standing Beside Mile Marker
 & Tin Roly Poly Prussian Officer
 Germany - Both Circa 1910's
 Excellent Original Condition
 Estimate: \$225 - \$275



Lot 51
Dachshund Standing Beside
 Neatly Stacked Wood Logs
 Germany - 1920's - 5" L
 Pristine Original Condition
 Estimate: \$300 - \$400



Lot 52
Young Clown Deposits
 10 Pfennigs in a Barrel
 Germany - 1930's - 5" L
 Pristine Original Condition
 Estimate: \$250 - \$350



Lot 53
Sweet Ambling Pink Piglet
 With Key-Lock Trap
 Germany - 1920's - 4 3/4" L
 Very Fine (Some Old Repaint)
 Estimate: \$300 - \$400



Lot 54
Seated Grizzly Bear
 Unusual Redware Still Bank
 Germany - 1920's - 5 1/4" T
 Excellent Plus Condition
 Estimate: \$100 - \$150



Lot 55
Terrier and Gramophone
 Spelter and Sheet Tin
 Germany - 1920's - 4 1/4" L
 Excellent Original Condition
 Estimate: \$450 - \$650



Lot 56
Bird and Birdhouse
 Pretty Silvered Lead
 Germany - 1920's - 4 1/4" T
 Very Fine Original Condition
 Estimate: \$75 - \$125



Lot 57
Jack Russell on Patriotic Base
 Never Saw this Bank Before
 Post-War Japanese - 2 3/4" L
 MINT - MINT - MINT
 Estimate: \$250 - \$350



Lot 58
Brass Windmill Bank
 French - 1920's - 8" T
 Excellent Plus Condition
 Estimate: \$200 - \$300



Lot 59
Heavy Spelter Castle Bank
 Trap is the Drawbridge on Side
 Germany - Circa 1910's - 5" T
 Excellent Original Condition
 Estimate: \$300 - \$400



Lot 60
Columbia Tower
 Made by Grey Iron
 Mount Joy, PA - 7" T
 Very Good Condition
 Estimate: \$300 - \$375



Lot 61
Hall Clock with Paper Face
 Made by Hubley Mfg. Company
 Lancaster, PA - 1920 - 5 1/4" T
 Very Good Condition
 Estimate: \$225 - \$275



Lot 62
Apple on Three Leaves
 Made by Kyser & Rex
 Frankford, PA - 1880's
 Excellent Original Paint
 Estimate: \$950 - \$1250



Lot 63
Time Around the World
 Arcade Mfg. Company
 Freeport, IL - Circa 1920
 Pristine Plus Condition
 Estimate: \$200 - \$300



Lot 64
Two Lindbergh Airplane Banks
 The "Spirit of Thrift" and the
 "American National Bank"
 American - Circa Late 1920's
 Both are Excellent Condition
 Estimate: \$400 - \$600



Lot 65
**Two Korean War Era
 Demonstration Grenades**
 Later Fashioned into Banks
 American - 1950's - 3 1/2" & 4"
 Both are Excellent Plus Condition
 Estimate: \$400 - \$600



Lot 66
Two Fancy Silver-Plate Banks
 Wicker Basket with Handles
 and a Two Drawer Wardrobe
 Probably German - 1910's
 Both are Excellent Condition
 Estimate: \$200 - \$300



Lot 67
Share Cropper Bank

Made by A. C. Williams
Ravenna, OH - 1910's
Very Fine Condition
Estimate: \$125 - \$175



Lot 68
Three Mammy Paperweights

Different Color Dresses
Made by Hubley Mfg. Co.
Lancaster, PA - 1930's - 2 1/2"
All are in Pristine Condition
Estimate: \$250 - \$350



Lot 69
Mammy - Hands on Hips

Made by Hubley Mfg. Co.
Lancaster, PA - 1930's - 5 1/4"
Pristine Plus Original Condition
Estimate: \$175 - \$225



Lot 70
Mulligan the Policeman

Made by A. C. Williams
Ravenna, OH - 1920's
Excellent Plus Condition
Estimate: \$250 - \$325



Lot 71
Red Globe on Arc

Made by Grey Iron
Mount Joy, PA - 1910
Pristine Original Condition
Estimate: \$225 - \$300



Lot 72
Modern Share Cropper Bank

Distributed at 1979 NAACP Convention
Made by John Wright Foundry
Pennsylvania - Late 1970's
MINT with Original Box
Estimate: \$225 - \$275



Lot 73
Bear with Honey Pot

Made by Hubley Mfg. Co.
Lancaster, PA - Late 1930's
Pristine Plus Condition
Estimate: \$125 - \$175



Lot 74
Mammy with Laundry Basket

A Scarce White Metal Bank
American - 1930's - 5 1/4"
Pristine Original Condition
Estimate: \$250 - \$350



Lot 75
"Save For A Rainy Day"

Made by Hubley Mfg. Co.
Lancaster, PA - Late 1930's
Excellent Plus Condition
Estimate: \$125 - \$175



Lot 76

Very Scarce White Rooster

Made by Arcade Mfg. Company
Freeport, IL - 1920's - 4 5/8" T
Very Good Original Condition
Estimate: \$250 - \$350



Lot 77

Three Miniature Animal Banks

Lion, Elephant and Saddle Horse
Different Makers - 1920's & 1930's
Two Excellent & Lion Pristine
Estimate: \$225 - \$375



Lot 78

Prancing Horse on Oval Base

Made by A. C. Williams Company
Ravenna, OH - 1920's - 5 1/8" T
Pristine Plus Original Condition
Estimate: \$125 - \$175



Lot 79

Large Prancing Horse on Platform

Super Scarce
Made in Canada
Unknown Maker - 1920's - 7" T
Very Fine Original Condition
Estimate: \$350 - \$450



Lot 80

The "Lost Dog" Bank

Howling for his Master
Attr. To Judd Mfg. Company
Wallingford, CT - 1890's - 5 3/8" T
Provenance: Andy Moore Collection
Outstanding Paintwork & Japanning
Estimate: \$750 - \$950



Lot 81

Stiff Legged Elephant

Made by Harris Toy Company
Toledo, OH - Early 1900's
Very Good Condition
Estimate: \$275 - \$375



Lot 82

Circus Elephant

Made by Hubley Mfg. Co.
Lancaster, PA - Late 1930's
Pristine Plus Condition
Estimate: \$175 - \$225



Lot 83

Decorated Elephant on Tub

Made by A. C. Williams Company
Ravenna, OH - 1920's - 5 3/8" T
Near Mint and Very Bright
Estimate: \$150 - \$200



Lot 84
Medium Crown Bank
 Finished in Patriotic Colors
 By J. & E. Stevens Company
 Cromwell, CT - 1880's - 3 5/8"
 Very Fine Condition
 Estimate: \$250 - \$350



Lot 85
Miniature Cupola Bank
 By J. & E. Stevens Company
 Cromwell, CT - 1880's - 3 1/4"
 Excellent Original Condition
 Estimate: \$225 - \$275



Lot 86
Medium Crown Bank
 Powder Blue, Brown, Red & Yellow
 By J. & E. Stevens Company
 Cromwell, CT - 1880's - 3 5/8"
 Excellent Paint - (Damage Underneath)
 Estimate: \$250 - \$350



Lot 87
"DEPOSIT" Bank with Large Letters & Smaller Size State Bank
 Both By the Grey Iron Company
 Mount Joy, PA - 1910's - 4 1/4"
 Both are Mint Condition
 Estimate: \$175 - \$225



Lot 88
Lilliput Still Bank
 Finished in Patriotic Colors
 By J. & E. Stevens Company
 Cromwell, CT - Late 1870's - 4 1/2"
 Very Good All Original Condition
 Estimate: \$1500 - \$2000



Lot 89
The 1876 Bank and Medium Crown Bank
 Both by Judd Hardware
 Wallingford, CT - 1880's
 Both are Mint Condition
 Estimate: \$225 - \$275



Lot 90
Medium Cupola Bank
 Patriotic Colors & Mica Front
 By J. & E. Stevens Company
 Cromwell, CT - Circa 1880's
 Excellent Plus Condition
 Estimate: \$225 - \$275



Lot 91
Unusual Medium Cupola Bank
 Cherry Red, Green, Brown, White & Yellow
 With a Very Exceptional Stenciled Roof
 Made by the J. & E. Stevens Company
 Excellent Plus Original Condition
 Estimate: \$500 - \$700



Lot 92
Medium Cupola Bank
 With a Dynamic Roof
 By J. & E. Stevens Company
 Cromwell, CT - Circa 1880's
 Excellent Plus Condition
 Estimate: \$275 - \$375



Lot 93
Deluxe Painted Roof Bank
 Finished in Red, Black & White
 By J. & E. Stevens Company
 Cromwell, CT - Mid 1890's
 Very Fine Paint (Hairline by Twistpin)
 Estimate: \$300 - \$400



Lot 94
Large Crown Bank
 Tan, Brown, Green & Yellow
 By J. & E. Stevens Company
 Cromwell, CT - Late 1890's
 Excellent Original Condition
 Estimate: \$750 - \$950



Lot 95
Deluxe Painted Home Savings Bank
 Finished in Yellow, Tan & Khaki
 Made by Shimer Toy Company
 Pennsylvania - 1899 - 5 7/8" T
 Excellent Original Condition
 Estimate: \$275 - \$375



Lot 96
Crown Bank on Legs
 with a Flaring Crenellated Cupola
 Circa Late 1880's - 4 7/8" T
 Excellent Original Condition
 Estimate: \$750 - \$950



Lot 97
Very Scarce Park Bank
 Resembles an Armory Building
 Unknown American Manufacturer
 Circa 1880's - 4 3/8" x 4" x 3 3/8"
 Very Fine Original Condition
 Estimate: \$2500 - \$3000



Lot 98
Fancy Painted Double Door Bank
 Made by A. C. Williams Company
 Ravenna, Ohio - 1910's - 5 1/2" T
 Near Mint & Very Very Bright
 Estimate: \$350 - \$450



Lot 99
Large Cupola Bank
 Finished In Patriotic Colors
 By J. & E. Stevens Company
 Cromwell, CT - 1880's - 5 1/2" T
 Very Fine Condition
 Estimate: \$225 - \$275



Lot 100
The U. S. Treasury Bank
 Made by Grey Iron Company
 Mount Joy, PA - Late 1920's
 Very Fine Original Condition
 Estimate: \$350 - \$450



Lot 101
The 1882 Church Bank
 Deluxe Multi-Colored Finish
 Made by Kyser & Rex Company
 Frankford, PA - 1880's - 5 7/8" T
 Very Good Original Condition
 Estimate: \$400 - \$600



Lot 102
Pavilion Bank
 By Kyser & Rex Company
 Pennsylvania - 1880's
 Good Original Condition
 Estimate: \$250 - \$350



Lot 103
Witch's Gingerbread Cottage
 Hansel & Gretel meet the Witch
 French - Late 1890's - 3 7/8" T
 Excellent Plus Original Condition
 Estimate: \$950 - \$1250



Lot 104
Extremely Rare Crown Bank
 with Scalloped Roofline
 American - 1900 - 3 1/2" T
 Excellent Plus Condition
 Estimate: \$800 - \$1000



Lot 105
City Bank - Rare Deep Building
 By the H. L. Judd Company
 Wallingford, CT - 1890's
 Pristine Original Condition
 Estimate: \$950 - \$1250



Lot 106
The Villa Bank
 Made by Kyser & Rex
 Frankford, PA - 1895 - 5 1/2"
 Pristine Plus Condition
 Estimate: \$400 - \$600



Lot 107
City Bank with Teller
 Made by H. L. Judd Company
 Wallingford, CT - 1890's - 5 1/2"
 Excellent Plus Condition
 Estimate: \$300 - \$400



Lot 108
The Tower Bank
 By John Harper Ltd.
 England - 1910 - 9 1/4"
 Pristine Condition
 Estimate: \$300 - \$400



Lot 109
Columbian Recording Bank
 From 1892 Chicago Worlds Fair
 By the Magic Introduction Company
 American - Pat. 1891 - 6 5/8" Tall
 Virtually Mint Condition & Bright



Lot 110
The Columbia Tower
 By Columbia Grey Iron Co.
 Mount Joy, PA - 1897 - 6 7/8"
 Excellent Condition (Will Clean)
 Estimate: \$500 - \$700

This is a stunning example of this scarce recording bank.
 Nickel plated and black.
 Estimate: \$900 - \$1200



Lot 111
Small High Rise
 Made by Kenton Mfg.
 Ohio - 1920 - 3 1/4" T
 Excellent Plus Condition
 Estimate: \$125 - \$175



Lot 112
Second Smallest High Rise
 Made by Kenton Mfg.
 Ohio - 1920 - 4 3/4" T
 Pristine Condition
 Estimate: \$150 - \$200



Lot 113
Smallest Flat Iron Building
 Made by Kenton Mfg. Co.
 Ohio - 1920 - 3 1/4" T
 Excellent Condition
 Estimate: \$225 - \$275



Lot 114
Large Tiered High Rise
 Made by Kenton Mfg. Co.
 Ohio - 1920 - 5 7/8" T
 Excellent Original Condition
 Estimate: \$225 - \$275



Lot 115
Rare Largest High Rise
 Made by Kenton Mfg. Co.
 Ohio - 1920 - 7" Tall
 Excellent Plus Condition
 (Gold on Roof Restored)
 Estimate: \$2000 - \$3000



Lot 116
Second Largest High Rise
 Made by Kenton Mfg. Co.
 Ohio - 1920 - 5 1/2" T
 Excellent Condition
 Estimate: \$225 - \$275



Lot 117
Two Car Garage and
Colonial House with Porch

A. C. Williams Company
 Ravenna, OH - 1930's
 Both Excellent Condition
 Estimate: \$125 - \$175

Lot 118
Log Cabin Bank and
Japanned Quatrefoil

Mixed Manufacturers
 American - 1890's
 Both Excellent Condition
 Estimate: \$225 - \$275



Lot 119
City Bank with Garrett &
Small Woolworth Building

Mixed Manufacturers
 USA & England - 1910's
 Both Excellent Condition
 Estimate: \$125 - \$175



Lot 120
Smallest State Bank &
2nd Smallest State Bank

Made by Kenton Mfg. Co.
 Ohio - Circa Early 1900's
 Both Pristine (One Cap Ptd)
 Estimate: \$175 - \$225



Lot 121
Three Small Building Banks

Made by Mixed Manufacturers
 American - Early 20th Century
 Very Good to Excellent Condition
 Estimate: \$175 - \$225



Lot 122
Three Small Building Banks

All Made by A. C. Williams
 Ravenna, OH - Circa 1910's
 All in Excellent Condition
 Estimate: \$175 - \$225



Lot 123
Large Cupola Bank
 Burgundy, Red, White & Green
 By J. & E. Stevens Company
 Cromwell, CT - Circa 1880's
 Pristine Plus Condition
 Estimate: \$800 - \$1000



Lot 124
Building with Belfry
 Attr. to Ives, Blakeslee Company
 Bridgeport, CT - Early 1890's
 Outstanding Pristine Condition
 Estimate: \$3000 - \$4000



Lot 125
The Iron-master's House
 Combination Trap on the Bottom
 Made by Kyser & Rex Company
 Frankford, PA - Circa Mid 1880's
 Pristine Plus Original Condition
 Estimate: \$1750 - \$2250



Lot 126
Rare Pillar Box Alms Bank
 Styled as a Japanese Pagoda
 England - Circa Late 1880's - 10 1/4" High
 Brass, Sheet Steel & Cast Iron
 John & Adrian Haley Collection
 Very Good Condition
 Estimate: \$2500 - \$3500

This fascinating alms box was used to collect money for striking mail delivery workers. At this time, there are no other known examples of this unusual bank.



Lot 127
Globe Savings Fund Bank
 Made by Kyser & Rex Company
 Frankford, PA - Circa 1890
 Pristine Original Condition
 Estimate: \$3500 - \$4500

Decorative niches with statues, ornate windows and gargoyles are several of the exotic embellishments one finds on the Globe Savings Fund Bank. Very Very Exceptional Quality.



Lot 128
Man Seated on a Wicker Basket
 Made by Kyser & Rex Company
 Frankford, PA - Circa 1890
 Pristine Original Condition
 Estimate: \$750 - \$950



Lot 129
The Palace Bank with
Dark Jappaned Finish
 Made by Ives, Blakeslee Company
 Bridgeport, CT - Circa Early 1890's
 Near Mint with Great Gold Highlights
 Estimate: \$2500 - \$3500



Lot 130
Independence Hall Building Bank
 Deluxe Painted Expanded Version
 Made by Enterprise Mfg. Company
 Philadelphia, PA - Oct. 19, 1875
 Excellent Original Condition
 Estimate: \$1500 - \$2000



Lot 131
Gator Baiter Bell Toy

Made by Gong Bell Mfg.
East Hampton, CT - 1895 - 8 3/4" Long
Pristine Plus Original Condition
Estimate: \$2250 - \$2750

A young black boy is seen taunting an alligator with a bell that he rings to draw the animal's attention. He better be careful or he may be eaten by the ferocious gator. This represents an extremely superior example of this whimsical bell toy.

Lot 132
Ding Dong Bell Toy
Made by Gong Bell Mfg.
East Hampton, CT - 1895 - 9" Long
Pristine Original Condition
Estimate: \$1250 - \$1750

Johnny Green, who tried to drown pussy in the well, is seated on the right in his yellow smock. Good-natured Tommy Stout is the boy who rescues the cat. He is shown holding "Pussy" and calming her down on the left.



Lot 133
Scarce Articulated Fishing Toy

Made by the J. & E. Stevens Company
Cromwell, CT - Circa 1890's - 8 1/2" Long
Pristine Original Condition
Estimate: \$3500 - \$4500

The Stevens Company is predominantly known for its extraordinary output of mechanical toy banks, but it also produced a small, exclusive line of cast iron toys. This whimsical toy represents one of its best. A boy has seated himself on a tree stump and cast his line into the lake. As the toy is operated, we find that he has hooked a big silver fish, hopefully he will successfully reel his catch in and have a tasty dinner.





Lot 134
Sulky & Man Bell Toy
 Made by Watrous Mfg. Company
 East Hampton, CT - 1910 - 8 1/4"
 Excellent Original Condition
 Estimate: \$350 - \$450

Lot 135
Black Boy Riding Duck Bell Toy
 #58 by the Gong Bell Mfg. Company
 East Hampton, CT - 1895 - 7 1/4" Long
 Excellent Original Condition
 Estimate: \$2250 - \$2750



Lot 136
The Waddler Duck Bell Toy
 #48 by the Gong Bell Mfg. Company
 East Hampton, CT - 1895 - 5 1/2" Long
 Very Good Condition
 Estimate: \$800 - \$1200

Lot 137
Centennial 1776-1876 Bell Toy
 Made by the Gong Bell Mfg. Company
 East Hampton, CT - 1890 - 9 1/2" Long
 Excellent Plus Original Condition
 Estimate: \$950 - \$1250





Lot 138
Rare Articulated Doll Swing Toy

Probably made by Gong Bell Mfg.
 East Hampton, CT - Circa 1890's
 Near Mint Condition
 Estimate: \$1250 - \$1750

These rare and unusual doll swing toys were made in two sizes, of which this is the smaller. A red painted sheet steel cradle can accommodate the small doll house doll of your choice. The small spread-winged bird seen at the front of this toy greatly increases its charm.



Lot 139
Clown and Trained Dog
Jumping Through Circus Hoop

#44 Bell Toy Made by Gong Bell
 East Hampton, CT - Circa 1900
 Very Good Original Condition
 (Clown missing tip of right shoe and
 white dog with some old repainting)
 Estimate: \$1200 - \$1500

This "hard-to-find" bell toy is the largest platform bell ringer made at the close of the nineteenth century. A brass ratchet was used to effectuate the complex action that simulates the dog jumping through the hoop.



Lot 140
Magnificent Hansom Cab

Made by Wilkins Mfg. Company
Keene, NH - Early 1890's - 12" Long
Virtually Mint Condition
Estimate: \$1750 - \$2250

WOW!!! This early carriage by Wilkins is real dazzler and true showstopper. Please note the modified placement of the toy's guide wheel on the horse's second leg back.

Lot 141
Deluxe Two Seat Surrey

Made by Pratt & Letchworth Company
Buffalo, NY - Early 1890's - 16" Long
Pristine Original Condition
Estimate: \$2000 - \$2500

This toy is more typically found with wheels painted a vivid yellow. However, the black wheels with cranberry colored detailing are visually more appealing.



Lot 142
Rare & Desirable
Barouche Carriage

Made by Pratt & Letchworth Company
Buffalo, NY - Early 1890's - 17 1/2" Long
Excellent Plus Original Condition
Estimate: \$3000 - \$4000

This barouche represents one of the scarcest and most beautiful fancy carriage toys produced in the nineteenth century.



Lot 143
Important Early Hansom Cab

Made by the Welker & Crosby Company
Brooklyn, NY - Early 1890's - 12 1/2" Long
Pristine Original Condition
Estimate: \$3500 - \$4500

Toys produced by Welker & Crosby were highly detailed and considerably more costly than similar toys by their competitors. As a result, they went out of business in less than two years. Collectors typically have a burning desire to acquire examples from this esoteric toy maker.





Lot 144
Two Seat Brake
 By Hubley Mfg. Company
 Lancaster, PA - Circa 1906
 Excellent Original Condition
 (Figures with Minor Retouch)
 Estimate: \$2500 - \$3500

Among collectors of fancy carriage toys, the various sizes of brake coaches are reserved a paramount place of significance. No other group of children's toys evokes a nostalgic sense of travel in the late 19th century better than these large and impressive coaches.

Lot 145
Three Seat Brake
 • Scarce Expanded Version •
 By Hubley Mfg. Company
 Lancaster, PA - Circa 1906
 Excellent Original Condition
 Estimate: \$5000 - \$7000



This gorgeous green bodied coach with its red vent panels is truly something very magnificent to look upon. Children demanded faithful miniature replicas of the vehicles they saw on the streets and manufacturers were all too happy to satisfy this request. This expanded version of the three seat brake with driver and five passengers is extremely scarce and desirable.



Lot 146

Santa Sleigh

Made by Hubley Mfg. Company

Lancaster, PA - Circa 1910's

Pristine Plus Condition

Estimate: \$4500 - \$5500

Hubley's Santa sleigh is regarded as one of the most iconic cast iron toys ever produced and brought to market. The sandy white carriage is rendered like a cross between a billowy snowbank and a curvilinear seashell. At the front, we find an ethereal pair of reindeer. The galloping action makes their outstretched legs look as if they are summoning the energy to catapult Santa and the sleigh into the sky. Any child from the period would have been overjoyed to be gifted with such a beautiful plaything. This represents a positively sublime example of the toy.



Lot 147
Hygeia Ice Delivery Wagon

Made by Ives, Blakeslee Company
 Bridgeport, CT - Circa Late 1890's
 Excellent Plus Original Condition
 Includes Glass Ice Cubes & Tools
 Estimate: \$3000 - \$4000



Hygeia was the goddess of good health in Greek mythology. The ice company that bore this name used that association in their advertisement campaigns to suggest that cold fresh ice brought good health. This is the grand-daddy of all ice wagon toys!!! Collectors envy any other collector who has been able to find a splendid example of the Hygeia Ice Company's delivery wagon.

Lot 148
Rare Two Horse Military Caisson

Made by Ives, Blakeslee Company
 Bridgeport, CT - Circa Late 1890's
 Excellent Plus Original Condition
 Estimate: \$3500 - \$4500



In the last decades of the 19th century, the Ives Blakeslee Company began to produce a line of cast iron animal drawn toys of exquisite quality. No other company ever came close to equaling the level of detail and design that Ives deployed in their toy production. As a consequence, their toys were very expensive as compared to those made by their competitors. For example, notice the exceptional dynamism of these running horses with their elegant outstretched limbs. This toy represents the very scarce 1896 period version of their caisson. It is of exquisite quality and includes the original cannon with both original figures.



Lot 149
"PURITAN" Paddlewheeler
 Made by the Wilkins Toy Company
 Keene, NH - Late 1890's - 10 3/4" L
 Pristine Plus Condition
 Estimate: \$1200 - \$1500

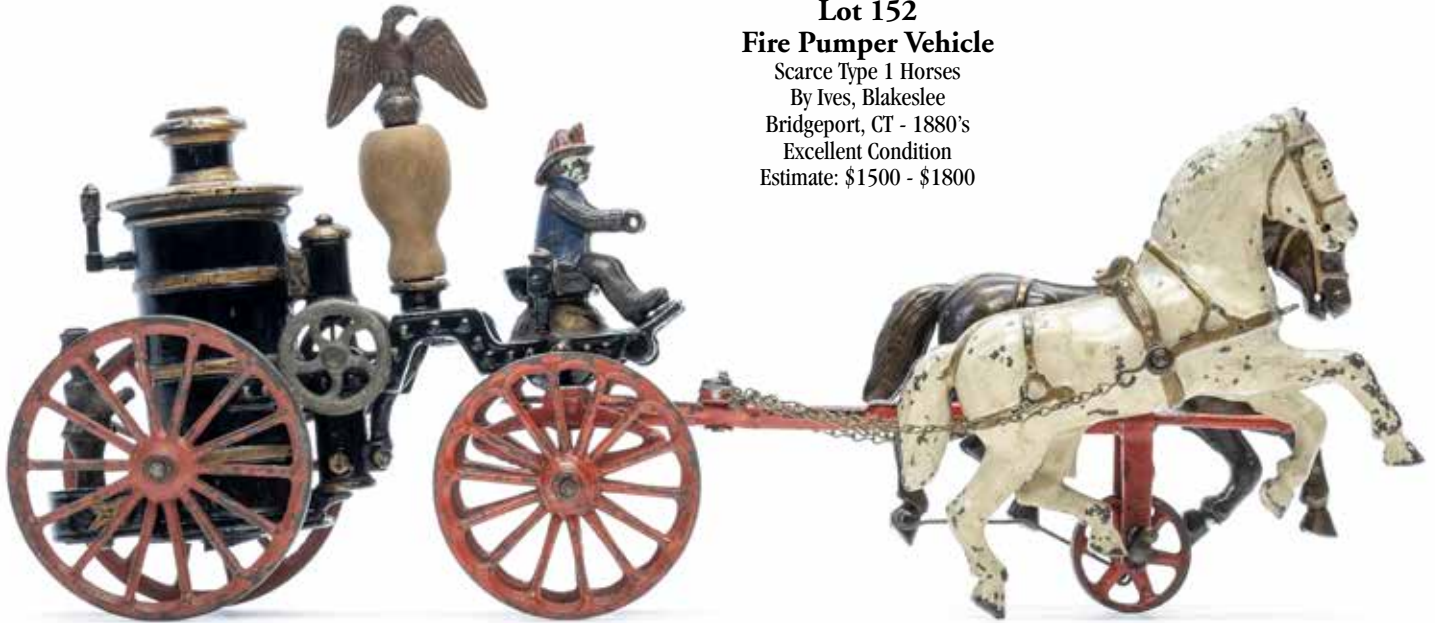
Lot 150
Very Rare Sleek Steam Launch
 Made by the Ives, Blakeslee Company
 Bridgeport, CT - Circa 1895 - 11 1/2" L
 Excellent Plus Original Condition
 Estimate: \$2250 - \$2750



Lot 151
"A Century of Progress"
 Chicago Worlds Fair Transport Bus
 Made by Arcade Mfg. Company
 Freeport, IL - 1933 - 14" Long
 Pristine Condition (Replaced Screw)
 Estimate: \$550 - \$750

Lot 152
Fire Pumper Vehicle

Scarce Type 1 Horses
 By Ives, Blakeslee
 Bridgeport, CT - 1880's
 Excellent Condition
 Estimate: \$1500 - \$1800



The Ives, Blakeslee Company made some of the most beautifully detailed and complex toys in the 19th century. Their efforts far exceeded those of even their nearest rivals. Examining their product line, one sees that Ives achieved the highest level of verisimilitude for their creations, for which they garnered much praise and many prizes. In fact, Ives, Blakeslee was selected to represent the toy industry at the Centennial Fair in Philadelphia because they were viewed as preeminent in the field. In the mid 1880's, the Ives Company marketed a group of five fire vehicles under the "Phoenix Series" brand name. They include a pumper, hook & ladder, patrol wagon, hose reel and a very scarce chief's wagon. In his landmark book "The Toy Collector", Louis Hertz described this quintet of fire toys as a veritable "royal flush" because he felt they represented the apogee of quality in cast iron toy production.



Lot 153
Fire Patrol Vehicle

with Type 2 Horses
 By Ives, Blakeslee
 Bridgeport, CT - 1880's
 Excellent Condition
 Estimate: \$1500 - \$1800

Lot 154
Hose Reel Fire Toy
 Made by Dent Hardware Company
 Fullerton, PA - Early 1910's - 21" Long
 Gertrude Hegarty Collection
 Near Mint Condition & Bright
 Estimate: \$3500 - \$4500



Gertrude Hegarty was an antique toy collecting pioneer long before it came into great fashion. She was married to her beloved Covert in the late 1920's. For her wedding present, she asked her father for the unsold shop stock in the basement of his trading goods store. This represented a trove of approximately 350 unused toys that had been left over from the Christmas of 1912. Apparently, that winter, children had become more entranced with the automotive versions of fire vehicles rather than these antiquated looking horse drawn vehicles. After WWII, Mrs. Hegarty used her group of MINT toys as "traders" with other collectors. And thus, they were disbursed into the hands of adoring collectors. Today, toys with the Hegarty Provenance are seen as enviable acquisitions.

Lot 155
Oversized Fire Pumper
 Made by Kenton Mfg. Company
 Ohio - Circa 1910 - 25" Long
 Very Fine Condition (Hoses New)
 Estimate: \$2000 - \$3000



Oversized horse drawn fire vehicles are considered extremely desirable by collectors. With its impressive white body and gold boiler, this toy would have been the envy of any child lucky enough to receive such a gift. Over the many years that we have collected toys, we have seen very few examples of this particular toy.



Lot 156
Horse and Jockey Stick Toy

Made by Wilkins Toy Company
 Keene, NH - Circa 1911 - 30" Long
 Near Mint Condition & Very Bright
 Estimate: \$750 - \$950

Stick toys were probably made for toddlers who were beginning to walk on two feet. This type of toy would essentially function as a cane does for an older person who needs to steady their balance. Apparently, Little Johnny never had the chance to play with this toy because the condition is unparalleled



Lot 157
Oversized 3 Horse Hook & Ladder Vehicle

Made by Kenton Mfg. Company
 Ohio - Circa 1910 - 33" Long
 Very Fine Original Condition
 Estimate: \$2250 - \$2750

WOW - This beauty is ginormous!!! It comes complete with both original firemen, ladder supports and five blue & red ladders. A true masterpiece that's suitable for any mantle in the house.



Lot 159
Art Deco Styled Coupe
 Made by Meccano Ltd.
 Liverpool, England - 1932 - 8"
 Excellent Condition (Retouch)
 Estimate: \$250 - \$350



Lot 158
Four Door Model T Sedan
 Made by Gebruder Bing
 Nuremberg - Circa 1925 - 6"
 Pristine Plus Condition
 Estimate: \$350 - \$450



Lot 160
Four Door Model T Sedan
 Made by Gebruder Bing
 Nuremberg - Circa 1925 - 6"
 Very Fine Condition
 Estimate: \$250 - \$350



Lot 161
Early Automotive Fire Pumper
 With Three Original Firemen
 Made by Sigmund Gunthermann
 Germany - Circa 1910's - 8 1/4"
 Fine Condition
 Estimate: \$750 - \$950

Lot 162
Rare Tinplate "219" Delivery Lorry
 Made by Orobr Manufacturing
 Germany - Circa 1920 - 7 3/4"
 Excellent Lithography Condition
 (Left Rear Door Lacks 2 Tabs)
 Estimate: \$500 - \$700



Lot 163
Chauffeured Laudelette
 Made by Hans Eberl Toys
 Germany - Circa 1914 - 8" Long
 Very Fine Original Condition
 Estimate: \$350 - \$450



Lot 164
Early Automotive Phaeton
 With Chauffeur & Two Passengers
 Made by Georges Carette Ltd.
 Germany - Circa 1912 - 9" Long
 Very Good Original Condition
 Estimate: \$1200 - \$1500



Lot 165
Deluxe Two Seat Touring Car with
 Early Motorist & Indicator Lights
 Made by Hans Eberl Toys
 Germany - Circa 1914 - 11" Long
 Excellent Condition
 Estimate: \$1250 - \$1750



Lot 166
Scarce Two Seat Touring Car with
 Tufted Seats & Original Driver
 Made by Fischer Manufacturing
 Germany - Circa 1912 - 12" Long
 Very Good Condition (Lacks Lamps)
 Estimate: \$1750 - \$2250

Lot 167
Fancy Chauffeured Limousine

Finished in French Blue and Gray
 With Red and Gold Detailing
 Made by Ebo Motor for Hans Eberl
 Germany - Circa 1914 - 11" Long
 Pristine Condition (One Door Restored)
 Estimate: \$1500 - \$1800



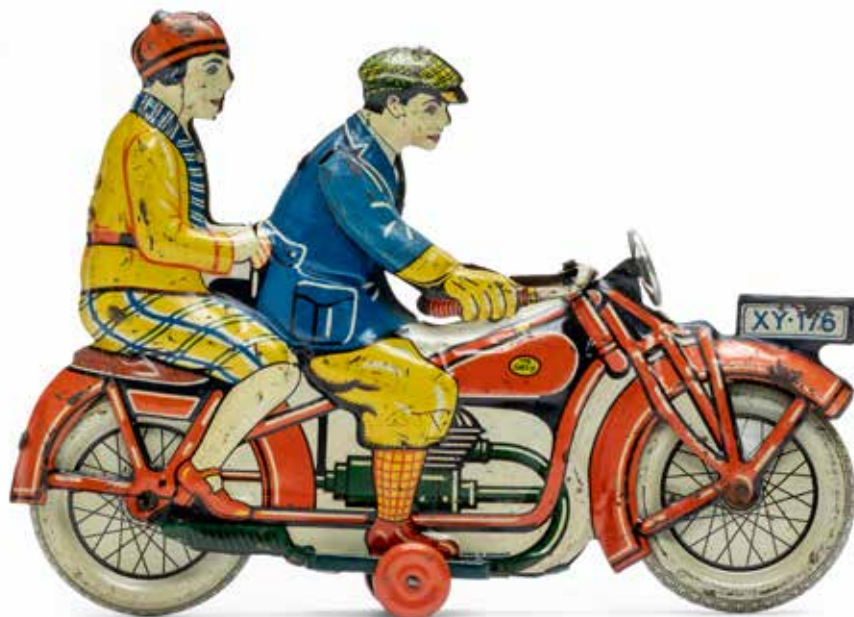
Lot 168
Art Deco Saloon Car

Finished in Red and Black
 With Cream Colored Details
 Made by Gebruder Bing Company
 Nuremburg - Circa 1928 - 10 1/2"
 Excellent Condition
 Estimate: \$750 - \$950

Lot 169
Fancy Chauffeured Limousine

Finished in Ivory and French Blue
 With Gold and Blue Detailing
 Made by Hans Eberl Toys
 Germany - Circa 1910's - 11" Long
 To the eye, this car looks Mint but this
 piece is 100% expertly refurbished.
 Estimate: \$950 - \$1250





Lot 170
Two Person Civilian Motorcycle

Made by George Levy Company
 Germany- 1930's - 8 1/2" Long
 Excellent Condition (Light Surface Rust)
 Estimate: \$1200 - \$1500

Lot 171
Two Person Civilian Motorcycle

With Friction Drive Mechanism
 Made by Rico Manufacturing
 Spanish - Early 1950's - 9 1/4"
 Very Fine Condition & Works Well
 Estimate: \$500 - \$700



Lot 172
Civilian Motorcycle with Saddle Bags

Friction Drive Mechanism
 Made by Tippco & Associates
 Western Germany - 1950 - 11" Long
 Decent Condition (Lacks Windscreen)
 Estimate: \$150 - \$200



Lot 173
Side Unloading Dump Truck

Made Victor Bonnet Cie.
French - Circa 1920 - 8"
Excellent Condition
Estimate: \$375 - \$500



Lot 174
Bonzo on Scooter

Listed as Bell # 255 on toy
Italian - 1930's - 6"
Excellent Plus Condition
Estimate: \$400 - \$600



Lot 175
Felix the Cat & Bull Dog

Sheet Steel with Celluloid Figures
Unknown American Manufacturer
USA - Circa 1930's - 12" Long
Near Mint Condition
(Celluloid elements have some dents and cracks)
Estimate: \$3000 - \$4000

Felix stands precariously on the edge of a fence
He taunts the bulldog who is hidden inside his doghouse. When the toy is pushed or pulled, the unique chain driven mechanism causes the dog to emerge from his house to chase Felix away. At this time, there is only one other known specimen of this rare toy. Here's a golden opportunity to add a great rarity to your collection.



Lot 176
Fortunello & Dog On Scooter

Listed as Bell #258 on the toy
Italian - 1930's - 6" Long
Pristine Condition
Estimate: \$1000 - \$1500

Lot 177
Pinocchio on Scooter

Listed as Bell # 257 on toy
Italian - 1930's - 6" Long
Pristine Plus Condition
Estimate: \$1000 - \$1500





Lot 178
Art Deco Four Door Limousine
 Made by the Tipp Company
 Finished in Burnt Orange & Maroon
 Germany - Circa 1928 - 15 1/2"
 License Plate T. C. 22734
 Excellent Original Condition
 (Very Minor Denting & Some Fade, Lacking Hood Ornament)
 Estimate: \$1500 - \$2000



Lot 179
Large & Impressive Limousine
 Made by Georges Carette
 Germany - Early 1910's - 16"
 Excellent Plus Condition
 Estimate: \$4000 - \$5000

This iconic automobile was a favorite with children from Carette's output. It represents an upgraded deluxe model with beveled glass windows.



Lot 180
Magnificent Tinplate Laudelette

1908 Renault Model 50 CV
 With Original Bisque Chauffeur
 Made by the Hispania Company
 Barcelona - Circa 1908 - 22" Long

Very Good Condition (Driver's door & one passenger door are old replacements, some mud guards reattached and very nominal period in-painting. All-in-all, in a fine state of preservation given the size & vintage of this toy.)

Estimate: \$10,000 - \$15,000

Hispania produced an exclusive and expensive line of toys at the beginning of the Twentieth Century. For this output, they often used lavish materials such as the brass trim found on the hood of this gorgeous Renault. Brass is also used to create the headlights and indicator lights. Their brilliant simulation of automotive spoked wheels has no equal in the long history of toy making. Toys from the Hispania Company are as scarce as hen's teeth and only seldom come to market. This is a golden chance to add a very rare piece to your collection.





Lot 182
Officer & Five Infantry Soldiers
 Made of Papier-mâché & Wood
 Probably German - 1910's - 4" Tall
 Excellent Condition (Minor Play Wear)
 Estimate: \$300 - \$400



Lot 183
Five Hitler Figures
 By Elastolin & Lineol
 Germany - 1930's - 3" Tall
 Very Good (Play Wear)
 Estimate: \$225 - \$275

Lot 181
Nine Historical Figures
 Lineol, Elastolin & Durso
 Germany & Belgium - 1930's
 Very Good Condition (Age Wear)
 Estimate: \$250 - \$350



Lot 184
Tin Litho Clockwork Floor Train
 Made by the Issamayer Company
 Germany - Circa 1910 - 33" Long
 Overall Excellent Condition
 (Mechanism re-attached and presently not working. Missing drive pistons and the mail car's roof appears to be restored)
 Estimate: \$1000 - \$1500



Lot 185
Extraordinary Fifteen Piece
 Marching Military Band
 Made of Papier-mâché & Wood
 Probably German - 1910's - 4 1/2"
 Pristine Plus Original Condition
 Estimate: \$1200 - \$1500

This is definitely one of the prettiest group of objects to come from the apartment in Rome. Musicians include a bassoonist, flute players, clarinetists, a trumpeter, drum players, a cymbalist, tuba players, horn players and the band leader.



Lot 186
Swimming Seal Novelty

Made of Wood & Sheet Tin
Germany - 1900's - 8" Long
Very Fine Operative Condition
Estimate: \$350 - \$450



Lot 187
Dog Snapping at Boy

Lithographed Novelty Toy
Germany - 1920's - 6" Tall
Excellent - Some Old Overpaint
Estimate: \$250 - \$350



Lot 188
Articulated Charlie Chaplin

Made by Bucherer Toys
Germany - 1920's - 7 1/2" Tall
Excellent Condition (Needs Jacket)
Estimate: \$250 - \$350



Lot 189
Flag Waving Young Boy

Mussolini's Little Fascist
Prewar Japan - 7 1/2" Tall
Near Mint with Cardboard Box

We have never ever seen this celluloid toy before.
Outstanding Boxed Condition
Estimate: \$400 - \$500



Lot 190
Articulated Peasant Woman

Made by Bucherer Toys
Germany - 1920's - 7 1/2" Tall
Beautiful Costume - 1 Hand Damaged
Estimate: \$125 - \$175



Lot 191
Circus Clown Bell Toy

Probably by Doll & Cie.
Germany - 1930's - 13 1/2" L
Pristine Plus Condition
Estimate: \$300 - \$400



Lot 192
Clown Chasing Equestrians

Probably by Doll & Cie.
Germany - 1930's - 10 1/2" L
Very Fine - Mechanism Re-attached
Estimate: \$225 - \$275



Lot 193
Buffalo Bill on the Back of his
White Steed "Old Charlie"
 Possibly made by Gunthermann
 Germany - Late 1890's - 6 1/2" Long
 Very Good (Minor Repaint Throughout)
 Estimate: \$400 - \$600



Lot 194
Bad Boy Seated Backwards
 Made by Ferdinand Martin of Paris
 French - Circa 1900 - 7" Tall
 Very Fine Original Condition
 Estimate: \$1800 - \$2500



Lot 195
Prussian Cavalry Officer
 Possibly made by Gunthermann
 Germany - Late 1890's - 6" Long
 Excellent Paint Condition
 Estimate: \$550 - \$750



Lot 196
The Hot Chestnut Vendor
 Made by Ferdinand Martin of Paris
 French - Early 1900's - 7 1/2" Tall
 Excellent Original Condition
 Estimate: \$1250 - \$1750



Lot 197
The Giant Pecking Chicken
 Made by Toyodo and Company
 Japan - Circa 1910's - 7 1/4" Long
 Excellent Plus Original Condition
 Estimate: \$550 - \$750



Lot 198
Happy Jack & Happy James
 Unusual Steam Toy Attachment
 Made by William Kraus (WK)
 Excellent Original Condition
 Estimate: \$350 - \$450



Lot 199
Two Schuco Mouse Toys
 Beer Drinker & Dancers
 Germany - Late 1930's
 Very Good Condition
 Estimate: \$125 - \$175



Lot 200
Banana Joe Novelty Toy
 Made by Peter Pan Toys
 England - Late 1940's
 Pristine Original Condition
 Estimate: \$75 - \$100



Lot 201
Two Schuco Animal Toys
 Honey Badger & Clown Mouse
 Germany - Late 1930's
 Very Good Condition
 Estimate: \$125 - \$175



Lot 202
"The Mystery Ball"
 Equilibrist Circus Act in which a
 Man Defies the Laws of Gravity
 Made by Fernand Martin
 France - Circa 1910's
 Excellent Plus Condition
 Estimate: \$600 - \$800



Lot 203
Paddy's Dancing Pig
 By Ernst Paul Lehmann
 Germany - Early 1910's
 Very Fine Condition w/ Box
 (Minor Fabric Losses)
 Estimate: \$1250 - \$1750

Lot 204
Fantasy Aeronautical Parachutist

Made by Sigmund Gunthermann
 Germany - Early 1900's - 14" x 19"
 Outstanding Original Condition
 Estimate: \$2000 - \$3000



Lot 205
Fisherman Seated On Rock

Made by Ferdinand Martin
 French - Early 1900's - 8"
 Pristine Original Condition
 Estimate: \$3500 - \$4500



Lot 206
Bleriot Monoplane Balance Toy

Unknown German Manufacturer
 Germany - Circa 1910 - 13" x 19"
 Excellent Original Condition
 Estimate: \$1200 - \$1500



Lot 207
Small Clockwork Sulky
 with Gold Lead Wheels
 French - Circa 1910 - 5 3/4"
 Very Good Condition
 Estimate: \$350 - \$450



Lot 208
Lehmann Motor Coach
 Germany - 1910's - 5 1/8"
 Excellent Condition
 Estimate: \$250 - \$350



Lot 209
Military Officer in a Gig
 Rare Clockwork Novelty Toy
 Germany - 1910 - 7 3/4"
 Excellent Original Condition
 (Horse Foreleg Missing)
 Estimate: \$300 - \$400



Lot 210
Five Unusual Dexterity Toys
 Germany - Circa 1910's & 20's
 Very Good to Excellent Plus
 Estimate: \$275 - \$375



Lot 211
Lady Vendor Gyroscope Toy
 Made by Richard Freres
 Marked R Deposé F
 French - Circa 1895 - 5" Long
 Very Good Condition
 (One Spoke Detached)
 Estimate: \$250 - \$350



Lot 212
Fishmonger Dealer & Cart
 with Molded Eels & Fish
 Made by Richard Freres
 Marked R Deposé F
 French - Circa 1890's - 6" Long
 Very Good Condition
 Estimate: \$350 - \$450



Lot 213
Two Penny Toy Trains
 Windup CKO Trolley and a
 Gyroscopic Locomotive
 German & French - Circa 1910's
 Very Fine Original Condition
 Estimate: \$150 - \$250



Lot 214
Two Boattail Race Cars
 Lithographed Penny Toys
 Germany - Early 1920's
 One is Pristine & One is Fair
 Estimate: \$250 - \$350



Lot 215
Two Penny Toy Trolley Cars
 Gyroscopic Example by Rosignol &
 Unusual pre-war Japanese by Kamiya
 France & Japan - Circa Early 1920's
 Very Good Original Condition
 Estimate: \$200 - \$300



Lot 216
Gnomes Sawing Penny Toy
 Probably by Meier
 Germany - 1910's
 Very Good Condition
 Estimate: \$125 - \$175



Lot 217
Two Penny Toy Banks
 Chalet & the Witch's Cottage
 Germany - Circa Late 1910's
 Very Good Condition
 Estimate: \$150 - \$250



Lot 218
Blacksmith Gnomes Penny Toy
 Probably by Meier
 Germany - 1910's
 Very Good Condition
 Estimate: \$125 - \$175



Lot 219
Two Picnic Basket Penny Toys
 Wonderfully Colorful Graphics
 Germany - Circa 1920's
 Very Good Condition
 Estimate: \$125 - \$175



Lot 220
Two Easter Egg Penny Toys
 & a Rattle with Noisemaker
 Germany - Circa 1910's
 Good to Excellent Condition
 Estimate: \$150 - \$250



Lot 221
Two Canine Penny Toys
 Germany - Circa 1920's
 Both Very Good Condition
 (Bonzo Lacks Tail & Dog Lacks Wheels)
 Estimate: \$150 - \$200



Lot 222
Two Military Penny Toys
 Germany - Circa Late 1910's
 Very Good Condition
 Estimate: \$200 - \$300



Lot 223
George Levy Mechanical
 Stork Pin & Penny Toy Train
 Germany - Circa 1920's
 Very Good Condition
 Estimate: \$75 - \$125



Lot 224
Penny Toy Caisson
 & Water Sprinkler Cart
 Germany - Circa 1920's
 Excellent (Lacks Cannon)
 Estimate: \$150 - \$250



Lot 225
Rare Irish Mail Penny Toy
 with Gyroscopic Action
 Probably by J. Meier
 Germany - 1910's
 Very Good Condition
 Estimate: \$325 - \$375



Lot 226
Children Riding in a
 Playground Gondola Swing
 Made by J. Meier
 Germany - 1910's
 Excellent Condition
 Estimate: \$225 - \$325



Lot 227
Penny Toy Ladder Truck
 Possibly by J. Meier
 Germany - Circa 1910's
 Very Good Condition
 Estimate: \$225 - \$275



Lot 228
Penny Toy Boy & Rabbit
 Seated in a Rocking Chair
 Probably by J. Meier
 Germany - Circa 1910's
 Very Good Condition
 Estimate: \$350 - \$450



Lot 229
Clown in Barrel Penny Toy
 with Unusual Weighted Action
 Made by the Stock Company
 Germany - Circa Early 1920's
 Excellent Plus Condition
 Estimate: \$400 - \$600



Lot 230
Penny Toy of Mother & Child
 in a Rolling Perambulator
 Made by J. Meier Company
 Germany - Circa 1910's
 Pristine Plus Condition
 Estimate: \$250 - \$350



Lot 231
Brewery Truck Penny Toy
 with Gyroscopic Action
 Probably by J. Meier
 Germany - Circa 1910's
 Very Good Condition
 Estimate: \$250 - \$350



Lot 232
Rocking Horse Penny Toy
 Probably by J. Meier
 Germany - Circa 1910's
 Very Good Condition
 Estimate: \$250 - \$350



Lot 233
Unusual Penny Toy
 Coach for Hire
 Never Saw This One Before
 Germany - Circa 1910's
 Good Original Condition
 Estimate: \$200 - \$300



Lot 234
Green Boat-tail Race Car
 Unusual French Penny Toy
 Circa 1930's - 3 1/2" Long
 Excellent Condition
 Estimate: \$75 - \$125



Lot 235
Three Penny Toys
 Doll House Clock, Beetle
 & Articulated Crocodile
 Germany - Circa 1930's
 Very Good Condition
 Estimate: \$100 - \$150



Lot 236
Red Boat-Tail Race Car
 Unusual French Penny Toy
 Circa 1930's - 3 1/2" Long
 Pristine Condition
 Estimate: \$75 - \$125



Lot 237
Rare Ocean Liner Penny Toy
 Made by the Ingap Company
 Italian - Circa 1930 - 6" Long
 Good Original Condition
 Estimate: \$225 - \$275



Lot 238
Three Novelty Penny Toys
 Requires Breath Support
 Germany - Circa 1930
 Very Good Condition
 Estimate: \$350 - \$450



Lot 239
Clockwork Penny Toy
 Two Funnel Ocean Liner
 Germany - Circa 1925
 Pristine Condition
 Estimate: \$275 - \$325



Lot 240
Penny Toy Train Set &
 Penny Toy Hay Wagon
 Germany - Circa 1930
 Both Pristine Condition
 Estimate: \$150 - \$250



Lot 241
Clockwork Penny Toy Tank
 & Six Infantry Men on Bases
 Germany - 1910's & 1935
 All Pieces are Pristine Condition
 Estimate: \$150 - \$250



Lot 242
Two Fire Truck Toys
 & One Art Deco Sedan
 Fire Trucks are by PAYA
 Spain & Germany - 1930's
 All Pieces are Pristine Condition
 Estimate: \$200 - \$300



Lot 243
Three Female Swimmers
 Japanese - 1930's - 6" & 6 1/2"
 Two Are Self Winding
 Excellent Condition
 Estimate: \$75 - \$125



Lot 244
Tin Container for Vernetti
 Decorated with Images of
 Disney Cartoon Characters
 Italian - Circa 1945 - 4 1/2" x 8 1/2"
 Excellent Condition (Some scratching)
 Estimate: \$400 - \$500



Lot 245
Three Celluloid Windup Toys
 Includes a Waltzing Couple, Skaters
 and a Naked Henry Wearing a Barrel
 Japanese - 1940's - Tallest is 6"
 Excellent Original Condition
 Estimate: \$200 - \$300



Lot 246
Four Celluloid Toys
 Includes Girl on Phone, Bathing Beauty,
 Grinning Clown and Mickey Mouse
 Japanese - Circa 1930's - Tallest 7 1/2"
 Varying Conditions Mostly Very Good
 Estimate: \$125 - \$175



Lot 247
Advertising Tin for Lavera Brand
 Coffee and Other Food Stuffs
 Italian - Circa 1920's - 9 1/2" x 11" to
 Excellent Condition (Some Dents)
 Estimate: \$75 - \$125



Lot 248
Popeye & Punching Bag
 Fascinating Windup Novelty Toy
 Made of Pressed Plaster & Tin
 Marked S. A. Bordoli - Bologna
 Italian - Late 1930's - 5 1/4"
 Pristine Plus Condition
 Estimate: \$400 - \$600



Lot 249
Four Plaster Modernist Women
 Includes a Military Woman, A Dancer
 & a Woman Riding a Large Silver Fish
 European - Art Deco - Tallest is 6"
 Very Good Original Condition
 Estimate: \$75 - \$125



Lot 250
"Estratto Olandese Elefante"
 Coffee Tin with Great Graphics
 Italian - Circa 1920's - 9" x 15"
 Excellent Plus Condition
 Estimate: \$200 - \$250



Lot 251
Four Humorous Wood Construction Toys
 Includes a Beefeater, Sailor, Mexican & Clown
 Czechoslovakia - Circa 1950 - Tallest is 6 3/4"
 Pristine Original Condition
 Estimate: \$125 - \$175



Lot 252
#25 Racing Motorcycle

Made by Huki - 3 1/2" Long
US Zone Germany - 1940's
Pristine Original Condition
Estimate: \$75 - \$125



Lot 253
**Schuco Cuervo 1000 &
Schuco Motodrill 1006**
With the Original Boxes
US Zone Germany - 1940's
Toys Pristine - One Box Damaged
Estimate: \$150 - \$250



Lot 254
Penny Toy Motorcycle

Germany - Circa 1930's
Pristine Lithography
Handlebar Probably Replaced
Estimate: \$75 - \$125



Lot 255
Blue Motorcycle with Saddle Bags

Scarce German Tin Litho Chopper
Germany - 1930's - 4 1/2" Long
Excellent Plus Condition
(Presently Not Operative)
Estimate: \$250 - \$350



Lot 256
Rare & Unusual Motorcycle

Possibly PAYA or RICO
Spanish - 1930's - 5 1/4" Long
Good Condition (No Mechanism)
Estimate: \$150 - \$250

Lot 257
Large Boxed Motorcycle

Made By Paya - 11 1/2" Long
Spanish - Circa 1950's
Pristine Condition (Box Good)
Estimate: \$350 - \$450



Lot 258
Painted Battleship

By Gebruder Bing
 Germany - 1930's - 12" L
 Excellent Condition
 Estimate: \$300 - \$400



Lot 259
V-57 Gunboat
 Made by Ventura Toys
 Italy - 1930's - 13 1/2" L
 Pristine Condition

Fascinating winding mechanism is the mast.
 This is an early toy by Ventura of Italy.
 Estimate: \$350 - \$450



Lot 260
11 1/2" Sparking Warship

Finished in Gray & Red
 Made by Arnold Toys
 US Zone Germany - 1940's
 Mint with Box Top & Key
 Estimate: \$250 - \$350



Lot 261
13 3/4" Ocean Liner

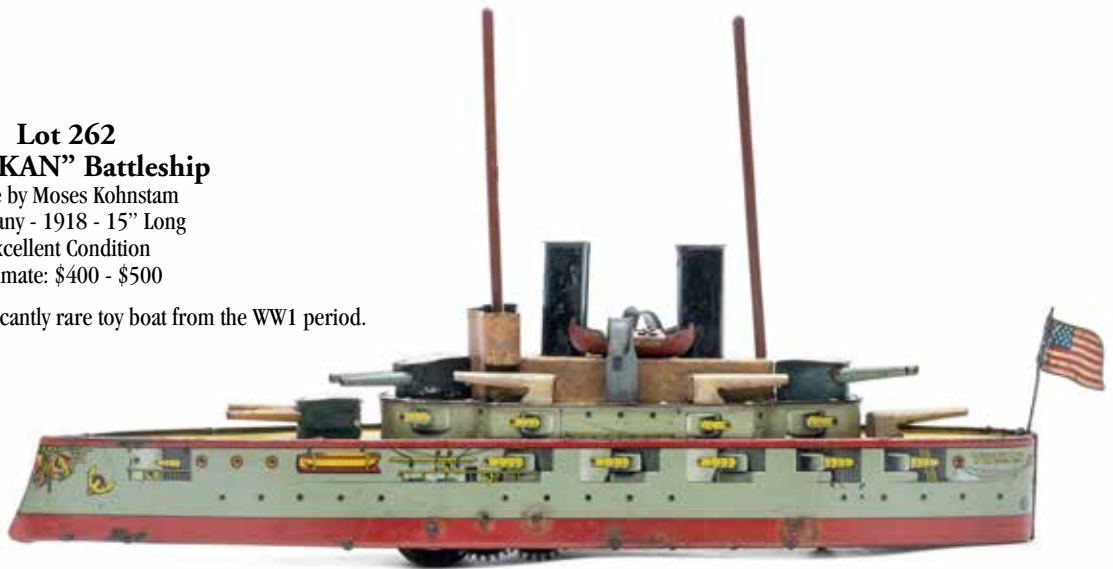
Sky Blue, Red & White
 Made by Arnold Toys
 US Zone Germany - 1940's
 Mint with Box Top
 Estimate: \$250 - \$350



Lot 262
"VULKAN" Battleship

Made by Moses Kohnstam
 Germany - 1918 - 15" Long
 Excellent Condition
 Estimate: \$400 - \$500

This appears to be a significantly rare toy boat from the WW1 period.



Lot 263
Gray, Red & Black Gunboat

Made by J. L. Hess Company
 Germany - 1920's - 9" Long
 Mint - Mechanism Needs Fixing
 Estimate: \$250 - \$350



Lot 264
Gyroscopic Gunboat

Made by J. L. Hess Company
 Germany - 1910's - 12" Long
 Very Good Working Condition
 Estimate: \$250 - \$350

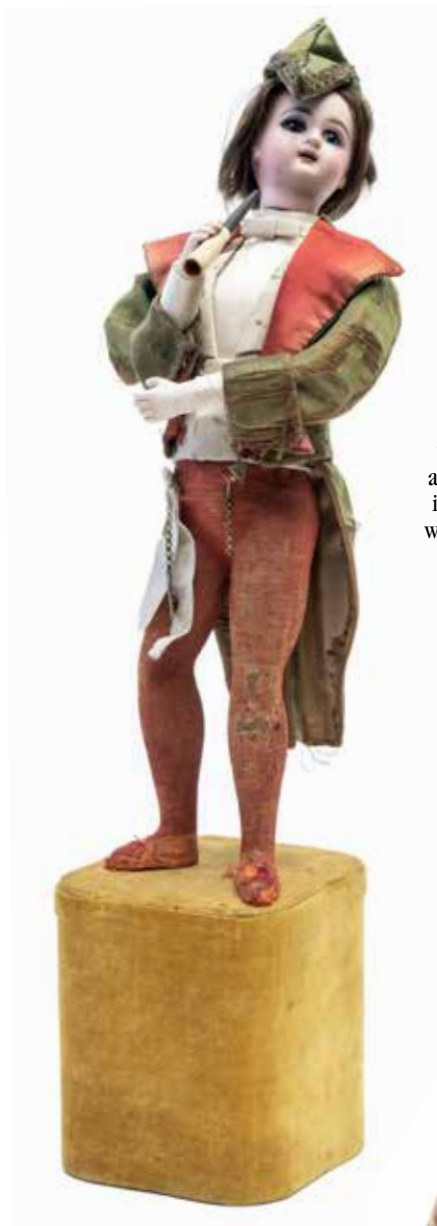


Lot 265
Hand-Painted Speed Boat with Two Figures & Steering Wheel

Possibly made by Ubelecker
 Germany - Circa 1910 - 14" Long
 Excellent Plus Condition
 Estimate: \$1500 - \$1800

Winds up through a gold painted key found on the hood of the boat's bow. This acts to activate both the steering wheel and the propellor. We have not seen another specimen of this toy boat.





Lot 266
Smoking Robin Hood

Made by Leopold Lambert
 French - 1890's - 22 1/2" Tall
 Very Good Condition
 Estimate: \$2000 - \$2500

Lambert grew up in the south of France. He had been a creative child and was very artistically talented. Initially, he was apprenticed with master automata maker Gustav Vichy, but by 1886, he went into business for himself. In this pretty automaton, we find young Robin Hood smoking a hornpipe. He lifts his right arm and turns his head side to side.



Lot 267
Singing Bird in Cage

German - 1950 's - 11 1/2" Tall
 Pristine Plus Condition
 Sings & Chirps Beautifully
 Estimate: \$250 - \$350

Lot 268
The Flower Seller

Made by Leopold Lambert
 French - Late 1890's - 19" Tall
 Excellent Condition with Key
 Estimate: \$1200 - \$1500

This pretty girl beckons you to buy a posey from her, just like Eliza Doolittle in My Fair Lady. She tilts her head downwards and presses the bouquet to her nose. Then, she opens the wicker basket by her feet to reveal that she has plenty of fresh flowers for you to buy.



Lot 269
Girl with Bouquet & Parasol

Probably by Leopold Lambert
 French - 1880's - 19 1/2" Tall
 Excellent (Lacks Upper Parasol)
 Estimate: \$1200 - \$1500

This pretty lass is blossoming with the pulchritude of youth. She wears an attractive costume and she seems distracted by the fragrance of her bouquet. Very nice condition, notwithstanding the loss of her upper parasol, which could be easily replaced.



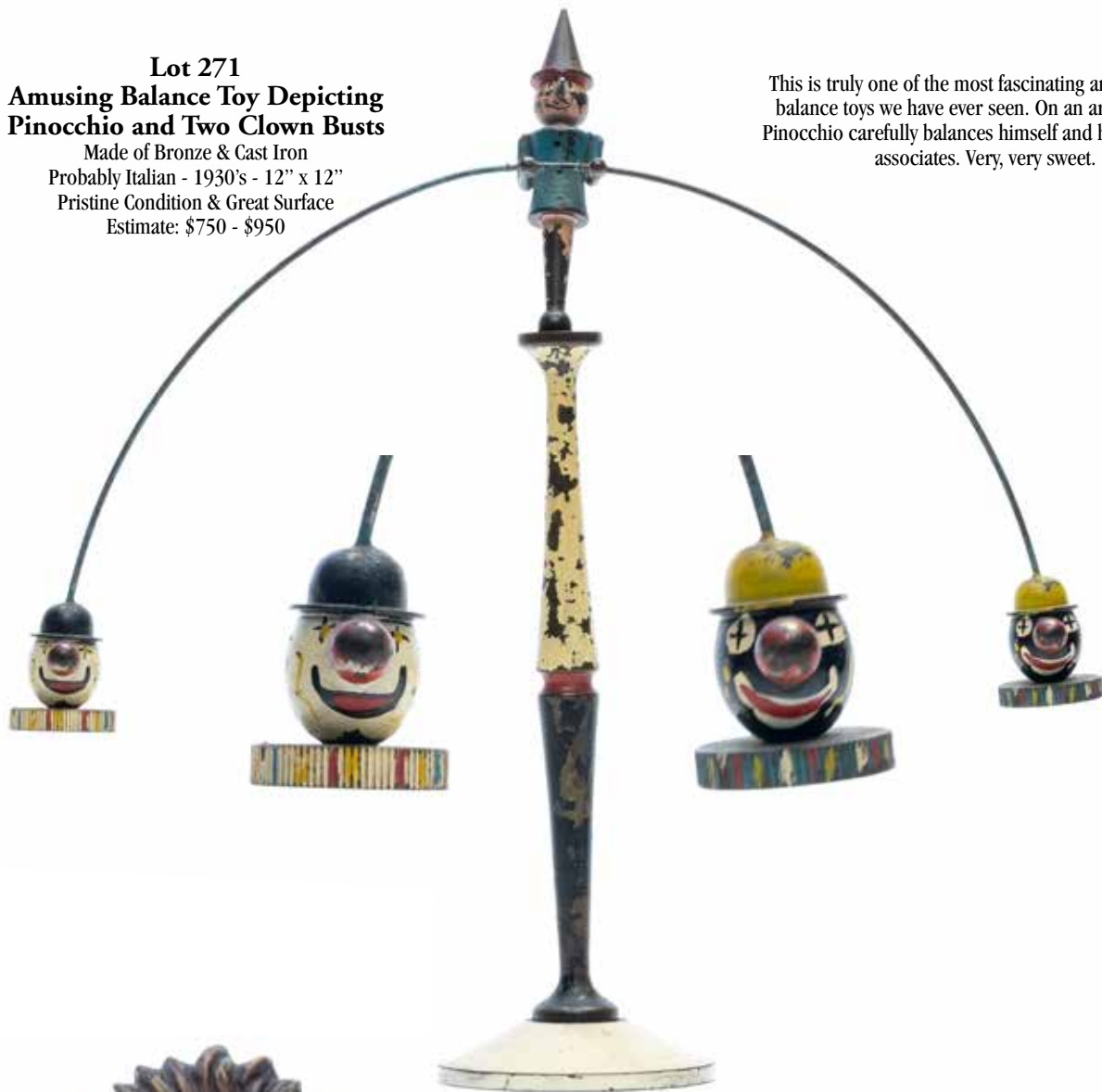
Lot 270
The Flower Conjurer

Made by Leopold Lambert
 French - 1890's - 18 1/2" Tall
 Excellent Condition with Key
 Original Paper Label in Box
 Platform Cloth with Tears
 Estimate: \$1500 - \$2000

This was a more complex and expensive model by Lambert. At first you think she's a conventional "flower selling" peddler, but she's really a magician. The elegant little girl captures your attention by presenting herself with an oval tray. She lifts a single rose in her right hand and tilts her head to smell it's aroma. Then, with her left hand, she lifts the cone-shaped conjurer's prop to reveal a spinning and dancing baby flower sprite. All-in-all, a very appealing spectacle to behold.

Lot 271
Amusing Balance Toy Depicting
Pinocchio and Two Clown Busts

Made of Bronze & Cast Iron
 Probably Italian - 1930's - 12" x 12"
 Pristine Condition & Great Surface
 Estimate: \$750 - \$950



This is truly one of the most fascinating and charming balance toys we have ever seen. On an arching wire, Pinocchio carefully balances himself and his tiny clown associates. Very, very sweet.

Lot 272
Majestic Recumbent Lion

Scarce Blinking Eye Clock
 Made by Bradley & Hubbard
 Connecticut - 1870's - 8 1/2" x 10 1/2"
 Integrity of the Paint is Excellent
 Paper Clock Face & Hands Replaced
 Mechanism will require adjusting.
 Estimate: \$2000 - \$2500



B & H made an extensive series of cast iron novelty blinking eye clocks at the end of the 19th century. The recumbent lion is one of the more rare pieces from this group. The clock is in need of some adjustments to the governor & the mechanism.



Lot 273
Black Foxy Grandpa
 "Papier-mâché Bobble Head
 Germany - 1910's - 8 1/4" Tall
 Excellent Plus Condition
 Estimate: \$300 - \$400



Lot 274
Carved Roosters Platform Toy
 From the Erzgebirge Region
 Germany - 1870's - 7 1/4" Long
 Immaculate Original Condition
 Estimate: \$2000 - \$2500



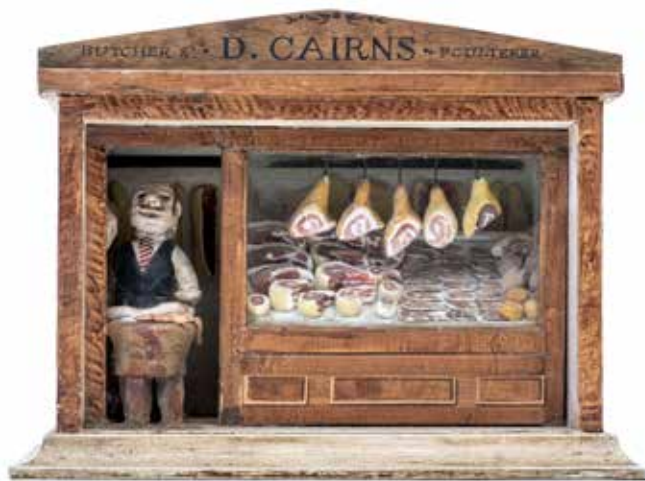
Lot 275
Cigar Smoking Dandy
 Papier-mâché Bobble Head
 Germany - 1910's 7 3/4" Tall
 Excellent Plus Condition
 Estimate: \$400 - \$500

This magnificent early wooden German toy is one of the finest expressions of the Erzgebirge craft that anyone has ever seen. A great chance to acquire a true museum piece.



Lot 276
Unusual Cast Iron Statesman
 Two Part Casting - Torso & Legs
 American - Circa 1880 - 8 1/2" Tall
 Very Fine Condition & Great Patina
 Estimate: \$1500 - \$2000

We have never found a cast iron folk sculpture similar to this elegantly attired politician. It's a fascinating piece of casting made in two parts. The two buttons of his waistcoat are actually the screws that bolt him together.



Lot 277
D. Cairns - Butcher & Poulterer
 English - Circa 1920 - 11" x 8" x 6 1/2"
 Wood, Glass & Papier-mâché Meats
 Outstanding Quality - Beautiful Patina
 Estimate: \$1500 - \$2000

Vernacular depictions of butcher shops in glass enclosed shadow boxes became a popular folk art tradition in Great Britain in the latter decades of the 19th century. This is a later representation (1920's) of that art form. However, unlike the shadow box format, it is a free standing butcher shop more like a doll's house. There's a huge variety of meats and sausages on display.



Lot 278
Carving of a Rotund Man
 Presented on a Modern Base
 New England - 1890 - 5 1/2" Tall
 Outstanding Quality & Great Patina
 Estimate: \$800 - \$1,000

Though small in scale, this jaunty fat man has a surprisingly larger than life presence. He seems to be making an oration as he emphasizes his points with his extended right index finger. He's very charming, whimsical and appealing.



Lot 279
Tin Infantry Soldier
 By Althof-Bergmann
 New York City - 1880's
 Very Good Condition
 Estimate: \$500 - \$700



Lot 280
American Tin Cylinder Bank
 with Horse and Equestrian
 Possibly by Althof-Bergmann
 American - Circa Late 1880's
 Seaman's Savings Bank Collection
 Estimate: \$600 - \$800



Lot 281
Boy Dressed in Red, White & Blue
 Made by Althof- Bergmann
 New York City - 1880's
 Very Good Original Condition
 Estimate: \$600 - \$800



Lot 282
Circus Acrobat & Horse
 Probably by Althof-Bergmann
 New York City - Mid 1880's
 Very Good Original Condition
 (Horse Re-Attached to Base)
 Estimate: \$2000 - \$2500

The silhouettes of early American tin toys are often extremely simple in shape and design. For me, this linear minimalism gives them an aura of hand styled folk art, even though they were produced in a factory setting. This elegant platform toy is a perfect illustration of my point. The acrobat stretches his arms upwards, presumably to keep his balance on the horse. The emphasis on dynamic linear expression as seen in this simple child's toy calls to mind the powerful twisting of wire in Alexander Calder's sculpture.



Lot 283
Rare & Desirable Sulky Bell Toy

Toy Appears to be a Collaboration
 Between Gong Bell & George Brown
 Connecticut - Circa Early 1880's
 Outstanding Original Condition
 Estimate: \$6000 - \$8000

Horse Racing and Sulky Racing became hugely popular in the United States in the last quarter of the nineteenth century. Toy makers immediately realized that they could safely rely upon these new pastimes to source thematic inspiration for their creations. An adoring audience of children happily devoured all that they invented. This beautiful toy represents one of the largest and most significant American tin bell toys we have ever seen. The condition is truly exceptional. The original figure was detached when the toy was consigned. It has been expertly repaired.



Lot 284
Parade Marcher
Pushing Patriotic Hoop

Rare and Important American Tin Bell Toy
 Probably Made by Althof-Bergmann
 New York City - Circa 1876 Centennial
 Provenance: Stephen Lamacchia Collection
 Paul Cole Toy Collection
 Extraordinary State of Preservation
 Estimate: \$5500 - \$7500

A parade marching young man pushes a giant patriotically colored hoop as the chimes sound with great aural effect. Here again, we find a toy with a very simple visual presence, and yet, we also see great strength in this minimalism. The child's imagination can summon up images of parades that he or she has witnessed marching down Main Street. In this way, the toy becomes a touchstone of both fantasy and surrealism. This toy is exceedingly scarce and desirable. There are only two other known specimens of this rare toy. The other specimens are very significantly restored. This one is perfect. When it was first discovered, it was a fresh find that came directly from the attic of a house. A rare opportunity to acquire a very honest and pristine toy.



Lot 285
“SKIP” Floor Train

Made by James Fallows
 Philadelphia - 1880's - 21" L
 Very Fine Original Condition
 Ex - Louis Hertz Collection
 Estimate: \$400 - \$500



Lot 286
“UNCAS” Floor Train

By the Merriam Mfg. Company
 Durham, CT - 1880's - 25 1/2" L
 Ex - Tom Anderson Toy Collection
 Excellent All Original Condition
 Estimate: \$1500 - \$2500

Uncas was a sachem of the Mohegans who made his people the leading Indian tribe in lower Connecticut.



Lot 287
“Orion” Floor Train

By the Merriam Mfg. Company
 Durham, CT - 1880's - 22 1/2" L
 Ex - Ward Kimball Collection
 Excellent Plus Condition
 Estimate: \$1200 - \$1500



Lot 288
Grand Central Omnibus
 Probably Merriam Mfg. Company
 Durham, CT - Early 1880's 9" L
 Pristine Condition
 Estimate: \$2250 - \$2750



Lot 289
"Broadway & Central Park"
 New York City Omnibus
 Made by Merriam Mfg. Company
 Durham, CT - Early 1880's - 13" L
 Ex-Bernard Barenholtz Collection
 Pristine Condition & Great Patina
 Estimate: \$4500 - \$5500

New York's Central Park, the iconic masterpiece of parks designer Frederick Law Olmstead, opened to the public in the late 1870's. From its earliest days, the park became the jewel in the crown of the bustling city. Many city residents used the park for athletic pursuits and leisure activities during spring & summer months. Of particular interest is the "destination signage" for this omnibus toy. It reads "Broadway to Central Park". During the postbellum Reconstruction Era, as the city grew rapidly in both size and population, an entire fleet of such omnibuses were put into use to ferry people from place to place. The NYC subway system did not open until 1903.



Lot 290
"City Passenger Car"
 Deluxe Colorful Tin Trolley
 Made by Hull & Stafford
 NYC - Circa 1870 - 21 1/2" L
 Excellent Condition & Great Surface
 (Horse Skillfully Re-Attached)
 Estimate: \$3500 - \$4500

This toy was discovered by past ATCA President Tony Kovekeski in the 1960's. When it was first found, there was a music box attached to the trolley's undercarriage. Tony speculated that an adoring husband had modified the toy in that period for his spouse. Once again, as with the omnibus vehicles, burgeoning cities throughout the United States were busy developing fleets of trolley cars to transport its residents from place to place. Please note this toy dates just after the Civil War. A genuine museum piece.



Lot 291
The Old Nursemaid
 Scarce Head Variant
 Made by Ives, Blakeslee
 Bridgeport, CT - Circa 1880
 Very Fine Condition
 Estimate: \$3500 - \$4500

Ives made an extensive series of mechanical toys that featured African Americans engaged in various jobs. The "nursemaid" trying to amuse her small ward is one of the rarest. Works well.



Lot 292
The Young Jockey Boy
 Made by ATW or Ives Toys
 Connecticut - Circa 1880
 Ex - Tom Anderson Collection
 Pristine Condition ((Whip Replaced))
 Estimate: \$1500 - \$2000



Lot 293
Horse Drawn Phaeton
 Made by Wilkins Mfg. Company
 Keene, NH - 1895 - 15 1/2" L
 Excellent Plus Condition
 Estimate: \$1500 - \$1800



Lot 294
Mechanical Tricycle
 Round Faced Blonde Boy
 Made by Stevens & Brown
 Connecticut - Circa 1875
 Ex-Louis Hertz Collection
 Near Mint Original Condition
 Estimate: \$2500 - \$3500

This is one of the very finest and brightest examples of this attractive mechanical toy that we have ever seen.



Lot 295
The Walking Zouave
 Made by Martin & Runyon
 New York - 1870's - 10 3/4" T
 Outstanding Mint Condition
 with the Original Cardboard Box
 Estimate: \$2500 - \$3500

Fragile clockwork toys from this period almost never turn up in this wonderful state of preservation. A letter documenting the family history of ownership accompanies this lot.



Lot 296
Paddlewheel Steamboat
 Called the White Fawn
 By the George Brown Company
 Forestville, CT - 1870's - 14" L
 Perfect Restoration by Marc Olimpio
 Estimate: \$2500 - \$3500



Lot 297
Equestrian Platform Toy

Lead, Tin & Iron Wheels
French - Circa 1880's
Very Good Condition
(Tears to Lead)
Estimate: \$250 - \$350

These early French toys are as rare as hen's teeth and as charming as a young man going to prom.



Lot 298
White Horse Platform Toy

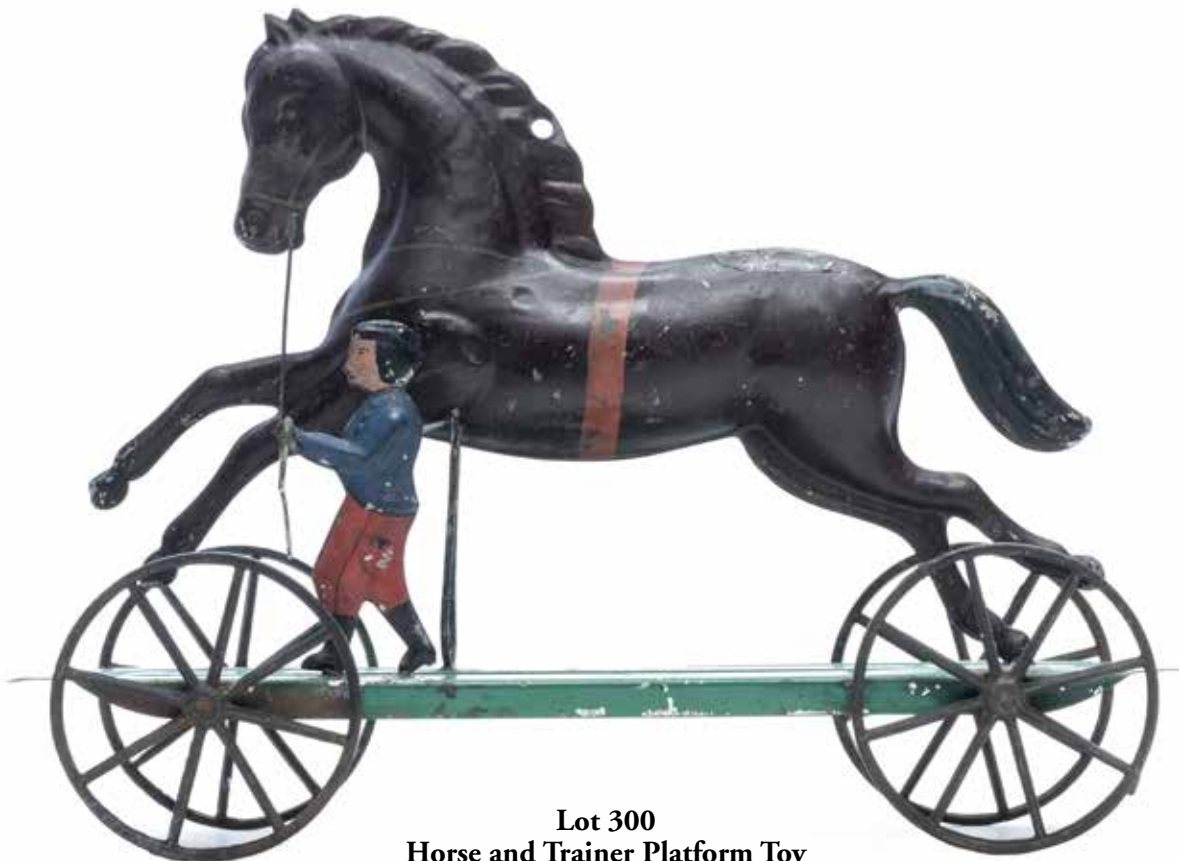
French - Circa Late 1890's
Excellent Condition
Estimate: \$150 - \$200



Lot 299
Equestrian Balance Toy

Tin with Lead Counterweight
French - Circa Late 1890's
Pristine Plus Condition
Estimate: \$350 - \$450

Collectors love these rare, weighted balance toys. Release it from your hand and it will roll away from you with a naturalistic simulated gallop.



Lot 300
Horse and Trainer Platform Toy

Probably by Althof-Bergmann
New York City - Circa 1880's
Pristine Condition & Bright
Estimate: \$3500 - \$4500

This is truly one of the most beautiful platform toys anyone has ever laid eyes upon. The colors are varied and still very vibrant. This is a real showstopper and worthy of inclusion in even the most sophisticated collection.

Lot 301
Galloping Horse and his Trainer
A Rare Articulated Platform Toy

Made by the James Fallows Company
 Philadelphia, PA - Mid 1880's - 9" Long
 Excellent Plus Original Condition
 Estimate: \$3500 - \$4500

During their manufacturing heyday, the Fallows Company produced a varied array of these appealing articulated platform toys. The platforms typically have a scalloped base, but they can also be found with straight edges. This beauty represents one of the rarest examples.



Lot 302
"Horses and Jockeys"
An Impressive Platform Toy

Made by the Althof-Bergmann Company
 New York City - Mid 1880's - 14" Long
 Excellent Plus All Original Condition
 Estimate: \$4000 - \$5000



This magnificent articulated action platform toy is truly enormous in scale. The galloping feature of the large brown horse is effectuated by the wire attached to his rearmost leg. Similarly, the gold-stained horse bobs up and down at the same time. This movement is created by the thin arched tin strap it sits upon. The toy is meant to evince the excitement of attending horse races at the track. Rarely do toys of this scale come on the market in such fine all original condition.



Lot 303
Clown Daredevil Circus Acrobat

Made by the Ives, Blakeslee Company
 Bridgeport, Ct. - Late 1880's - 15 1/2" Tall
 Ex - Louis Hertz Toy Collection
 Ex - Tom Anderson Toy Collection
 Pristine Condition (Costume Fragile)
 Estimate: \$5500 - \$7500

One sunny day many years ago, Louis Hertz regaled Tom Anderson and me with the story about the day he had acquired this rare toy in his youth. Hertz was very sickly as a child in the 1920's and he was schooled at home. Early on, he developed a passionate interest in the toys, banks and trains of the late 19th century. Before the age of 12 or 13, he was advertising in antiques and collectibles trade papers to locate and buy such objects. He received a letter one day from an old woman whose son had been given this toy as a Christmas present in the 1880's. He drove with his dad to visit her and he paid her \$7.50 for the toy in the early 1930's. Tom acquired the toy directly from Louis in the late 1980's. Miraculously, the toy still works quite well.



Lot 304
Giant Indian Head

Carved and Painted
 American - Circa Early 1930's
 28" Tall x 12" Wide x 13" Deep
 Very Good Paint Condition
 Some Damage to Feathers
 Estimate: \$2000 - \$2500

At one time, this head was part of a much larger sculpture that included the entire body. It functioned like an advertising trade sign that stood as a sentinel in front of a trading goods store in the Midwest. According to the consignor, when it was fully assembled, it stood slightly more than 10 feet tall. Apparently, the remains of the body, arms and legs were so badly damaged, that they were discarded some 40 years ago.



Lot 305
Indian Princess Tobacco Figure

Cast Iron Counter Top Trade Sign
 American - Circa 1880's - 25 1/2" Tall
 Good Condition with Great Patina
 Estimate: \$1500 - \$1800

This sensational Native American figure is an incomplete fragment. Normally, this figure is fully three dimensional and viewable in the round. Additionally, she is missing her headdress feathers and a small tobacco sprig that should be in the fingers of her right hand. Notwithstanding these shortcomings, this figure still retains great aesthetic strength and appeal.



Lot 306
Sheet Tin Rooster Vane

Painted Red & White
American - Circa 1900
21 1/2" Tall x 17 1/2" Wide
Outstanding Surface
Estimate: \$950 - \$1250

As a homemade piece, this attractive vernacular weathervane represents the truest form of folk art. It was most probably used as the finial for the henhouse.

Lot 307
Carousel Maker Apprentice's Model

Depicting a Proudly Strutting Rooster
The Archives of the Herschell Company
Tonawanda, NY - Circa Late 1910's
17 1/2" Long x 14" Tall x 7" Wide
Very Good Condition & Patina
Crest a bit worn & front talon lacking
Estimate: \$2250 - \$2750

This magnificently detailed carving was created by an apprentice to the Allan Herschell Company of Tonawanda, New York. We are not certain whether they ever produced a full scale Rooster for sale, nevertheless, this piece was carefully stored in their archives. It is the first time that it is available for sale since it was created more than a century ago



Lot 308
Stylized Horse Weathervane

Painted Ivory White & Black
Wood with Sheet Tin Reins
Upstate New York - Circa 1860
28" Long x 17 3/4" Tall
Truly Extraordinary Surface
Estimate: \$3500 - \$4500

Weathervanes from the antebellum period in American history are scarce and desirable. With its elongated curving back, this stately steed embodies the abstract simplicity of Etruscan sculpture. The arresting silhouette is powerful, yet understated. The vane is exceedingly well preserved, retaining a great original patina.





Lot 309
Stylized Galleon Weathervane

Made of Thick Sheet Copper
 Los Angeles - Circa Late 1920's
 24" Tall x 25" Wide
 Fantastic Oxidized Surface
 Estimate: \$2250 - \$2750

The silhouette of this vane is very dynamic and highly indicative of Art Deco design sensibility. The boat's exaggerated curved structure, along with open fretwork deck fencing and rigging, makes for a very successful voyage on the rooftop.

Lot 310
Medieval Knight-at-Arms Vane

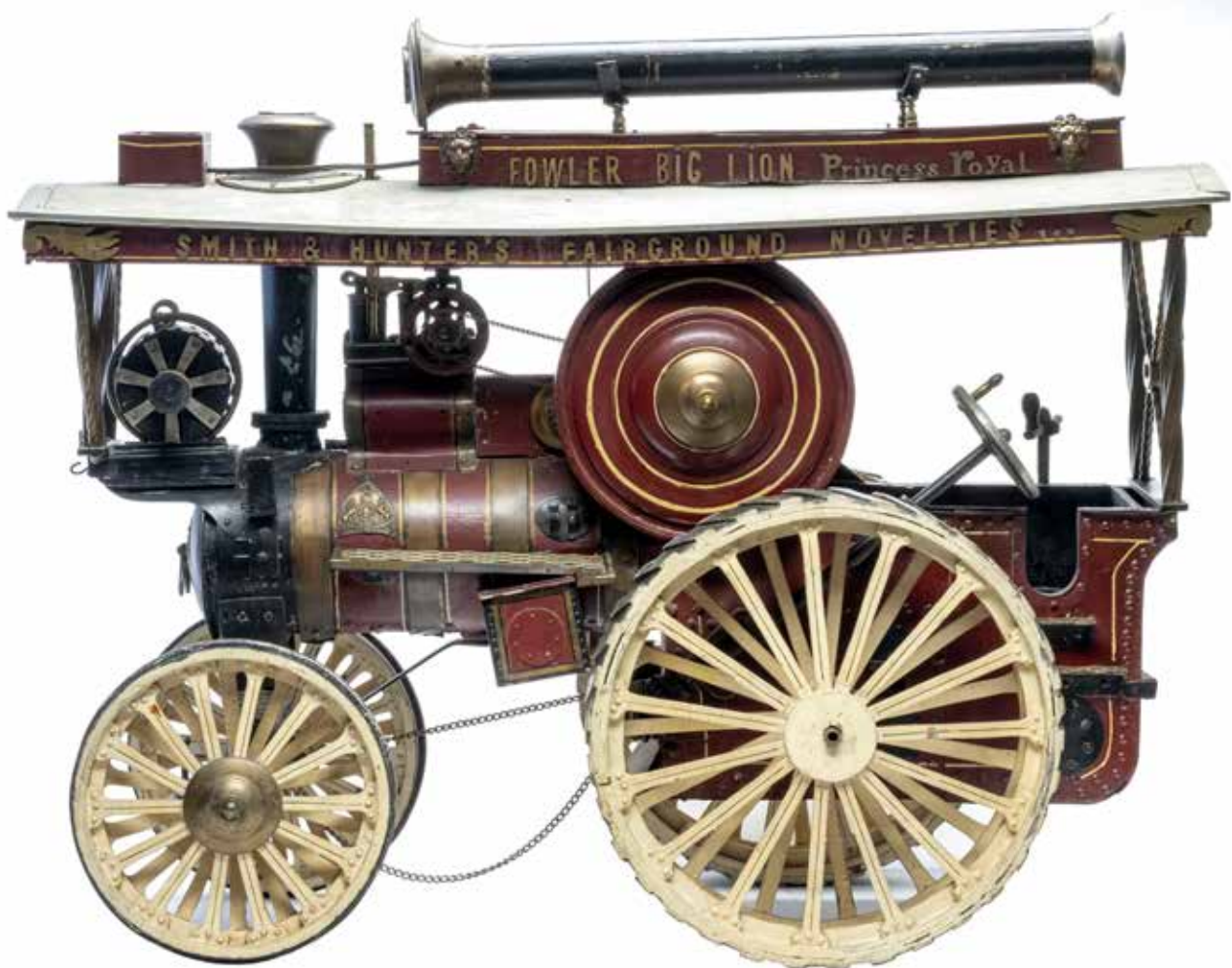
Sheet Iron and Lead Extremities
 American - Circa Late 1910's
 22" Tall x 31" Long
 Excellent Original Surface
 Estimate: \$1250 - \$1750



Lot 311
Colossal Locomotive Weathervane

Painted a Dark Hunter Green
 American - Circa 1920's - 20" x 43"
 Very Good Original Condition
 Estimate: \$1200 - \$1500

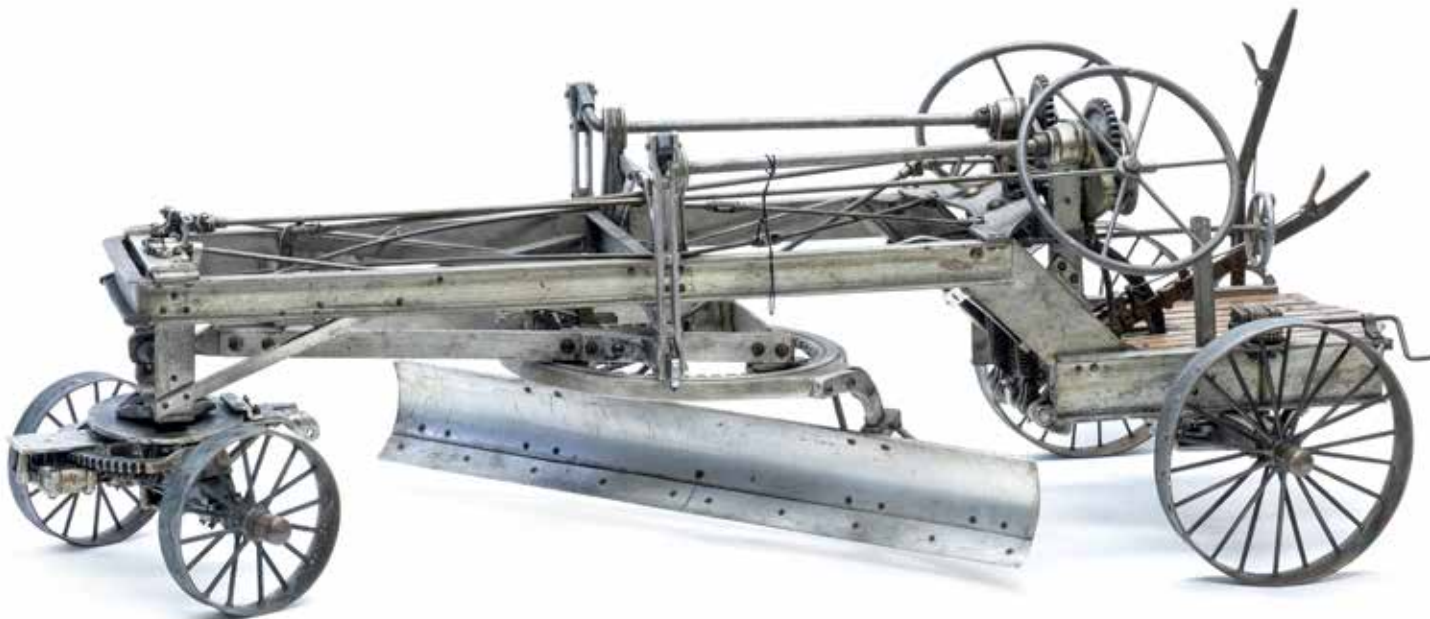
This large sheet steel and iron weathervane makes for a very impressive reception. The primitive abstract fashioning of the cow catcher, guide wheels, wheels and engineer's cabin make an eye appealing profile.



Lot 312
The "Robert Burns"
 An Extraordinary Scale Model
 of the Fowler Traction Engine
 Lincolnshire, England - 1910's
 41" Long x 35" Tall X 19" Deep
 Extremely Well Preserved
 Estimate: \$5000 - \$7000

This wonderful object is definitely one of the most extraordinary scale models any collector has ever seen. Traction engines, which were also widely referred to as road locomotives, were often used to transport carousels and other fairground rides from one location to another. Despite their huge weight and bulk, these massive marvels could be dismantled and reassembled in a remarkably short period of time. The present model is an exact replica of George Green's road locomotive as built by Wm. Fowler's Road & Farm Machinery Company. Accompanying this lot is a one page document bearing two period photographs of this traction engine in full scale. The detail on this model is simply beyond compare.





Lot 313
“The Giant” - Stockland 80 Road Grader

A Truly Exceptional Salesman Sample
 For the Stockland Road Machinery Company
 Minneapolis, Minnesota - Circa Early 1900's
 33" Long x 12 1/4" Tall x 15" Deep
 Formerly in the Alan Katz Collection
 Outstanding State of Preservation
 Estimate: \$9500 - \$12,500

Without any reservation, we can affirm that this model of the “Stockland 80” road grader represents one of the most elaborate and complex salesman samples ever made. It is constructed of brass, cast aluminum, wood and steel. It has an array of working levers and gears, allowing for a full range of movement of the plow blade and other components. This presents you with a rare opportunity to acquire one of the most significant industrial salesman samples in the world.





Lot 314
Chartreuse Toad on Stump

By J. & E. Stevens Company
Cromwell, CT - Late 1890's
Excellent Condition
Estimate: \$950 - \$1250



Lot 315
Frog on Rock Bank
Marketed as "Jug-O- Rum"
Made by Kilgore Mfg. Company
Westerville, Ohio - Circa 1930
MINT with Original Cardboard Box
Estimate: \$3000 - \$4000



Lot 316
Dark Green Toad on Stump

By J. & E. Stevens Company
Cromwell, CT - Late 1890's
Very Fine Original Condition
Estimate: \$750 - \$950



Lot 317
Frog on Lattice Base
Scarce Green, White & Red Base
Made by J. & E. Stevens Company
Cromwell, CT - Circa Late 1870's
Excellent Original Condition
Estimate: \$1200 - \$1500

Lot 318
Frog on Lattice Base
Scarce Red, Blue & White Base
By J. & E. Stevens Company
Cromwell, CT - 1880's
Pristine Original Condition
Estimate: \$1800 - \$2200



Lot 319
The Two Frogs Bank
Made by J. & E. Stevens Company
Cromwell, CT - Circa Late 1880's
Pristine Plus Original Condition
Estimate: \$4500 - \$6500

A mother and her infant frog play in the swirling two-toned grass at the lake's edge. The baby is on his back, exposing the coin rest on his belly for your penny. Press the lever and the baby quickly kicks the coins into his mother's mouth.



Lot 320
Owl Turns Head Bank
 (Rare White Owl Variant)
 Made by J. & E. Stevens Company
 Cromwell, Ct - Circa Mid 1880's
 Pristine and Bright Condition
 Estimate: \$8000 - \$10,000

This elusive white colored owl bank is as rare as hen's teeth. Toy bank enthusiasts see it as a real accomplishment to add such a piece to their collection.



Lot 321
Hen and Chicks Bank
 Made by J. & E. Stevens Company
 Cromwell, CT - Circa Late 1890's
 Excellent Plus Condition and it
 Includes the Original Wood Box
 Estimate: \$7500 - \$9500

The Hen & Chicks Bank is five times more scarce when it is presented with a white hen rather than a brown hen. Another noteworthy difference for the rare white hen variant is the bright lime green grass. The vivid yellow and powder blue flowers are more dramatically indicated in this color combo treatment. Mama hen has tucked two newly hatched chicks under her wings. When the gold lever is pulled back, her head trembles and she simulates crowing. Simultaneously, a third chick emerges from beneath her breast feathers and your penny drops into the bank. This represents an extremely fine example of the bank.



Lot 322

Leap Frog Bank

Made by Shepard Hardware

Buffalo, NY - Circa 1891

Pristine Condition & Bright

Estimate: \$4500 - \$5500

Toy banks that depict children in the act of playing are among collector's favorites.

This colorful gem illustrates the happy joyful moment when one boy piggybacks over his friend's back. The trompe-l'oeil painting skills deployed in the Leap Frog Bank are truly exceptional. Note how the artist simulates graining in the planks of wood that compose the fence by feathering together shades of yellow, light brown, burnt orange and white.

Lot 323

Mason and Hod Carrier

Made by Shepard Hardware

Buffalo, NY - Early 1890's

Pristine Plus Condition & Bright

Estimate: \$7500 - \$9500

On the surface, the imagery portrayed in the Mason Bank seems relatively innocuous, but, to the contrary, something much more racially disturbing is at play. One must examine the Mason Bank through the lens of cultural history. The brick layer (mason) is meant as a bigoted depiction of Italian masculinity. And with his leprechaun physiognomy and flaming orange hair, the hod carrier is presented as an Irishman in a way that is also clearly derogatory and racist. Italians and the Irish were two of the most significant immigrant populations that came to the United States in the last quarter of the nineteenth century. Once again, for the Mason Bank, we find that toy makers often objectified immigrants as the subjects of their distasteful, acerbic humor.





Lot 324
Squirrel and Tree Stump

Designed by Robert Turnbull
 By Mechanical Novelty Works
 New Britain, CT - Circa 1880's
 Provenance - Norman Perry Collection
 Donal Markey Collection
 Stunning Mint Condition & Very Bright
 Estimate: \$15,000 - \$18,000

A squirrel who saves surplus acorns when they are plentiful can count on a steady supply of food all winter long. Similarly, the child who saves his spare pennies can turn them into dollars and use the money to great effect when he needs it. Lessons teaching children the virtues of thrift and economy were ever-present in Victorian society. Place your coin on top of the squirrel's acorn and press the lever. Watch as he leans forward, burying your pennies in the hollowed out tree stump. This represents one of the most sublime specimens of this bank in the world.



Lot 325
William Tell Bank
 By J. & E. Steven Company
 Cromwell, CT - Circa 1897
 Near Mint & Very Bright
 Estimate: \$4500 - \$5500

The folk narrative of William Tell was first described in a Swiss illustrated chronicle from the late 15th century. Tell, who was a renowned marksman with the crossbow, was condemned to death along with his son Robert for refusing to bow when an Austrian prince from the Hapsburg family passed by. The prince offered him redemption in the form of a dare. If he could shoot an apple from his son's head, freedom would be theirs. The eye-popping exceptional quality of this example of the William Tell Bank is almost beyond compare!!!

Lot 326

Bull Dog Bank

Scarce Red Blanket Variant
By J. & E. Stevens Company
Cromwell, CT - Mid 1880's
Pristine Plus Condition
Estimate: \$4500 - \$5500



Typically painted with a blue blanket. Only about 5% of Stevens' production was with a red blanket. This is a hugely superior example of this bank.



Lot 327

Trick Pony Bank

Made by Shepard Hardware
Buffalo, NY - Mid 1890's
Pristine Condition & Bright
Estimate: \$5000 - \$7000

Every child's fascination with the lure of the carousel and it's magical wooden horses comprises the imagery of this pretty bank. Pennies placed in the horse's mouth are deposited when the lever is pulled backwards. The horse leans forward to take a drink of water from his trough and suddenly the coin vanishes. As if a wooden horse needs a drink of water.



Lot 328
Trick Dog Bank - One Part Base

Made by Hubley Mfg. Company
 Lancaster, PA - Circa 1930's
 Near Mint Condition & Bright
 Estimate: \$750 - \$950



Lot 329
Trick Dog Bank - Six Part Base

Made by Shepard Hardware
 Buffalo, NY - Circa 1890's
 Excellent Original Condition
 Estimate: \$1500 - \$2500



Lot 330
The Monkey Bank
 Made by Hubley Mfg. Company
 Lancaster, PA - Circa 1930's
 Near Mint Condition & Bright
 Estimate: \$1500 - \$2000

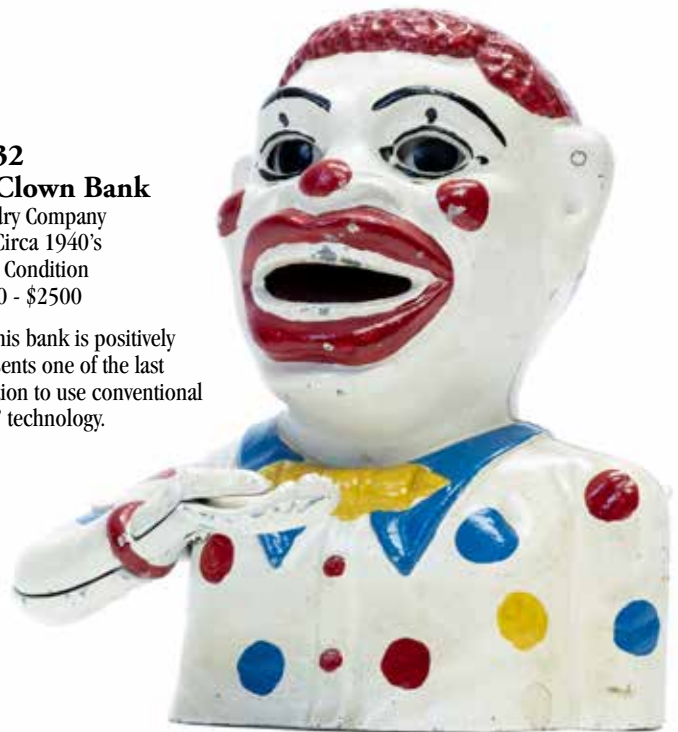




Lot 331
English Clown Bust Bank

Made by Chamberlain & Hill Ltd.
Staffordshire, England - Mid 1920's
Very Fine Condition
Estimate: \$5000 - \$7000

With his vibrant ruffled collar and pompom stocking cap, this odd-looking clown is an exceedingly scarce bank. Press the lever and his right hand raises to drop coins in his open mouth.



Lot 332
The Polka Dot Clown Bank

Made by Mingo Fdry Company
Royersford, PA - Circa 1940's
Absolutely Mint Condition
Estimate: \$2000 - \$2500

WOW - The condition of this bank is positively electrifying!!! This represents one of the last mechanical banks in production to use conventional "coin swallowing" technology.



Lot 333
Humpty Dumpty Bank

Made by Shepard Hardware
Buffalo, NY - Early 1890's
Extraordinary Full Restoration
Estimate: \$1500 - \$2000

The appearance of this Humpty Dumpty Bank is nothing short of astonishing. Schreckinger painted this piece for a collector who wanted to be able to show the visitors to his collection what a toy bank looked like on the day it was bought brand new. His work was amazing.

Lot 334
Professor Pug Frog's Great Bicycle Feat

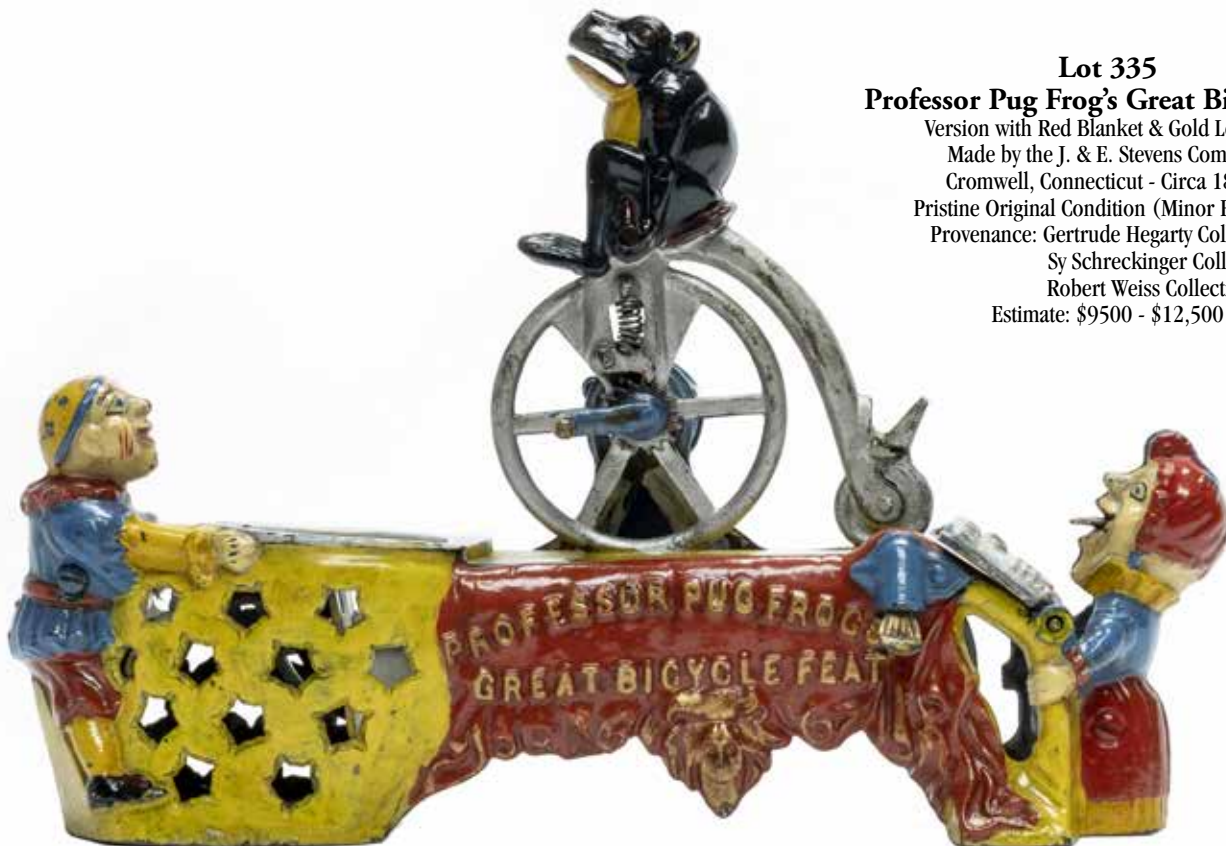
Version with White Blanket & Red Lettering
 Made by the J. & E. Stevens Company
 Cromwell, Connecticut - Circa 1890's
 Excellent All Original Condition
 Estimate: \$5500 - \$7500



The Pug Frog bank (as it is more commonly referred to) is undeniably one of the most colorful and animated toy banks ever brought to market. To set the dynamic action in motion, first wind the spring of the high-wheeled bicycle. Then carefully place your coin on the mudguard of the bicycle's rear wheel. Pushing the lever allows you to witness the bicycle and frog somersault in place, throwing the coin into the big yellow basket held in the boy's outstretched arms. His sister reads from her Mother Goose hymnal and wags her tongue.

Lot 335
Professor Pug Frog's Great Bicycle Feat

Version with Red Blanket & Gold Lettering
 Made by the J. & E. Stevens Company
 Cromwell, Connecticut - Circa 1890's
 Pristine Original Condition (Minor Retouch)
 Provenance: Gertrude Hegarty Collection
 Sy Schreckinger Collection
 Robert Weiss Collection
 Estimate: \$9500 - \$12,500





Lot 336

The Magician Bank

Made by J. & E. Stevens Company

Cromwell, CT - Circa 1890's

Pristine Plus Condition

Estimate: \$8000 - \$10,000

The Magician Bank is one of the most aesthetically pleasing toy banks ever designed. This is attributable to its shape, which is essentially an isosceles triangle formed by the lower right and left edges of the steps and the top of the magician's head. This compositional device acts to draw you into the theatrical scene of mystery that is about to unfold. Place your coin upon the magician's table and press the yellow lever down. The magician lowers his black top hat down to cover your coin. He taps his hat with his wand and ostensibly utters a suitable "abracadabra". When he lifts his hat again, you find that your coin has magically disappeared. This is a truly superior example of this bank, even retaining a fair amount of the flocking on the stairs.



Lot 337
Punch and Judy Bank

Rare Medium Letters Variant
 Made by Shepard Hardware
 Buffalo, NY - Circa 1890's
 Bright & Beautiful Mint Condition
 Estimate: \$7500 - \$9500

The Punch and Judy Bank was a staple of Shepard's Excelsior Line of mechanical toy banks. As a group, they constitute some of the most richly and lavishly hued toy banks ever created. The curtain has risen on the show in progress. Place your admissions penny in Judy's dustpan and push the lever. Punch races towards her and appears to threaten her with his wooden club. Unexplainably, Shepard produced this bank with three different letter sizes in the marquee. The medium sized letters are the rarest.

Lot 338

Independence Hall Tower

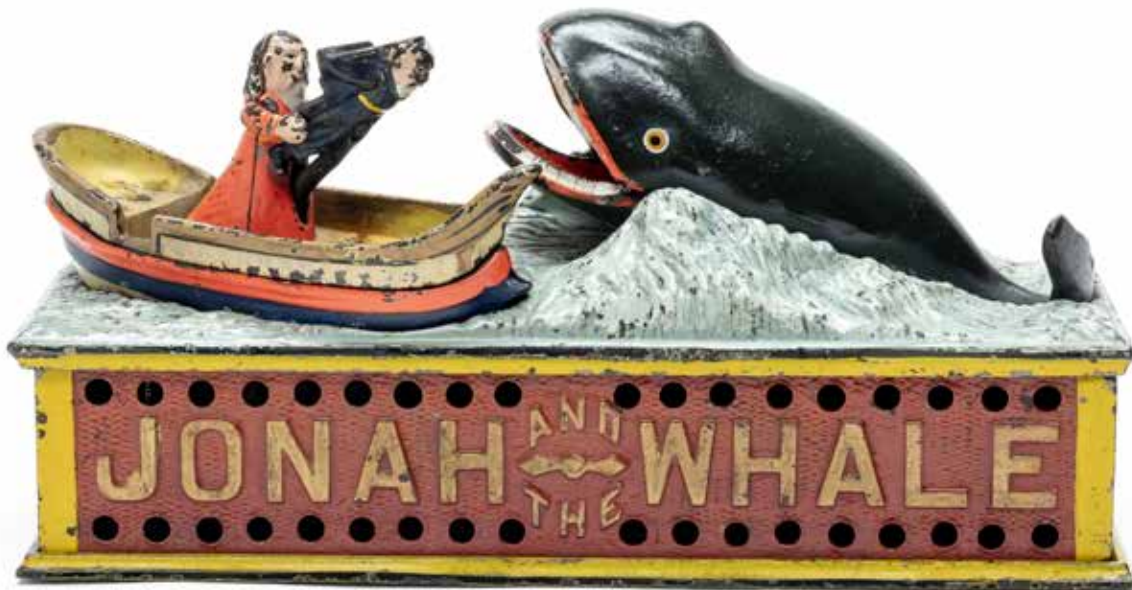
Rare Multi-Colored Specimen
By Enterprise Mfg. Company
Philadelphia, PA - Circa 1876
Near Mint Condition & Bright
Estimate: \$3000 - \$4000



Lot 339

Artillery Bank with Union Officer

Made by the J. & E. Stevens Company
Cromwell, Connecticut - Mid 1890's
Pristine Plus Condition & Bright
Estimate: \$4500 - \$6500



Lot 340

Jonah and the Whale Bank

Made by Shepard Hardware
Buffalo, NY - Mid 1890's
Excellent Plus Condition
Estimate: \$2500 - \$3500

Here we find the instructional biblical narrative as imagined by the bank designers at Shepard Hardware. Jonah is tossed over the boat rail by his crew mates for angering God, who has made the waters rough and un-navigable. This specimen has great gold lettering and a profusion of white highlighting to create the frothy sea foam.

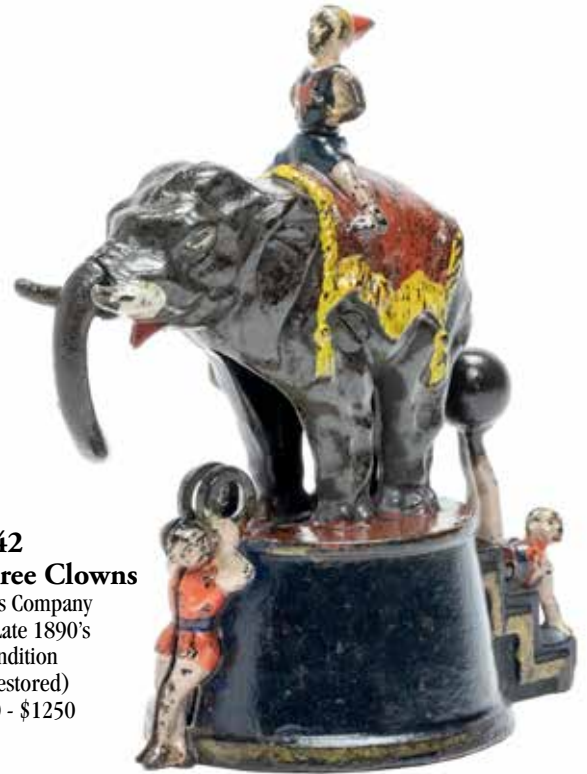
Lot 341
Speaking Dog Bank
with Scarce Blue Dress

By J. & E. Stevens Company
 Cromwell, CT - Late 1890's
 Very Good Condition
 Estimate: \$1200 - \$1500



Lot 342
Elephant & Three Clowns

By J. & E. Stevens Company
 Cromwell, CT - Late 1890's
 Excellent Condition
 (Top Clown Restored)
 Estimate: \$950 - \$1250



Lot 343
Tammany Bank

By J. & E. Stevens Company
 Cromwell, CT - Early 1880's
 Pristine Plus Condition
 Estimate: \$1250 - \$1750



Lot 344
Reclining Chinaman Bank

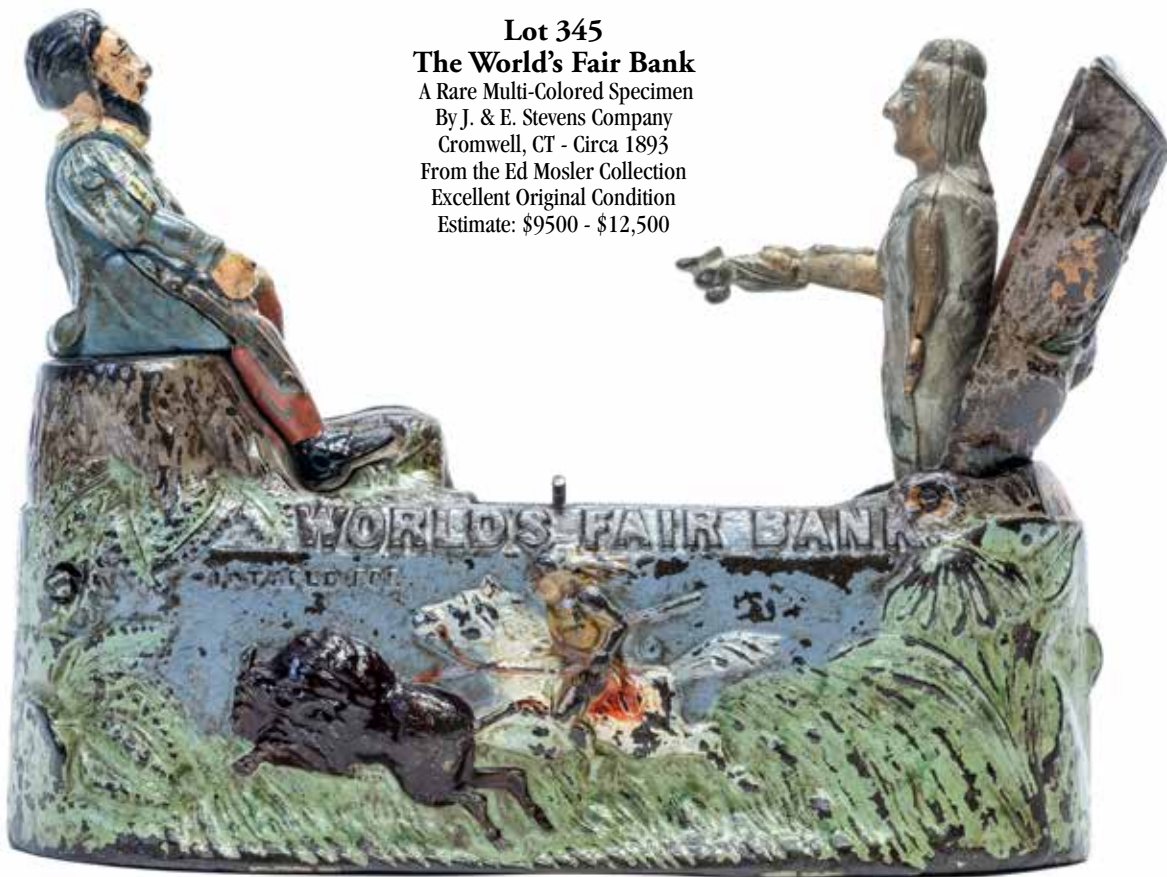
By J. & E. Stevens Company
 Cromwell, CT - Mid 1880's
 Pristine Original Condition
 Estimate: \$7500 - \$9500



A Chinaman invites you to play a hand of poker with him. You had best be careful because this duplicitous card player will pocket your money as he pulls four aces from up his sleeve.



Lot 345
The World's Fair Bank
 A Rare Multi-Colored Specimen
 By J. & E. Stevens Company
 Cromwell, CT - Circa 1893
 From the Ed Mosler Collection
 Excellent Original Condition
 Estimate: \$9500 - \$12,500



The World's Fair Bank was made for souvenir sale at the Columbian Exposition staged in Chicago in 1892 & 1893. Christopher Columbus sits on a tree stump and surveils the landscape in front of him. When the operating button is pushed, a patch of camouflaged foliage suddenly pops up and a Native American Chief magically appears. He is not bellicose in demeanor. To the contrary, he appears very kind and serene. He even offers Columbus a drag on his peace pipe. As an icon from the Gilded Age, the World's Fair Bank is typically found painted gold and silver with a subtle wash of green and copper highlights. Deluxe multi-colored specimens of this bank are exceedingly scarce. In fact, only 5 or 6 specimens are known to exist. It has been cogently suggested that these colorful examples were made for the original trustees of the Chicago World's Fair.





Lot 346

U. S. Bank

Made by J. & E. Stevens
Cromwell, CT - Late 1870's
Pristine Plus Condition
Estimate: \$17,500 - \$22,500

The U. S. Bank can easily rank as the largest of the architectural themed mechanical toy banks. It was made during the Reconstruction Era that followed the American Civil War. It represents a sort of "blown-up" version of Stevens' New Bank, which was also brought to market in the mid 1870's. Pennies can only be deposited when the bank is operated. Press the plunger down and the coin aperture opens while the image of a boy and his dog appear in the round portal windows. This is an exceptional quality example of this bank.





Lot 347
Acrobats Bank
 By J. & E. Stevens Company
 Cromwell, CT - Circa 1880's
 Very Good Original Condition
 Estimate: \$2500 - \$3500



Lot 348
Boy On Trapeze Bar
 By J. Barton Smith
 Pennsylvania - Circa 1891
 Excellent Paintwork
 (Old repair to back of left arm)
 Estimate: \$800 - \$1000



Lot 349
Giant In Tower Bank
 Made by John Harper Ltd.
 England - Circa Late 1890's
 Estimate: \$5500 - \$7500

Excellent Plus Condition An ogre emerges from the top of his crenelated fortress tower. As you deposit your coins, he leans forward to see who is knocking at his door.



Lot 350
Elephant with Locked Howdah
 Secondary Production with One Stump
 Made by Gurney Refrigerator Company
 Fond du Lac, WI - Circa Early 1950's
 MINT - MINT - MINT Condition
 Estimate: \$1500 - \$2000



Lot 351

Girl Skipping Rope

Made J. & E. Stevens Company

Cromwell, CT - Circa Mid 1890's

Provenance: Al Caron Collection

Bill & Wendy Jones

Excellent Plus Condition

Estimate: \$17,500 - \$22,500

Many collectors suggest that the Girl Skipping Rope is the prettiest and most significant mechanical toy bank made at the close of the nineteenth century. Additionally, it represents the most complex example of toy engineering imaginable.

When disassembled, you would find that the bank is composed of about fifty different parts, including a powerful brass spring and several cast iron discs that effectuate the girl's skipping action. This beautiful bank was selected by the Mechanical Bank Collectors of America club as their mascot. This example of the bank features the girl wearing a powder blue dress. It functions exceptionally well and skips eight times.



Lot 352
Arched Top Sailor Bank
 Unknown Manufacturer
 Great Britain - Late 1930's
 Pristine Plus Condition
 Estimate: \$800 - \$1000



Lot 353
The "MAGIE" Bank
 Unknown Manufacturer
 Germany - Circa 1925
 Excellent Plus Condition
 Estimate: \$2500 - \$3250



Lot 354
Arched Top Monkey Bank
 Unknown Manufacturer
 Great Britain - Late 1930's
 Pristine Condition & Bright
 Estimate: \$1200 - \$1500



Lot 355
Mickey Mouse Bank
 Hand Points Upwards
 By Saalheimer & Strauss
 Germany - Circa 1930's
 Excellent Condition
 Estimate: \$5500 - \$7500



Lot 356
Cross Legged Minstrel Bank
 Unknown Manufacturer
 Germany - Circa 1920
 Excellent Plus Condition
 Estimate: \$1400 - \$1800



Lot 357
Black Minstrel Face Bank
 By Saalheimer & Strauss
 Germany - Circa 1920's
 Excellent Condition
 Estimate: \$300 - \$400



Lot 358
Sparkasse Cottage Bank
 with Carved Woman Figure
 Unknown German Manufacturer
 Circa Late 1920's - 4 1/8" Tall
 Pristine Paper Litho & Wood
 Estimate: \$400 - \$600



Lot 359
African Native Bank
 By Saalheimer & Strauss
 Germany - Circa 1920's
 Pristine Original Condition
 Estimate: \$6000 - \$9000

The African Native is one of the rarest from the series of tin coin swallowers by Saalheimer & Strauss. Very few are known to exist.



Lot 360
The Circo Ecuestre
 Extremely Rare Tin Bank
 Made in Spain - 1920's - 4" Tall
 Ex - Frank Kidd Collection
 Pristine Plus Condition
 Estimate: \$5000 - \$7000



Lot 361
British Lion Bank
 By Saalheimer & Strauss
 Germany - Circa 1920's
 Very Good Condition
 Estimate: \$2500 - \$3500



Lot 362
Drumming Pig Bank
 By Schuco Toys
 Germany - 1940's
 Near Mint with Key
 Estimate: \$950 - \$1250



Lot 363
Dressed Teddy Bear Bank
 By Saalheimer & Strauss
 Germany - Circa 1920's
 Very Good Condition
 Estimate: \$2500 - \$3500



Lot 364
1936 Olympics Sparkasse
 A Rare Ten Pfennig Registering Bank
 Germany - Late 1930's - Never Seen
 Pristine Original Condition
 Estimate: \$750 - \$950



Lot 365
Exceptional Folk Art Alms Box
 "Für Die Armen Wiedenkinder"
 Germany - Circa 1920's
 Pristine Condition (Needs Lock)
 Estimate: \$800 - \$1000



Reverse Image of Lot 364
 The flags of Nazi Germans, Netherlands, Great Britain, Belgium, Switzerland and France can be seen flying over the large oval stadium. In the foreground, we find graphics of men participating in various Olympic sports, including shot-put, boxing, soccer, field hockey and rowing. We have NEVER seen this bank before.



Lot 366
Short Sleeved Dinah Bank
 Made by John Harper Ltd.
 England - Circa Mid 1920's
 Pristine Plus Condition
 Estimate: \$950 - \$1250



Lot 367
Stump Speaker Bank
 Made by Shepard Hardware
 Buffalo, NY - Circa 1886
 Pristine Plus & Very Bright
 Estimate: \$6000 - \$8000



Lot 368
Red Shirt Uncle Tom Bank
 Made by Kyser & Rex Company
 Frankford, PA - Mid 1880's
 Pristine Original Condition
 Estimate: \$1500 - \$1800

The imagery for this bank derives from the "carpet bagger" phenomenon that emerged during Reconstruction Era times after the Civil War. In this comical bank, we encounter a satirical representation of just such a dandy done up in an overly colorful & ornate costume. Magnificent Quality.



Lot 369
The Winner Savings Bank

Made by Berger & Medau
 New York, NY - Circa 1895
 Cast Iron, Sheet Tin & Glass
 Provenance: Sy Schreckinger
 Excellent Plus Condition
 Estimate: \$9000 - \$12,000

The Winner Savings Bank captures the enthusiasm of placing a wager on a horse at the track. Six different horses can be seen beneath the circular glass window. Pull the cast iron activating lever out and place your penny carefully in the slot. Pushing the lever back in with suitable force engages a powerful spring which allows the horses to spin rapidly around the track. The horse who stops closest to the finish line can be identified as the winner. The case of the Winner Savings Bank is decorated with horseshoes and riding crops, further emphasizing details of this time honored equestrian sport. This specimen of the bank is of particularly fine condition and works well.



Bank shown here with the tin top removed.



Lot 370
Rare Elephant with 3 Stars Bank
 "A Made in Canada" Specimen
 Canadian - Circa Mid 1930's
 Pristine Original Condition
 Estimate: \$550 - \$750

Lot 371
Large Standing Rabbit Bank
 Made by Lockwood Mfg. Company
 South Norwalk, CT - Circa 1890's
 Excellent Plus Original Condition
 Estimate: \$2250 - \$2750



Lot 372
Pig in High Chair Bank
 By J. & E. Stevens Company
 Cromwell, CT - Circa 1897
 Pristine Plus Condition
 Estimate: \$2250 - \$2750



Lot 373
Buffalo with Twist Tail Bank
 Scarce Burnished Copper Finish
 Unknown Maker - Circa 1900's
 Outstanding Mint Condition
 Estimate: \$2500 - \$3500



Lot 374
Painted Pay Phone Bank
 By J. & E. Stevens Company
 Cromwell, CT - Late 1920's
 Pristine Original Condition
 Estimate: \$1500 - \$1800



Lot 375
Cast Iron Pistol Bank
 By Richard Elliot Company
 Chicago, IL - Circa 1909
 MINT - MINT - MINT
 Estimate: \$1500 - \$1800



Lot 376
Bear Hugs Tree Stump Bank
 A Rare Ebony Black Specimen
 Made by H. L. Judd Mfg. Company
 Wallingford, CT - Circa Mid 1880's
 MINT - Possibly the Finest Known
 Estimate: \$3500 - \$4500



Lot 377
Boy Robbing Bird's Nest

By J. & E. Stevens Company
Cromwell, CT - Late 1890's
Excellent Original Condition
Estimate: \$5000 - \$7000

A boy discovers a nest in the branch of a tree. Curiosity causes him to shimmy up a berry-laden vine and edge his way out on to the branch. As he moves further out, his weight presumably snaps the tree limb and he, along with the nest fall to the ground.



Lot 378
Monkey and Coconut Bank

By J. & E. Stevens Company
Cromwell, CT - Late 1880's
Pristine Original Condition
Estimate: \$3000 - \$4000

Darwin's theory on mankind's origins provides the root inspiration for the imagery portrayed in this bank. This relationship is patently implied by the monkey's opposable thumb, which holds your pennies before the bank is operated.



Lot 379
Boy Scout Camp Bank

By J. & E. Stevens Company
Cromwell, CT - Circa 1916
Excellent Plus Condition
Estimate: \$5000 - \$7000

Lessons in self-reliance are central to the stated mission of the Boy Scouts of America. This type of discipline often involved participation in a wide variety of outdoor activities. Camping provided the perfect situation in which boys could not only grow up, but also commune with nature to develop a humble sense of their place in God's vast landscape.



**Lot 380
Zoo Bank**

Made by Kyser & Rex Company
Frankford, PA - Late 1880's
Excellent Plus Condition
Estimate: \$1500 - \$1800

Place a penny in the slot found in the roof dormer and press the monkey's face. The shutters open. The faces of a lion and a bear appear in the windows.



Lot 381

Uncle Remus Bank

Made by Kyser & Rex Company
Frankford, PA - Circa 1880's
Excellent Original Condition
Estimate: \$6000 - \$8000

Remus has gotten into a neighbors chicken coop and he attempts to make off with a free bird for his dinner. When the constable turns the corner to apprehend him, he quickly snaps the door shut and retreats inside the chicken house. The activating mechanism for this bank is cleverly disguised as the chicken in the front yard.



Lot 382

Organ Grinder and Performing Bear

Made by Kyser & Rex Company
Frankford, PA - Circa 1880's
Pristine Condition & Bright
Estimate: \$6000 - \$8000

At first glance, this bank appears relatively innocuous. However, to the contrary, the imagery actually draws from a very tragic American narrative. Careful examination of the bank points out the real dynamics at play in the Organ Grinder Bank. The man is a former officer of the Confederate States. He stands beside his plantation house. He is a broken man, desperate and dispirited. He has returned from service in the Civil War as an amputee. Peer below the hurdy-gurdy and you will see his peg leg. Maimed as he is, he scrambles to provide for his family. Tragedy has compelled him to give trained bear shows for children in order to eke out a modest income. The socioeconomic impact on the war's participants had lingering effects for decades.



Lot 383

Butting Buffalo Bank

Made by Kyser & Rex Company
Frankford, PA - Circa 1880's
Excellent Plus Condition
Estimate: \$7000 - \$9000

A young boy comes face-to-face with a wild forest animal when a buffalo butts him up the side of a tree stump. This bank is seldom found in such strong, all original condition.

A farmer is seen driving his mule-drawn cart to market. Foolishly, he eats a slice of watermelon, taking his eye off the road in front of him. When the bank is operated, a small boy suddenly emerges from behind the foliage. This has the effect of frightening the mule, who rears backwards, ultimately toppling the cart. The farmer's neglectful behavior has caused a bad accident. This is a beautifully preserved and richly saturated example of the Bad Accident Bank.

Lot 384

Bad Accident Bank

By J. & E. Stevens Company
Cromwell, CT - Circa 1888
Pristine Plus Condition
with the Original Wood Box & Lid
Estimate: \$6000 - \$8000

NOTES

