

The RSL Auction Company



Summer Sizzling Sale - RSL Online Only

Saturday - July 18, 2026

Summer Sizzling Sale - RSL Online Only



1: Tower - Cast Iron Still Bank

USD 150 - 200

John Harper Ltd - English 1895. 9 1/8" Tall x 3 3/4" Square. Clayton Luther Collection.



2: U.S. Air Mail on Base - Cast Iron Still Bank

USD 225 - 300

Dent Hardware Company. Fullerton, PA. 1920's. 6 3/8" Tall x 2 1/2" Wide. Clayton Luther Collection.



3: Skyscraper with Six Turrets - Cast Iron Still Bank

USD 80 - 120

A.C. Williams Company. Ravenna, OH. 1920's. 6 5/8" Tall x 4 1/2" Wide. Clayton Luther Collection.



4: Home Savings Bank - Scarce in Gold/Copper

USD 100 - 150

J & E Stevens Company. Cromwell, CT. 1890's. 6" Tall x 4 1/2" Wide. Clayton Luther Collection.



5: Two Small Buildings Banks - Domed Mosque & Independence Hall

USD 75 - 100

American 1920/1930's. 3 1/2" Tall x 2 3/4" Long. Clayton Luther Collection.



6: One Story House & Small Cupola Banks

USD 100 - 150

J & E Stevens Company. Cromwell, CT. 1880's. 3 1/2" Tall x 2 1/2" Wide. Clayton Luther Collection.



7: Patriotic Medium Cupola - Cast Iron Bank

USD 80 - 120

J & E Stevens Company. Cromwell, CT. 1870's. 4 1/4" Tall x 3 1/4" Wide. Clayton Luther Collection.



8: Lead Woolworth Building Bank

USD 30 - 50

American 1930's. 4" Tall x 1 3/4" Deep. Clayton Luther Collection.

Summer Sizzling Sale - RSL Online Only



9: The Midget - Cast Iron Bank

USD 125 - 175

English 1905. 2 5/8" Tall x 3 3/4" Wide. Clayton Luther Collection.



10: State Bank with Key Lock Door

USD 75 - 100

Kenton Hardware Company. Kenton, OH. 1899, 5 7/8" Tall x 4 5/8" Wide. Clayton Luther Collection.



11: Building with Four Turrets - Cast Iron Bank

USD 100 - 150

Grey Iron Casting Company. Mount Joy, PA. 1895. 5 3/4" Tall x 4" Wide. Clayton Luther Collection.



12: Domed Mosque - Large - Cast Iron Still Bank

USD 100 - 150

Grey Iron Casting Company. Mount Joy, PA. 1910. 5" Tall x 5 1/8" Wide. Clayton Luther Collection.



13: Calumet Mechanical Bank - Tin and Cardboard

USD 60 - 80

Made by Calumet. Chicago, IL. 1920's. 5 5/8" Tall x 2 3/8" Circular. Clayton Luther Collection.



14: Cast Iron Match Holder

USD 100 - 150

Made by Verlarg. European 1900's. 3 3/4" Tall x 2 1/8" Circular. Clayton Luther Collection.



15: Boy on Tricycle - Cast Iron Toy

USD 150 - 200

Ideal Mfg. Company. Pennsylvania 1905. 3 3/8" Tall x 4" Long. Clayton Luther Collection.



16: Deutsche Volksschule Bank with KLT

USD 150 - 200

German 1920's. 6 1/8" Tall x 5 1/4" Wide. Clayton Luther Collection.

Summer Sizzling Sale - RSL Online Only



17: SBCCA Rocking Horse Bank

USD 100 - 150

American 1980's. 5 3/4" Tall x 6 1/8" Wide. Clayton Luther Collection.



18: Andy Gump Thrift - Tin Still Bank

USD 80 - 120

General Thrift Products. Chicago, IL. 1920's. 4 3/4" Tall x 3" Wide. Clayton Luther Collection.



19: Singer Sewing Machine Bank

USD 125 - 175

German 1930's. 5 1/4" Tall x 4 1/2" Wide. Clayton Luther Collection.



20: New York Bank - Brass Version

USD 150 - 200

English 1910. 5 3/4" Tall x 3 5/8" Wide. Clayton Luther Collection.



21: State Bank - Flat Top Multicolor

USD 300 - 400

Kyser and Rex Company. Philadelphia, PA. 1880's. 5 1/2" Tall x 4 1/4" Wide. Clayton Luther Collection.



22: The Zoo - Cast Iron Mechanical Bank

USD 750 - 950

Kyser and Rex Company. Philadelphia, PA. 1890's. 4 1/4" Tall x 4" Wide. Clayton Luther Collection.



23: Independence Hall Bank - Multicolor Example

USD 350 - 450

Enterprise Mfg. Company. Philadelphia 1876. 9 1/2" Tall x 4" Square. Clayton Luther Collection.



24: Flat Iron Bank - Largest Size Very Scarce

USD 400 - 600

Kenton Hardware Company. Kenton, OH. 1915. 8 1/8" Tall x 6" Deep. Clayton Luther Collection.

Summer Sizzling Sale - RSL Online Only



25: Two European Banks - One Lead / One Porcelain

USD 80 - 120

European 1920/30's. House is 3 1/4" Tall x 3 3/4" Wide. Clayton Luther Collection.



26: Four Cast Iron Building Banks

USD 80 - 120

A.C. Williams Company. Ravenna, OH. 1915. Mosques are 4 1/4" Tall x 4 1/8" Wide. Clayton Luther Collection.



27: Log Cabin & Small Mosque - Cast Iron Still Banks

USD 125 - 175

American 1880/1915. Mosque is 3 1/4" Tall x 3 1/8" Wide. Clayton Luther Collection



28: County Bank - Ebony Paint

USD 150 - 200

Chamberlain and Hill. English 1910's. 4 1/4" Tall x 5 1/8" Wide. Clayton Luther Collection.



29: Reid Library - Lake Forest College - Cast Iron Bank

USD 150 - 200

American Circa 1920's. 3 1/4" Tall x 5 1/4" Wide. Clayton Luther Collection.



30: Globe Savings Fund - Cast Iron Mechanical Bank

USD 800 - 1,000

Kyser and Rex Company. Philadelphia 1888. 7 1/8" Tall x 5 3/8" Wide. Clayton Luther Collection.



31: Old South Church - Still Bank - Small Version - Very Rare

USD 1,250 - 1,750

American Circa 1880's. 9 5/8" Tall x 6 1/4" Deep x 4" Wide. Clayton Luther Collection. This is a rare building still bank.



32: Spelter Donkey Bank

USD 30 - 50

German 1930's. 3 7/8" Tall x 3 1/2" Long. Tom Kellogg Collection.

Summer Sizzling Sale - RSL Online Only



33: Teddy Bear - Cast Iron Still Bank

USD 60 - 80

American 1920's. 2 1/2" Tall x 3 3/4" Wide. Tom Kellogg Collection.



34: Elephant - Cast Iron Still Bank - Very Scarce Multicolor

USD 80 - 120

American 1920's. 3" Tall x 4" Long. Tom Kellogg Collection.



35: Three Wise Monkeys - Cast Iron Still Bank

USD 125 - 175

A.C. Williams Company. Ravenna, OH. 1920's. 3 1/4" Tall x 3 1/8" Wide. Tom Kellogg Collection.



36: Porcelain Dressed Dog - Still Bank

USD 60 - 90

Austrian 1920's. 4 1/2" Tall x 2 1/2" Wide. Tom Kellogg Collection.



37: Chalk Cat by Ball - Still Bank

USD 40 - 60

American 1930's. 6 1/2" Tall x 4" Wide. Tom Kellogg Collection.



38: Fala Dog - Cast Iron Still Bank

USD 80 - 120

American 1930's. 3 1/8" Tall x 3 3/8" Wide. Tom Kellogg Collection.



39: Boston Bull Terrier - Later Version - Still Bank

USD 80 - 120

American 1950's. 4 3/8" Tall x 5" Wide. Tom Kellogg Collection.



40: St. Bernard with Pack - Large, Jappaned with Gold Highlights - Still Bank

USD 100 - 150

A.C. Williams Company. Ravenna, OH. 1920's. 5 1/8" Tall x 7 5/8" Long. Tom Kellogg Collection.

Summer Sizzling Sale - RSL Online Only



41: Dog - I Hear a Call - Cast Iron Still Bank - Scarce Version with Baffle

USD 150 - 200

American 1910's. 5 1/8" Tall x 8" Long. Tom Kellogg Collection.



42: Rearing Horse on Base - Cast Iron Still Bank

USD 80 - 120

A.C. Williams Company. Ravenna, OH. 1920's. 7 3/8" Tall x 6 1/2" Wide. Tom Kellogg Collection.



43: Tally Ho Bank - Very Scarce in Black & Gold

USD 80 - 120

English 1910's. 4 1/2" Tall x 4 1/4" Wide. Tom Kellogg Collection.



44: Buster Brown & Tige - Cast Iron Still Bank

USD 80 - 120

A.C Williams Company. Ravenna, OH. 1920's. 5 1/8" Tall x 3" Wide. Tom Kellogg Collection.



45: Mutt & Jeff Still - Cast Iron Still Bank

USD 50 - 75

A.C Williams Company. Ravenna, OH. 1920's. 5 1/8" Tall x 3 3/4" Wide. Tom Kellogg Collection.



46: Boy Scout - Painted - Cast Iron Still Bank

USD 60 - 90

Hublely MFG Company. Lancaster, PA. 1915. 5 3/4" Tall x 2" Wide. Tom Kellogg Collection.



47: Two Indian Chief Bust Banks - Key Lock Trap

USD 100 - 150

Japanese 1930's. 3 1/2" Tall x 2 3/4" Wide. Tom Kellogg Collection.



48: Two Narrow Indian Chief Bust Banks with Key Lock Traps

USD 100 - 150

Japanese 1930's. 4" Tall x 3" Deep. Tom Kellogg Collection.

Summer Sizzling Sale - RSL Online Only



49: Heavy Spelter Indian Chief Bust - Souvenir for Napanoch, NY.

USD 75 - 100

Japanese 1930's. 3 1/2" Tall x 2 5/8" Wide. Tom Kellogg Collection.



50: Boy Scout - Painted - Cast Iron Still Bank

USD 60 - 90

Hubley MFG Company. Lancaster PA. 1915. 5 3/4" Tall x 2" Wide. Tom Kellogg Collection.



51: Give Me a Penny with Twist Pin - Cast Iron Still Bank

USD 150 - 200

Wing MFG Company. American 1915. 6 3/4" Tall x 3" Wide. Tom Kellogg Collection.



52: Mulligan the Cop - Cast Iron Still Bank

USD 80 - 120

A.C. Williams Company. Ravenna, OH. 1915. 5 3/4" Tall x 3 1/4" Wide. Tom Kellogg Collection.



53: Minuteman - Cast Iron Still Bank

USD 150 - 200

Hubley MFG Company. Lancaster, PA. 1920's. 6" Tall x 2 1/2" Wide. Tom Kellogg Collection.



54: Gollywog with Seperate Eyes - Very Scarce - Still Bank

USD 175 - 225

English 1920's. 6" Tall x 3" Wide. Hubert B. Whiting Collection.



55: Santa with Tree - Cast Iron Still Bank

USD 300 - 400

Hubley MFG Company. Lancaster, PA. 1920's. 5 3/4" Tall x 2 1/2" Wide. Tom Kellogg Collection.



56: Mickey Mouse - Still Bank

USD 350 - 450

Made by J. Menil. French - Early 1930's. 8" Tall x 6" Wide. Tom Kellogg Collection.

Summer Sizzling Sale - RSL Online Only



57: Two Small 1876 - Cast Iron Building Banks

USD 60 - 90

H.L. Judd Company. Wallingford, CT. 1876. 2 5/8" Tall x 2 1/4" Wide. Tom Kellogg Collection.



58: Two Large 1876 Banks

USD 80 - 120

H.L. Judd Co. Wallingford, CT. 1876 - 3 1/4" T x 2 3/4" W - Tom Kellogg Collection



59: (2) Two Story Mosque - Cast Iron Building Banks

USD 60 - 90

A.C. Williams Company. Ravenna, OH. 1905. 3 1/4" Tall x 2 3/4" Wide. Tom Kellogg Collection.



60: Smallest & Second Smallest - State Banks

USD 80 - 120

Kenton Hardware Company. Kenton, OH. 1899. Taller is 4 1/8" Tall x 3" Wide.



61: Small Mosque & "Jewel" - Cast Iron Still Banks

USD 100 - 150

American 1910's. Jewel is 4 1/4" Tall x 3 5/8" Wide. Tom Kellogg Collection.



62: Two Small Cupola - Cast Iron Banks

USD 100 - 150

J & E Stevens Company. Cromwell, CT. 1870's. 3 1/4" Tall x 2 1/2" Wide. Tom Kellogg Collection.



63: Home Savings & Roof - Cast Iron Still Banks

USD 100 - 150

American - 1880/90's. Taller is 6" Tall x 4 1/4" Wide. Tom Kellogg Collection.



64: (2) City Bank with Director Room - Cast Iron Buildings

USD 80 - 120

English - Circa 1895. 4 1/8" Tall x 3 1/2" Wide. Tom Kellogg Collection.

Summer Sizzling Sale - RSL Online Only



65: Deposit Bank & State Bank with Straight Letters

USD 80 - 120

Grey Iron Casting Company. Mount Joy, PA. 1905. Taller is 5 1/2" Tall x 4 1/8" Wide. Tom Kellogg Collection.



66: (3) One Story Building Banks

USD 60 - 90

J & E. Stevens Company & A.C. Williams Company. American 1880's/1910's. 3" Tall x 2" Wide. Tom Kellogg Collection.



67: Two & Three Story Mosque - Cast Iron Building Banks

USD 60 - 90

A.C. Williams Company. Ravenna, OH. 1915. 3 1/2" Tall x 2 3/4" Wide. Tom Kellogg Collection.



68: Blackpool Tower & Prince of Wales - Still Banks

USD 100 - 150

English 1910's/1980's. 7 1/2" Tall x 4 3/8" Wide. Tom Kellogg Collection.



69: Banque & Cassie Banks with Rooster Finials

USD 125 - 175

French 1910's. 6 1/2" Tall x 3 1/2" Wide. Tom Kellogg Collection.



70: Three Small Tin Banks

USD 60 - 90

American 1930's/40's. Largest is 3 1/2" Tall x 1 3/4" Circular. Tom Kellogg Collection.



71: Three Midsize Celluloid Dime Banks

USD 60 - 90

American 1920/30's. 2" Circular. Tom Kellogg Collection.



72: Three Celluloid Dime Banks

USD 60 - 90

American - 1930's. 2 1/2" Circular. Tom Kellogg Collection.

Summer Sizzling Sale - RSL Online Only



73: Three Celluloid Dime Banks

USD 60 - 90

American - 1930's. 2 1/2" Circular. Tom Kellogg Collection.



74: Charles L.Hill Insurance Broker Bank

USD 50 - 75

Banthrico Company. Chicago, IL. 1930's. 2 3/4" Tall x 2 1/2" Wide. Tom Kellogg Collection.



75: (2) Boxed Cash Register Banks and a Globe Bank

USD 60 - 90

All by J. Chein & Company. New Jersey 1940/50's. Globe is 4 1/2" Tall x 4" Wide. Tom Kellogg Collection.



76: Two Tin or Cardboard Banks

USD 125 - 175

Penny Toy Hansel & Gretel. German/English. Larger is 3" Tall. Tom Kellogg Collection.



77: Two Tin Building Banks

USD 40 - 60

American 1930's/40's. Lollipop Bank is 4 1/2" Tall x 5 1/8" Wide. Tom Kellogg Collection.



78: Windmill & Beehive - Still Banks

USD 75 - 100

German/American - 1930's. 5" Tall x 3 1/4" Wide. Tom Kellogg Collection.



79: Porcelain Bear & Tin Boat - Still Banks

USD 80 - 120

Austrian/German - 1930's. 2" Tall x 4" Long. Tom Kellogg Collection.



80: Early Liberty Bell Still Bank

USD 100 - 150

J.M Harper Company. Chicago, IL. 1905. 4" Tall x 3 1/4" Circular. Tom Kellogg Collection.

Summer Sizzling Sale - RSL Online Only



81: Plymouth Rock & Alamo Still Banks

USD 100 - 150

Plymouth Rock Advertises The Valley State Bank Belle Plaine, KANS. American - 1921/1950's. 2" Tall x 4" Long. Tom Kellogg Collection.



82: Silver Tin Chest & Cast Iron Pirate Chest - Still Banks

USD 75 - 100

English/American - 1920's. 2" Tall x 3 1/4" Wide. Tom Kellogg Collection.



83: U.S. Mail Box - Cast Iron Still Bank

USD 60 - 90

Hubley MFG Company. Lancaster, PA. 1930's. 4 1/8" Tall x 3 1/2" Wide.



84: Gem Abendroth Bros. Stove - Cast Iron Still Bank

USD 50 - 75

American - 1920's. 4 1/2" Tall x 3" Circular. Tom Kellogg Collection.



85: Baileys Centennial Money Bank

USD 150 - 200

American - 1875. 4 3/8" Tall x 4 3/8" Square. Tom Kellogg Collection.



86: "Shellout" Conch Shell - Cast Iron Still Bank

USD 225 - 275

J & E Stevens Company. Cromwell, CT. 1890's. 3" Tall x 4 3/4" Wide. Tom Kellogg Collection.



87: One Car Garage - Cast Iron Still Bank

USD 40 - 60

A.C. Williams Company. Ravenna, OH. 1920's. 2 1/2" Tall x 2 1/4" Wide. Tom Kellogg Collection.



88: Mosque - Scarce Yellow and Black - Cast Iron Still Bank

USD 100 - 150

A.C. Williams Company. Ravenna, OH. - 1915. 4 1/4" Tall x 4 1/8" Wide. Tom Kellogg Collection.

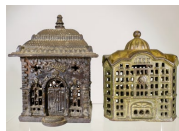
Summer Sizzling Sale - RSL Online Only



89: Skyscraper Bank - Paint Variation

USD 80 - 120

A.C. Williams Company. Ravenna, OH. 1915. 5 1/2" Tall x 2 1/2" Wide. Tom Kellogg Collection.



90: Two Cast Iron Building Banks

USD 60 - 80

American - 1890/1910's. 6" Tall x 4 3/8" Wide. Tom Kellogg Collection.



91: Home Bank with Figure

USD 125 - 175

H.L. Judd. Company. 4 1/8" Tall x 3 1/2" Wide. Tom Kellogg Collection.



92: Aluminum Log Cabin Bank - Scarce

USD 125 - 175

American - 1930's. 5 1/2" Tall x 4" Wide. Tom Kellogg Collection.



93: Porcelain Cupola Bank

USD 100 - 150

Ohio Foundry Company. Cleveland, OH. 1947. 5 1/4" Tall x 4 1/4" Wide. Tom Kellogg Collection.



94: Two Aluminum Banks

USD 40 - 60

American - 1950/1980's. Teepee Bank 5 1/2" Tall x 3" Circular. Tom Kellogg Collection.



95: Two Small Buildings Banks

USD 80 - 120

American - 1880/90's. 3" Tall x 2 1/8" Wide. Tom Kellogg Collection.



96: (3) Deposit - Cast Iron Building Banks

USD 100 - 150

Grey Iron Casting Company. Mount Joy, PA. - 1899. 4 1/8" Tall x 3" Wide. Tom Kellogg Collection.

Summer Sizzling Sale - RSL Online Only



97: (2) State Banks & (1) Deposit Bank - Unusual Copper Finish

USD 125 - 175

Grey Iron / Kenton Hardware. American - 1899. 4 1/8" Tall x 3" Wide. Tom Kellogg Collection.



98: (30) Presidential Bust Banks - Washington, FDR & Eisenhower

USD 50 - 75

American 1930's to 1950's. 5 1/2" Tall x 3 1/2" Wide. Tom Kellogg Collection.



99: Lead Beehive & Silvered Tin Cylinder - Still Banks

USD 30 - 50

American - 1930's. 3" Tall x 3 1/8" Wide. Tom Kellogg Collection.



100: Brass Caisse & Porcelain Cottage - Still Banks

USD 100 - 150

European - 1910/1920's. Caisse is 5" Tall x 3 1/2" Wide. Tom Kellogg Collection.



101: Two Story Ceramic House - Still Bank

USD 100 - 150

Austrian - 1910's. 4" Tall x 4" Wide. Tom Kellogg Collection.



102: Presto - Cast Iron Building Bank

USD 50 - 75

American - 1915. 4 1/8" Tall x 3 1/2" Wide. Tom Kellogg Collection.



103: Bungalow aka Cottage - Cast Iron Building Bank

USD 150 - 200

Grey Iron Casting Company. Mount Joy, PA. 1925. 3 5/8" Tall x 3 1/4" Wide. Tom Kellogg Collection.



104: State Bank - Straight Letters with Red Finial

USD 75 - 100

Grey Iron Casting Company. Mount Joy, PA. - 1905. 5 1/2" Tall x 4" Wide. Tom Kellogg Collection.

Summer Sizzling Sale - RSL Online Only



105: State Bank with Red Roof - Scarce

USD 150 - 200

Grey Iron Casting Company. Mount Joy, PA. - 1905. 4 1/4" Tall x 3 1/8" Wide. Tom Kellogg Collection.



106: Bank with Red Crown and Finial

USD 125 - 175

Grey Iron Casting Company. Columbia, PA. - 1900's. 5 1/2" Tall x 4" Wide. Tom Kellogg Collection.



107: Hall's Excelsior - Mechanical Bank - Light and Blue Version

USD 75 - 100

J & E Stevens Company. Cromwell, CT. - 1870's. 5 1/2" Tall x 4" Wide. Tom Kellogg Collection.



108: Late Version Large Cupola Bank

USD 125 - 175

Ohio Foundry Company. Cleveland, OH. - 1960's. 5 1/4" Tall x 4 1/4" Wide. Tom Kellogg Collection.



109: Medium Cupola - Cast Iron Bank

USD 60 - 90

J & E Stevens Company. Cromwell, CT. - 1870's. 4 1/4" Tall x 3 1/4" Wide. Tom Kellogg Collection.



110: Medium Cupola - Cast Iron Bank - Beige, Brown, Red and Green

USD 100 - 150

J & E Stevens Company. Cromwell, CT. - 1870's. 4 1/4" Tall x 3 1/4" Wide. Tom Kellogg Collection.



111: Fidelity Trust Vault - Scarce Small Version - Cast Iron Bank

USD 225 - 275

J. Barton Smith. Philadelphia, PA. - 1890's. 5 3/4" Tall x 4 3/4" Deep x 4" Wide. Tom Kellogg Collection.



112: Fidelity Trust Vault - Large Size - Cast Iron Bank

USD 250 - 325

J. Barton Smith. Philadelphia, PA. - 1890's. 6 1/2" Tall x 6" Wide. Tom Kellogg Collection.

Summer Sizzling Sale - RSL Online Only



113: Postal Savings Mailbox Bank

USD 250 - 325

Nicol and Company. Chicago, IL. - 1900's. 6 5/8" Tall x 3 5/8" Wide. Tom Kellogg Collection.



114: The Apple - Scarce - Cast Iron Still Bank

USD 750 - 950

Marked P.B. and Co. Philadelphia - 1890's. 5 1/4" Tall x 5 1/8" Wide. Tom Kellogg Collection.



115: Daisy Coffee Grinder & Cute Stove Toys

USD 80 - 120

American - 1900. 4 1/4" Tall x 3 3/4" Wide. Tom Kellogg Collection.



116: He Gave - We Give - Alms Bank

USD 100 - 150

American - 1930's. 7" Tall x 4" Wide. Tom Kellogg Collection.



117: New England Church - Cast Iron Building Bank

USD 225 - 275

American - 1930's. 7 1/2" Tall x 7 3/8" Deep x 4 1/4" Wide. Tom Kellogg Collection.



118: Rare Zig Zag Cross - Cast Iron Bank

USD 350 - 450

Made by David C. Cook. Colorado - 1920's. 8 5/8" Tall x 5" Wide. Tom Kellogg Collection. David C. Cook is a 150 year old company that sells religious books and artifacts, located in Colorado.



119: Pavillion - Cast Iron Building Bank

USD 225 - 275

Kyser and Rex Company. Philadelphia, PA. - 1880's. 3 1/8" Tall x 3 1/8" Wide. Tom Kellogg Collection.



120: Lilliput - Cast Iron Mechanical Bank - Patriotic Colors

USD 350 - 450

J & E Stevens Company. Cromwell, CT. - 1870's. 4 3/4" Tall x 3" Wide. Tom Kellogg Collection.

Summer Sizzling Sale - RSL Online Only



121: Home Savings Bank - Multicolor Example

USD 250 - 325

J & E Stevens Company. Cromwell, CT. - 1890's. 6" Tall x 4 1/2" Wide. Tom Kellogg Collection.



122: City Bank - Narrow Version

USD 550 - 750

J & E Stevens Company. Cromwell, CT. - 1873. 5 1/8" Tall x 4 1/8" Wide. Tom Kellogg Collection.



123: Home Bank - Deep Version

USD 700 - 900

J & E Stevens Company. Cromwell, CT. - 1870's. 5 1/4" Tall x 4 1/4" Wide x 4 1/4" Deep. Tom Kellogg Collection.



124: Small Pony Cart - Cast Iron Toy

USD 80 - 120

Wilkins Hardware Company. Keene, NH. - 1905. 4" Tall x 8" Long. The Olshefski Collection.



125: Sulky with Integral Driver - Cast Iron Toy

USD 75 - 100

Kenton Hardware Company. Kenton, OH. 1910's. 3 1/4" Tall x 6" Long. The Olshefski Collection.



126: Sulky with Driver and Nickel Plated Horse - Cast Iron Toy

USD 100 - 150

Kenton Hardware Company. Kenton, OH. 1910's. 4" Tall x 7" Long. The Olshefski Collection.



127: Silver Rhino Cart - Scarce - Cast Iron Toy

USD 175 - 225

Kenton Hardware Company. Kenton, OH. - 1910's. 4 1/4" Tall x 8" Long. The Olshefski Collection.



128: Silver Lion Cart - Cast Iron Toy

USD 175 - 225

Kenton Hardware Company. Kenton, OH. - 1910's. 4 1/4" Tall x 8" Long. The Olshefski Collection.

Summer Sizzling Sale - RSL Online Only



129: Two Welker and Crosby Animal Figures

USD 100 - 150

American 1880's. 5 1/4" Tall x 5" Long. The Olshefski Collection.



130: Hansom Cab - Cast Iron Toy

USD 400 - 500

Pratt and Letchworth Company, Buffalo, NY. - 1890's. 8" Tall x 13" Long. The Olshefski Collection.



131: Gig with Gentlemen - Cast Iron Toy

USD 250 - 325

Hubley Mfg. Company. Lancaster, PA. - 1906. 6" Long x 12 1/2" Long. The Olshefski Collection.



132: Oxford Back to Back Trap - Rare - Cast Iron Toy

USD 900 - 1,200

Kenton Hardware Company. Kenton, OH. - 1910. 6 1/2" Tall x 14" Long. The Olshefski Collection.



133: Conestoga Type Farm Wagon - Cast Iron Toy

USD 250 - 350

Hubley Mfg. Company. Lancaster, PA. - 1910's. 5" Tall x 15" Long. The Olshefski Collection.



134: Single Horse Dray Wagon - Cast Iron Toy

USD 250 - 350

Hubley Mfg. Company. Lancaster, PA. - 1910's. 5" Tall x 13" Long. The Olshefski Collection.



135: Conestoga Wagon with Original Cloth Top - Cast Iron Toy

USD 350 - 450

Hubley Mfg. Company. Lancaster, PA. - 1910's. 7 1/2" Tall x 14 1/2" Long. The Olshefski Collection.



136: Two Horse Mower - Scarce - Cast Iron Toy

USD 1,250 - 1,750

Wilkins Hardware Company. Keene, NH. - 1905. 5 1/4" Tall x 10" Long. The Olshefski Collection.

Summer Sizzling Sale - RSL Online Only



137: Two Horse Coal Wagon - Cast Iron Toy

USD 250 - 325

Dent Hardware Company. Fullerton, PA. - 1910's. 7 3/4" Tall x 19" Long. The Olshefski Collection.



138: Fire Chief with Original Box Bottom - Cast Iron Toy

USD 550 - 750

Wilkins Hardware Company. Keene, NH. - 1898. 6" Tall x 12" Long. The Olshefski Collection.



139: Two Horse Fire Pumper - Cast Iron Toy

USD 225 - 275

Hubley Mfg. Company. Lancaster, PA. - 1915. 7" Tall x 16 1/2" Long. The Olshefski Collection.



140: Three Horse Fire Patrol - Cast Iron Toy

USD 550 - 750

Hubley Mfg. Company. Lancaster, PA. - 1915. 7 3/4" Tall x 17 1/2" Long. The Olshefski Collection.



141: Fire Chief Wagon - Scarce - Cast Iron Horse Drawn Toy

USD 450 - 550

Kenton Hardware Company. Kenton, OH. - 1915. 5 1/2" Tall x 14" Long. The Olshefski Collection.



142: Fire Patrol Wagon - Cast Iron Horse Drawn Toy

USD 800 - 1,000

Pratt and Letchworth Company. Buffalo, NY. - 1890's. 8 1/4" Tall x 16 1/4" Long. The Olshefski Collection.



143: Oversized Fire Pumper - Scarce - Cast Iron Horse Drawn Toy

USD 950 - 1,250

Kenton Hardware Company. Kenton, OH. - 1915. 8 1/2" Tall x 26" Long. The Olshefski Collection.



144: Two Horse Ladder Wagon - Cast Iron Toy

USD 500 - 700

Carpenter Toy Company. Port Chester, NY. - 1880's. 7 1/2" Tall x 27" Long. The Olshefski Collection.

Summer Sizzling Sale - RSL Online Only



145: Four Horse Oversized Dray Wagon - Very Rare - Cast Iron Toy

USD 1,250 - 1,750

Kenton Hardware Company. Kenton, OH. - 1905. 9" Tall x 30" Long. The Olshefski Collection.



146: The Tally Ho Stagecoach - Rare - Cast Iron Horse Drawn Toy

USD 2,500 - 3,500

Carpenter Toy Company. Port Chester, NY. - 1880's. 10" Tall x 26" Long. The Olshefski Collection.



147: Crown Bank - Large

USD 250 - 350

J & E Stevens Company. Cromwell, CT. - 1880's. 5" Tall x 4 1/4" Wide.



148: Eagle - Cast Iron Bank

USD 550 - 750

Unknown Maker. American - Circa 1880's. 9 1/2" Tall x 5 1/4" Wide x 4" Deep.



149: Two Cast Iron Building Banks

USD 50 - 75

American -1890/1920's. 5 1/2" Tall x 2 1/2" Square.



150: (2) Dome - Cast Iron Still Banks

USD 50 - 75

A.C. Williams Company. Ravenna, OH. - 1915. 4 1/2" Tall x 4" Wide.



151: Two Still Banks

USD 50 - 75

American 1920/1930's. Barrel is 4 1/2"T x 3"W.



152: Cast Iron Pig Bank

USD 100 - 150

Hubley Mfg. Co. - Lancaster, PA. 1930 - 3"T x 5"W

Summer Sizzling Sale - RSL Online Only



153: Two Cast Iron Cannon Toys

USD 75 - 100

American 1930's - Larger is 4"T x 9"L



154: Big Bang Cannon - Cast Iron and Tin

USD 60 - 90

American 1930's - 8"T x 24"L



155: Hook and Ladder Toy - Aluminum

USD 60 - 90

Hubley Mfg. Co. - Lancaster, PA. 1950's - 6 1/2"T x 16"L



156: Arcade International Harvester Truck

USD 60 - 90

Arcade Mfg. Co. - Freeport, IL. 1920's - 4 1/4"T x 10 1/2"L



157: Contractors Dump Truck

USD 175 - 225

Kenton Hardware - Kenton, OH. 1930 - 4"T x 11"L



158: Cast Iron Car Carrier

USD 300 - 400

A.C. Williams Co. - Ravenna, OH. 1928 - 4"T x 12 1/4"L



159: Two Cast Iron Toys

USD 150 - 200

A.C. Williams Co. / Kilgore Mfg. - Ohio 1920/1930 - Ladder Truck is 2"T x 5 1/4"L



160: Donkey Drawn Wagon

USD 50 - 75

American 1915 - 3 1/4"T x 7"L

Summer Sizzling Sale - RSL Online Only



161: Lincoln Tunnel Windup Toy

USD 150 - 200

Louis Marx and Co. - New York 1930's - 3"T x 24"L x 3 1/2"D



162: Cast Iron Fire Toy

USD 40 - 60

Hubley Mfg. Co. - American 1930's - 3 1/2"T x 6 1/2" L



162A: Cast Iron Hook & Ladder

USD 50 - 75

A.C. Williams Co. - Ravenna, OH. 1920 - 3 1/4"T 7 1/4" L



163: Early Runabout Wooden Model

USD 125 - 175

American 1905 - 4"T x 7"L



164: Early Cast Iron Runabout

USD 225 - 275

Probably by Ideal Mfg. Co. - Pennsylvania 1910 - 5 1/2"T x 5 1/2"L



165: General Digger - Early Version with Nickel Wheels

USD 250 - 325

Hubley Mfg. Co. - Lancaster, PA. 1925 - 5 1/2"T x 10"L



166: Bell Telephone Truck - Largest Size

USD 450 - 550

Hubley Mfg. Co. - Lancaster, PA. 1930's - 6"T x 13 1/2"L



167: See Saw Bell Toy - Scarce

USD 650 - 850

Gong Bell Mfg. Co. - Connecticut 1890's - 4 3/4"T x 7 1/2"L

Summer Sizzling Sale - RSL Online Only



168: U.S. Gas Pump

USD 150 - 200

American 1930's - 10"T x 3"Circular



169: Donald Duck Hand Car Windup Toy

USD 300 - 400

Lionel Corporation - New York 1930's - 6 1/2"T x 10 1/2"L



170: Ducky Ducky Windup Tin Toy

USD 80 - 120

German 1930's - 4"T x 10"L



171: Singing Dog Bookends - Cast Iron

USD 100 - 150

American 1930's - 4 1/2"T x 5"W



172: Three Dogs in Basket Bookends

USD 125 - 175

Hubley Mfg. Co. - Lancaster, PA. 1930's - 5"T x 5 1/4"W



173: Stagecoach Doorstop

USD 80 - 120

American 1930's - 6 1/4"T x 8 1/4"W



174: Happy Hooligan and Gloomy Gus Composition Figures

USD 100 - 150

American 1920's - 11"T x 4"W



175: The Caddie Doorstop - Scarce

USD 700 - 900

Hubley Mfg. Co. - Lancaster, PA. 1920's - 8"T x 7"W

Summer Sizzling Sale - RSL Online Only



176: Porky Pig Bank

Hubley Mfg. Co. - Lancaster, PA. 1930's - 6"T x 2 1/2"W

USD 125 - 175



177: Two Metal Alloy Dog Banks

American 1930's - 5"T x 4 1/2"D

USD 40 - 60



178: Three Cast Iron Building Banks

American 1880 to 1920's - 3 1/4"T x 2 3/4"W

USD 60 - 90



179: Three Alloy Made Still Banks

American 1940/50's - Largest is 6"T x 5"W

USD 40 - 60



180: Two Cast Iron Building Banks

A.C. Williams Co. - Ravenna, OH. 1920 - 4 3/4"T x 4"W

USD 60 - 90



181: Two Skyscraper Banks

A.C. Williams Co. - Ravenna, OH. 1920 - 5 1/2"T x 2 1/2"W

USD 50 - 75



182: Three Still Banks

American 1930/40's - Tallest is 3 1/2"T x 2 1/2"Circular

USD 50 - 75



183: Two Building Banks

Grey Iron / Rehberger - American 1900/1930 - 2 3/4"T x 3 1/8"W

USD 100 - 150

Summer Sizzling Sale - RSL Online Only



184: Bethel Library Bank

USD 80 - 120

American 1930 - 2 3/4"T x 5 1/4"W



185: Large Cupola Bank

USD 80 - 120

J & E Stevens Co. - Cromwell, CT. 1880 - 5 1/2"T x 4 1/4"W



186: Patriotic Roof Bank

USD 125 - 175

J & E Stevens Co. - Cromwell, CT. 1887 - 5 3/4"T x 3 3/4"W



187: Doctrinament Silver Tower Bank - Scarce

USD 150 - 200

European 1920 - 6"T x 2 1/4"Circular



188: Sparekassen Brass Bank

USD 100 - 150

Made by Hansen and Soe-Jensen - Danish 1920's - 4 5/8"T x 3 3/4"W



189: Two Modern Cast Iron Banks

USD 25 - 35

American 1959/1976 - Harleysville is 2 1/2"T x 5 1/8"D



190: Palace Bank with Advertising for Gusky's Department Store - Very Scarce

USD 1,250 - 1,750

Ives, Blakeslee Company - Bridgeport, CT. 1890 - 7 1/2"T x 8 1/8"W



191: Magic Bank - Green

USD 950 - 1,250

J & E Stevens Co. - Cromwell, CT. 1880 - 5 1/4"T x 5 1/4"D

Summer Sizzling Sale - RSL Online Only



192: Home Bank with Dormers - Very Scarce

USD 1,250 - 1,750

J & E Stevens Co. - Cromwell, CT. 1880 - 5 1/4"T x 4 1/4"W x 4 1/4"D



193: Mule Entering Barn - Green Barn Version

USD 800 - 1,000

J & E Stevens Co. - Cromwell, CT. 1880's - 5"T x 8 1/2"W



194: Elephant with Howdah Bank

USD 250 - 350

Hubley Mfg. Co. - Lancaster, PA. 1930 - 5 1/2"T x 9"W



195: Bulldog Bank - Blue Blanket

USD 550 - 750

J & E Stevens Co. - Cromwell, CT. 1880's - 7 1/2"T x 7 1/2"W



196: I Always did Spise a Mule - Jockey Version

USD 450 - 650

J & E Stevens Co. - Cromwell, CT. 1880 - 8 1/4"T x 10 1/4"L



197: William Tell Cast Iron Bank

USD 450 - 550

J & E Stevens Co. - Cromwell, CT. 1896 - 6 1/2"T x 10 1/2"L



198: Trick Dog Bank - Six Part Base

USD 500 - 700

Shepard Hardware Company - Buffalo, NY. 1888 - 6 3/8"T x 8 5/8"W



199: Speaking Dog with Red Dress

USD 550 - 750

Shepard Hardware Company - Buffalo, NY. 1885 - 8"T x 8"W

Summer Sizzling Sale - RSL Online Only



200: The Hoopla Mechanical Bank - Scarce

USD 700 - 900

John Harper Ltd. - English 1895 - 7 1/4"T x 8 1/4"W



201: Jolly Ed Bank - Scarce

USD 300 - 400

Made by Charles Reynolds - Virginia 2000 - 7 1/2"T x 6"W



202: Tammany Bank - Black Coat Version

USD 400 - 500

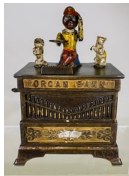
J & E Stevens Co. - Cromwell, CT. 1875 - 6 1/2"T x 4 1/2"D



203: Uncle Tom Bank - Green Coat with Lapels and Star

USD 300 - 400

Kyser and Rex Company - Philadelphia 1890 - 5 1/2"T x 4"W



204: Organ Bank Cat and Dog

USD 300 - 400

Kyser and Rex Company - Philadelphia 1885 - 7 1/2"T x 5 1/4"W



205: Patronise the Blindman Cast Iron Mechanical Bank - Scarce

USD 3,500 - 4,500

J & E Stevens Co. - Cromwell, CT. 1890 - 5 1/2"T x 6 3/4"L



206: Picture Gallery Bank - Rare

USD 5,000 - 7,000

Shepard Hardware Company - Buffalo, NY. 1888 - 8 1/4"T x 8"W



207: Spelter Hansel and Gretel Bank

USD 225 - 275

German 1920 - 2 5/8"T x 2 3/4"W

Summer Sizzling Sale - RSL Online Only



208: Baptist Home Alms Bank - Aluminum and Wood

USD 300 - 400

American 1930's - 5 1/4"T x 9"W x 6"D



209: First Lesson Savings Bank - Paper Litho on Wood

USD 225 - 275

American 1890 - 4 3/4"Cubed



210: Two Ceramic Banks

USD 40 - 60

Mexican/European 1930's - Camel is 5"T x 5 1/2"W



211: Two Helmeted Ceramic Bust Banks

USD 80 - 120

Austrian 1920's - 6"T x 4 1/2"D



212: Two Ceramic Banks

USD 75 - 100

European 1920/30's - Policeman is 7 1/2"T x 4"W



213: Mr. and Mrs. Victory Banks

USD 60 - 90

Japanese 1940's - 4 3/4"T x 3"W



214: Two Ceramic Banks

USD 50 - 75

German / German 1930/40's - Sailor is 5 5/8"T x 5 1/2"W



215: Four Dexterity Puzzles

USD 125 - 175

English 1930's to 1950's - 5"T x 4"W

Summer Sizzling Sale - RSL Online Only



216: Three Dexterity Puzzles

USD 75 - 100

Made by R. Journet - London 1940/50's - 4"T x 5"W



217: Four Dexterity Puzzles

USD 125 - 175

Made by R. Journet - London 1930 to 1950's - 4"T x 5"W



218: Bonny Lass ABC Puzzle Blocks

USD 125 - 175

R. Bliss Company - Pawtucket, RI. 1920's - Larger Box is 5"T x 5"W



219: Jackie Acrobats Toy - In Box

USD 225 - 275

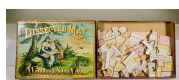
Made by National Toy Mfg. Co. - Chicago, IL. 1930's - Box is 5 5/8"T x 9 1/2"W



220: Picture Puzzle Cubes

USD 125 - 175

German 1900 - Wood Box is 6 1/4"T x 8"W



221: Dissected Map of the United States

USD 100 - 150

McLoughlin Bros. Company - New York City 1887 - Box is 6 5/8"T x 9"W



222: Birth Bank / Boy Atop Pigpen Bank

USD 80 - 120

European 1900/1920 - Birth Bank is 6 5/8"T x 4 3/4"W



223: Two Clock Banks

USD 60 - 90

American 1910's - 3 1/2"T x 2 3/4"W

Summer Sizzling Sale - RSL Online Only



224: Two Flat Iron Banks - Second Largest and Second Smallest

USD 200 - 250

Kenton Hardware - Kenton, OH. 1915 - 5 1/4" and 5 3/4"T



225: Small Colonial Building / One Story House Banks

USD 50 - 75

A.C. Williams Co. - Ravenna, OH. 1920's - 3 1/4"T x 2 5/8"W



226: Two Small Colonial Houses / Large Colonial House Banks

USD 60 - 90

A.C. Williams Co. - Ravenna, OH. 1920's - Large is 4 1/4"T x 3 3/4"W



227: English Town Hall Cast Iron Bank

USD 225 - 275

John Harper Ltd. - English 1910 - 3 1/4"T x 3 1/2"W



228: Large and Small Camel Banks

USD 150 - 200

A.C. William Co. - Ravenna, OH. 1920 - Larger is 7 1/8"T



229: Sheep and Bear Cast Iron Banks

USD 80 - 120

American 1920's - Bear is 5 1/4"T



230: Sheep and Bear Banks - Sheep is Brass

USD 60 - 90

American 1920's - 5 1/4"T



231: Rearing Horse on Platform

USD 60 - 90

A.C. Williams Co. - Ravenna, OH. 1920's - 7 1/4"T

Summer Sizzling Sale - RSL Online Only



232: Beauty/Rearing Horse Banks

USD 75 - 100

A.C. Williams Co. - Ravenna, OH. 1920's - 4 1/8"T



233: Three Workhorse Bank

USD 60 - 90

A.C. Williams Co. - Ravenna, OH. 1920's - 4 1/8"T



234: Two Horse on Tub Banks

USD 100 - 150

A.C. Williams Co. - Ravenna, OH. 1920's - 5 1/4"T



235: Two Small Workhorse Banks / My Pet Bank - Red Workhorse is Scarce

USD 150 - 200

American 1920 - My Pet is 4 1/8"T



236: Foxy Grandpa / Buster Brown and Tige Banks

USD 80 - 120

American 1920 - Foxy is 5"T



237: Three Small Black Boy Banks

USD 80 - 120

A.C. Williams Co. - Ravenna, OH. 1920's - 3 1/4"T x 2 1/2"W



238: Middy Bank / Statue Liberty - Medium

USD 100 - 150

American 1890/1915 - Statue is 6 3/8"T



239: Teddy Bear Bank / Tiny Lion Bank

USD 100 - 150

American 1920 - Bear is 2 1/2"T x 3 3/4"L

Summer Sizzling Sale - RSL Online Only



240: My Pet/ Horse on Wheels Bank

USD 150 - 200

Arcade/A.C. Williams Co. - American 1920's - 5" T x 5" L



241: Three Dial Radio/ Time is Money Clock Bank

USD 80 - 120

American 1920/30s - 2 3/4" T x 4 1/2" L (Radio)



242: Two Scotty Dog Banks

USD 100 - 150

American 1930's - Larger is 5" Tall



243: Novelty Bank - Yellow & Red

USD 700 - 900

J & E Stevens Co. - Cromwell, CT. 1870's - 6 12/" T x 4 3/4" W



244: Elephant with Howdah Bank

USD 225 - 300

Hubley MFG Co. Lancaster, PA. 1930 - 5 1/4" T x 9" L



245: Chandlers Savings Banks

USD 225 - 275

National Brass Works - Cleveland, OH. 1905 - 5" T x 4" W



246: Auto with Four Passengers

USD 175 - 225

A.C. Williams Co. Ravenna, OH. 1915 - 3 1/2" T x 6 1/2" L



247: Blue Stake Truck

USD 75 - 100

A.C. Williams Co. Ravenna, OH. 1925 - 3" T x 7" L

Summer Sizzling Sale - RSL Online Only



248: International Harvester Fantasy Coal Truck - Made from Original Parts

USD 125 - 175

American 1920's - Assembled 1980's



249: Louisville Cadet Cast Iron Paperweight

USD 40 - 60

American 1930's - 5 3/4" T x 2 1/2" W



250: Three Bottle Openers

USD 60 - 90

John Wright Company - Pennsylvania 1950's - 4 1/8" T



251: Paperweight/ Bottle Openers

USD 60 - 90

American 1930's/40's - Tallest is 3 1/2"



252: Die on Base Paperweight - Scarce Cast Iron

USD 100 - 150

American 1930 - 2 1/2" Tall x 3" Square



253: Eastern Malleable Iron Co. Advertising Paperweight Golf Ball Image

USD 100 - 150

American 1930 - 2 3/8" T x 2 1/8" Square



254: Three Tin Book Banks

USD 100 - 150

English 1930's - 5 5/8" T x 3 3/4" W



255: Six Tin Book Banks

USD 80 - 120

By Kirckoff - Newark, NJ. 1930's - 3 7/8" T x 2 7/8" W

Summer Sizzling Sale - RSL Online Only



256: Three Tin Banks

USD 80 - 120

European/American 1930's - Barrel is 3 3/4"T x 3 1/2"W



257: Two Larger Tin Still Banks - Postal Bank/Big Bertha Bomb

USD 40 - 60

European 1920's - Taller is 6"T x 3 1/2"W



258: Four Assorted Tin Banks

USD 125 - 175

English/American 1920/30's - National Bank is 3"T x 3 1/4"W



259: Three Tin/Cardboard Banks

USD 50 - 75

American / German 1920/40's - 3"T x 2 1/2"Circular



260: Two Cash Register Recording Banks

USD 60 - 90

American 1910/1930's - Thrift Bank is 6"T x 5 1/4"D



261: Two Early Birth Banks

USD 80 - 120

English 1890's - 6 3/4"T x 5"W



262: Three Tin Drum Shaped Banks

USD 75 - 100

American/German 1890 to 1950 - 2 3/4"T x 3"Circular



263: Two European Tin Banks

USD 75 - 100

1900's / 1930's - Safe is 4 5/8"T x 3 1/2"W x 3 1/2"D

Summer Sizzling Sale - RSL Online Only



264: Three Register Banks

USD 40 - 60

American 1930/40's - 3 1/8"T x 2"W x 2"D



265: Two Silver Plated Banks

USD 125 - 175

European 1920 - Vase is 3 1/2"T x 4 1/4"W



266: Two Ceramic Banks

USD 30 - 50

European 1920 - Dog is 4 1/2"T x 2 7/8"W



267: Odd Fellows Cast Iron Door Knocker

USD 60 - 90

American 1895 - 5 5/8"T x 3 3/4"W



268: Two Silver on Tin Tankard Banks

USD 75 - 100

European 1890/1900 - 3"T x 3 1/8"W



269: Two Silver on Tin Still Banks

USD 125 - 175

Barrel is by W.M.F. - Austrian 1900/1910 - 4"T x 4 1/8"W



270: Two Silver Plated Tankard Banks

USD 125 - 175

European 1890/1900 - 4"T x 3 1/2"W



271: Two European Lead Banks

USD 40 - 60

German 1910 - Girl is 5"T x 3"W

Summer Sizzling Sale - RSL Online Only



272: Two Wooden Banks

USD 40 - 60

European 1930's - 6 1/8"T x 2 3/4"W



273: Two Wedgwood Type Banks

USD 75 - 100

German 1920 - Teapot is 4"T x 5 1/4"W



274: Two Wooden/Tin Teapot Banks

USD 50 - 70

European 1920's - Larger is 4"T x 5 1/4"W



275: Two Early Ceramic Banks

USD 80 - 120

American / English 1880's - English Birth Bank is 4 1/2"T



276: Comical Dog Still Banks

USD 40 - 60

Japanese 1930's - 4 5/8"T x 2 3/4"W



277: Two Ceramic Cottage Banks - One Early Staffordshire

USD 75 - 125

English / Japanese 1880/1935 - Thatched Roof Cottage is 4 5/8"T x 4 1/2"W



278: Two Ceramic Banks

USD 70 - 90

American 1910 - Frog is 3"T x 4"W



279: Ceramic Bank / Ceramic Flower Vase

USD 60 - 80

Austrian 1920 - 5"T x 2 1/4"W

Summer Sizzling Sale - RSL Online Only



280: Three Ceramic Bird Themed Banks

USD 80 - 120

European 1900 to 1930 - Tallest is 4"



281: Peaches on the Vine Ceramic Bank

USD 175 - 225

European 1920 - 10 5/8"T x 6 1/4"W x 3 1/2"D



282: Pears on the Vine Ceramic Bank

USD 175 - 225

European 1920 - 10 3/8"T x 5 1/4"W x 3 1/2"D



283: Three Tiny Clay Banks

USD 40 - 60

Mexican 1930's - Cat on Jug is 3"T x 2 1/2"W



284: Tin and Ceramic Banks

USD 20 - 30

American/European 1940's - 3"T x 3"Circular



285: Building and Shell Banks

USD 60 - 90

American 1940/50's - Building is 2 1/4"T x 4 1/4"D



286: Tin and Aluminum Banks - St. Olav Bus/The Gay Philosopher

USD 60 - 90

European 1930's - Man is 7 3/4"T x 5 7/8"W



287: Pinocchio and Bavarian Woman Banks

USD 50 - 75

American/German 1930's - Woman is 4 1/4"T x 3 1/2"Circular

Summer Sizzling Sale - RSL Online Only



288: Two Shoe Banks / Ornate Box Bank - Silvered or Gilt Lead

USD 80 - 120

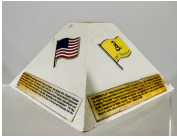
German 1920/30's - Box is 2 1/4"T x 3 7/8"W



289: Rural Mailbox Bank

USD 25 - 35

Made by Logan Specialty Mfg. Co. - Chicago, IL. 1950 - Box is 7 1/4"T x 8"W



290: Bicentennial Still Bank - For the 1976 SBCCA Convention

USD 25 - 35

American 1976 - 3 5/8"T x 6"Square



291: State Bank - Largest Version

USD 100 - 150

Kenton Hardware - Kenton, OH. 1899 - 8 1/4"T x 6 3/4"W



292: Seven Ceramic Building Banks

USD 80 - 120

European 1910 to 1990 - Tallest is 5"T x 3 3/4"W



293: Seven Ceramic Building Banks

USD 80 - 120

Most European 1910 to 1970 - Largest is 4"T x 4 1/8"W



294: Seven Ceramic Building Banks

USD 80 - 120

European 1910 to 1980 - Largest is 5"T x 4 1/4"W



295: Corn, Tomato, Apple, and Peach Banks

USD 80 - 120

European 1930/40's - Corn is 9"L x 2 1/4"W

Summer Sizzling Sale - RSL Online Only



296: Five Assorted Ceramic Banks

USD 50 - 75

European 1920 to 1970 - Tallest is 5 1/2"T x 3 1/2"W



297: Six Assorted Still Banks

USD 40 - 60

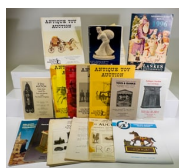
1930's to 1980's - Telephone is 6 5/8"T x 2 3/4"W



298: Six Books about Disney or Comic Windup Toys

USD 60 - 90

American - Various sizes



299: Assorted Bank Auction Catalogs - 16 Soft Bound

USD 40 - 60

American - Various sizes



300: Five Books - Majolica/Gaming, etc.

USD 40 - 60

Various sizes



301: Scottie Doorstop

USD 125 - 175

American 1930 - 7 3/4"T x 10 1/4"L



302: Horse Doorstop

USD 80 - 120

Hubley Mfg. Co. - Lancaster, PA. 1930 - 9 3/4"T x 11 1/4"W



303: Three Geese Doorstop

USD 150 - 200

Hubley Mfg. Co. - Lancaster, PA. 1930 - 8"T x 7 1/2"W

Summer Sizzling Sale - RSL Online Only



304: Airedale Terrier Bookend
American 1930 - 5"T x 5 5/8"W

USD 60 - 80



305: Airedale Terrier Doorstop
American 1930 - 6 3/4"T x 7 3/4"W

USD 125 - 175



306: German Shepherd Door Stop
American 1930 - 7 5/8"T x 9"L

USD 100 - 150



307: Seated Dog Doorstop
American 1930 - 8"T x 6 3/8"W

USD 125 - 175



308: Cast Iron Lizard - Scarce
American 1920 - 1 1/2"T x 7"L

USD 125 - 175



309: Anne Hathaway Cottage Doorstop - Scarce
American 1930 - 6 3/8"T x 8 1/4"W

USD 225 - 300



310: Edgar Allan Poe House - Scarce
Made by Bradley and Hubbard - Connecticut 1920 - 6"T x 7 5/8"W

USD 300 - 400



311: Windmill Doorstop - Scarce
American 1930 - 11 3/4"T x 9 1/8"W

USD 450 - 550

Summer Sizzling Sale - RSL Online Only



312: Young Girl with Handbag Doorstop

USD 100 - 150

Hubley Mfg. Co. - American 1930's - 7 5/8"T x 4 5/8"W



313: Cat Scratch Fever Doorstop - Very Scarce

USD 250 - 350

Made by CJO - American 1930 - 8 5/8"T x 4 1/4"W



314: Dutch Girl Doorstop

USD 200 - 275

Made by LittCo. Products - American 1930's - 12 1/4"T x 8 3/8"W



315: Gnome with Lantern and Keys Doorstop

USD 125 - 175

Made by Hubley Mfg. Co. - Lancaster, PA. 1930 - 9 7/8"T x 5 3/8"W



316: Gnome Doorstop - Large

USD 250 - 325

Hubley Mfg. Co. - Lancaster, PA. 1930 - 13 3/8"T x 6 1/4"W



317: Wooden Spread-Winged Eagle Carving - Mounted to a Brass Base

USD 500 - 700

American 1930 - 9 1/2"T x 18 1/2"W



318: Wooden Trick Drawer Bank

USD 175 - 225

American 1920 - 9 1/8"T x 4 1/2"W



319: Shoot the Chute Mechanical Bank Box - This is an Original Box

USD 1,250 - 1,750

J & E Stevens Co. - Cromwell, CT. 1915 - 3"T x 7 1/4"W x 10"L

Summer Sizzling Sale - RSL Online Only



320: Folk Art Wooden - Trick Drawer Bank

USD 150 - 200

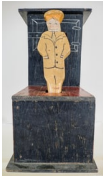
American 1920 - 5"T x 5 1/4"W



321: Tramp Art Carved Tripping Sentry Bank

USD 225 - 300

English 1910 - 7 1/4"T x 8 3/8"W x 5 1/4"D



322: Pat-a-Cake Bank Put Money in the Oven - Scarce

USD 300 - 400

English 1920 - 7 3/4"T x 7 1/8"W x 3 3/4"D



323: Large Trick Drawer Bank

USD 200 - 275

American 1920 - 11"T x 6"W x 6"D



324: Fur Arme Waisen - For Small Orphans - Alms Box and Cigar Cutter - Extremely Rare, less than 5 known USD 1,250 - 1,750

German 1920 - 14"T x 10 1/4"W



325: Silhouette Scottie Doorstop

USD 75 - 100

American 1930 - 7 1/2"T x 9"W



326: Parrot in Medallion Doorstop

USD 125 - 175

American 1920 - 9 3/8"T x 5"W



327: Squirrel with Nut on Log Doorstop

USD 250 - 350

American 1920 - 11 1/4"T x 9 1/2"W

Summer Sizzling Sale - RSL Online Only



328: Bloodhound Silhouette Doorstop

USD 125 - 175

Made by Spencer - American 1930 - 15 1/2"T x 5"W



329: Crying Pup Doorstop - Scarce

USD 225 - 275

American 1925 - 7 1/2"T x 3"W



330: Clown Doorstop - Scarce

USD 300 - 400

Made by CJO - American 1930 - 10 1/4"T x 4 1/4"W



331: De Bug Bank

USD 175 - 225

Made by Charles Reynolds - Virginia 1999 - 5"T x 7 3/4"W



332: The Oregon Trail Bank

USD 225 - 275

Made by Charles Reynolds - Virginia 1993 - 5 1/2"T x 13 1/2"L



333: Toonerville Bus Bank - Scarce

USD 300 - 400

Made by Charles Reynolds - Virginia 2005 - 6"T x 11"L



334: Williamsburg Bank

USD 225 - 275

Made by Charles Reynolds - Virginia 1991 - 6 1/4"T x 11"L



335: The Hollywood Bank

USD 200 - 275

Made by Charles Reynolds - Virginia 1989 - 7 1/2"T x 10"L

Summer Sizzling Sale - RSL Online Only



336: 92 Vote Bank

USD 300 - 400

Made by Charles Reynolds - Virginia 1992 - 10 1/2"T x 6 1/2"W



337: Decision 2000 Bank

USD 300 - 400

Made by Charles Reynolds - Virginia 2000 - 8 1/2"T x 8"W



338: Falls Church Virginia Bank

USD 275 - 375

Made by Charles Reynolds - Virginia 1999 - 6 1/2"T x 9 1/2"W x 6"D



339: Tug-Over-War 2004

USD 250 - 350

Made by Charles Reynolds - Virginia 2004 - 7 1/2"T x 7"W



340: Horse Bell Toy

USD 80 - 120

James Fallows Co. - Philadelphia 1885 - 3 1/2"T x 6 1/2"L



341: Horse on Platform Base

USD 100 - 150

James Fallows Co. - Philadelphia 1885 - 5"T x 6"L



342: Early American Tin - Scarce Double Horse on Platform Base

USD 225 - 275

George Brown Company - Forestville, CT. 1880 - 3 1/2"T x 6 1/2"L



343: Early American Tin U.S. Mail Truck

USD 125 - 175

George Brown Company - Forestville, CT. 1880 - 3"T x 6 1/2"L

Summer Sizzling Sale - RSL Online Only



344: Two Horse American Tin Trolley

USD 400 - 500

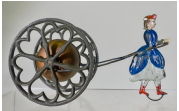
James Fallows Co. - Philadelphia 1890 - 3 3/4"T x 11"L



345: Pure Milk Wagon and Bell Toy

USD 300 - 400

James Fallows Co. - Philadelphia 1885 - 6 1/4"T x 12"L



346: American Tin Girl with Hoop Skirt - Bell Toy Very Scarce

USD 450 - 550

Gong Bell Mfg. Co. - Connecticut 1885 - 3 3/4"T x 7"L



347: Articulated Horse Trainer - American Tin

USD 700 - 900

James Fallows Co. - Philadelphia 1890 - 6 3/4"T x 9 1/4"L



348: Shepherdess with Her Sheep - American Tin Toy Very Scarce

USD 800 - 1,000

George Brown Company - Forestville, CT. 1885 - 5"T x 9"L



349: Monkey Riding an Elephant - American Tin Toy

USD 350 - 450

George Brown Company - Forestville, CT. 1890 - 8"T x 10"L



350: Extremely Early American Tin Bandwagon

USD 550 - 750

Francis, Field, Francis Co. - Philadelphia 1855 - 3 1/2"T x 11 1/2"L



351: Double Horse American Tin Doctors Buggy - Articulated Canopy

USD 1,250 - 1,750

Merriam Mfg. Co. - Connecticut 1880 - 6"T x 12"L

Summer Sizzling Sale - RSL Online Only



352: Fancy Goods Toys Notions Wagon - Fantastic American Tin Toy

USD 1,500 - 2,000

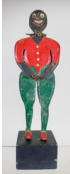
James Fallows Co. - Philadelphia 1885 - 8 3/4"T x 17"L



353: Wooden Carving on Pedestal

USD 225 - 275

American 1900 - 10"T x 2 1/2"W



354: Young Boy Taking a Leak - Novelty Wooden Sculpture

USD 225 - 275

American 1930 - 10 1/4"T x 2 3/4"W



355: Old Man Clockwork Walking Toy - Very Scarce and Desirable

USD 1,750 - 2,250

Ives, Blakeslee Company - Bridgeport, CT. 1875 - 9 1/4"T x 3 3/4"W



356: Fantastic Paper and Wood Steam Toy Attachment

USD 450 - 550

Ives, Blakeslee Company - Bridgeport, CT. 1880 - Box is 7"T x 22 3/4"L



357: Cornell's Cookie Corner - Folk Made Wooden Truck

USD 150 - 200

American Late 1930's - 8 1/4"T x 17"L



358: Bank of America Truck

USD 100 - 150

Made by Smith Miller - California 1950's - 8"T x 14"L



359: Fine Breads and Cakes Wagon

USD 550 - 750

German Circa 1915 - 12"T x 18"L

Summer Sizzling Sale - RSL Online Only



360: The Royal Blue Line - Paper Litho Floor Train

USD 600 - 900

American 1895 - 6"T x 44"L



361: Buddy L Flatbed Truck

USD 225 - 275

East Moline, IL. 1925 - 8"T x 24"L



362: Three Tin/Glass Street Lamps

USD 150 - 200

American 1905 - 8"T - Carl and Linda Thomas Collection



363: Three Porcelain Childrens Dishes on Small Tin Plate

USD 75 - 100

American/English 1910/20's - Largest 8"Diameter - Carl and Linda Thomas Collection



364: Early Gravity Acrobat Toy

USD 250 - 350

European 1890's - 7"T x 7"L



365: Group of Wood Penny Toys

USD 175 - 225

German 1920 - Most 1 1/2" to 2 1/2"L - Carl and Linda Thomas Collection



366: Wood and Cardboard Miniature Houses

USD 125 - 175

German 1920/30's - Most about 3 1/2"T x 4"W - Carl and Linda Thomas Collection



367: ABC Animal Pins

USD 125 - 175

American 1915 - Most 3" to 3 1/2"Tall - Carl and Linda Thomas Collection

Summer Sizzling Sale - RSL Online Only



368: Assorted Paper on Wood - ABC Puzzle Blocks

USD 125 - 175

American 1890's - Assorted Sizes - Carl and Linda Thomas Collection



369: ABC Blocks and Puzzle Set

USD 150 - 200

American 1915 - Box is 4"T x 10 1/2"L - Carl and Linda Thomas Collection



370: ABC Cutouts/Rockers

USD 150 - 200

American 1915 - 4 1/2"T x 4 1/2"W - Carl and Linda Thomas Collection



371: ABC Wood and Paper Blocks

USD 200 - 250

American 1895 - Most blocks are 4"T x 3"W - Carl and Linda Thomas Collection



372: ABC/Puzzle Block Set

USD 175 - 225

American 1900 - Blocks are 2 1/2"T x 2"W - Carl and Linda Thomas Collection



373: ABC Picture Blocks

USD 150 - 200

Milton Bradley Co. - Springfield, MA. 1920 - Box is 5 1/2"T x 12 1/2"W - Carl and Linda Thomas Collection



374: Our Little Friends - ABC Blocks - Fowls Edition

USD 200 - 250

American 1905 - Box is 12 1/2"T x 8 1/2"W - Carl and Linda Thomas Collection



375: ABC and Picture Blocks

USD 175 - 225

McLoughlin Bros. - New York Dates 1908 - Box is 8 3/4"T x 8"W - Carl and Linda Thomas Collection

Summer Sizzling Sale - RSL Online Only



376: Topsy-Turvy Cloth Doll with 19th Century Cradle

USD 225 - 300

American 1880 / Doll 1905 - Cradle is 7 5/8"T x 14"L - Carl and Linda Thomas Collection



377: ABC Building Blocks for Union College

USD 175 - 225

By S. Hill Manufacturing - Williamsburg, LI. 1865 - Box is 11"T x 8 1/4"W - Carl and Linda Thomas Collection



378: Alligator Nutcracker - Cast Iron

USD 125 - 175

American 1920 - 12"L x 3 1/4"W - Carl and Linda Thomas Collection



379: Denman's Games and Puzzles - Kings of England

USD 150 - 200

Made by Blakeman and Mason - New York 1860's - 7 1/2"T x 5"W - Carl and Linda Thomas Collection



380: Noah's Ark with Patriotic Eagle - Emblems of France, America, England

USD 250 - 325

American Circa 1905 - 7 1/2"T x 9 1/2"L



381: The Wonder Noah's Ark - Paper Litho and Wood

USD 225 - 275

American 1910 - 9 1/2"T x 22"L



382: Thetis Sailboat - Paper Litho on Wood

USD 300 - 400

American 1895 - 13 1/4"T x 13"L - Carl and Linda Thomas Collection



383: Boston Paper Litho Gun Boat

USD 350 - 450

Made by Bliss Mfg. - Pawtucket, RI. 1895 - 18"T x 20"L - Carl and Linda Thomas Collection

Summer Sizzling Sale - RSL Online Only



384: Barney and Ballum's Famous Circus Train - Made of Stenciled Wood

USD 225 - 275

American Circa 1920 - 8 3/4"T x 14 1/4"L - Carl and Linda Thomas Collection



385: Miniature Menagerie Wagon

USD 150 - 200

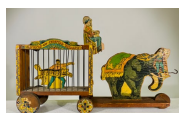
Bligg Mfg. Co. - Pawtucket, RI. 1895 - 4 1/4"T x 9"L - Carl and Linda Thomas Collection



386: Tiger Tamer Circus Menagerie - Largest Size

USD 200 - 250

Bliss Mfg. Co. - Pawtucket, RI. 1895 - 9"T x 15"L - Carl and Linda Thomas Collection



387: Monkey Riding Horse Circus Cage - Largest Scale

USD 200 - 250

Bliss Mfg. Co. - Pawtucket, RI. 1895 - 9"T x 15"L - Carl and Linda Thomas Collection



388: Jeanette Circus Game in cardboard Box

USD 150 - 200

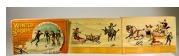
Jeanette Toy and Novelty Co. - Jeanette, PA. 1930 - 10"T x 10"Circular - Carl and Linda Thomas Collection



389: The Flying Witches

USD 100 - 150

By The Reason Manufacturing - English 1890 - Box is 4"T x 16"L - Carl and Linda Thomas Collection



390: Winter Sports Fold Out Book

USD 150 - 200

McLoughlin Bros. - New York 1900 - Closed Book is 12"L x 7 3/4"T - Carl and Linda Thomas Collection



391: The Little Folks Farmyard

USD 175 - 225

McLoughlin Bros. - New York 1910 - Box is 12 1/2"W x 9 1/2"T - Carl and Linda Thomas Collection

Summer Sizzling Sale - RSL Online Only



392: Two Paper Litho Games - Bugville Games/Crows in the Corn

USD 225 - 275

American 1920/1930 - Larger Box is 14"W x 12 1/4"T - Carl and Linda Thomas Collection



393: The Game of Ten Little Indians

USD 125 - 175

By John W. Liff and Co. - Chicago, IL. 1920 - Box is 12"W x 9"T - Carl and Linda Thomas Collection



394: Jim Crow Ten Pins

USD 225 - 275

By J. Ottman Lith. Co. - New York 1920 - Box is 7 3/4"Square - Carl and Linda Thomas Collection



395: Ten Little People-Pins

USD 300 - 400

Made by Chad Valley - English 1920 - Box is 17"W x 13"T - Carl and Linda Thomas Collection



396: Mother Goose Ladder Toy

USD 125 - 175

Bliss Mfg. Co. - Pawtucket, RI. 1890 - 33"T x 3 3/4"W - Carl and Linda Thomas Collection



397: The Brownies Ladder

USD 250 - 325

Bliss Mfg. Co. - Pawtucket, RI. 1890 - 32"T x 3 3/4"W - Carl and Linda Thomas Collection



398: Our Comical Ladder

USD 250 - 325

Bliss Mfg. Co. - Pawtucket, RI. 1900 - 32 1/2"T x 3 3/4"W - Carl and Linda Thomas Collection



399: The Bruin Boy's Shooting Gallery

USD 125 - 175

Made by Spears Games - English 1930's - 10"T x 19"W Set up - Carl and Linda Thomas Collection

Summer Sizzling Sale - RSL Online Only



400: Mother Goose Dime Museum - Scarce Paper Litho on Wood

USD 200 - 300

American 1890 - 9 3/4"T x 14"W - Carl and Linda Thomas Collection



401: Two House That Jack Built Games

USD 150 - 200

Ayer and Co. and Parker Bros. - Lowell and Salem, MA. 1900 - Larger is 7"W x 12 3/4"T - Carl and Linda Thomas Collection



402: Zouave Build-a-Game Toss

USD 125 - 175

American 1890 - Various sizes depending on assembly - Carl and Linda Thomas Collection



403: Lake Shore and Michigan Floor Train - Paper Litho on Wood

USD 175 - 225

Bliss Mfg. Co. - Pawtucket, RI. 1890 - 4 3/4"T x 27"L - Carl and Linda Thomas Collection



404: Gnomes - Roulette

USD 150 - 200

German Circa 1920 - Box is 12"Square - Carl and Linda Thomas Collection



405: Goblin Ten Pins with Cannon

USD 400 - 500

McLoughlin Bros. - New York 1890's - Box is 10"T x 15"L - Carl and Linda Thomas Collection



406: Palmer Cox Brownie 9 Pin Set

USD 350 - 450

McLoughlin Bros. - New York 1893 - Box is 14 3/4"T x 17"W x 2"D - Carl and Linda Thomas Collection



407: Clockwork Panorama - Dreaming of the Devil

USD 800 - 1,000

Ives, Blakeslee Company - Bridgeport, CT. 1880's - 15"W x 11 5/8"T x 4 1/2"D - Carl and Linda Thomas Collection

Summer Sizzling Sale - RSL Online Only



408: The Automatic Dancers

USD 1,200 - 1,500

Automatic Toy Works Co. - New York City 1865 - 9"W x 9 1/2"T x 8"D - Carl and Linda Thomas Collection



409: Groceries Market Toy

USD 250 - 350

Bliss Mfg. Co. - Pawtucket, RI. 1905 - 8"W x 11 5/8"T x 7 1/8"D - Carl and Linda Thomas Collection



410: The House that Jack Built - Farmhouse with People and Animals

USD 450 - 550

American Circa 1905 - 10"W x 10 1/2"T x 5 1/2"D - Carl and Linda Thomas Collection



411: The House that Jack Built - Large Size with Thirty Figures and Fencing

USD 600 - 800

American 1905 - 14"W x 12 1/4"T x 7 1/4"D - Carl and Linda Thomas Collection



412: Single Horse Hansom Cab

USD 100 - 150

Hubley Mfg. Co. - Lancaster, PA. 1910 - 8"L x 8 1/8"T - The Olshefski Collection



413: Mule Drawn Stake Wagon

USD 80 - 120

Wilkins Hardware - Keene, NH. 1905 - 10 1/4"L x 4 1/2"T - The Olshefski Collection



414: Sulky Toy

USD 350 - 450

Pratt and Letchworth - Buffalo, NY. 1890 - 9 1/4"L x 5 1/4"T - The Olshefski Collection



415: Shell Chariot Pulled by Elephant with Stiff Leg - Scarce

USD 200 - 250

Harris Toy Co. - Toledo, OH. 1895 - 9 5/8"L x 3 1/4"T - The Olshefski Collection

Summer Sizzling Sale - RSL Online Only



416: Yellow Single Horse Stake Wagon

USD 225 - 300

Hubley Mfg. Co. - Lancaster, PA. 1910 - 15 1/4"L x 5 1/4"T - The Olshefski Collection



417: Donkey Drawn Coal Wagon

USD 400 - 500

Kenton Hardware - Kenton, OH. 1910 - 14"L x 6 1/2"T - The Olshefski Collection



418: Single Horse Yellow Stake Wagon - Tin and Cast Iron

USD 350 - 400

Wilkins Hardware - Keene, NH. 1905 - 13 1/8"L x 6 3/4"T - The Olshefski Collection



419: Single Horse Ice Wagon

USD 300 - 400

Hubley Mfg. Co. - Lancaster, PA. 1910 - 15 1/2"L x 6"T - The Olshefski Collection



420: Royal Circus Bear Cage

USD 450 - 550

Hubley Mfg. Co. - Lancaster, PA. 1910 - 15 1/2"L x 8 1/2"T - The Olshefski Collection



421: Transfer Wagon - Two Horses

USD 300 - 400

Dent Hardware Company - Fullerton, PA. 1915 - 20"L x 7 3/4"T - The Olshefski Collection



422: Single Horse Dump Wagon - Tin and Cast Iron

USD 300 - 400

Wilkins Hardware Co. - Keene, NH. 1905 - 13"L x 5 1/2"T - The Olshefski Collection



423: Panama Dump Wagon

USD 450 - 550

Wilkins Hardware Co. - Keene, NH. 1905 - 19 5/8"L x 5 3/4"T - The Olshefski Collection

Summer Sizzling Sale - RSL Online Only



424: Brewery Wagon

USD 350 - 450

Wilkins Hardware Co. - Keene, NH. 1905 - 20 1/4"L x 8"T - The Olshefski Collection



425: Single Horse Cart

USD 225 - 300

Dent Hardware Co. - Fullerton, PA. 1915 - 9 1/2"L x 5"T - The Olshefski Collection



426: Nickel Plated Road Cart

USD 350 - 450

Shimer Toy Co. - Freemansburg, PA. 1905 - 10 3/4"L x 5 3/4"T - The Olshefski Collection



427: Hansom Cab

USD 275 - 375

Kenton Hardware - Kenton, OH. 1915 - 11"L x 7"T - The Olshefski Collection



428: Mama Katzenjammer Spanking Toy - Scarce

USD 900 - 1,200

Kenton Hardware - Kenton, OH. 1910 - 11 1/2"L x 6"T - The Schroeder and Olshefski Collections



429: The Barouche Carriage - Scarce

USD 1,200 - 1,500

Pratt and Letchworth Co. - Buffalo, NY. 1890 - 17"L x 7"T - The Olshefski Collection



430: Two Horse Ladder Wagon

USD 125 - 175

Hubley Mfg. Co. - Lancaster, PA. 1915 - 14"L x 5"T - The Olshefski Collection



431: Diminutive Nickel Plated Hose Reel

USD 275 - 375

Shimer Toy Co. - Freemansburg, PA. 1900 - 10 1/4"L x 5"T - The Olshefski Collection

Summer Sizzling Sale - RSL Online Only



432: Two Horse Early Fire Pumper

USD 550 - 750

Harris Toy Co. - Toledo, OH. 1895 - 15"L x 5 1/4"T - The Olshefski Collection



433: Two Horse Hose Reel

USD 400 - 500

Harris Toy Co. - Toledo, OH. 1895 - 15"L x 5 1/8"T - The Olshefski Collection



434: Two Horse Ladder Wagon

USD 200 - 250

Dent Hardware Co. - Fullerton, PA. 1910 - 20"L x 7 1/2"T - The Olshefski Collection



435: Two Horse Ladder Wagon

USD 300 - 400

Harris Toy Co. - Toledo, OH. 1905 - 20"L x 7 1/4"T - The Olshefski Collection



436: Two Horse Hose Reel

USD 350 - 450

Hubley Mfg. Co. - Lancaster, PA. 1910 - 20"L x 7 1/4"T - The Olshefski Collection



437: Two Horse Ladder Wagon - Scarce with Detachable Horses

USD 750 - 950

Wilkins Hardware Co. - Keene, NH. 1893 - 27"L x 7"T - The Olshefski Collection



438: Old Jalopy Windup Car

USD 125 - 175

Louis Marx Co. - New York 1940's - 7"L x 4"T



439: Tin Lizzie Windup

USD 150 - 200

American 1930 - 7"L x 4"T

Summer Sizzling Sale - RSL Online Only



440: Pujando pero Llego Windup - Complaining But Arriving Car

USD 175 - 225

Made by Plastic Marx - Internationally Made 1950 - 7"L x 4"T



441: Leaping Lena Windup Car

USD 175 - 225

Made by Ferdinand Strauss - New York 1920 - 8 1/4"L x 4 3/4"T



442: Double Figured Steam Toy Attachment

USD 100 - 150

German 1920's - 9 1/2"W x 4"T x 4 1/4"D



443: Over and Under No. 28

USD 125 - 175

Wolverine Supply Mfg. Co. - Pittsburgh, PA. 1918 - Box is 10"W x 5"T x 4"D



444: Two Tin Mechanical Banks

USD 100 - 150

West German / American 1950/1930 - Pecking Bird is 5"T x 4"D x 3 1/8"W



445: Battery Operated Cable Car

USD 100 - 150

Made by Alps - Japanese 1950 - Box is 7"T x 5"W



446: Zeppelin Toy in Box

USD 150 - 200

West Germany 1960's - Box is 13 1/4"W x 7 1/4"T x 5"D



447: Penny Toy Hand Cranked Dandy Man

USD 175 - 225

German 1920's - 3 1/2"T x 2 3/4"W

Summer Sizzling Sale - RSL Online Only



448: Young Black Man Rocking Penny Toy - Scarce

USD 200 - 250

Meier and Co. - German 1920's - 1 7/8"T x 2"W



449: Amos and Andy Fresh Air Taxi Windup Toy

USD 250 - 350

Copyright by Correll and Gosden - Made by Louis Marx and Co. - New York 1920's - 5"T x 8"L



450: Lead and Iron Native Americans

USD 50 - 75

American 1930's - About 3"Tall



451: Windup Dancing Katinka

USD 100 - 150

Lindstrom Corp. - American 1930's - 4 1/2"T x 2"W



452: Little Red Hen Toy

USD 125 - 175

Baldwin Mfg. Co. Inc. - Brooklyn, NY. 1930's - Toy is 4 3/4"T x 5 1/2"W



453: Marx Climbing Fireman

USD 80 - 120

New York City 1930's - 22"T x 5"D



454: Two Elephant Banks

USD 60 - 90

A.C. Williams Co. - Ravenna, OH. 1915 - Larger is 4 3/4"T x 6 1/2"L



455: Two Liberty Bell Banks

USD 40 - 60

Grey Iron Casting Co. - Pennsylvania, 1920's - 4"T x 3 3/4"Circular

Summer Sizzling Sale - RSL Online Only



456: Bank Building

Grey Iron Casting Co. - Pennsylvania, 1900 - 6"T x 4 1/4"W

USD 75 - 100



457: Three Dial Radio - Small in Blue

Kenton Hardware - Kenton, OH. 1920's - 2 3/4"T x 4 1/2"W

USD 40 - 60



458: Safe Bank

American 1890 - 4"T x 2 3/4"W

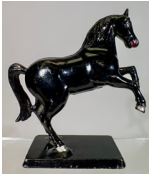
USD 75 - 100



459: Middy Bank

Ives, Blakeslee Co. - Bridgeport, CT. 1895 - 5 1/4"T x 2 1/2"W

USD 40 - 60



460: Horse on Rectangular Base

A.C. Williams Co. - Ravenna, OH. 1920's - 7 1/2"T x 7"W

USD 75 - 100



461: Two Tin Book Banks - Candy/Biscuit Boxes

English 1930 - 5 5/8"T x 4"W

USD 60 - 90



462: Two Tin Book Banks - Candy/Biscuit Boxes

English 1930 - 5 5/8"T x 4"W

USD 60 - 90



463: Two Ceramic Humpty Dumpty Banks

Japanese/European 1930's - 6"T x 4"W

USD 50 - 75

Summer Sizzling Sale - RSL Online Only



464: Two Ceramic Banks - Hobo / Man with Night Cap

USD 75 - 100

American 1920/30's - Taller is 5 1/2"T x 4 1/2"D



465: Two Lead / Spelter Banks

USD 60 - 90

Japanese / German 1930/40's - Indian 4"T x 3 3/4"D



466: Two Tin Registering Banks

USD 100 - 150

German 1930/1940 - 4 3/4"T x 3 1/4"W



467: Two Tin Vending Banks

USD 125 - 175

European 1920/1930 - 6 1/4"T x 4"W



468: Diana Chocolat Vending Bank

USD 175 - 225

By Hartwig and Vogel - German 1915 - 5 1/2"T x 3 1/4"W



469: Signal Cabin Bank

USD 70 - 90

German 1920 - 6 3/4"T x 4"W



470: Wooden Articulated Horse on Platform

USD 175 - 225

American 1920 - 10 1/2"T x 12"L



471: Wood and Tin Dog in Doghouse - Pull Toy

USD 100 - 150

Made by Hustler Toy Co. - Sterling, IL. 1930 - 6 3/4"T x 11"L

Summer Sizzling Sale - RSL Online Only



472: Sam's Transfer Wagon

USD 200 - 275

Made by Hustler Toy Co. - Sterling, IL. 1930 - 7"T x 19 1/2"L



473: Folk Art Wooden Drummer

USD 100 - 150

By Everette Brown - Cowen, WV. 1930 - 7 1/2"T x 4 1/2"D



474: Thonet Wooden Armchair

USD 125 - 175

Austrian Circa 1915 - 11"T x 7 1/2"W



475: Penny Toy Ladder Truck

USD 200 - 250

German Circa 1925 - 2 1/4"T x 3 3/4"L



476: Penny Toy Irish Mail

USD 175 - 225

J. Meier and Co. - German 1925 - 3"T x 3"L



477: Occupational Shaving Mug

USD 150 - 200

Limoges, France 1890 - 3 1/2"T x 4 1/4"W



478: Fire Motif Biscuit Tin - Scarce

USD 275 - 375

English 1895 - 6"T x 6 3/4"W x 6 3/4"D



479: The Circuit Rider Clockwork Toy - Very Scarce

USD 2,500 - 3,500

Ives, Blakeslee Co. - Bridgeport, CT. 1890 - 13 1/2"T x 8"W x 4"D

Summer Sizzling Sale - RSL Online Only



480: Young Man Riding a Horse Clockwork Toy on Rocking Base - Only Two or Three Known Examples USD 3,000 - 4,000
Ives, Blakeslee Co. - Bridgeport, CT. 1880 - 8 1/2"T x 9 5/8"L x 2 1/2"D



481: Double Figured Clockwork Jiggling Toy on Wood and Tin Base USD 700 - 900
Ives, Blakeslee Co. - Bridgeport, CT. 1885 - 9 1/4"T x 7 1/2"W x 4"D



482: The Pugilists Clockwork Toy - Scarce USD 2,000 - 2,500
Ives, Blakeslee Co. - Bridgeport, CT. 1880 - 11"T x 8 1/2"W x 4"D



483: Two Still Banks USD 30 - 50
American / English 1930/1952 - Crown is 3 1/2"T x 3 1/4"W



484: Terrier by Tin Drum Bank - Key Lock Trap and Retain Key USD 80 - 120
German 1930 - 1 3/4"T x 2 5/8"W



485: Large Donkey Bank - Brown with Blue Saddle USD 80 - 120
A.C. Williams Co. - Ravenna, OH. 1920 - 6 5/8"T x 6 1/8"L



486: Caisse Bank Marked Georges - Made of Aluminum USD 125 - 175
French 1920's - 6 1/4"T x 3 5/8"W



487: Old Mill Bank - Made of Aluminum USD 125 - 175
American Circa 1930's - 5 1/4"T x 6 3/4"W x 4 1/4"D

Summer Sizzling Sale - RSL Online Only



488: Log Cabin Cast Iron Match Safe

USD 150 - 200

Kyser and Rex Co. - Philadelphia, 1880 - 2 5/8"T x 4"W



489: 1882 Villa Bank

USD 125 - 175

Kyser and Rex Co. - Philadelphia 1882 - 5 1/2"T x 4"W



490: Prison / Villa Bank

USD 200 - 250

Kyser and Rex Co. - Philadelphia, 1890 - 5 1/2"T x 5"W



491: Cottage Bank

USD 125 - 175

Grey Iron Casting Co. - Columbia, PA. 1920's - 3 3/4"T x 3 3/8"W



492: High Rise Building - Smallest

USD 80 - 120

Kenton Hardware - Kenton, OH. 1915 - 3 1/4"T x 1 3/4"W



493: Flat Iron Bank - Second Smallest

USD 75 - 100

Kenton Hardware - Kenton, OH. 1915 - 5 1/2"T x 3 1/2"D



494: Tiered Highrise Bank

USD 150 - 200

Kenton Hardware - Kenton, OH. 1915 - 6"T x 2 3/4"W

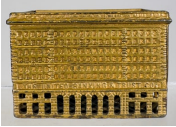


495: Tower Bank

USD 150 - 200

John Harper Ltd. - English 1905 - 9"T x 3 3/4"W

Summer Sizzling Sale - RSL Online Only



496: The United Banking and Trust Co. - Scarce

USD 150 - 200

American 1915 - 2 3/4"T x 4"W x 2 3/4"D



497: Town Hall Bank with Clocks

USD 350 - 450

Kyser and Rex Co. - Philadelphia, 1890 - 4 1/2"T x 3 1/4"W



498: Home Savings Bank - Multicolor

USD 200 - 250

J & E Stevens Co. - Cromwell, CT. 1890 - 6"T x 4 1/2"W



499: State Bank - Multicolor

USD 250 - 350

Kyser and Rex Co. - Philadelphia, 1890 - 5 3/4"T x 4 1/4"W



500: Trick Pony Trade Card

USD 50 - 75

Shepard Hardware Co. - Buffalo, NY. 1890 - 5"W x 3"T



501: Humpty Dumpty Trade Card

USD 250 - 350

Distributor Card for Burl, Sons and Co., Detroit, Mich - Framed 7"T x 5"W



502: American Eagle / Eaglets Bank Trade Card

USD 125 - 175

J & E Stevens Co. - Cromwell, CT. 1880 - Framed 6 1/4"T x 8 1/2"W



503: Circus Bank Trade Card - Very Rare

USD 400 - 600

Distributor Card for Buehler, Bonbright and Co. - Philadelphia, PA. - Made by Shepard Hardware - Buffalo, NY. 1890 - Framed 5 1/2"T x 7 1/2"W

Summer Sizzling Sale - RSL Online Only



504: Bell Between Two Wheels Toy

USD 100 - 150

Gong Bell Mfg. Co. - Connecticut 1900 - 4" Circular



505: Rough Rider Bell Toy

USD 75 - 125

Watrous Mfg. Co. - Connecticut, Circa 1915 - 3 1/4" T x 7" L



506: Teddy Bears Bell Toy

USD 300 - 400

Watrous Mfg. Co. - Connecticut 1910 - 4 1/4" T x 6 1/4" L



507: Billy Goat Bell Toy

USD 300 - 400

Gong Bell Mfg. Co. - Connecticut, 1890 - 4 1/2" T x 7 1/2" W



508: Daisy Bell Toy

USD 750 - 950

Gong Bell Mfg. Co. - Connecticut, Circa 1890 - 5 3/4" T x 8 3/4" W



509: Kicking Mule Bell Ringer

USD 600 - 800

Gong Bell Mfg. Co. - Connecticut, 1890 - 4 3/4" T x 7 3/4" L



510: Monkey Bellhop Bell Toy - Scarce

USD 700 - 900

Gong Bell Mfg. Co. - Connecticut, 1900 - 5 1/4" T x 6" L



511: Trick Pony Bell Ringer

USD 900 - 1,200

Gong Bell Mfg. Co. - Connecticut, 1895 - 4 3/4" T x 7 3/4" L

Summer Sizzling Sale - RSL Online Only



512: Baby Quieter Bell Toy - Scarce

USD 750 - 950

Gong Bell Mfg. Co. - Connecticut, 1895 - 5 1/2"T x 7 1/2"L



513: Small Horse Drawn Toy - Cast Iron

USD 125 - 175

American 1890 - 2 1/2"T x 3 3/4"L



514: Yellow Ice Wagon

USD 150 - 200

Hubley Mfg. Co. - Lancaster, PA. 1915 - 3 1/2"T x 8 1/2"L



515: Red Ice Wagon

USD 150 - 200

Hubley Mfg. Co. - Lancaster, PA. 1915 - 3 1/4"T x 8 1/4"L



516: Two Horse Ladder Wagon

USD 175 - 225

Hubley Mfg. Co. - Lancaster, PA. 1915 - 4 1/4"T x 13 1/4"L



517: Single Horse Hose Reel

USD 225 - 275

Kenton Hardware - Kenton, OH. 1915 - 5"T x 12 1/4"L



518: Double Mule Drawn Dump Wagon

USD 125 - 175

Hubley Mfg. Co. - Lancaster, PA. 1915 - 5 1/2"T x 14"L



519: Hay Wagon with Standing Driver - Rare

USD 225 - 300

Made in Canada - Circa 1920 - 4 1/4"T x 8 1/2"L

Summer Sizzling Sale - RSL Online Only



520: Cupid on a Slipper Fantasy Toy

USD 250 - 350

Kenton Hardware - Kenton, OH. 1910 - 4 1/2"T x 9"L



521: Hall's Excelsior Bank - Blue, Brown and Red

USD 350 - 450

J & E Stevens Co. - Cromwell, CT. 1870's - 5"T x 3 3/4"W



522: Hall's Excelsior Bank - Scarce Pumpkin Color

USD 750 - 950

J & E Stevens Co. - Cromwell, CT. 1870's - 5"T x 3 3/4"W



523: Hall's Excelsior Bank - Patriotic Color

USD 800 - 1,000

J & E Stevens Co. - Cromwell, CT. 1870's - 5"T x 3 3/4"W



524: Magic Bank - Yellow and Red

USD 900 - 1,200

J & E Stevens Co. - Cromwell, CT. 1870's - 5"T x 4 3/4"W



525: Organ Bank with Cat and Dog

USD 600 - 800

Kyser and Rex Co. - Philadelphia, 1882 - 7 1/4"T x 5 3/4"W



526: Punch and Judy - Small Letters

USD 800 - 1,000

Shepard Hardware Co. - Buffalo, NY. 1884 - 7 3/8"T x 6"W



527: Tin Minstrel Mechanical Bank - Very Scarce Spanish Version

USD 550 - 750

Circa 1920 - 7"T x 3 5/8"W

Summer Sizzling Sale - RSL Online Only



528: The Sentry Bank

USD 550 - 750

German Circa 1920 - 8 1/2"T x 3 1/4"W



529: Little Jocko Musical Bank - Scarce

USD 1,750 - 2,250

Strauss Mfg. Co. - New York City 1920 - 7 1/2"T x 6 1/2"W



530: Matches with Freedman's Bank Image on the Cover

USD 80 - 120

For Skeeter Haven of Sandusky Ohio - The Andrew Emerine Example - American 1940 - 5 1/4"T x 3 5/8"W Framed



531: Silvered Tin Musical Cylinder Bank

USD 80 - 120

Swiss 1950 - 6"T x 3 1/2"W



532: Mule Entering Barn Bank - Green Version

USD 950 - 1,250

J & E Stevens Co. - Cromwell, CT. 1880 - 5 1/4"T x 8 1/2"W



533: Bad Accident Bank

USD 1,000 - 1,500

J & E Stevens Co. - Cromwell, CT. 1890 - 6"T x 10 1/4"L



534: Chief Big Moon Mechanical Bank - Scarce Red and Yellow Base Version

USD 1,200 - 1,500

J & E Stevens Co. - Cromwell, CT. 1880 - 6 1/4"T x 10"W



535: Football Bank - Scarce

USD 1,250 - 1,750

English Circa 1895 - 4 1/4"L x 10"W

Summer Sizzling Sale - RSL Online Only



536: Mammy Mechanical Bank - Scarce Blue Dress Version

USD 2,750 - 3,750

Kyser and Rex Co. - Philadelphia, 1880's - 7"T x 4 1/2"W



537: Professor Pug Frog Bank - Very Scarce White Blanket Version

USD 3,000 - 4,000

J & E Stevens Co. - Cromwell, CT. 1890 - 7 1/4"T x 11 1/4"W
