

THE
RSIC
AUCTION Co

THE NORA AND AL HANCOCK AND
GEORGE MCGUIRE COLLECTIONS
WITH HAND SELECTED ADDITIONS



SATURDAY - DECEMBER 9TH, 2023



**THE NORA AND AL HANCOCK AND
GEORGE MCGUIRE COLLECTIONS
WITH HAND SELECTED ADDITIONS**

SATURDAY DECEMBER 9, 2023 - 10 AM EST

RSL AUCTIONS

P.O. Box 635
Oldwick, NJ 08858
908-823-4049
Cell 917-991-7352
FAX 908-823-4519
rslauctions@yahoo.com
rslauctionco.com

SPECIALISTS

Ray Haradin
Pittsburgh, PA
Banks, Toys, Soldiers, Tiffany Lamps
412-343-8733
raytoys@aol.com

Steven Weiss
New York, NY
Banks, Toys, American Folk Art, American Art & Sculpture
212-729-0011
sweiss57@icloud.com

Leon Weiss
Oldwick, NJ
Banks, Toys, American Folk Art and Door Stops
908-823-4049
Cell 917-991-7352
leonweiss@me.com

Julian Abernethy
Sr. Auction and Computer Specialist

Angela Weiss
908-823-4049
a.weiss@rslauctionco.com
Office Manager, Website and Shipping Coordinator

 [Facebook.com/RSL-Auction-Company](https://www.facebook.com/RSL-Auction-Company)
 [@rslauctions](https://twitter.com/rslauctions)

AUCTION #47

Saturday December 9th, 2023 10am (EST) Lots 1-534

WEBSITES:

rslauctionco.com LiveAuctioneers.com or BidSpirit.com

RSL Auctions
295 US Hwy 22 East
Suite 204 West
Whitehouse Station, NJ 08889
Look for “One Salem Square” Sign
Gallery Phone: 908-823-4049

PREVIEW:

Friday December 8th, 2023 8am to 5pm
Saturday December 9th, 2023 8am to 10am
Or by appointment, please call (908) 823-4049
to reserve a time.

RSL complies with New Jersey Covid Protocols.

ABSENTEE AND PHONE BIDDING DEADLINE:

BIDS MUST BE RECEIVED BY
FRIDAY, DECEMBER 8th, 2023

MAIL BIDS TO:

RSL Auctions, PO Box 635, Oldwick, NJ 08858

CALL BIDS TO:

Leon Weiss 908-823-4049 - Cell 917-991-7352

FAX BIDS TO:

RSL Auctions 908-823-4519

PAYMENT & SHIPPING

Leon Weiss 917-991-7352



DIRECTIONS TO OUR GALLERY

295 US Hwy 22 East
Suite 204 West
Whitehouse Station, NJ 08889
908-823-4049

From New England and Northern New Jersey

Cross the Tappan Zee Bridge and continue West on 287/87 about 14 miles to 287 South. Take 287 South to Exit 21B and merge onto 78 West (Clinton). Go to Exit 24 Whitehouse/Oldwick. Turn left at the light (towards Whitehouse). Go exactly 2 miles and turn onto U.S. Highway 22 West. Go 1.4 miles, staying in the left lane and passing one traffic light (Merck Drive). Go to the second turnaround after that light and head East on U.S. Highway 22 for 150 feet. Turn right into parking lot. Sign reads "One Salem Square".

From New York City

Lincoln or Holland Tunnel to the New Jersey Turnpike South. Travel only a few miles to Exit 14A-C. Get onto Route 78 West (Clinton) to Exit 24 (Whitehouse/Oldwick). Turn left at the light (towards Whitehouse). Go exactly 2 miles and turn onto U.S. Highway 22 West. Go 1.4 miles, staying in the left lane and passing one traffic light (Merck Drive). Go to the second turnaround after that light and head East on U.S. Highway 22 for 150 feet. Turn right into parking lot. Sign reads "One Salem Square".

Southern New Jersey and Points South

Take New Jersey Turnpike or Garden State Parkway to 287 North. It is about 20 - 22 miles to Route 78 West (Exit 21-B). Go to Exit 24 Whitehouse/Oldwick. Turn left at the light (towards Whitehouse). Go exactly 2 miles and turn onto U.S. Highway 22 West. Go 1.4 miles, staying in the left lane and passing one traffic light (Merck Drive). Go to the second turnaround after that light and head East on U.S. Highway 22 for 150 feet. Turn right into parking lot. Sign out front reads "One Salem Square".

Philadelphia Area

Take 95 North and cross into New Jersey. Exit for Route 31 (about 4 miles into New Jersey). Take 31 North about 20 miles to Route 78 East. (There are some traffic circles on 31 North – Always stay on 31 North until you hit Route 78 East). Take exit 18 and merge onto U.S. Highway 22 East and go 4.1 miles and turn into the parking lot. Sign out front reads "One Salem Square".

From the West

Take 78 East and cross into New Jersey. Take Exit 18 and merge onto U.S. Highway 22 and go 4.1 miles and turn into the parking lot. Sign out front reads "One Salem Square".

Please note that items sold in this catalog do not represent the personal views of RSL and it's employees.

THE NORA AND AL HANCOCK AND GEORGE MCGUIRE COLLECTIONS WITH HAND SELECTED ADDITIONS

SATURDAY DECEMBER 9TH, 2023
10AM EST LOTS 1-534



Accepting quality consignments
for future sales.

CONDITION GRADES

Mint (M)	98%+
Near Mint (NM).....	97-98%
Pristine.....	95-96%
Excellent (EX)	90-94%
Very Fine (VF)	85-89%
Very Good	80-84%

Prices realized may be downloaded
from liveauctioneers.com
immediately after the sale closes.

RSL AUCTIONS: CONDITIONS OF SALE

1. RSL Auctions acts as an agent for the seller. The contract for the sale of the property is between the seller and the buyer. No statements made within this catalog or made by a representative of or employee of RSL Auctions shall be deemed to be a warranty, representation, or assumption of liability with respect to the property's age, condition, size, quality, variety, importance, provenance, or historical relevance. All property is sold "as is".

2. All sales are final.

3. Buyers are responsible for satisfying themselves concerning the condition of the property.

4. The auctioneer will be solely responsible for determining the bidding increments.

5. The auctioneer will be the final judge in deciding which bidder has won an item. In the event of a dispute, the auctioneer at his discretion, shall decide whether to reopen bidding or not.

6. LiveAuctioneer's Bids: in order to bid through LiveAuctioneers, you must first register on LiveAuctioneer's website. RSL Auctions reserves the right, in our sole discretion, to refuse your registration or participation in the auction or to revoke your permission to participate before, during or after the sale.

6A: Bidspirit Bids - in order to bid through Bidspirit.com you must first register on the Bidspirit.com website. RSL Auctions reserves the right, in our sole discretion, to refuse your registration or participation in the auction or to revoke your permission to participate before, during or after the sale.

7. Absentee Bids: If you are unable to attend the actual sale, RSL Auctions are authorized to execute bids on your behalf. Complete an Absentee Bid Form and return to RSL Auctions BEFORE the absentee bid deadline. We cannot accept "Buy" bids. In the event that two identical bids are received, the first bid form received by RSL Auctions will have preference.

8. Phone Bids: Phone bids will also be accepted. To qualify for a phone line the same procedure of authorization required for an absentee bid is required. A backup bid in the event a party cannot be reached by phone is not required, but strongly recommended. There are a limited number of phone lines available. In the event that there are more requests than lines available, preference will go to the highest bidding parties. In the event, whether human or technical, that a phone call is not made, disconnected or the bidder cannot be reached at the number left, the backup bid will be executed. RSL Auctions cannot guarantee that phone bids will be executed.

9. Submit all questions regarding upcoming auction items at least 48 hours prior to the date of auction. We will make every effort to answer all submitted questions in a timely manner. However, we cannot guarantee that questions submitted within 48 hours of the auction date will be answered prior to the auction.

10. The buyer is required to pay New Jersey sales tax 7% unless exemption is allowed under the laws regulating such tax. Dealers must present a valid tax ID certificate in order to qualify for exemption.

11. Payment may be made by cash, personal check or credit card. A 23.5% buyer's premium will be added to all successful bids. A 3.5% discount will be applied for payment made by cash or personal check making the buyer's premium 20% if paid within 15 days. **Discount only applied to payment made within this time frame.** An additional 5% will be added to bids made through liveauctioneers.com. An additional 4% will be added to all bids made through Bidspirit.com. RSL Auctions reserve the right to hold all merchandise paid by check until payment has been cleared by the bank. This may take up to one month.

12. All accounts are to be settled within 15 days of the end of the sale.

13. There will be a \$50 charge added to all wire transfers.

14. In the event property is not paid for in full, RSL Auctions may pursue one or more of the following rights or remedies. A) charge interest at 2% per month of the unpaid balance. B) hold the defaulting buyer liable for the total amount due and commence legal proceedings for its recovery together with interest, legal fees and costs to the fullest extent permitted under applicable law. C) cancel the sale D) resell the property E) pay the seller the amount up to the net proceeds payable in respect to the amount bid by the default buyer minus one bid. F) or to take such other action as we deem necessary or appropriate.

15. Shipping may be arranged through RSL Auctions. A shipping fee of \$20 per lot, \$80 per 5 lots or \$150 per 10 lots is charged plus the incurred postage and insurance. International and large items will incur additional costs. Shipped items may take up to 45 days to be delivered. Due to Coronavirus, we strongly recommended that all International Packages be shipped via DHL Worldwide Express. We will gladly obtain a shipping quote for customers.

However, if you prefer to ship via the US Postal Service or any other carrier, we will make the arrangements. RSL Auction Company will not guarantee timely delivery or be financially responsible for those shipments.

Additional Shipping and Handling charges for all packages are listed above.

16. RSL Auctions has the capability to ship to international bidders. **By law, RSL Auctions cannot, and will not, declare lesser values for any international purchases and all shipments will include the invoice with purchase totals including the buyer's premium and shipping cost. All international bidders are responsible for knowing their country's laws on importing items and for paying all customs and duties on the items.**

17. RSL Auctions are not responsible for any typographical errors or omissions in this catalog or price key. Photographs in this catalog are of the actual objects being sold but are not shown to scale.

18. RSL Auctions reserve the right to refuse admission, participation in or request the departure of any person/persons.

19. RSL Auctions reserves the right to withdraw any property before, during and after the sale and shall have no liability whatsoever for such withdrawal.

20. In no event will our liability to a purchaser exceed the purchase price actually paid. RSL Auctions will not be responsible for any errors or failures to execute bids placed online or for any errors or omissions in connection therewith including, without limitation, errors or failures caused by (i) a loss of connection to the internet or the LiveAuctioneers Online Platform software by either RSL Auctions or the client; (ii) a breakdown or problem with RSL Auctions or LiveAuctioneers' Online Platform software; or (iii) a breakdown or problem with a client's internet connection, mobile network or computer.

21. RSL Auction's content on LiveAuctioneers' Online Platform ("Web Site" or "Platform") is published and maintained by LiveAuctioneers. If you are a registered user of LiveAuctioneers, the LiveAuctioneers' Privacy Policy governs your agreement with LiveAuctioneers with respect to LiveAuctioneers' collection, use, storage, and disclosure of your personal information. RSL Auctions does not control and is not responsible for the information and privacy practices of LiveAuctioneers on the LiveAuctioneers' Web site, which is operated entirely by LiveAuctioneers. You agree that RSL Auctions and its affiliates will not be responsible for, and that you release RSL Auctions and its affiliates from, any and all claims, liabilities, damages, losses and expenses related to unauthorized access to or use of, or any security breach relating to or affecting, LiveAuctioneers collection, use, storage, and disclosure of your personal information.

22. If any part of these Conditions of Sale are found by any court to be invalid, illegal or unenforceable, that part shall be discounted and the rest of the conditions shall continue to be valid to the fullest extent permitted by law.

23. By bidding at auction, whether present in person or by agent, by written bid, telephone or other means, the buyer indicates acceptance of these Conditions of Sale.

24. The rights and obligations with respect to the Conditions of Sale shall be governed by the laws of the state of New Jersey.

25. All rights reserved. Entire contents Copyright 2023. RSL Auctions Copyright includes, but not limited to, print, media, microfilm and electronic media, such as CD-ROM's and online computer services.

STILL BANKS



Lot 1
Two Donkey Banks
 German - 1920's
 Excellent to Pristine
 Estimate: \$75 - \$125



Lot 2
Two Donkey Banks
 German - 1920's
 Excellent Plus
 Estimate: \$100 - \$150
 One a souvenir for "Cliff House" in San Francisco.



Lot 3
Two Donkey Banks
 German - 1920's
 Excellent Plus
 Estimate: \$175 - \$225
 The taller one is fairly scarce.



Lot 4
Donkey Facing Left
 Mid Sized
 German - 1920's - 4 1/4" Tall
 Very Fine Condition
 Estimate: \$100 - \$150
 The top of the satchel must be adjusted to close.
 Missing the upper hasp.



Lot 5
Donkey Facing Left - Large
 German - 1920's - 5 1/4" Tall
 Excellent Condition
 Estimate: \$150 - \$200



Lot 6
Cat by Drum
 Tin & Spelter
 German - 1930's
 Excellent Condition
 Estimate: \$100 - \$150



Lot 7
Pointer by Windmill
 Tin & Spelter
 German - 1930's.
 Excellent Condition
 Estimate: \$125 - \$175



Lot 8
Pointer by Doghouse
 Tin & Spelter
 German - 1930's.
 Excellent Condition
 Estimate: \$125 - \$175



Lot 9
Standing Leonberger
 Germany - Circa 1920
 Excellent Condition
 Estimate: \$350 - \$450



Lot 10
Puppy with Toothache - KLT
 Germany - Circa Late 1920's
 Pristine and Very Bright
 Estimate: \$450 - \$650



Lot 11
Seated Two-Toned Dachshunds
 Germany - Circa Mid 1920's
 Excellent (Lacks Heart Lock)
 Estimate: \$275 - \$325



Lot 12
Dog with Bandaged Eye
 Rare with Trap in Base
 Germany - Circa 1920.
 Excellent Plus Condition
 Estimate: \$550 - \$750



Lot 13
Dachshund with Party Hat
 Germany - Circa 1920
 Pristine (Lacks Heart Lock)
 Estimate: \$900 - \$1200



Lot 14
Seated Bull Dog Railroad Porter
 Germany - Circa Late 1910's
 Pristine Condition
 Estimate: \$900 - \$1200



Lot 15
English Pointer Beside Barrel
 Germany - Circa Late 1910's
 Excellent Plus Condition
 Estimate: \$400 - \$500



Lot 16
Seated Dachshund on Crate
 Germany - Circa Mid 1920's
 Pristine Condition
 Estimate: \$350 - \$450



Lot 17
Dogs and Doghouse Bank
 Germany - Circa Late 1910's
 Pristine Condition
 Estimate: \$350 - \$450



Lot 18
Scarce Yellow Chick Bank

Germany - Circa Mid 1920's
Excellent Plus Condition
Estimate: \$350 - \$450



Lot 19
Unusual Art Deco Dove

Souvenir Gift from New York
Unknown American Maker - 1930's
Ex - William Werbell Collection
Pristine Condition
(Missing piece of tail feather)
Estimate: \$125 - \$175



Lot 20
Art Deco Parrot - KLT

American Maker - Mid 1930's
Near Mint Condition
(One Talon Restored)
Estimate: \$300 - \$400



Lot 21
Flirty Eyed Sailor Boy

Germany - Circa Mid 1920's
Excellent Condition
(No Baseplate)
Estimate: \$300 - \$400



Lot 22
Monkey Smoking a Cigarette

Germany - Circa Late 1910's
Excellent Condition
(No Upper Hasp)
Estimate: \$300 - \$400



Lot 23
Sweet Mischievous Beggar Boy

Germany - Circa Late 1910's
Very Good Condition
(Missing Lower Hasp)
Estimate: \$400 - \$500



Lot 24
Small Foraging Brown Bear Cub

Germany - Circa Late 1910's
Excellent Condition
(Lacks Heart Lock)
Estimate: \$250 - \$350



Lot 25
Scarce Comical Hare Bank

Germany - Circa Mid 1920's
Pristine Condition
Estimate: \$550 - \$750



Lot 26
Donkey Beside Colorful Drum

A Souvenir from Oakland, Cal.
Germany - Circa Mid 1920's
Near Mint Condition
Estimate: \$450 - \$650



Lot 27
Cat with Red Bow
German - 1920's
Pristine Condition
Estimate: \$250 - \$350



Lot 28
Cat with Toothache
German - 1920's
Excellent Condition
Estimate: \$300 - \$400



Lot 29
Cat with Blue Bow
German - 1920's
Excellent Plus Condition
Estimate: \$200 - \$275



Lot 30
Baby Choir Singer
German - 1920's
Fine Condition
Estimate: \$200 - \$300



Lot 31
Begging Girl
German - 1920's
Excellent Condition
Estimate: \$700 - \$900



Lot 32
Dutch Girl
German - 1930's
Very Fine Condition
Estimate: \$175 - \$225

This is a colorful and scarce spelter bank.



Lot 33
**Canadian Beaver
on a Ball**
German - 1930's
Fine Condition
Estimate: \$175 - \$225



Lot 34
Bavarian Man with Pipe
German - 1920's
Excellent Condition
Estimate: \$400 - \$500



Lot 35
**Bear with Top Hat and Cane
on a Tree Stump**
German - 1920's
Excellent Plus Condition
Estimate: \$500 - \$700

This is a scarce German spelter bank.



Lot 36
Lot of Two Porcelain Banks -
 Infant Sucking on the Dog's Tail and
 Boy Stealing a Glass of Beer from Vat
 Probably German - Circa 1890
 Both are Pristine Condition
 Estimate: \$250 - \$350



Lot 37
Lot of Two Porcelain Banks -
 Dog Sleeping on a Crate and
 Playful Dog & Cat in a Blue Shoe
 Probably German - Circa 1900
 Both are Pristine Condition
 Estimate: \$150 - \$200



Lot 38
Lot of Two Porcelain Banks -
 Sleeping Recumbent Student and
 Comical Boy Stuck in a Barrel
 Probably German - Circa 1890
 Both are Pristine Condition
 Estimate: \$225 - \$275



Lot 39
Lot of Two Porcelain Banks -
 Man Seated on a Bag of Money and
 Woman with Two Geese in a Cage
 Probably German - Circa 1890
 Both are Excellent Plus Condition
 Estimate: \$225 - \$275



Lot 40
Lot of Three Porcelain Banks
 Probably Germany - Circa Early 1900's
 All are Pristine to Near Mint
 Estimate: \$175 - \$225



Lot 41
Lot of Two Porcelain Banks -
 Baby Seated on Her Potty
 and Girl in her Ivory Tower
 Probably German - Circa 1900
 Both are Excellent Condition
 Estimate: \$100 - \$150



Lot 42
Lot of Two Porcelain Banks -
 Tan Rabbits and Hen plus
 Cats Standing by their House
 Probably German - Circa 1910
 Both are Near Mint Condition
 Estimate: \$100 - \$150



Lot 43
Baby Elephant Seated for his Supper
 Very Scarce Porcelain Still Bank
 Probably German - Circa 1910
 Pristine Condition
 Estimate: \$125 - \$175



Lot 44
Two Rustic Ceramic Hen Banks
 Probably French - Circa 1900
 Both are Excellent Condition
 Estimate: \$50 - \$75



Lot 45
Green Ceramic Rabbit Bank
Probably French - Circa 1910
Pristine Condition
Estimate: \$75 - \$125



Lot 46
Ceramic Pomegranate Bank
Probably French - Circa 1920
Excellent Condition
Estimate: \$75 - \$125



Lot 47
Ceramic Squirrel with Nut Bank
Probably French - Circa 1920
Near Mint Condition
Estimate: \$75 - \$125



Lot 48
Green Noah's Ark Still Bank
European - Circa Early 1900's
Pristine Condition
Estimate: \$50 - \$75



Lot 49
Unusual Gypsy Caravan Bank
Probably French - Circa 1920
Near Mint Condition
Estimate: \$50 - \$75



Lot 50
Ceramic Locomotive Still Bank
European - Circa Early 1900's
Pristine Condition
Estimate: \$50 - \$75



Lot 51
Unusual Souvenir Barrel Bank
Unknown American Maker - 1910
Excellent Condition
Estimate: \$50 - \$75



Lot 52
Two Polychrome Ceramic Barrel Banks
Probably Pennsylvania - Circa 1890
Both are Excellent Condition
Estimate: \$75 - \$125



Lot 53
Rare Reverse Ovoid Form Bank
Pennsylvania Redware - Ca. 1875
Excellent Condition
Estimate: \$75 - \$125



Lot 54
Amusing Ceramic Head Bank
 Austrian - Circa Early 1900's - 3" T
 Pristine Condition
 Estimate: \$75 - \$125



Lot 55
Bisque Baby in Cradle Still Bank
 Scarce Example with Human Hair
 European - Circa Early 1900's - 3" L
 Pristine Condition
 Estimate: \$250 - \$350



Lot 56
Amusing Ceramic Head Bank
 Three Faces
 Austrian - Circa Early 1900's - 3" T
 Excellent Condition
 Estimate: \$100 - \$150



Lot 57
Collection of Five Ceramic Head Banks
 Three Infant Children + Two Older Men
 Probably made by Bernhard Bloch
 Austrian - Circa Early 1900's - 2 7/8" to 3 1/4" T
 Excellent to Pristine Condition
 Estimate: \$350 - \$450



Lot 58
Scarce Ceramic Doctor Bank
With Glasses Above His Eyes
 Bernhard Bloch - Austria - 1910 - 3" T
 Excellent Condition
 Estimate: \$100 - \$150



Lot 59
Ceramic Pixie Boy with Hat
and Unusual Wood Bust Bank
 Bernhard Bloch - Austria - 1910
 Both are Excellent Condition
 Estimate: \$125 - \$175



Lot 60
Ceramic Bust Still Bank Depicting a
Bearded Bavarian Man Smoking his Pipe
 Bernhard Bloch - Austria - Circa 1910
 Excellent Condition
 Estimate: \$150 - \$200



Lot 61

Unusual Ceramic Acorn Bank

Unknown American Maker - Circa 1920 - 4" T
Pristine Condition
Estimate: \$75 - \$125



Lot 62

Scarce Nest with Eggs Bank

American - Circa 1910 - 3 1/2" D
Pristine Condition
Estimate: \$75 - \$100



Lot 63

Unusual Ceramic Ear of Corn

American - Circa 1910 - 3 1/4" T
Excellent Condition
Estimate: \$75 - \$125



Lot 64

**Decorated Ovoid Form
Ceramic Bank**

Unknown American Maker - Circa 1880 - 4" T
Pristine Plus with Outstanding Color
Estimate: \$75 - \$125



Lot 65

**Fancy Decorated
Ceramic Apple Bank**

Unknown American Maker - Circa 1880 - 2 1/2" T
Near Mint with Beautiful Muted Color
Estimate: \$75 - \$125



Lot 66

**Decorated Ceramic
Barrel Bank**

Unknown American Maker - Circa 1890 - 4" T
Pristine Condition
Estimate: \$50 - \$75



Lot 67

Two Ceramic Apple Still Banks

Unknown American Maker - Circa 1900
Both are Excellent Plus Condition
Estimate: \$50 - \$75



Lot 68

Two Ceramic Jug Form Still Banks

Unknown American Maker - Circa 1900
Both are Pristine Condition
Estimate: \$75 - \$125



Lot 69

Two Ceramic Apple Still Banks

Unknown American Maker - Circa 1900
Both are Pristine and Colorful
Estimate: \$50 - \$75



Lot 70
Scarce Brownish Globe
 Ohio Art Company
 American - 1960's - 5" Tall
 Near Mint Condition
 Estimate: \$75 - \$100



Lot 71
Two Ovoid Tin Banks
 American - 1930's - 4" Long
 Excellent Plus Condition
 Estimate: \$75 - \$125



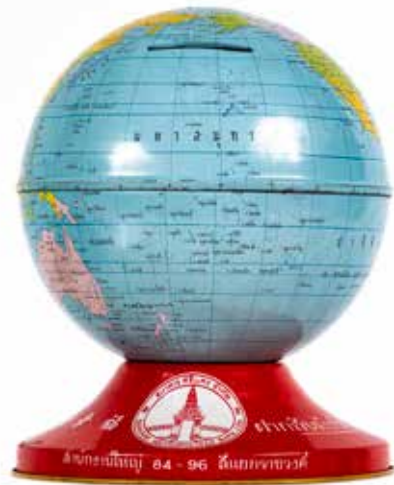
Lot 72
Sun Dial Safe
 American - 1930's - 4 1/2" Tall
 Very Fine Condition
 Estimate: \$40 - \$60



Lot 73
Mission Themed Globe Bank
 Golden Rule Foundation
 American - 1960's - 5" Tall
 Excellent Plus Condition
 Estimate: \$75 - \$100



Lot 74
Globe with Chevrolet Advertising
 Made by J. Chein
 Newark, NJ - 1930's - 4 1/4" Tall
 Pristine Condition
 Estimate: \$150 - \$200



Lot 75
Bangkok Metropolitan Bank Globe
 Probably Japanese - 1960's - 5 1/4" Tall
 Pristine Condition
 Estimate: \$75 - \$100



Lot 76
Two Globes
 Japanese - 1960's - 2 3/4" Tall
 Pristine Condition
 Estimate: \$50 - \$75



Lot 77
Two Globes
 American & West German - 1920/40's
 3" and 4 1/4" Tall
 Pristine Condition
 Estimate: \$125 - \$175



Lot 78
Three Baseball Banks
 American & Japanese - 1960's
 2 3/4" and 4" Tall
 Pristine Condition
 Estimate: \$75 - \$100



Lot 79
Captain Marvel - Gray Background
 American - 1940's
 Pristine Condition
 Estimate: \$150 - \$200



Lot 80
Coke Dime Register
 American - 1940's
 Pristine Condition
 Estimate: \$600 - \$800



Lot 81
Prince Valiant - Gray Uniform
 American - 1940's
 Pristine Condition
 Estimate: \$75 - \$100



Lot 82
Mantle Clock
 German - 1930's - 4" Tall
 Pristine Condition
 Estimate: \$100 - \$150



Lot 83
Alarm Clock - Oval with Bell
 Trap with Key
 German - 1930's - 4 1/4" Tall
 Pristine Condition
 Estimate: \$100 - \$150



Lot 84
Alarm Clock - Square
 Trap with Key
 German - 1930's - 3" Tall
 Pristine Condition
 Estimate: \$75 - \$100



Lot 85
"Keep 'Em Flying" Dime Register
 American - 1930's
 Excellent Plus Condition
 Estimate: \$225 - \$275



Lot 86
"Keep 'Em Rolling" Dime Register
 American - 1930's
 Excellent Plus Condition
 Estimate: \$225 - \$275



Lot 87
"Keep 'Em Sailing" Dime Register
 Black Ship Version
 American - 1930's
 Excellent Plus Condition
 Estimate: \$225 - \$275



Lot 88

Four Book Banks
Two Sheet Steel & Two Tin
American - 1930/40's
Excellent Condition
Estimate: \$50 - \$75



Lot 89

Cottage & Underwood Typewriter
American - 1930/40's
Excellent Plus Condition
Estimate: \$60 - \$90



Lot 90

Four Book Banks
American - 1930/40's
Pristine Condition
Estimate: \$75 - \$125

Included are Mickey Mouse, Pioneer Savings, Western Savings & Wild West Strong Box.



Lot 91

Lincoln Bank

Penn Mfg. Co.
Oakland, CA - 1950's - 8" Long
Mint in Box
Estimate: \$150 - \$200



Lot 92

Two Cash Registering Banks
American - 1930/50 - 3" to 4" Tall
Pristine with Boxes
(One Box Missing Lid)
Estimate: \$75 - \$100



Lot 93

The Home (5 Coin) Savings Bank
American - 1920's - 6 1/4" Tall
Excellent Plus Condition
Estimate: \$75 - \$125



Lot 94

George Washington Cash Register
American - 1930 - 4 1/4" Tall
Excellent Plus Condition
Estimate: \$75 - \$100



Lot 95
Buddy Bank
 Louis Marx Co.
 New York - 1930's - 3 1/2" Tall
 Excellent Plus Condition
 Estimate: \$100 - \$150



Lot 96
Germanic Church
 German - 1920's - 4 1/4" Tall
 Excellent Condition
 Estimate: \$150 - \$200



Lot 97
Singer Sewing Machine
 German - 1930's - 4" Wide
 Excellent Condition
 Estimate: \$150 - \$200



Lot 98
Yellow Cab Bank
 Battery Operated
 Made by Ichiko
 Japanese - Late 1950's - 8" L
 Excellent Condition
 Estimate: \$200 - \$300
 We did not test with batteries.



Lot 99
Two Radio Banks
 German - 1930's - 4" to 4 1/2" T
 Very Fine to Excellent Condition
 (One missing locking mechanism)
 Estimate: \$75 - \$125



Lot 100
Jitney Bank
 American - 1930's - 4 1/4" Tall
 Excellent Condition
 Estimate: \$175 - \$225



Lot 101
Two Cute Vending Banks
 U. S. Zone Germany - Late 1940's - 6 1/4" Tall
 Excellent Plus Condition
 Estimate: \$175 - \$225



Lot 102
Grey Elephant
 Hubley Mfg. Co.
 Lancaster, PA - 1920
 Excellent Plus Condition
 Estimate: \$60 - \$90



Lot 103
Three Wise Monkeys
 American - 1920's
 Very Fine Condition
 Estimate: \$100 - \$150



Lot 104
Elephant Swings Trunk - Small
 A. C. Williams Co.
 Ravenna, OH - 1910
 Near Mint Condition
 Estimate: \$100 - \$150



Lot 105
**Horse & Elephant on
 Wheeled Platform**
 A. C. Williams Co.
 Ravenna, OH - 1915
 Very Fine Condition
 Estimate: \$250 - \$350



Lot 106
Frog and Turtle Match Safes
 For the Garland Store Co.
 American - 1910 - 3 3/4" x 1 5/8" L
 Very Fine Condition
 Estimate: \$250 - \$350



Lot 107
Two Pig Banks
 American - 1920 - 4 7/8" L
 Ex - William Werbell Collection
 Very Fine to Excellent Condition
 Estimate: \$225 - \$275
 One is a scarce nickel-plated example.



Lot 108
Two Horse Banks
 American - 1920's
 Excellent Plus Condition
 Estimate: \$175 - \$225



Lot 109
Lion - Small
 Arcade Mfg. Co.
 Freeport, IL - 1915
 Excellent Plus Condition
 Estimate: \$60 - \$90



Lot 110
**Horse with Flynet
 & Teddy Bear**
 American - 1915
 Ex - William Werbell Collection
 Good to Very Fine Condition
 Estimate: \$200 - \$250



Lot 111
Standing Boxer Still Bank
 Made by Hubley Mfg. Company
 Lancaster, Pa. - Early 1930's
 Ex - William Werbell Collection
 Excellent Condition
 Estimate: \$75 - \$100



Lot 112
Black & White Seated Saniel
 Made by Hubley Mfg. Company
 Lancaster, Pa. - Early 1930's
 Pristine Plus Condition
 Estimate: \$125 - \$175



Lot 113
Seated Scottish Still Bank
 Made by Hubley Mfg. Company
 Lancaster, Pa. - Early 1930's
 Pristine Condition
 Estimate: \$100 - \$150



Lot 114
Two Kids Still Bank
 Made by James Harper Company
 Chicago, Illinois - Circa Early 1900's
 Ex - Alvin Goldstein Collection
 Fine Condition
 Estimate: \$250 - \$350



Lot 115
Rocking Oriental Camel Bank
 Made by James Harper Company
 Chicago, Illinois - Circa Early 1900's
 Ex - Alvin Goldstein Collection
 Excellent Condition
 Estimate: \$300 - \$400



Lot 116
Save For a Rainy Day Duck
 Made by Hubley Mfg. Company
 Lancaster, Pa. - Early 1930's
 Ex - William Werbell Collection
 Pristine Plus Condition
 Estimate: \$100 - \$150



Lot 117
Thrifty the Wise Pig Bank
 Made by Hubley Mfg. Company
 Lancaster, Pa. - Early 1930's
 Near Mint & Very Bright
 Estimate: \$100 - \$150



Lot 118
Circus Elephant Still Bank
 Made by Hubley Mfg. Company
 Lancaster, Pa. - Early 1930's
 Near Mint with Few Chips
 Estimate: \$150 - \$200



Lot 119
Small - Two-Faced Boy Bank
 Made by A. C. Williams Company
 Ravenna, Ohio - Circa Mid 1920's
 Very Good Condition
 Estimate: \$50 - \$75



Lot 120
Dutch Girl with Flowers & Amish Boy
 Made by Hubley Mfg. Company
 Lancaster, Pa. - Early 1930's
 Pristine Plus Condition
 Estimate: \$100 - \$150



Lot 121
Black Bust Still Bank
 American Maker - 1930's
 Excellent Plus Condition
 Estimate: \$75 - \$100



Lot 122
Scarce Billiken on Throne Bank
 Made by A. C. Williams Company
 Ravenna, Ohio - Circa 1909
 Ex - William Werbell Collection
 Fine Condition
 Estimate: \$175 - \$225



Lot 123
Campbell Kids Still Bank
 Made by A. C. Williams Company
 Ravenna, Ohio - Circa Mid 1920's
 Excellent Condition
 Estimate: \$100 - \$150



Lot 124
Rare King Midas Bank
 Made by Hubley Mfg. Company
 Lancaster, Pa. - Circa 1930's
 Ex - Alvin Goldstein Collection
 Very Good Condition
 Estimate: \$350 - \$450



Lot 125
Dutch Boy Still Bank
 By the Grey Iron Casting Company
 Mount Joy, Pennsylvania - Mid 1920's
 Ex - Alvin Goldstein Collection
 Excellent Plus Condition
 Estimate: \$150 - \$200



Lot 126
Save & Smile Hanging Santa Bank
 Made by J. Harper Ltd. Company
 Great Britain - Circa Mid 1920's
 Ex - Alvin Goldstein Collection
 Excellent Plus Condition
 Estimate: \$350 - \$450



Lot 127
Dutch Girl Still Bank
 Made by the Grey Iron Casting Company
 Mount Joy, Pennsylvania - Mid 1920's
 Ex - Alvin Goldstein Collection
 Excellent Plus Condition
 Estimate: \$150 - \$200



Lot 128
Mammy with Hands on Hips

Made by Hubley Mfg. Company
Lancaster, Pa. - Circa 1930's
Pristine Plus Condition
Estimate: \$100 - \$150



Lot 129
Mulligan the Cop Bank

Made by Hubley Mfg. Company
Lancaster, Pa. - Circa 1920
Excellent Plus Condition
Estimate: \$150 - \$200



Lot 130
Mammy Holding Spatula

Made by Hubley Mfg. Company
Lancaster, Pa. - Circa 1920
Excellent Plus Condition
Estimate: \$125 - \$175



Lot 131
Indian with Tomahawk

Made by Hubley Mfg. Company
Lancaster, Pa. - Circa Mid 1920's
Ex - Alvin Goldstein Collection
Pristine Condition
Estimate: \$225 - \$275



Lot 132
Clown with Crooked Hat

Made by the Ober Mfg. Company
Chagrin Falls, Ohio - Circa 1910
Excellent Plus Condition
Estimate: \$550 - \$750



Lot 133
Minuteman or Soldier Bank

Made by Hubley Mfg. Company
Lancaster, Pa. - Circa Mid 1920's
Ex - Alvin Goldstein Collection
Excellent Plus Condition
Estimate: \$225 - \$275



Lot 134
Share Cropper Still Bank

By the A. C. Williams Company
Ravenna, Ohio - Circa Mid 1920's
Excellent Plus Condition
Estimate: \$75 - \$125



Lot 135
Golliwog on Circular Base

Unknown English Manufacturer
Probably J. Harper Ltd. - 1900's
Pristine Condition
Estimate: \$350 - \$450



Lot 136
Give Me a Penny (Screw)

Made by Hubley Mfg. Company
Lancaster, Pa. - Circa Mid 1910's
Excellent Plus Condition
Estimate: \$150 - \$200



Lot 137

Tammany Bank

Made by J. & E. Stevens Company
Cromwell, Ct. - 1873
Very Fine Condition
Estimate: \$400 - \$600

Lot 138

South African Hunter

Paul Kruger
German - 1895 - 6 3/4" Tall
Excellent Plus Condition
Estimate: \$2500 - \$3500

This is an extremely rare German Spelter bank, perhaps the only one known. It is the book example (#664, pg 194) in "Painted German Spelter Banks" by Robert and Shirley Peirce.



Lot 139

General Pershing

Scarce Electroplated Version
Made by Grey Iron Casting Company
Mount Joy, Pa. - Circa 1918
Near Mint Condition
Estimate: \$175 - \$225

Lot 140

General Pershing

Rare Multicolor Version
Made by Grey Iron Casting Company
Mount Joy, Pa. - Circa 1918
Pristine Condition
Estimate: \$700 - \$900

To our knowledge only a handful of examples are painted in this manner.





Lot 141
Tammany Tiger Bust Bank
 Very Scarce Brass Specimen
 Unknown American Manufacturer
 Produced and Sold Circa Late 1870's
 Pristine with Outstanding Patina
 Estimate: \$2500 - \$3500

This represents an exceedingly scarce and desirable portrait of the notorious embezzler and corrupt politicians Boss Tweed.



Lot 142
Rare Egg Man Still Bank
 Caricature of Wm. H. Taft
 Made by Ober Mfg. Company
 Chagrin Falls, Ohio - Circa 1905
 Ex - Alvin Goldstein Collection
 Very Good Condition
 Estimate: \$750 - \$950

Political cartoonists often portrayed Taft's heavy set body type as a huge swollen egg, one that could easily crack given the enormous pressures of the presidency.



Lot 143
Peaceful Bill and Friendly John
 Extremely Rare Political Still Bank
 By the James Harper Company
 Chicago, Illinois - Circa 1908
 Structurally Great (Old Repaint)
 Estimate: \$2500 - \$3500

At this time, we know of only one other example of this fascinating political bank. It depicts the 1908 Democratic nominees Wm. Jennings Bryan and John Kern. Some of the original silver and copper color paint can be seen under the repaint.



Lot 144
Lincoln High Hat Bank
 "Pass Around the Hat"
 American - Circa 1880
 Excellent Plus Condition
 Estimate: \$75 - \$100



Lot 145
The Pingree Potato Bank
 American Made - Circa 1893
 Pristine Ebony Black Finish
 Estimate: \$950 - \$1250

Known as "Potato Patch Pingree", Hazen Pingree was a four time mayor of Detroit, who allowed communal farming on open city lots after the nationwide financial Panic of 1893.



Lot 146
The Transvaal Money Box
 South African President Paul Kruger
 Made by John Harper Ltd. Company
 Willenhall, England - Circa 1880
 Ex - Alvin Goldstein Collection
 Very Good Condition
 Estimate: \$1200 - \$1500

The deluxe polychrome version of the Transvaal Money Box is exceedingly scarce. It's considered one of the true "holy grails" in the hobby.

Lot 147
General Butler Bank
 By J. & E. Stevens Company
 Cromwell, Ct. - Circa 1880
 Ex - Alvin Goldstein Collection
 Very Good Condition
 Estimate: \$900 - \$1200

Union General Benjamin Butler is satirized as a disembodied human head on the body of a frog because of his involvement in the Greenback Currency Scandal.





Lot 148
Two Still Banks

American - 1920's
Fine to Pristine Condition
Estimate: \$75 - \$100

The U. S. Mail is missing its circular trap.



Lot 149
U. S. Mail Bank

Hubley Mfg. Co.
Lancaster, Pa. - Circa 1920 - 3 3/8" T
Ex - William Werbell Collection
Pristine Condition
Estimate: \$75 - \$100



Lot 150
Two U. S. Mail Banks

Hubley Mfg. Co.
Lancaster, Pa. - Circa 1920 - 3 3/3" - 3 3/4" T
Ex - William Werbell Collection
Pristine Condition
Estimate: \$100 - \$150



Lot 151
U. S. Mail Bank - Largest

Hubley Mfg. Co.
Lancaster, Pa. - Circa 1920 - 6 3/4" Tall
Ex - William Werbell Collection
Excellent Plus Condition
(Needs a Cleaning)
Estimate: \$125 - \$175



Lot 152
Boston Bean Pot

American - 1895 - 4" W
Ex - William Werbell Collection
Very Fine Condition
Estimate: \$100 - \$150



Lot 153
Crosley Radio - Small

Kenton Hardware
Kenton, OH - Circa 1930 - 4 3/8" T
Excellent Condition
Estimate: \$125 - \$175



Lot 154

Ice Cream Freezer

"Save Your Money"
 Grey Iron Casting Company
 Mount Joy, Pa. - Circa 1925 - 4 1/4" T
 Near Mint Condition
 Estimate: \$225 - \$275



Lot 155

Two White City #2

Puzzle Saving Banks
 Nicol & Company
 Chicago, IL - Circa 1893 - 2 5/8" T
 Ex - Alvin Goldstein Collection
 Excellent Plus Condition
 Estimate: \$125 - \$175

Nickel example missing it's handle.



Lot 156

Ice Cream Freezer

"Richmond Cedar"
 Grey Iron Casting Company
 Mount Joy, Pa. - Circa 1925 - 4 1/4" T
 Ex - Alvin Goldstein Collection
 Excellent Condition
 Estimate: \$175 - \$225



Lot 157

Gas Stove

Bernstein Company
 New York City - 1901 - 5 1/2" T
 Excellent Plus Condition
 Estimate: \$100 - \$150



Lot 158

Fire Alarm

Japanese - 1940's - 4 1/4" T
 Ex - Alvin Goldstein Collection
 Excellent Condition
 Estimate: \$100 - \$150



Lot 159

Fidelity Trust Vault

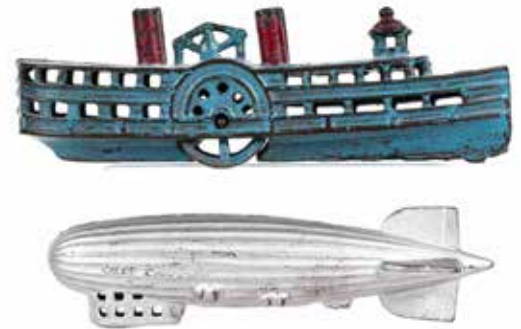
Small Version
 J. Barton Smith
 Philadelphia - 1890 - 5" Tall
 Ex - Alvin Goldstein Collection
 Excellent Condition
 (Missing Paper Dial)
 Estimate: \$150 - \$200



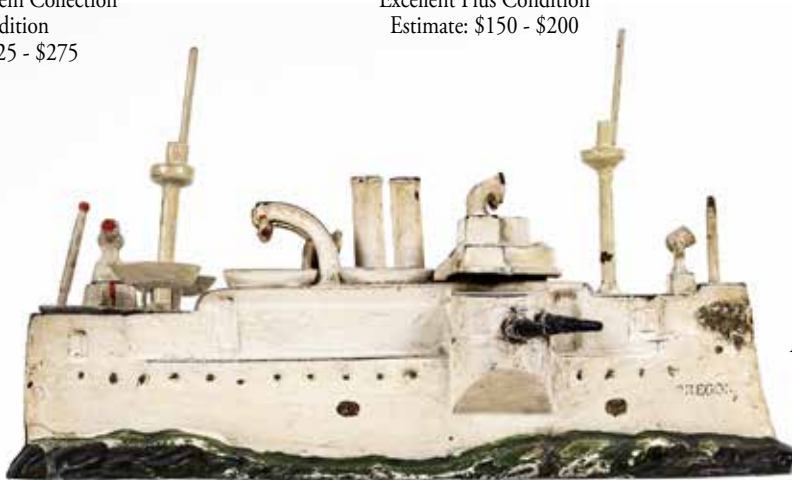
Lot 160
Two Battleship Maines
 Small Size
 Grey Iron Casting Company
 Mount Joy, PA. - 1900 - 4 1/2" L
 Ex - Alvin Goldstein Collection
 Fine Condition
 Estimate: \$225 - \$275



Lot 161
Battleship Oregon
 Small Size
 J. & E. Stevens Company
 Cromwell, Ct. - 1901 - 5 1/8" L
 Excellent Plus Condition
 Estimate: \$150 - \$200



Lot 162
Riverboat & Zeppelin
 American - 1910/20's - 6 1/2" / 7 1/2" L
 Excellent to Pristine Condition
 Estimate: \$150 - \$200



Lot 163
Battleship Oregon
 J. & E. Stevens Company
 Cromwell, Ct. - 1901 - 10" Long
 Ex - Alvin Goldstein Collection
 Very Fine Overall
 Estimate: \$550 - \$750
 About 10% of the boat has been repainted.
 Mostly to or near the masts.



Lot 164
Statue of Liberty
 Small Size
 Kenton Hardware Company
 Kenton, Oh. - 1915 - 6 1/8" T
 Excellent Plus Condition
 Estimate: \$75 - \$100



Lot 165
Statue of Liberty - Blue
 Mid Size
 Kenton Hardware Company
 Kenton, Oh. - 1915 - 6 3/8" T
 Excellent Condition
 Estimate: \$225 - \$275



Lot 166
Statue of Liberty
 Large Size
 Kenton Hardware Company
 Kenton, Oh. - 1915 - 7 1/2" T
 Excellent Condition
 Estimate: \$300 - \$400



Lot 167
Spelter Convertible
German - 1915 - 5" L
Excellent Plus
Estimate: \$125 - \$175



Lot 168
Spelter Race Car
Inkwell
German - 1910 - 5 1/4" L
Pristine Condition
(Missing the Inkwell)
Estimate: \$350 - \$450



Lot 169
Trolley
Grey Iron Casting Company
Mount Joy, Pa. - 1895 - 4 5/8" L
Excellent Plus Condition
Estimate: \$250 - \$350



Lot 170
**Train Engine Bank
and Cigar Cutter**
Probably Lutz or Ernst Planck
German - Circa 1880 - 10 1/2" L x 6 3/8" T
Excellent Plus Condition
Estimate: \$1500 - \$2000

We have only seen one other example of this rare, early, German bank. Made of sheet tin mounted to a rectangular wooden base.



Lot 171
Columbian Exposition Globe
Bank & Souvenir
American - Dated 1893 - 4 1/2" Tall
Ex - Alvin Goldstein Collection
Pristine Condition
Estimate: \$700 - \$900

Lot 172
Model T Ford Bank
Type I
Arcade - 1925 - 6 1/4" L
Excellent Plus Condition
Estimate: \$550 - \$750





Lot 173
The Roller Safe
 Kyser & Rex
 Philadelphia - 1882 - 3 5/8" T
 Near Mint Condition
 Estimate: \$100 - \$150



Lot 174
Animal Safe
 Kyser & Rex
 Philadelphia - 1882 - 3" T
 Pristine Condition
 Estimate: \$125 - \$175



Lot 175
Young America Safe
 Kyser & Rex
 Philadelphia - 1882 - 4 3/8" T
 Near Mint Condition
 Estimate: \$150 - \$200



Lot 176
Stenciled Door with
 Central Knob
 J. & E. Stevens Company
 Cromwell, Ct. - 1885 - 4 1/4" T
 Excellent Plus Condition
 Estimate: \$200 - \$250



Lot 177
New York Safe
 J. & E. Stevens Company
 Cromwell, Ct. - 1875 - 4 1/4" Tall
 Ex - William Werbell Collection
 Very Fine Condition
 Estimate: \$175 - \$225



Lot 178
Security Safe Deposit
 Kyser & Rex
 Philadelphia - 1885 - 4 1/2" T
 Excellent Condition
 Estimate: \$75 - \$125



Lot 179
Home Safe
 Grey Iron Casting Company
 Mount Joy, Pa. - 1905 - 3 1/4" T
 Excellent Condition
 Estimate: \$50 - \$75



Lot 180
Cupid Safe
 Kenton Hardware
 Kenton, Oh. - 1915 - 4 1/4" T
 Near Mint Condition
 Estimate: \$75 - \$100



Lot 181
Hexagon Door Safe
 Klotz Mfg. Co.
 American - 1915 - 3 3/4" T
 Ex - William Werbell Collection
 Excellent Condition
 Estimate: \$75 - \$100



OPEN BANK
 Guard is straight
 across the door with
 your key, lock
 cannot be opened
 without the key
 No. 3
 When lock is in
 the left and right of
 No. 4

Lot 182
National Safe
 Grey Iron Casting Company
 Mount Joy, Pa. - 1920 - 4 3/4" T
 Pristine Condition
 (With Operating Tag)
 Estimate: \$75 - \$100



Lot 183
Four Posted Safe
 Grey Iron Casting Company
 Mount Joy, Pa. - 1920 - 5" Tall
 Pristine Condition
 Estimate: \$175 - \$225



Lot 184
National Safe
 Comstock & Wing
 American - 1890 - 4 3/4" Tall
 Ex - William Werbell Collection
 Excellent Condition
 Estimate: \$175 - \$225



Lot 185
Coin Deposit Bank
 Grey Iron Casting Company
 Mount Joy, Pa. - 1915 - 5 5/8" T
 Near Mint Condition
 Estimate: \$75 - \$125



Lot 186
The Home Savings Bank
 Kenton Hardware
 Kenton, Oh. - 1900 - 5 3/8" T
 Pristine Condition
 Estimate: \$150 - \$200



Lot 187
Idea Security
 Ideal Mfg. Co.
 American - 1900 - 5 1/2" T
 Excellent Plus Condition
 Estimate: \$100 - \$150



Lot 188
Security Safe Deposit
 Kyser & Rex
 Philadelphia - 1885 - 4 3/4" T
 Excellent Condition
 Estimate: \$75 - \$125



Lot 189
Arched Door Safe
 with T Handle
 Kyser & Rex
 Philadelphia - 1885 - 5 3/8" T
 Ex - William Werbell Collection
 Very Fine Condition
 Estimate: \$250 - \$350



Lot 190
Safe Deposit
 Henry Hart Mfg.
 Detroit, Mi. - 1890 - 5 1/4" T
 Pristine Condition
 Estimate: \$200 - \$250



Lot 191
The Keyless Safe Deposit
 Keyless Lock Company
 American - 1900 - 5 7/8" T
 Ex - William Werbell Collection
 Excellent Condition
 Estimate: \$125 - \$175



Lot 192
Fidelity Trust Vault
 J. Barton Smith
 Philadelphia - 1890
 Excellent Condition
 Estimate: \$250 - \$350



Lot 193
Bank of Commerce
 Kenton Hardware Company
 Kenton, Ohio - 1915 - 6 5/8" T
 Very Fine Condition
 (Lacking part of lock mechanism)
 Estimate: \$125 - \$175



Lot 194

U. S. Army & Navy Combo Safe

Kenton Hardware
 Kenton, Oh. - 1905 - 6 1/8" T
 Scarce Electroplated VErision
 Pristine Condition
 Estimate: \$500 - \$700

A very scarce safe. It needs a minor repair to lock the doors.



Lot 195

Ansonia Clock Safe Bank

The Ansonia Clock Company
 New York - 1905 - 8 1/2" Tall
 Ex - William Werbell Collection
 Excellent Condition
 Estimate: \$400 - \$600

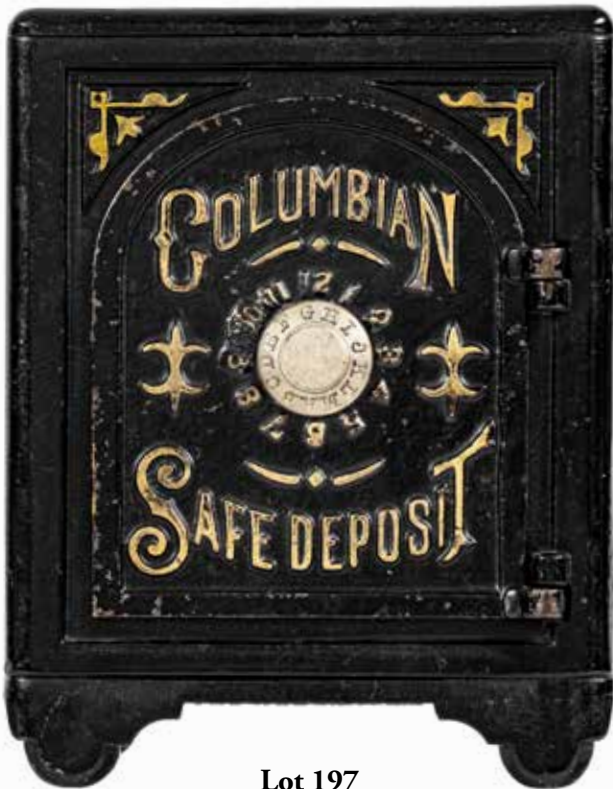
We have not seen this bank before.



Lot 196

Floral Safe

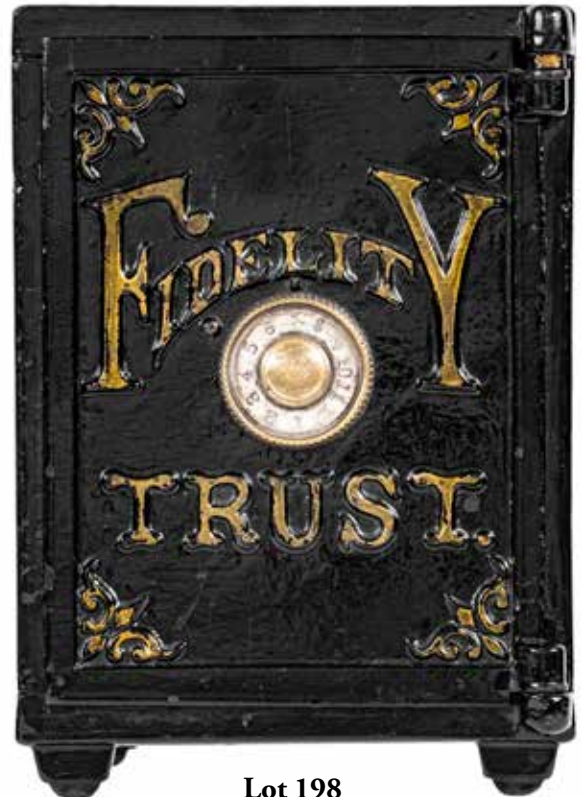
J. & E. Stevens Company
 Cromwell, Ct. - 1897 - 4 5/8" T
 Ex - William Werbell Collection
 Very Fine Condition
 Estimate: \$150 - \$200



Lot 197

Columbian Safe

Kyser & Rex
 Philadelphia - 1885 - 6 1/2" T
 Ex - William Werbell Collection
 Pristine Condition
 Estimate: \$400 - \$600



Lot 198

Fidelity Trust Home Safe

(Not a Still Bank)
 Henry Hart Company
 Detroit, Mi. - 1885 - 8 1/2" T
 Pristine Condition
 Estimate: \$300 - \$400



Lot 199
Our Kitchener
 Sydenham & McOustra
 English - 1910 - 6 3/4" T
 Excellent Condition
 Estimate: \$100 - \$150



Lot 200
Royal Bank
 Sydenham & McOustra
 English - 1910 - 5 1/2" T
 Excellent Condition
 Estimate: \$100 - \$150



Lot 201
Our Empire Bank
 Sydenham & McOustra
 English - 1910 - 6 3/4" T
 Excellent Plus Condition
 (Two base chips)
 Estimate: \$100 - \$150



Lot 202
Westminster Abbey - Blunted Spires
 Sydenham & McOustra
 English - 1910 - 6 1/4" T
 Pristine Condition
 Estimate: \$150 - \$200



Lot 203
Dreadnought Bank
 Sydenham & McOustra
 English - 1910 - 7" T
 Excellent Plus Condition
 Estimate: \$250 - \$350



Lot 204
Westminster Abbey - Spiked Spires
 Sydenham & McOustra
 English - 1910 - 6 3/8" T
 Pristine Condition
 Estimate: \$150 - \$200



Lot 205
Rare Cupids & Putti Space Heater
 Probably J. M. Harper Company
 Great Britain - Circa Early 1900's
 Ex - Alvin Goldstein Collection
 Outstanding Japanned Finish
 Estimate: \$300 - \$400



Lot 206
Bears Stealing Honey Bank
 By Sydenham & McOustra
 Great Britain - Circa Early 1910's
 Ex - Alvin Goldstein Collection
 Excellent Plus Condition
 Estimate: \$125 - \$175



Lot 207
Scarce Beehive Space Heater Bank
 Probably J. M. Harper Company
 Great Britain - Circa Early 1900's
 Ex - Alvin Goldstein Collection
 Excellent - Nice Gold Highlights
 Estimate: \$200 - \$250



Lot 208
City Bank with Director's Room
 By Sydenham & McOustra
 Great Britain - Circa 1900
 Pristine Plus Condition
 Estimate: \$75 - \$125



Lot 209
The County Bank
 By Sydenham & McOustra
 Great Britain - Circa 1900
 Ex - Alvin Goldstein Collection
 Near Mint Ebony Finish
 Estimate: \$250 - \$350



Lot 210
Floral Urns Space Heater Bank
 Probably J. M. Harper Company
 Great Britain - Circa Early 1900's
 Ex - Alvin Goldstein Collection
 Excellent Condition
 Estimate: \$125 - \$175



Lot 211
Coronation Commemorative Bank
 Made by Sydenham & McOustra
 Great Britain - Produced in 1911
 Pristine Condition
 Estimate: \$125 - \$175



Lot 212
Birds Aviary Space Heater Bank
 Probably J. M. Harper Company
 Great Britain - Circa Early 1900's
 Ex - Alvin Goldstein Collection
 Excellent Japanned Finish
 Estimate: \$125 - \$175



Lot 213
Oriental Pavilion Bank
 By Kyser & Rex Company
 Philadelphia - Circa 1890
 Ex - Alvin Goldstein Collection
 Excellent - Strong Highlights
 Estimate: \$350 - \$450



Lot 214
Six-Sided House Bank
 By Kyser & Rex Company
 Philadelphia - Circa 1890
 Excellent Plus Condition
 Estimate: \$250 - \$350



Lot 215
Hexagonal Pavilion Bank
 By Kyser & Rex Company
 Philadelphia - Circa 1890
 Ex - Alvin Goldstein Collection
 Very Fine Condition
 Estimate: \$225 - \$275



Lot 216
Scarce Midget Bank
 English - Circa 1895
 Excellent Plus Condition
 Estimate: \$250 - \$350



Lot 217
Copper Colored Alamo Bank
 American Maker - Circa 1910
 Ex - Alvin Goldstein Collection
 Excellent Plus Condition
 Estimate: \$225 - \$275



Lot 218
Rare Cone Roofed Building
 By Kyser & Rex Company
 Philadelphia - Circa 1890
 Excellent - Good Highlights
 Estimate: \$400 - \$500



Lot 219
Tiny Sized State Bank
 Brown Japanned Finish
 American - Circa 1890
 Ex - Alvin Goldstein Collection
 Pristine Condition
 Estimate: \$175 - \$225



Lot 220
Scarce Tiny City Bank
 American - Circa 1890
 Excellent Plus Condition
 Estimate: \$225 - \$275



Lot 221
Tiny Sized State Bank
 Rare Ebony Black Finish
 American - Circa 1890
 Excellent Plus Condition
 Estimate: \$175 - \$225



Lot 222
Log Cabin Bank - Chimney Right
 Made by Kyser & Rex Company
 Philadelphia - Circa Mid 1890's
 Excellent Plus Condition
 Estimate: \$150 - \$250



Lot 223
Rose Window Church
 Scarce Example with Twist Pin
 Kyser & Rex Company - 1890's
 Pristine Condition
 Estimate: \$175 - \$225



Lot 224
Log Cabin Bank - Chimney Left
 Made by Kyser & Rex Company
 Philadelphia - Circa Mid 1890's
 Excellent Plus Condition
 Estimate: \$150 - \$250



Lot 225
Iron Masters Cottage Bank
 Made by the Kyser & Rex Company
 Philadelphia - Circa Late 1880's
 Pristine with Terrific Patina
 Estimate: \$1750 - \$2250



Lot 226
Small Size State Bank
 American - Circa 1900
 Near Mint Condition
 Great Roof Decoration
 Estimate: \$125 - \$175



Lot 227
Round Fort Tower Bank
 American - Circa 1900
 Excellent Condition
 Estimate: \$150 - \$200



Lot 228
Flat-Top State Bank
 American - Circa 1895
 Pristine Condition
 Estimate: \$300 - \$400



Lot 229
Nicked Bungalow with Porch

By Grey Iron Casting Company
 Mount Joy, Pa. - Circa 1920
 Illustrated as #65-B in Peirce Book
 Ex - Alvin Goldstein Collection
 Pristine with Great Surface
 Estimate: \$250 - \$350



Lot 230
Cast Iron Pagoda Bank

Scarce Silver & Gold Finish
 Unknown English Manufacturer
 Produced & Sold Circa 1890
 Ex - Alvin Goldstein Collection
 Very Fine Condition
 Estimate: \$200 - \$275



Lot 231
West Side Presbyterian Church

Unknown American Manufacturer
 Produced & Sold Circa Late 1910's
 Ex - Alvin Goldstein Collection
 Excellent Plus Condition
 Estimate: \$200 - \$275



Lot 232
Second Largest High Rise Building

Exceptional Gold Highlighting
 By the Kenton Hardware Company
 Kenton, Ohio - Ca. 1910's - 5 1/2" T
 Pristine Condition
 Estimate: \$250 - \$350



Lot 233
Scarce Triangular Building

Made by Hubley Mfg. Company
 Lancaster, Pa. - Circa Early 1910's
 Excellent Condition
 Estimate: \$350 - \$450



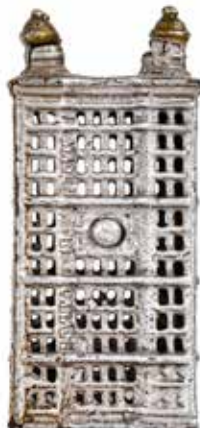
Lot 234
Large Tiered High Rise Building

By the Kenton Hardware Company
 Kenton, Ohio - Ca. 1910's - 5 7/8" T
 Excellent Plus Condition
 Estimate: \$250 - \$350



Lot 235
Two Skyscraper Buildings

Made by A. C. Williams Company
 Ravenna, Ohio - Early 1900's
 Pristine Condition
 Estimate: \$125 - \$175



Lot 236
"Made in Canada" Skyscraper

Unknown Maker - 1920 - 5 3/8" T
 Excellent Condition
 Estimate: \$250 - \$350



Lot 237
Large Six Turret Skyscraper

Made by the A. C. Williams Company
 Ravenna, Ohio - Early 1900's - 6 1/2" T
 Near Mint and Bright
 Estimate: \$150 - \$200



Lot 238
Scarce Town Hall Bank
 By Sydenham & McOustra
 Great Britain - Early 1900's
 Ex - Alvin Goldstein Collection
 Fine Condition
 Estimate: \$225 - \$275



Lot 239
Rare English Villa Bank
 By Sydenham & McOustra
 Great Britain - Early 1900's
 Excellent Plus Condition
 Estimate: \$300 - \$400



Lot 240
London Temple Bar Bank
 By Sydenham & McOustra
 Great Britain - Early 1900's
 Pristine Condition
 Estimate: \$400 - \$500



Lot 241
Litchfield Cathedral Bank
 Example with Pointed Spires
 By Sydenham & McOustra
 Great Britain - Early 1900's
 Ex - Alvin Goldstein Collection
 Pristine Jappaned Finish
 Estimate: \$225 - \$275



Lot 242
Litchfield Cathedral Bank
 Very Unusual Brass Example
 Unknown British Maker - 1910's
 Ex - Alvin Goldstein Collection
 Pristine Plus Condition
 Estimate: \$300 - \$400



Lot 243
Litchfield Cathedral Bank
 Example with Blunted Spires
 By Sydenham & McOustra
 Great Britain - Early 1900's
 Ex - Alvin Goldstein Collection
 Excellent Jappaned Finish
 Estimate: \$225 - \$275



Lot 244
Westminster Abbey Bank
 Conventional Sloped Backend
 By Sydenham & McOustra
 Great Britain - Early 1900's
 Ex - William Werbell Collection
 Pristine Condition
 Estimate: \$150 - \$200



Lot 245
Castle with Two Towers
 English - Circa 1890
 Pristine Condition
 Estimate: \$350 - \$450



Lot 246
Westminster Abbey Bank
 Rare Rectangular Base Shape
 Probably Sydenham & McOustra
 Great Britain - Early 1900's
 Excellent Condition
 Estimate: \$350 - \$450



Lot 247
Small Crown Bank Building

By J. & E. Stevens Company
Cromwell, Ct. - Circa 1890
Ex - Alvin Goldstein Collection
Very Good Condition
Estimate: \$100 - \$150



Lot 248
Polychrome Quadrafoil House

American - Circa Early 1900's
Excellent Plus Condition
Estimate: \$125 - \$175



Lot 249
Small Crown Bank Building

By J. & E. Stevens Company
Cromwell, Ct. - Circa 1890
Ex - Alvin Goldstein Collection
Excellent Condition
Estimate: \$175 - \$225



Lot 250
Hexagonal Pavilion Bank

By Kyser & Rex Company
Philadelphia - Circa 1890
Excellent Condition
Estimate: \$300 - \$400



Lot 251
House with Chimney Slot

Unknown American Maker
Excellent Plus Condition
Great Roof Stenciling
Estimate: \$550 - \$750



Lot 252
Yellow Church with Spires

By the Kyser & Rex Company
Philadelphia - Circa Late 1880's
Very Fine Paint
(Repaired Right Turret)
Estimate: \$300 - \$400



Lot 253
Small Cupola Still Bank

Finished in Primary Colors
By the J. & E. Stevens Company
Cromwell, Ct. - Circa Mid 1880's
Ex - Alvin Goldstein Collection
Excellent Condition
Estimate: \$125 - \$175



Lot 254
Small Cupola Still Bank

Finished in Tan, Red & White
By the J. & E. Stevens Company
Cromwell, Ct. - Circa Mid 1880's
Fine Paint
(Tiny cupola repair)
Estimate: \$75 - \$125



Lot 255
Small Cupola Still Bank

Finished in Patriotic Colors
By the J. & E. Stevens Company
Cromwell, Ct. - Circa Mid 1880's
Ex - Alvin Goldstein Collection
Pristine Condition
Estimate: \$175 - \$225



Lot 256
Medium Cupola Bank

White, Red and Green
 By the J. & E. Stevens Company
 Cromwell, Ct. - Circa Mid 1880's
 Very Fine Condition
 Estimate: \$125 - \$175



Lot 257
Large Cupola Bank

Tan, Brown and Green
 By the J. & E. Stevens Company
 Cromwell, Ct. - Circa Mid 1880's
 Very Fine Condition
 Estimate: \$225 - \$275



Lot 258
Medium Cupola Bank

Red, White and Blue
 By the J. & E. Stevens Company
 Cromwell, Ct. - Circa Mid 1880's
 Pristine with Superior Roof
 Estimate: \$225 - \$275



Lot 259
Tower Bank
 Made by Kyser & Rex Company
 Philadelphia - Dated 1890
 Excellent Overall
 (Minor repaint to front door)
 Estimate: \$800 - \$1000



Lot 260
Large Cupola Bank

Yellow, Red, Maroon and Blue
 By the J. & E. Stevens Company
 Cromwell, Ct. - Circa Mid 1880's
 Excellent with Great Roof
 Estimate: \$250 - \$350



Lot 261
Large Cupola Bank

Christmas Red, White and Green
 By the J. & E. Stevens Company
 Cromwell, Ct. - Circa Mid 1880's
 Excellent with Unusual Details
 Estimate: \$300 - \$400



Lot 262
Large Cupola Bank

Burgundy, White, Green and Red
 By the J. & E. Stevens Company
 Cromwell, Ct. - Circa Mid 1880's
 Ex - Alvin Goldstein Collection
 Very Fine Condition
 Estimate: \$225 - \$275



Lot 263

Japanned State Bank with

Solid Door & Straight Letters
By Kenton Hardware Company
Kenton, Oh. - 1895 - 5 3/4" T
Pristine - Exceptional Highlights
Estimate: \$125 - \$175



Lot 264

Ebony Black State Bank with

Solid Door & Straight Letters
By Grey Iron Casting Company
Mount Joy, Pa. - 1895 - 5 1/4" T
Pristine Plus Condition
Estimate: \$175 - \$225



Lot 265

BANK in Eccentric Script

By Grey Iron Casting Company
Mount Joy, Pa. - Circa 1895
Ex - Alvin Goldstein Collection
Near Mint - Superior Highlights
Estimate: \$175 - \$225



Lot 266

City Bank with Paying Teller

Copper Plated with Green Wash
Made by the H. L. Judd Company
Wallingford, Ct. - Circa Mid 1890's
Excellent Plus and Very Shiny
Estimate: \$225 - \$275



Lot 267

Ebony Black Home Bank

Made by the H. L. Judd Company
Wallingford, Ct. - Circa Mid 1890's
Ex - Alvin Goldstein Collection
Excellent and Luminous
Estimate: \$225 - \$275



Lot 268

City Bank with Paying Teller

Rare & Desirable Deep Version
Made by the H. L. Judd Company
Wallingford, Ct. - Circa Mid 1890's
Ex - Alvin Goldstein Collection
Very Fine Condition
Estimate: \$400 - \$500



Lot 269

Home Savings Bank with Dog Head Finial

By J. & E. Stevens Company
Cromwell, Ct. - Circa 1890
Ex - William Werbell Collection
Excellent Plus Condition
Estimate: \$125 - \$175



Lot 270

State Bank - Straight Letters

Very Scarce Example 6 7/8" Tall
By Kenton Hardware Company
Kenton, Oh. - Circa 1895
Near Mint - Superior Highlights
Estimate: \$250 - \$350



Lot 271

Home Savings Bank with

Super Rare Ebony Finish
By J. & E. Stevens Company
Cromwell, Ct. - Circa 1890
Ex - Alvin Goldstein Collection
Excellent Condition
Estimate: \$250 - \$350



Lot 272

Pair of Domed Mosque Banks with Gold and Copper Finish

By Grey Iron Casting Company
Mount Joy, Pa. - Circa 1910
Pristine Plus - Exceptional Patina
Estimate: \$175 - \$225



Lot 273

World's Fair Administration Building with an Advertisement for The Hub - Chicago

By the Magic Introduction Company
New York City - Circa Mid 1890's
Excellent Plus Condition
Estimate: \$400 - \$500



Lot 274

Pair of Domed Mosque Banks with Vivid Polychrome Paint

By Grey Iron Casting Company
Mount Joy, Pa. - Circa 1910
Ex - Alvin Goldstein Collection
Pristine and Very Bright
Estimate: \$250 - \$350



Lot 275

Second Smallest Columbia Bank

Prevalent Silver and Gold Finish
Made by Kenton Hardware Company
Kenton, Ohio - Late 1890's - 5 3/4" T
Pristine and Very Bright
Estimate: \$350 - \$450



Lot 276

Second Largest Columbia Bank with Very Unusual Painted Finish

Made by Kenton Hardware Company
Kenton, Ohio - Late 1890's - 7" Tall
Excellent Condition
Estimate: \$800 - \$1000



Lot 277

Second Smallest Columbia Bank

Desirable Electroplated Finish
Made by Kenton Hardware Company
Kenton, Ohio - Late 1890's - 5 3/4" T
Pristine Plus Condition
Estimate: \$350 - \$450



Lot 278

Large Domed Mosque Bank

Common Variant with Small Door
By the Grey Iron Casting Company
Mount Joy, Pa. - Ca. Early 1900's
Ex - Alvin Goldstein Collection
Pristine - Exceptional Patina
Estimate: \$250 - \$350



Lot 279

Columbian Fair Recording Bank

By the Magic Introduction Company
New York City - Pat'd. April 7, 1891
Ex - William Werbell Collection
Fine Condition (Lacks Trap)
Estimate: \$200 - \$250



Lot 280

Large Domed Mosque Bank

Rare Version with Large Door
By the Grey Iron Casting Company
Mount Joy, Pa. - Ca. Early 1900's
Excellent Condition
Estimate: \$350 - \$450



Lot 281

Independence Hall Bank

Made by Enterprise Mfg. Company
Philadelphia, Pa. - Circa Late 1870's
Ex - Alvin Goldstein Collection
Excellent Condition
Estimate: \$250 - \$350



Lot 282

English Independence Hall Bank

Referred to as the Tower Bank
By Sydenham & McOustra
England - Circa Late 1890's
Excellent Condition
Estimate: \$200 - \$250



Lot 283

Independence Hall Bank

Desirable Polychrome Specimen
Made by Enterprise Mfg. Company
Philadelphia, Pa. - Circa Late 1870's
Ex - Alvin Goldstein Collection
Fine Condition
Estimate: \$350 - \$450

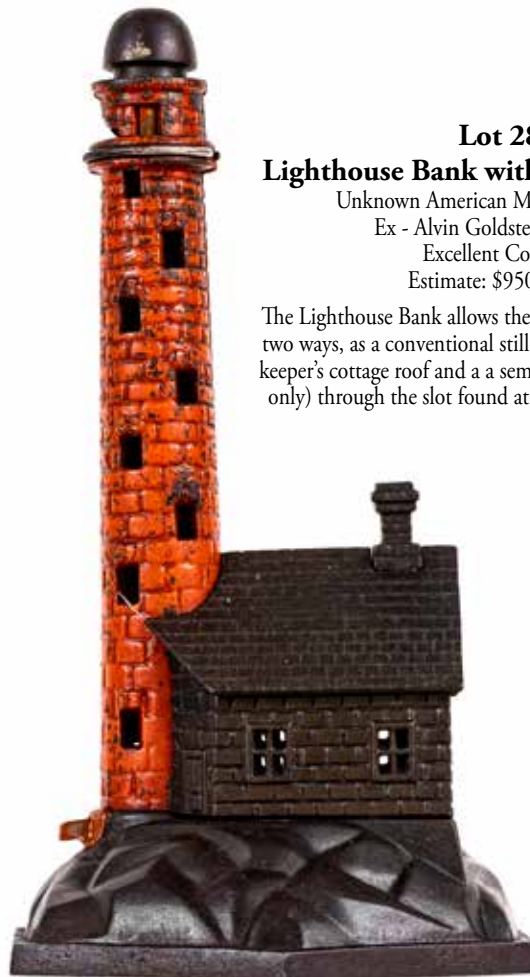


Lot 284

Globe Savings Fund Bank

By the Kyser & Rex Company
Philadelphia - Circa Late 1880's
Very Fine Condition
Estimate: \$600 - \$800

The Globe Savings Fund has a hidden trick drawer that allows you to store something small inside.



Lot 285

Lighthouse Bank with Keepers Cottage

Unknown American Maker - Circa 1891
Ex - Alvin Goldstein Collection
Excellent Condition
Estimate: \$950 - \$1250

The Lighthouse Bank allows the operator to save money in two ways, as a conventional still bank through a slot in the keeper's cottage roof and a semi-mechanical bank (nickels only) through the slot found at the top of the lighthouse.



Lot 286

United Treasury Building

Made by Grey Iron Casting Company
 Mount Joy, Pennsylvania - Mid 1910's
 Ex - Alvin Goldstein Collection
 Excellent Condition
 Estimate: \$225 - \$275



Lot 287

Mormon Tabernacle Savings Bank

By the Keyless Lock Company
 American - Circa Late 1890's
 Ex - Alvin Goldstein Collection
 Excellent Condition
 Estimate: \$750 - \$950



Lot 288

Bungalow House with Porch

Made by Grey Iron Casting Company
 Mount Joy, Pennsylvania - Mid 1910's
 Excellent Condition
 Estimate: \$175 - \$225



Lot 289

Patriotic Colored Multiplying Bank

Made by the J. & E. Stevens Company
 Cromwell, Connecticut - Circa 1880
 Ex - Alvin Goldstein Collection
 Very Fine with Good Patina
 Estimate: \$700 - \$900

In the Multiplying Bank, optical trickery makes your coin deposits seem to magically grow. This illusion occurs because of the bank's internally set angled mirrors. Thus, each coin appears as three to the eye.



Lot 290

Building with Domed Belfry

Exceptional Metallic Highlights
 By the Kenton Hardware Company
 Kenton, Ohio - Circa Late 1890's
 Ex - Alvin Goldstein Collection
 Excellent Plus Condition
 Estimate: \$950 - \$1250



Lot 291
Snappit Semi-Mechanical Bank

Made by the Judd Mfg. Company
Connecticut - Circa Late 1880's
Ex - Alvin Goldstein Collection
Excellent with Great Patina
Estimate: \$225 - \$275



Lot 292
House with Basement

By Ohio Foundry Company
Ohio - Circa Late 1890's
Excellent Plus Condition
(Missing the butterfly trap)
Estimate: \$900 - \$1200



Lot 293
Iconic Palace Bank

Dark Japanned Finish
By Ives, Blakeslee & Company
Bridgeport, Ct. - Circa 1890
Excellent Plus Condition
Estimate: \$1000 - \$1500



Lot 294
Columbia Tower Savings Bank

Desirable Nickel Plated Finish
Made by Grey Iron Casting Company
Mount Joy, Pennsylvania - Mid 1890's
Near Mint with Glowing Patina
Estimate: \$600 - \$800



Lot 295
Marietta Silo Still Bank

American - Circa 1930
Pristine Plus Condition
Estimate: \$300 - \$400



Lot 296
Columbia Tower Savings Bank

Japanned with Gold Highlights
Made by Grey Iron Casting Company
Mount Joy, Pennsylvania - Mid 1890's
Excellent Plus Condition
Estimate: \$450 - \$550



Lot 297
Hansel & Gretel at the Witch's Cottage

A Highly Superior Polychrome Example
 Unknown Austrian Maker - Circa 1900
 Pristine Plus Condition
 Estimate: \$900 - \$1200



Lot 298
Scarce Liliput Still Bank

Yellow with Red & White Cupola
 By the J. & E. Stevens Company
 Cromwell, Connecticut - 1880's
 Ex - Alvin Goldstein Collection
 Fine Condition
 Estimate: \$900 - \$1200

Lot 299
Large Boston State House Bank

Attributed to Smith & Egge Company
 Boston, Massachusetts - Mid 1870's
 Presents with Excellent Paint
 (Read Full Description Below)
 Estimate: \$2500 - \$3500

Charles Bullfinch's design for the Boston State House (Erected 1795 - 1798) is considered one of the greatest expressions of Federal Architecture. The original wood dome had leaking issues. So none other than Paul Revere was commissioned to sheath the dome in copper in 1802. Excellent specimens of this scarce souvenir building bank regularly sell above \$5000. The low estimate here reflects a repair made to a crack in the red roof.



Lot 300
Large Home Bank - No Dormers

Finished in Patriotic Color Scheme
 By the J. & E. Stevens Company
 Cromwell, Conencticut - 1880's
 Ex - Alvin Goldstein Collection
 Fine Condition
 Estimate: \$900 - \$1200



Lot 301
Impressive Domed Bank Building

Scarce Paper Lithography Over Wood
 Unknown American Maker - Ca. 1890's
 Excellent State of Preservation
 Finest specimen we have seen.
 Estimate: \$450 - \$550





Lot 302
Yellow Liliput Bank
 By J. & E. Stevens Company
 Cromwell, Ct. - Circa 1880
 Very Fine Condition
 (Trap Replaced)
 Estimate: \$300 - \$400



Lot 303
Dog on Turntable Bank
 Copper with Green Wash
 By the H. L. Judd Company
 Wallingford, Ct. - Mid 1890's
 Excellent Condition
 (Minor Door Chip)
 Estimate: \$250 - \$350



Lot 304
The Presto Bank
 By Kyser & Rex Company
 Philadelphia, Pa. - Circa 1890
 Excellent Plus Condition
 Estimate: \$250 - \$350



Lot 305
Yellow Novelty Bank
 By J. & E. Stevens Company
 Cromwell, Ct. - Circa 1880
 Very Fine Condition
 Estimate: \$500 - \$700



Lot 306
Pump and Bucket Bank
 Attributed to Nicol and Company
 Chicago, Illinois - Circa 1890
 Excellent - Red Base
 with minor overpaint.
 Estimate: \$550 - \$750



Lot 307
Captain Kidd Bank
 Rare Mechanical Example
 Unknown American Maker
 Probably Made Circa 1900
 Very Fine Condition
 Estimate: \$500 - \$700



Lot 308
Pig in Highchair Bank
 By J. & E. Stevens Company
 Cromwell, Ct. - Circa 1890
 Excellent Condition
 Estimate: \$450 - \$550



Lot 309
The Tammany Bank
 Little Fatman Version
 By J. & E. Stevens Company
 Cromwell, Ct. - Circa 1910
 Excellent Plus Condition
 Estimate: \$400 - \$500



Lot 310
Frog on Lattice Base
 White, Red & Green Colors
 By J. & E. Stevens Company
 Cromwell, Ct. - Circa 1870's
 Excellent Plus Condition
 Estimate: \$400 - \$500



Lot 311
Snappit Building Bank
 Unusual Powder Blue Roof
 By the H. L. Judd Company
 Wallingford, Ct. - Ca. 1890
 Very Fine Condition
 Estimate: \$350 - \$450



Lot 312
Frog on Rock Bank
 a.k.a. "Jug-O-Rum"
 By Kilgore Mfg. Company
 Westerville, Ohio - 1930's
 Excellent Condition
 (Tiny chip on left side of his mouth)
 Estimate: \$300 - \$400



Lot 313
Leap Frog Bank
 By Shepard Hardware Company
 Buffalo, New York - Circa 1890
 Very Fine Condition
 (1" crack to back wall)
 Estimate: \$900 - \$1200

Lot 314
Eagle and Eaglets Bank
 Desirable Green Base Variant
 By J. & E. Stevens Company
 Cromwell, Ct. - Circa 1890
 Excellent Plus with Great Highlights
 Estimate: \$700 - \$900



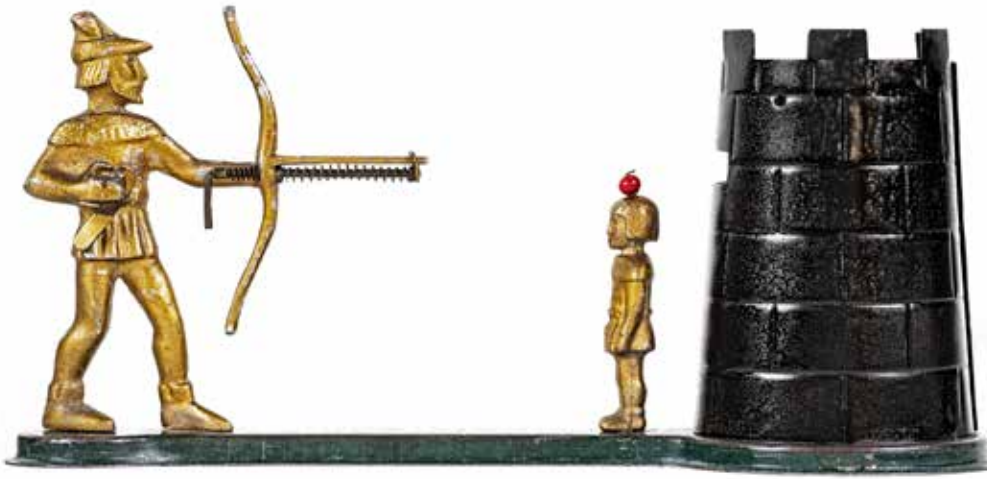
Lot 315
Small Standing Rabbit Bank
 By Lockwood Mfg. Company
 South Norwalk, Ct. - Ca. 1890
 Very Fine Condition
 (Inside of ears restored)
 Estimate: \$350 - \$450



Lot 316
Bull Dog - Raise Tail
 Made by H. L. Judd Company
 Wallingford, Ct. - Late 1880's
 Pristine with Good Patina
 Estimate: \$500 - \$700
 Coins placed on the dog's tongue are deposited when his tail is raised. Very sweet folksy bank.



Lot 317
Bear Hugs Tree Stump
 Made by H. L. Judd Company
 Wallingford, Ct. - Late 1880's
 Excellent Condition
 Estimate: \$400 - \$500



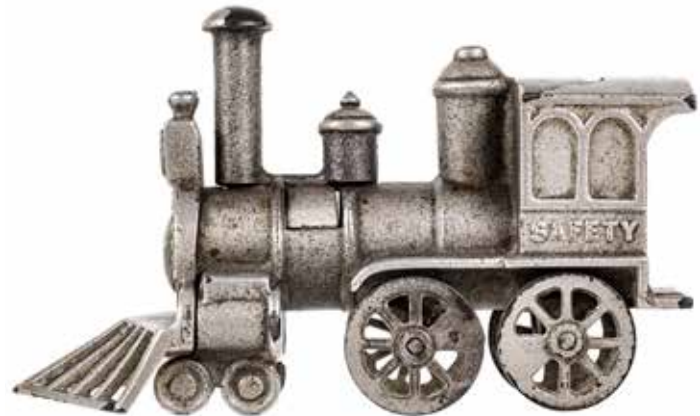
Lot 318
Sheet Steel William Tell Bank

Rare Example with Black Tower
 Unknown Australian Manufacturer
 Produced and Sold Early 1950's
 Excellent Condition
 Estimate: \$500 - \$700



Lot 319
Pistol Dime Savings Bank

A Sheet Steel Specimen
 By the Richard Elliott Company
 Chicago, Illinois - Circa 1909
 Pristine Condition
 Estimate: \$250 - \$325



Lot 320
Safety Locomotive Puzzle Bank

(Made for use with dimes only)
 Unknown American Manufacturer
 Patented by Edward Colby Nov. 1887
 Excellent Nickel Plated Surface
 Estimate: \$450 - \$550

Lot 321
Bomb 'N' Bank

Made by EMCO Tool Mfg. Company
 Woodside, New York - Early 1940's
 Excellent with Cardboard Box
 (Box Fair)
 Estimate: \$450 - \$550

The Bomb 'N' Bank is a particularly difficult toy bank to operate because it is made up of two separate parts. There is the all metal B-52 bomber with its coin-dropping (i.e. bomb) site mechanism. And there is also the enemy's camouflaged gas tank can (i.e. bank) into which the coin/bombs are released.





Lot 322
Little Joe Bank - Dagger Eyes
 By Sydenham & McOustra Ltd.
 Great Britain - Circa Late 1940's
 Pristine Plus and Bright
 Estimate: \$200 - \$275



Lot 323
Jolly Man Toy Bank
 Unknown English Maker
 Produced & Sold Circa 1930
 Excellent Condition
 Estimate: \$600 - \$800



Lot 324
Little Joe Bank - Molded Eyes
 By Sydenham & McOustra Ltd.
 Great Britain - Circa Mid 1930's
 Excellent Plus Condition
 Estimate: \$200 - \$275



Lot 325
'Spise the Mule - Boy Seated
 Made by J. & E. Stevens Company
 Cromwell, Connecticut - Ca. 1890's
 Excellent Condition
 Estimate: \$750 - \$950



Lot 326
'Spise the Mule - Jockey Version
 Made by J. & E. Stevens Company
 Cromwell, Connecticut - Ca. 1890's
 Pristine with Very Rich Color
 Estimate: \$750 - \$950



Lot 327
Short Sleeved Dinah Bank
 By John Harper Company Ltd.
 Willenhall, England - Ca. 1911
 Excellent with Little Chipping
 Estimate: \$400 - \$500

Lot 328
Organ Bank - Cat & Dog
 By the Kyser & Rex Company
 Philadelphia, Pa. - Circa 1880
 Very Fine Condition
 Estimate: \$550 - \$750





Lot 329
Green Cabin Bank
 By J. & E. Stevens Company
 Cromwell, Ct. - Mid 1880's
 Excellent Paint & Patination
 Estimate: \$350 - \$450



Lot 330
Rooster Bank
 By Kyser & Rex Company
 Philadelphia, Pa. - Circa 1880
 Excellent (replaced lever)
 Estimate: \$225 - \$275



Lot 331
Tabby Bank - Red Base
 Unknown American Maker
 Produced Circa 1880
 Excellent Plus Condition
 Estimate: \$550 - \$750



Lot 332
Butting Goat Bank
 By H. L. Judd Company
 Westerville, Ohio - 1890
 Excellent Plus Condition
 Estimate: \$550 - \$750



Lot 333
Elephant - Man Pops Up
 By Enterprise Mfg. Company
 Philadelphia, Pa. - Circa 1880
 Excellent (Man Lacks Serape)
 Estimate: \$300 - \$400



Lot 334
Trick Elephant Bank
 Scarce Early Gray Variant
 Made by Hubley Mfg. Company
 Lancaster, Pa. - Circa Mid 1920's
 Excellent Plus Paint - Great Patina
 Estimate: \$450 - \$550



Lot 335
Creedmoor Bank
 By J. & E. Stevens Company
 Cromwell, Ct. - Early 1880's
 Excellent Plus Condition
 Estimate: \$300 - \$400

Lot 336
Trick Dog Bank
 Early Six Part Base
 Shepard Hardware Company
 Buffalo, New York - Circa 1888
 Excellent Paint and Patina
 Estimate: \$550 - \$750



Lot 337
Artillery Bank
 Rare Confederate Soldier
 By J. & E. Stevens Company
 Cromwell, Ct. - Circa 1892
 Very Good Paint and Patina
 Estimate: \$750 - \$950

Lot 338
Lion and Monkeys Bank
 Knot with Double Peanut
 Made by Kyser & Rex Company
 Philadelphia, Pa. - Circa Late 1880's
 Pristine (Small Monkey Replaced)
 Estimate: \$450 - \$550



Lot 339
Dog Cart
 Shimer Toy Company
 Pennsylvania - 1890 - 10 1/2" L
 Excellent Condition
 (Replaced figure)
 Estimate: \$275 - \$375



Lot 340
Foxy Grandpa Gig
 Kenton Hardware
 Kenton, Oh. - 1910 - 10" L
 Excellent Plus Condition
 Estimate: \$700 - \$900



Lot 341
Hansom Cab
 Pratt & Letchworth
 Buffalo, NY - 1890 - 10" L
 Excellent Condition
 Estimate: \$600 - \$800



Lot 342
Woman in a Gig
 Kenton Hardware
 Kenton, Oh. - 1910 - 10" L
 Excellent Plus Condition
 Estimate: \$550 - \$750



Lot 343
Stake Wagon
Ives, Blakeslee Company
Bridgeport, Ct. - 1895 - 15 1/2" L
Excellent Plus Condition
Estimate: \$800 - \$1000

Lot 344
"City Delivery" Truck
Harris Toy Company
Toledo, Oh. - 1895 - 15" L
Fine Condition
Estimate: \$1000 - \$1500



Lot 345
Mamakatzenjammer Spanking Toy
Kenton Hardware
Kenton, Oh. - 1910 - 11 1/4" L
Pristine Condition
(Driver replaced)
Estimate: \$950 - \$1250

Lot 346
Hay Wagon
Hubley Mfg. Co.
Lancaster, Pa. - 1910 - 12 1/4" L
Excellent Plus Condition
Estimate: \$800 - \$1000





Lot 347
Fire Chief Wagon
with Running Horse

Hubley Mfg. Co.
Lancaster, Pa. - 1896 - 15" L
Excellent Plus Condition
Estimate: \$1200 - \$1500



Lot 348
Coal & Wood Wagon

Wilkins Hardware
Keene, NH - 1893 - 12 1/4" L
Excellent Condition
(Original Ives figure missing the pin to secure)
Estimate: \$600 - \$800



Lot 349
Fire Chief Wagon

Ideal Toy Co.
Pennsylvania - 1895 - 15 1/2" L
Very Fine Condition
(Driver is well replaced)
Estimate: \$700 - \$900



Lot 350
Two Horse #53 Pumper
with Moving Piston

Carpenter Hardware
 Port Chester, NY - 1880's - 18" L
 Excellent Plus & Bright
 (Original rear figure is very good)
 Estimate: \$1250 - \$1750



Lot 351
Scarce Oversize Pumper
with Hanging Horses

Wilkins Hardware
 Keene, NH - 1895 - 19" L
 Excellent Plus Condition
 (Original figure with some repaint)
 Estimate: \$1250 - \$1750



Lot 352
Model # 125 Fire Pumper
with Scarce Connection

Between Hitch & Pumper
 Wilkins Hardware
 Keene, NH - 1880's - 16" L
 Very Fine Condition
 (Figure is original but not to this toy)
 Estimate: \$1000 - \$1500

One original wooden box side accompanies this lot.



Lot 353
Hook & Ladder
 Dent Hardware
 Fullerton, Pa. - 1910 - 27" L
 Pristine Condition
 (One figure repainted)
 Estimate: \$1200 - \$1500



Lot 354
Hook & Ladder
 Ideal Mfg. Co.
 Pennsylvania - 1905 - 30" L
 Excellent Condition
 (Original figures are repainted, one guide wheel partially broken)
 Estimate: \$700 - \$900



Lot 355
Hook & Ladder
 Sheet Tin & Iron
 Wilkins Hardware
 Keene, NH - 1905 - 27" L
 Pristine Condition
 Estimate: \$950 - \$1250

Lot 356
American Clockwork Gig
with Tin Figure

George Brown Company
Forestville, Ct. - 1890 - 16" L
Excellent Plus Condition
(Horse Fine Condition)
Estimate: \$2000 - \$2500



This toy is in outstanding condition,
given its age and delicateness.
It works well.

Lot 357
"The Hook Behind"

Clockwork Toy
Ives, Blakeslee Company
Bridgeport, Ct. - 1880 - 17" L
Ex - Bill Bertioia Collection
Excellent Plus Condition
Estimate: \$6500 - \$8500

This is a beautiful and intricate early American Tin Clockwork Toy.
It was sold for around \$4.00 in its time (a significant amount).
When operating, she goes up and down and the boy runs behind
her (Hooking Behind!). The toy works well. A sealant was applied
to the outside of the vehicle to save the paint.



Lot 358
American Clockwork Gig
with Full Bodied Figures

Ives, Blakeslee Company
Bridgeport, Ct. - 1880 - 16" L
Excellent Plus Condition
Estimate: \$4000 - \$5000



This is a superior example of the toy. Ives, Blakeslee employed painted brass horses for these toys,
whereas, George Brown used tin. The toy works well.



Lot 359
Black Boy on Duck
 Bell Toy
 Gong Bell Mfg. Co.
 Connecticut - 1890 - 7 1/4" L
 Excellent Plus Condition
 Estimate: \$1000 - \$1500

Lot 360
Young Boy Pulling Cat's Tail

Bell Toy
 N. N. Hill Company
 Connecticut - 1890 - 5 7/8" L
 Pristine Condition
 Estimate: \$5500 - \$7500



This is a very scarce, colorful and desirable bell toy. Perhaps a couple dozen still exist. It is a wonderful example.

Lot 361
The Captain & His Kids

Bell Toy
 Gong Bell Mfg. Company
 Connecticut - 1890 - 8 1/2" L
 Pristine Condition
 Estimate: \$7000 - \$9000

This is a superior example of a colorful and rare Bell Toy. To our knowledge less than 10 exist.



Lot 362
"Whoa dar Caesar"
 Bell Toy
 Ives, Blakeslee and Co.
 Bridgeport, Ct. - 1890 - 6" L
 Pristine Condition
 Estimate: \$2000 - \$2500



Lot 363
Clown Riding Fish
 Bell Toy
 American - 1885 - 5" L
 Excellent Plus Condition
 Estimate: \$1500 - \$2000



Lot 364
Racing Scull - Midsize

Army Rowing
 U. S. Hardware Company
 American - 1890 - 14" L
 Excellent Overall
 (Some repaint to figures)
 Estimate: \$2250 - \$2750



Lot 365
Alphonse & Gaston Automobile

Kenton Hardware
 Kenton, Oh. - 1910 - 7 3/4" L
 Excellent Plus Condition
 Estimate: \$1750 - \$2250

It retains its original figures and steering wheel.



Lot 366
Racing Scull - Midsize

Navy Rowing
 U. S. Hardware Company
 American - 1890 - 14" L
 Excellent Plus Overall
 (Last three original figure's heads are repainted)
 Estimate: \$2500 - \$3500



Lot 367
Toonerville Trolley
 Nifty Toy Company
 German - 1925 - 7" T
 Very Fine Condition
 Estimate: \$225 - \$300

The toy works sluggishly. Needs some love to hum once again.



Lot 368
Buttercup with Dog
 Nifty Toy Company
 German - 1920's - 7 3/4" L
 Excellent Condition
 Estimate: \$400 - \$600

Lot 369
Clown Topsy-Turvy Car
 Hans Ebel
 German - 1928 - 10" L
 Fine Graphics
 (See Description)
 Estimate: \$450 - \$650

The gears of this toy must be realigned to get it working.



Lot 370
Ferdinand & Matador with Box
 Louis Marx & Company
 New York - Late 1930's - 7" L
 Pristine with Box
 Estimate: \$275 - \$375
 The toy works well.



Lot 371
Snoopy Gus with Box
 Louis Marx & Company
 New York - 1930 - 7" L
 Pristine Plus Condition
 (Box Good with Tears)
 Estimate: \$700 - \$900



Lot 372
Buster Brown & Tige
at Lamp Post
Made by Gunthermann
German - 1920 - 8 1/4" T
Fine Paint
(Not Working)
Estimate: \$500 - \$700



Lot 373
Clockwork Acrobat
Automatic Toy Works
New York - 1870 - 8 1/2" Tall
Very Good Condition
(Redressed and missing feet)
Estimate: \$600 - \$800
The toy works well.



Lot 374
BiPlane Go Round
of Eiffel Tower
German - 1910 - 16" Tall
Excellent Overall
(Eiffel Tower Repainted)
Estimate: \$2500 - \$3500

Lot 375
Rare Boat Tail #7 Race Car
Paris to Berlin
Made by Pinard
French - 1908 - 12" L
Excellent Condition
(Original fenders have some restoration)
Estimate: \$3000 - \$5000
The toy works well.





Lot 376
Two Kobe Toy Musicians
 Japanese - 1920's - 4" to 4 1/2" T
 Excellent Condition
 Estimate: \$225 - \$275



Lot 377
Kobe Toy
 Japanese - 1920's - 3 1/2" T
 Excellent Condition
 Estimate: \$225 - \$275
 When works his long tongue comes out
 and a man pops up top.



Lot 378
Two Kobe Toy Drummers
 Japanese - 1930's - 3 1/2" T
 Pristine Condition
 Estimate: \$225 - \$275



Lot 379
Two Kobe Toys
 Japanese - 1920/30's - 3 1/2" to 4 1/4" T
 Very Fine Condition
 Estimate: \$200 - \$250



Lot 380
Kobe Toy Chef
 Japanese - 1940's - 3 3/4" T
 Mint in Box
 Estimate: \$250 - \$325



Lot 381
Two Kobe Toys
 Food Themed
 Japanese - 1930's - 4 3/4" T
 Excellent Condition
 Estimate: \$300 - \$400



Lot 382
Kobe Toy Melon
Cutter and Eater
Japanese - 1920's - 5" L x 4 3/4" T
Excellent Plus Condition
Estimate: \$250 - \$325



Lot 383
Kobe Toy Monkey & Snake
Japanese - 1920's - 6" L x 4 3/4" T
Excellent Condition
Estimate: \$250 - \$325



Lot 384
Two Musicians on a
Fishing Boat
Japanese - 1920's - 7 3/4" L x 4 1/2" T
Excellent Plus Condition
Estimate: \$400 - \$600



Lot 385
Kobe Musicians
Japanese - 1920's - 6 3/4" T
Excellent Plus Condition
Estimate: \$250 - \$325



Lot 386
Kobe Snake Charmer
Japanese - 1920's - 6 3/4" T
Excellent Plus Condition
Estimate: \$250 - \$325



Lot 387
Hot Air Furnace Patent Model

By R. L. Bate
 American - 1862 - 6" T x 6" W
 Very Fine Condition
 Estimate: \$225 - \$275



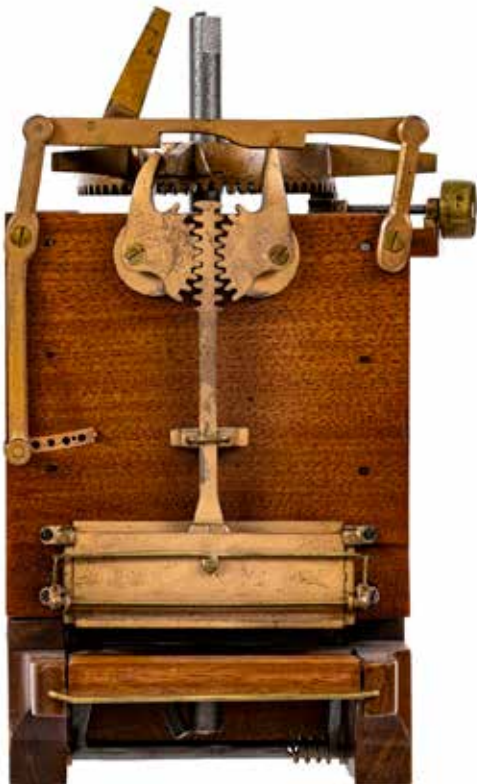
Lot 388
Footwarmer Patent Model

By N. H. Bruce - Sept 17, 1867
 American - 9" W x 5" T
 Very Fine Condition
 Estimate: \$250 - \$350



Lot 389
Domestic Boiler / Water Heater

for Culinary Purposes
 By R. E. Deane - Dec. 14, 1869
 American - 10" T
 Excellent Plus Condition
 Estimate: \$400 - \$500



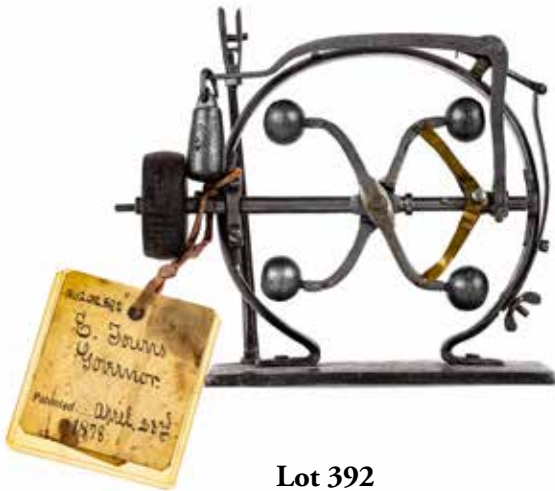
Lot 390
Brick Making Machine

Patent Model
 By P. Hayden - Sept. 8, 1868
 American - 11 3/4" T
 Excellent Plus Condition
 Estimate: \$400 - \$500
 Complete with seven trays for the
 bricks to be made.

Lot 391
Leather Stuffing Machine

By J. W. Schayer - June 9, 1868
 American - 12 1/2" T x 12" W x 12" D
 Excellent Plus Condition
 Estimate: \$500 - \$700





Lot 392
Governor Mechanism
 Patent Model
 By E. Towns - April 23, 1878
 American - 8 1/2" W x 6 1/2" T
 Excellent Condition
 (Weight support arm broken, some pieces present)
 Estimate: \$225 - \$300



Lot 393
Spring Mattress Patent Model
 By August Gebhard - Feb. 18, 1868
 American - 12" L x 10" W - 3" H
 Fine Condition
 Estimate: \$300 - \$400



Lot 394
Artificial Leg Patent Model
 By A. McOmber - Nov. 19, 1867
 American - 10" Tall
 Fine Condition
 Estimate: \$350 - \$450



Lot 395
Wringer Patent Model
 By Fransie Way - March 21, 1876
 American - 13" Tall
 Excellent Plus Condition
 Estimate: \$400 - \$600

Lot 396
Window Patent Model
 By G. M. Evans - Sept. 23, 1879
 American - 10" W x 10 1/2" T
 Excellent Plus Condition
 Estimate: \$500 - \$700





Lot 397
American Railway Express

Keystone Mfg. Co.
Boston, Ma. - 1925 - 27" L
Professionally Restored
Estimate: \$600 - \$800



Lot 398
National Biscuit Company

By New-Er Quality Toys
American - 1980's - 26" L
Pristine Condition
Estimate: \$450 - \$650



Lot 399
Coal Truck

By Sturditoys Mfg.
American - 1925 - 25" L
Restored
Estimate: \$400 - \$500

Lot 400
“Overland Stage Lines” Bus

Made by Retro 1-2-3
 Woodstock, IL - 2002 - 30” L
 Mint Condition
 Estimate: \$700 - \$900



Lot 401
“Glacier Park Transportation” Bus

Made by Retro 1-2-3
 Woodstock, IL - 2002 - 30” L
 Mint Condition
 Estimate: \$700 - \$900



Lot 402
“Pickwick Night Coach”

Made by Retro 1-2-3
 Woodstock, IL - 2002 - 33” L
 Mint Condition
 Estimate: \$900 - \$1200



Lot 403
“Greyhound Lines” Bus

Made by Retro 1-2-3
 Woodstock, IL - 2002 - 29” L
 Mint Condition
 Estimate: \$700 - \$900





Lot 404
“Chieftain Cargo Lines”

Wyandotte Mfg. Co.
 Michigan - 1940's - 25" L
 Excellent Condition
 (Clip to secure front seam missing)
 Estimate: \$250 - \$325

Lot 405
“Shell” Gasoline Truck

Minnitoys Otaco Ltd.
 Ontario, Canada - 1940/50's - 30" L
 Excellent Condition
 Estimate: \$300 - \$400



Lot 406
Wooden Bus

Made by Ken Vliet
 Pennsylvania - 2005 - 30" L
 Near Mint Condition
 Estimate: \$700 - \$900
 Ken spent about 150 hours crafting this
 wonderful 1930's Era bus.

Lot 407
Truck Lines Panel Truck

Wyandotte Mfg. Co.
 Michigan - 1940's - 26" L
 Excellent Plus Condition
 Estimate: \$300 - \$400





Lot 408
Aerial Extension Ladder

Buddy L Toy Company
East Moline, IL - 1925 - 42" L
Restored by Marvin Silverstein
Professionally Restored
Estimate: \$550 - \$750



Lot 409
Wrecker Truck

Buddy L Toy Company
East Moline, IL - 1925 - 30" L
Restored by Marvin Silverstein
Professionally Restored
(Some replaced parts)
Estimate: \$600 - \$800



Lot 410
Water Tower

Keystone Toy Company
Boston, Ma. - 1925 - 32" L
Very Fine Condition
(Minor paint flaking and missing water cap)
Estimate: \$500 - \$700



Lot 411
Owl Moving Eye Clock
 Art Nouveau Era
 German - 1920's - 7" Tall
 Made of Silver, Wood & Glass
 Pristine Condition
 Estimate: \$1200 - \$1500



Lot 412
Laborer with Clock
 Ansonia Clock Company
 Ansonia, Ct. - 1920 - 11 1/2" T
 Made for the French Market "Breton"
 Excellent Plus Condition
 Estimate: \$600 - \$800



Lot 413
Registering Dime Savings Bank
 Ives, Blakeslee Company
 Connecticut - 1890 - 7 1/2" T
 Excellent Plus Condition
 Estimate: \$900 - \$1200



Lot 414
"Young Dandy"
 Smoking Automaton
 By Leopold Lambert
 French - 1890 - 26" Tall
 Pristine Condition
 Estimate: \$4500 - \$6500
 This is a rare and very desirable
 automaton. The toy functions well and
 he still inhales and exhales smoke.

Lot 415
Early Gentleman Watch Holder
 European - Circa 1850 - 16 1/2" T
 Excellent Condition
 Estimate: \$3000 - \$4000





Lot 416
Zodiac Sundial
 Marked WI-CO
 Wrightsville Iron Company
 Wrightsville, Pa. - 1930's - 16" T with 11" D
 Near Mint Condition
 (Missing tiny piece to cast shadow)
 Estimate: \$1200 - \$1500



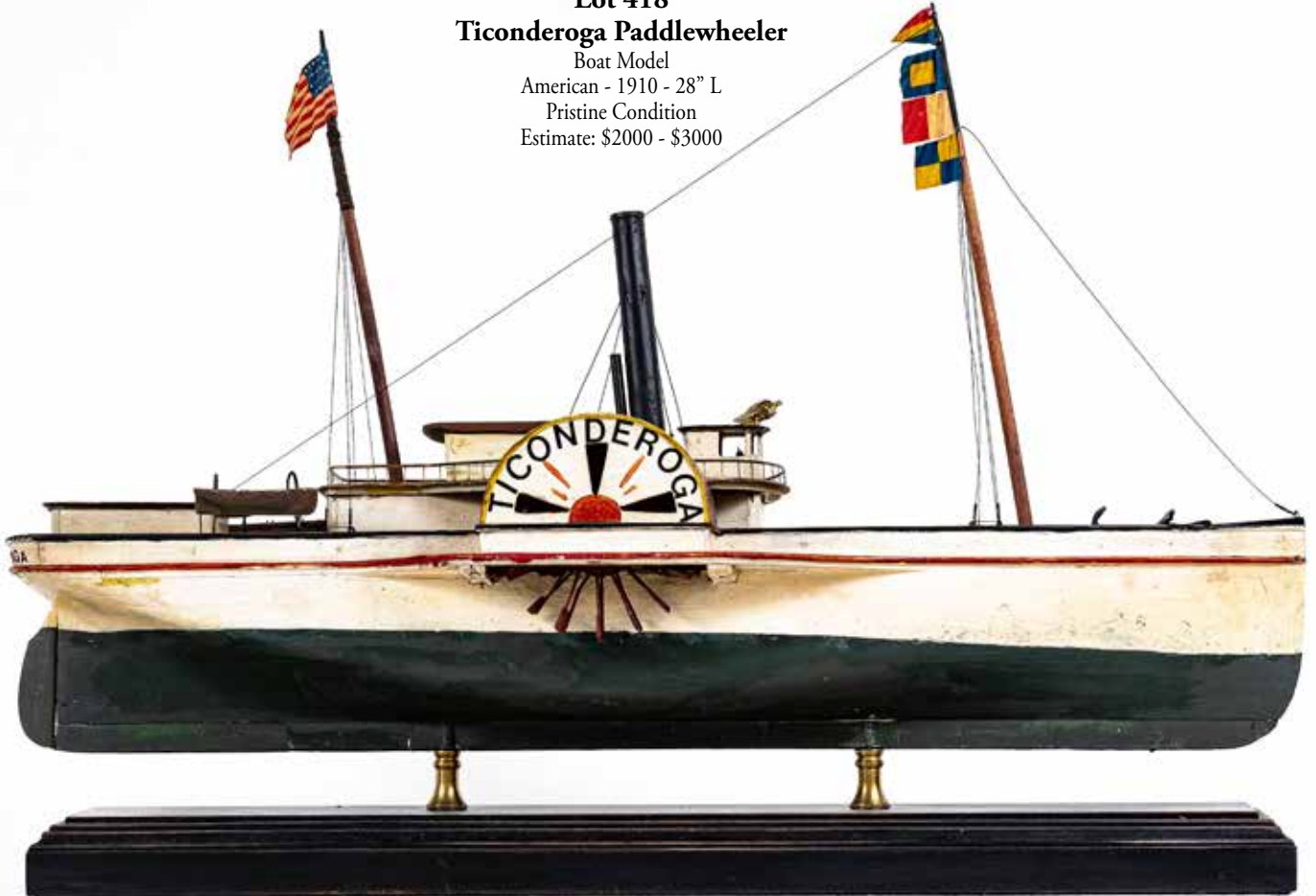
Lot 417
Banjo Player Blinking
 Eye Clock
 Bradley & Hubbard
 Connecticut - 1880 - 16" T
 Excellent Plus Condition
 (Hat Restored)
 Estimate: \$1000 - \$1500



Lot 416
Zodiac Sundial Top

Lot 418
Ticonderoga Paddlewheeler

Boat Model
 American - 1910 - 28" L
 Pristine Condition
 Estimate: \$2000 - \$3000





Lot 419
Trick Dog Bank - One Part Base

Made by Hubley Mfg. Company
 Lancaster, Pa. - Circa Early 1930's
 Pristine & Very Bright
 Estimate: \$600 - \$800

Early mechanical bank hobbyists referred to this version of the Trick Dog Bank as being "modern" because, at the time, it was only a decade old. However, today it is nearly a century old.

Lot 420

Monkey Bank

Made by Hubley Mfg. Company
 Lancaster, Pa. - Circa Late 1920's
 Collection of Al & Nora Hancock
 Mint with Original Chain
 Estimate: \$1250 - \$1750

Pennies placed in the monkey's mouth are deposited into the organ grinder's hurdy gurdy when the lever is pressed. This represents an extraordinary example of this colorful toy bank.



Lot 421

Trick Dog Bank - Six Part Base

Rare Yellow & Burgundy Colors
 Made by Hubley Mfg. Company
 Lancaster, Pa. - Ca. Early 1910's
 Collection of Al & Nora Hancock
 Excellent Plus with Great Patina
 Estimate: \$1250 - \$1750

In the late 1890's, when the Shepard Hardware Company closed down their operations, they sold the molds for several of their best designs to Hubley Mfg. and to the Stevens Company. One can see that Hubley greatly changed the color scheme for this bank. This is a very high quality example of this unusual piece.

Lot 422

Trick Dog Bank - One Part Base

Rare Green Base
 Made by Hubley Mfg. Company
 Lancaster, Pa. - Circa Early 1930's
 Pristine Condition
 Estimate: \$1000 - \$1500





Lot 423
Trick Elephant Toy Bank

Finished in Patriotic Colors
Made by Hubley Mfg. Company
Lancaster, Pa. - Circa Early 1930's
Excellent Condition
Estimate: \$250 - \$350

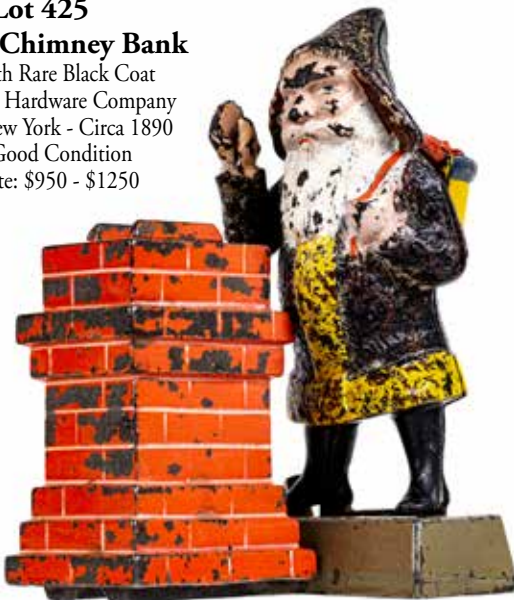


Lot 424
Elephant and Three Clowns

Made by J. & E. Stevens Company
Cromwell, Ct. - Circa Mid 1890's
Excellent Plus Condition
Estimate: \$900 - \$1200

Lot 425
Santa at Chimney Bank

Santa with Rare Black Coat
By Shepard Hardware Company
Buffalo, New York - Circa 1890
Very Good Condition
Estimate: \$950 - \$1250



Lot 426
Speaking Dog Bank - Red Dress

Made by Shepard Hardware Company
Buffalo, New York - Circa Early 1890's
From the Ed Singer Collection
Pristine Thick Bright Paint
Estimate: \$3500 - \$4500



This bank sweetly portrays an intimate moment shared between a young girl and her beloved pet dog. Early hobbyists often wrongly referred to this bank as the "ping pong paddle" bank.



Lot 427
Trick Pony Bank

Made by Shepard Hardware Company
Buffalo, New York - Circa Early 1890's
Pristine with Great Patina
Estimate: \$1750 - \$2250

Lot 428
The Dog Tray Bank

Made by Kyser & Rex Company
Philadelphia, Pa. - Dated 1880
Excellent Condition
Estimate: \$3000 - \$4000

Gravity causes your coins to drop from the dog's gold tray into the bank's slot. This is a very difficult to find toy bank to add to one's collection.



Lot 429

'Spise the Mule - Boy Seated on Bench

Conventional Red, Yellow & Black Base
Made by the J. & E. Stevens Company
Cromwell, Connecticut - Circa 1890
Excellent Plus with Nice Patina
Estimate: \$700 - \$900

This bank exhibits very comical dynamic action when the tides are turned on the young disciplinarian as the mule swings his hind legs around and kicks him in the face.



Lot 430

'Spise the Mule - Jockey Version

Conventional Brown, Red & Yellow Base
Made by the J. & E. Stevens Company
Cromwell, Connecticut - Circa 1890
Excellent Plus Condition
Estimate: \$900 - \$1200

Coins wedged carefully into the jockey's mouth are deposited into the bank through the slot in the base when the activating button is pushed.



Lot 431

'Spise the Mule Bank - Boy Seated

Very Scarce Yellow & Red Base Color
Made by the J. & E. Stevens Company
Cromwell, Connecticut - Circa 1890
Excellent Plus with Vivid Color
Estimate: \$1500 - \$2000

The use of bright yellow for the principle base color makes for a very attractive production variation.
This particular example is highly superior in quality.



Lot 432

Bad Accident Bank

Made by the J. & E. Stevens Company
Cromwell, Connecticut - Circa 1890
Pristine Condition
Estimate: \$3000 - \$4000

A farmer is seen driving his mule cart along a rural dirt road. He eats a tempting slice of watermelon rather than keeping his eye on the road in front of him. Suddenly, a boy emerges from behind some foliage at the side of the road. This has the effect of frightening the mule, who rears backwards, toppling the cart and creating a "bad accident".





Lot 433
'Spise the Mule Bank - Boy Seated

Extremely Rare & Desirable White Mule
 Made by the J. & E. Stevens Company
 Cromwell, Connecticut - Circa 1890
 Excellent Condition
 Estimate: \$1500 - \$2000

There are very few extant specimens of the 'Spise bank that show it with an albino white mule. This presents a terrific opportunity to acquire a very scarce variant.

Lot 434
Butting Buffalo
 Made by Kyser & Rex Company
 Philadelphia, Pa. - Circa 1880
 Excellent Plus Condition
 Estimate: \$5000 - \$7000

Place your coin in the slot found directly behind the raccoon at the top of the tree stump. Pushing the lever down causes the buffalo's head to raise the boy up so he comes eye to eye with the little varmint. In the same action, your coin has been deposited.



Lot 435
'Spise the Mule - Boy Seated

Conventional Red, Yellow & Black Base
 Made by the J. & E. Stevens Company
 Cromwell, Connecticut - Circa 1890
 Pristine with Thick Paint
 Estimate: \$1500 - \$2000

This represents a spectacular "A" example of the 'Spise the Mule toy bank.





Lot 436
English Jolly Man Bank
 By Sydenham & McOustra Ltd.
 Produced and sold in the 1930's
 Pristine with Bright Paint
 Estimate: \$350 - \$450



Lot 437
Unusual Bakelite Jolly Bank
 Presented on a Wooden Base
 Unknown American Maker
 Probably Made Late 1930's
 Excellent State of Preservation
 Estimate: \$450 - \$550



Lot 438
Blue Shirt Jolly Man Bank
 By the Shepard Hardware Company
 Buffalo, New York - Circa 1890
 Excellent Paint and Patina
 Estimate: \$800 - \$1000



Lot 439
Aluminum Little Joe Bank
 Made by Starkie's Ltd. Company
 Great Britain - Circa Mid 1930's
 Illustrated in the Morphy Book
 Virtually Mint Condition
 Estimate: \$550 - \$750



Lot 440
Blue Shirt Uncle Tom Bank
 Made by Kyser & Rex Company
 Philadelphia, Pa. - Circa Late 1880's
 Presents as Excellent Condition
 (Some old overpaint in areas)
 Estimate: \$250 - \$350



Lot 441
Sambo Mechanical Bank
 By Sydenham & McOustra Ltd.
 Great Britain - Circa Late 1920's
 Excellent Bright Condition
 Estimate: \$450 - \$550



Lot 442
Greedy Boy Money Box
 Blue Shirt with Yellow Tie
 New Zealand - Circa 1930's
 Pristine Bright Condition
 Estimate: \$550 - \$750



Lot 443
Dinah Bank - Short Sleeves
 Made by John Harper Ltd. Company
 Willenhall, England - Circa 1910
 Pristine Plus and Bright
 Estimate: \$550 - \$750



Lot 444
Greedy Boy Money Box
 Green Shirt with Red Tie
 New Zealand - Circa 1930's
 Pristine Bright Condition
 Estimate: \$550 - \$750



Lot 445
Boys Stealing Watermelons

Made by Kyser and Rex Company
 Philadelphia, Pa. - Circa Mid 1880's
 Near Mint Paint - Great Highlights
 Estimate: \$7000 - \$9000

Two mischievous boys have come upon a watermelon patch guarded by a watchdog that has fallen asleep. One boy has already grabbed his prize. As he ducks through the fence, he turns to see whether his friend will also succeed at stealing a melon without waking the dog. However, when the operating lever is depressed, we witness the dog jump towards him just as he reaches his arm out. Foiled!!!!

Lot 446
Uncle Remus Bank

Made by Kyser and Rex Company
 Philadelphia, Pa. - Circa Mid 1880's
 Pristine with Rich Saturated Color
 Estimate: \$8500 - \$10,500

Uncle Remus has gotten into a neighbor's chicken coop where he tries to leave hurriedly with a free bird for his dinner. When the constable comes to arrest him, Remus retreats into the coop and snaps the door shut. Meanwhile, your coin has been deposited through the coin slot in the roof.



Lot 447

Darktown Battery Bank

Made by J. & E. Stevens Company
 Cromwell, Connecticut - Late 1890's
 Excellent Condition
 Estimate: \$1500 - \$2000

The Darktown Battery is one of the most celebrated toy banks in the hobby. The sports theme, vivid colors and dynamic action all contribute to its enduring popular appeal.





Lot 448
Joe Socko Knockout Bank
 Made by Straits Corporation
 Detroit, Michigan - Circa 1937
 Excellent Lithography
 Estimate: \$225 - \$275



Lot 449
Small & Large Calumet Banks
 By Calumet Baking Powder Company
 Chicago, Illinois - Pat. 'd Sept. 16, 1924
 Both are Very Superior Quality
 Estimate: \$175 - \$225



Lot 450
Popeye Knockout Bank
 Made by Straits Corporation
 Detroit, Michigan - Circa 1937
 Excellent Lithography
 Estimate: \$275 - \$325



Lot 451
Complete Set of Four Tin Banks
 Uncle Wiggily, Elephant, Monkey & Clown
 Made by the J. Chein Company
 New York City - All Circa 1940's
 Pristine to Near Mint Condition
 Estimate: \$225 - \$275



Lot 452
Very Rare Toboggan Bank
 Lead Alloy with Waterbury Clock
 Unknown American Manufacturer
 Probably Produced Early 1900's
 Excellent with Great Patina
 Estimate: \$3000 - \$4000

There are fewer than ten known extant specimens of the intricate Toboggan Bank. Coins roll down the steeply inclined curving track for deposit in the base.

Lot 453
Nestle's Automatic Chocolate Machine
 Unknown English Manufacturer
 Produced in the Late 1920's
 Near Mint with Cardboard Box
 Estimate: \$600 - \$800

The astonishing condition of this esoteric vending bank make this an acquisition for an advanced sophisticated collector.





Lot 454
Scotsman Bank without Verse
Made by Saalheimer & Strauss Co. Ltd.
Nuremberg, Germany - Ca. Late 1920's
Very Fine Lithography
Estimate: \$300 - \$400



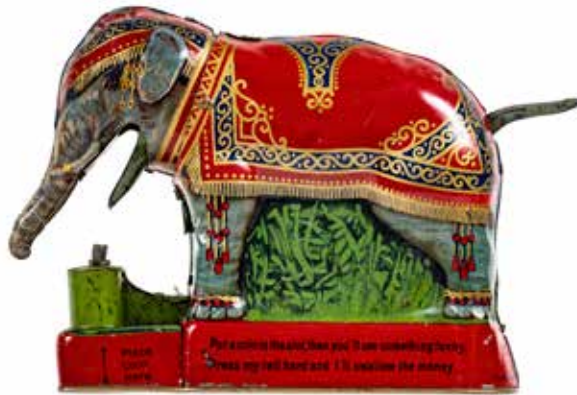
Lot 455
Rare Bonzo Bank without Verse
Made by Saalheimer & Strauss Co. Ltd.
Nuremberg, Germany - Ca. Late 1920's
Excellent Plus Lithography
Estimate: \$1500 - \$2000



Lot 456
Minstrel Bank with Verse
Made by Saalheimer & Strauss Co. Ltd.
Nuremberg, Germany - Ca. Late 1920's
Lithography Excellently Preserved
Estimate: \$300 - \$400



Lot 457
The Sentry Bank
Saalheimer & Strauss
Nuremberg, Germany - Ca. 1930
Pristine and Bright
Estimate: \$750 - \$950



Lot 458
Royal Trick Elephant Bank
Attributed to Maienthau and Wolf
Made in Germany - Circa 1910
Excellent Plus Condition
Estimate: \$900 - \$1200



Lot 459
Cross-Legged Minstrel Bank
Designed by J. Levy - London, England
Fabricated in Germany - Circa 1910
Excellent Condition
Estimate: \$800 - \$1000



Lot 460
Scarce Clown Bank
Made in England - Ca. 1930
Excellent Condition
Estimate: \$300 - \$500



Lot 461
Monkey and Parrot Bank
Made by Saalheimer & Strauss Co. Ltd.
Nuremberg, Germany - Ca. Mid 1930's
Pristine Bright Lithography
Estimate: \$300 - \$400



Lot 462
Rare Dressed Monkey with Tray
Made by Maienthau and Wolf
Germany - Circa Early 1910's
Very Fine Condition
Estimate: \$300 - \$400



Lot 463

Creedmoor Bank

By the J. & E. Stevens Company
Cromwell, Connecticut - 1880's
Excellent Plus and Bright
Estimate: \$600 - \$800

This is a genuinely exceptional example of Stevens' iconic depiction of a marksman shooting in the Creedmoor Rifle Competition.



Lot 464

William Tell Bank

By the J. & E. Stevens Company
Cromwell, Connecticut - Ca. 1897
Excellent Condition
Estimate: \$600 - \$800

As the legend goes, William Tell insulted an Austrian prince, but he was allowed to redeem himself if he could demonstrate his great marksmanship with the crossbow by shooting an apple from his son's head.



Lot 465

New Creedmoor Bank

By the J. & E. Stevens Company
Cromwell, Connecticut - Ca. 1890
Excellent with Outstanding Patina
Estimate: \$450 - \$650

The New Creedmoor Bank represents an ingenious design fusion of the William Tell figure with the base of the Creedmoor Bank.



Lot 466

Grenadier Bank

Made by J. Harper Ltd. Company
Willenhall, England - Circa 1895
Excellent Condition
Estimate: \$800 - \$1000

Historically, the National Rifle Association (NRA) of Great Britain staged some of the earliest rifle and pistol competitions in the world. Queen Victoria referred to participants in these matches as "grenadiers" and "volunteers".

Lot 467
Teddy and the Bear Bank
 Common Version with Brown Tree
 Made by the J. & E. Stevens Company
 Cromwell, Connecticut - Circa 1905
 Very Fine - Minor Chipping
 Estimate: \$700 - \$900



Lot 468
Indian Shooting Bear Bank
 with Rare White Colored Bear
 Made by the J. & E. Stevens Company
 Cromwell, Connecticut - Circa 1899
 Excellent Plus with Bright Color
 Estimate: \$2000 - \$3000



The Indian brave crouches down on his left knee to steady himself and take aim at the ferocious bear in front of him. Even though the animal is shot directly in the chest with your coin, he miraculously returns to life for each playing of the bank.

Lot 469
Teddy and the Bear Bank
 Scarce Version with Light Gray Tree
 Made by the J. & E. Stevens Company
 Cromwell, Connecticut - Circa 1910
 Pristine with Rich Color
 Estimate: \$2500 - \$3500

The imagery for this terrific coin-shooting bank derives from an actual bear hunt to which Teddy Roosevelt was invited. It took place in Mississippi in November 1902. It was on this excursion that the world learned of TR's compassion for animals and of his strong interest in conservation.





Lot 470
Hall's Excelsior - Red Roof
 Finished in Patriotic Colors
 Made by J. & E. Stevens Company
 Cromwell, Connecticut - Ca. 1876
 Pristine Plus Condition
 Estimate: \$1000 - \$1500



Lot 471
Hall's Excelsior - White Roof
 Finished in Cranberry Red
 Made by J. & E. Stevens Company
 Cromwell, Connecticut - Mid 1880's
 Excellent Plus Condition
 (Original Cashier Arms)
 Estimate: \$600 - \$800



Lot 472
Hall's Excelsior - Striped Roof
 Finished in Tan
 Made by J. & E. Stevens Company
 Cromwell, Connecticut - Ca. 1880
 Excellent Condition
 Estimate: \$450 - \$650



Lot 473
Novelty Bank
 Finished in Yellow, Red & Blue
 Made by J. & E. Stevens Company
 Cromwell, Connecticut - Ca. 1876
 Excellent Condition
 Estimate: \$700 - \$900



Lot 474
Mint Green Multiplying Bank
 with Red, Black & Brown Highlights
 Made by J. & E. Stevens Company
 Cromwell, Connecticut - Ca. 1890
 Excellent Paint - Original Mirrors
 Estimate: \$1500 - \$2000



Lot 475
Novelty Bank
 Finished in Gray, Red & Blue
 Made by J. & E. Stevens Company
 Cromwell, Connecticut - Mid 1880's
 Very Fine Condition
 Estimate: \$550 - \$750

Internally set angled mirrors create the optical illusion that each deposited coin is three coins rather than one.



Lot 476
Home Bank - Without Dormers
 Finished in Primary Colors - Tan Door
 Made by J. & E. Stevens Company
 Cromwell, Connecticut - Late 1870's
 Excellent Condition
 Estimate: \$1000 - \$1500



Lot 477
New Bank - Left Lever
 Made by J. & E. Stevens Company
 Cromwell, Connecticut - Ca. 1878
 Excellent Plus Condition
 Estimate: \$1250 - \$1750



Lot 478
Home Bank with Dormer Windows
 Finished in Patriotic Color - Tan Door
 Made by J. & E. Stevens Company
 Cromwell, Connecticut - Ca. 1876
 Very Fine Condition
 Estimate: \$950 - \$1250



Lot 479
Deluxe Polychrome Cupola Bank

Finished with Eight Different Colors
 Made by J. & E. Stevens Company
 Cromwell, Connecticut - Circa 1874
 Excellent with Great Patina
 Estimate: \$7000 - \$9000

To operate the Cupola Bank, you must push the dome down and lock it into place. Then, you must push the small brass knocker in the middle of the door. This causes the cupola to pop back up. An elegantly dressed banker leans forward to point out the coin deposit aperture.



Lot 480
Yellow Panorama Bank

Made by J. & E. Stevens Company
 Cromwell, Connecticut - Late 1870's
 Excellent with Very Bright Color
 Estimate: \$6000 - \$8000

With its dramatic roofline and its boldly pronounced eave, the Panorama Bank is certainly one of the most visually arresting architectural banks in the hobby. Coins deposited through the slot found on the back roof cause the panoramic cylinder to advance, changing from one scene to another.



Lot 481
Mule Entering the Barn Bank

Two-Tone Gray Barn Version
 Made by J. & E. Stevens Company
 Cromwell, Connecticut - Mid 1880's
 From the Haradin Family Collection
 Near Mint with Original Wood Box
 Estimate: \$4500 - \$6500

This action for this bank is exceptionally quick and clever. First you must place your coin between the hind legs of the mule. Pushing the activating button causes the mule to somersault forward, narrowly pitching your coin through the slot in the barn door. In the same moment, a small spotted dog runs out from his hiding place. This is a very very exceptional specimen of this bank.



Lot 482
Miniature Organ Bank
 Made by Kyser & Rex Company
 Philadelphia, Pa. - Circa 1882
 Excellent Condition
 (Clapper not working)
 Estimate: \$400 - \$600



Lot 483
Medium Organ Bank
 Made by Kyser & Rex Company
 Philadelphia, Pa. - Circa 1882
 Pristine with Bright Color
 Estimate: \$550 - \$750



Lot 484
Organ Bank - Cat & Dog
 Made by Kyser & Rex Company
 Philadelphia, Pa. - Circa 1882
 Near Mint and Very Vivid
 Estimate: \$1750 - \$2250



Lot 485
Organ Bank - Boy & Girl
 Made by Kyser & Rex Company
 Philadelphia, Pa. - Circa 1882
 Near Mint - Outstanding Color
 Estimate: \$1750 - \$2250

Lot 486
Organ Grinder and Performing Bear

Made by Kyser and Rex Company
 Philadelphia, Pa. - Circa Late 1880's
 Pristine Paint - Strong Highlights
 Estimate: \$3000 - \$4000

Bigoted sentiment against southerners informs the visual imagery portrayed in the Organ Grinder bank. A plantation owner with greatly diminished financial prospects is seen reduced to training a wild bear to offer shows for a penny. He's still wearing his confederate red and gray uniform because he's unable to buy new clothes in his impoverished state. This bank uses a powerful clockwork mechanism concealed within the building to effectuate its dramatic action.





Lot 487
Frog on Rock Bank
 Marketed as "Jug-O-Rum"
 Made by Kilgore Mfg. Company
 Westerville, Ohio - Circa 1930
 Excellent Plus Condition
 Estimate: \$1000 - \$1500



Lot 488
Frog on Round Base
 Scarce Lavender & Blue Color
 Made by J. & E. Stevens Company
 Cromwell, Connecticut - Ca. 1890
 Al & Nora Hancock Collection
 Excellent Plus Condition
 Estimate: \$950 - \$1250



Lot 489
Toad on Stump Bank
 Dark Green Toad Version
 Made by J. & E. Stevens Company
 Cromwell, Connecticut - Ca. 1890
 Excellent Plus Condition
 Estimate: \$500 - \$700



Lot 490
Billy Goat Bank
 Very Rare Period Example
 Made by J. & E. Stevens Company
 Cromwell, Ct. - Pat.'d July 26, 1910
 Al & Nora Hancock Collection
 Excellent with Good Patina
 Estimate: \$2500 - \$3500



Lot 491
Rabbit in Cabbage Bank
 Marketed as "Flop Ears"
 Made by Kilgore Mfg. Company
 Westerville, Ohio - Late 1920's
 Excellent with Little Chipping
 Estimate: \$1000 - \$1500



Lot 492
Owl Turns Head Bank
 Bird with Gray & White Feathers
 Made by J. & E. Stevens Company
 Cromwell, Connecticut - Ca. 1890
 Excellent Plus with Original Eyes
 Estimate: \$400 - \$500



Lot 493
Owl Bank - Slot in Book
 Marketed as "Blinky the Owl"
 Made by Kilgore Mfg. Company
 Westerville, Ohio - Late 1920's
 Excellent Painted Surface
 Estimate: \$600 - \$800



Lot 494
Doll's Head Bank - White Egg
 A Desirable Lead Alloy Toy Bank
 Unknown American Manufacturer
 Produced and Sold Late 1920's
 Al & Nora Hancock Collection
 Near Mint & Very Bright
 Estimate: \$550 - \$750

A very rare example with working bellows.



Lot 495
Mammy and Child Bank

Bright Red Dress Color
 Made by Kyser & Rex Company
 Philadelphia, Pa. - Ca. Mid 1880's
 Excellent with Original Spoon
 Estimate: \$6000 - \$8000

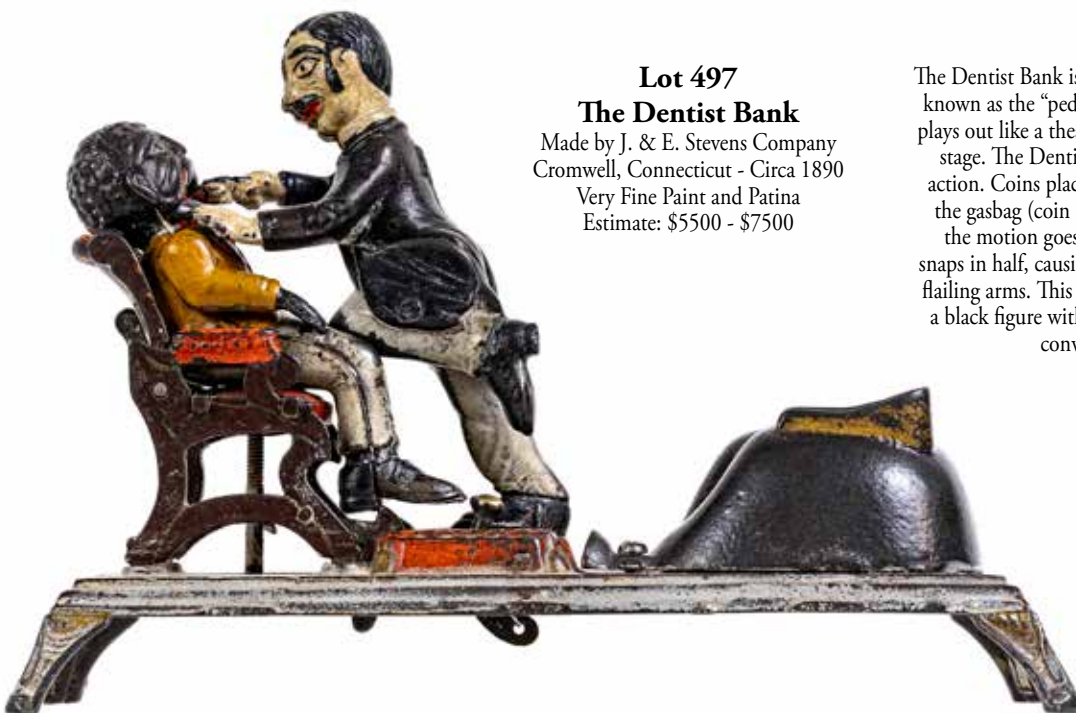
Originally marketed as "The Baby Mine" bank, the Mammy and Child is a classic in every way. Ask one hundred collectors to compose a list of their ten favorite mechanical banks and I'd lay odds that the Mammy appears on virtually every list.



Lot 496
Chimpanzee Bank

Made by Kyser & Rex Company
 Philadelphia, Pa. - Circa Early 1880's
 Bank presents as Excellent Plus
 (see condition report below)
 Estimate: \$6000 - \$8000

Charles Darwin and his theory of human evolution from primates figures prominently in the backstory for the Chimpanzee Bank. Here, we find a mathematically savvy chimp dressed as a cashier/accountant notating your deposits in his ledger book. As coins are deposited, a bell sounds loudly. A small portion of the red on the left side of structure has old restoration. This is a very typical repair for this particular bank.



Lot 497
The Dentist Bank

Made by J. & E. Stevens Company
 Cromwell, Connecticut - Circa 1890
 Very Fine Paint and Patina
 Estimate: \$5500 - \$7500

The Dentist Bank is part of a subset of toy mechanical banks known as the "pedestal banks". That is to say, the narrative plays out like a theatrical production on a tiny miniaturized stage. The Dentist Bank is imbued with great dynamic action. Coins placed in his coat pocket are deposited into the gasbag (coin acceptor) when the lever is pressed and the motion goes into effect. Simultaneously, the chair snaps in half, causing the patient to tumble backwards with flailing arms. This is one of the few toy banks that presents a black figure without significant racial prejudice beyond conventional dramatic humor.



Lot 498

Picture Gallery Bank

Made by Shepard Hardware Company
Buffalo, New York - Circa Late 1880's
Very Fine with Some Chipping
Estimate: \$7500 - \$9500

The Picture Gallery Bank has two distinct functions. Firstly, as with all toy banks, the owner can save money inside of it. Fascinatingly, it's second use was to teach and reinforce the alphabet for the small children who had the good fortune to play with such a bank. This rare bank featured as part of Shepard's "Excelsior Series", which they produced in the late 1880's and early 1890's.



Lot 499

Punch and Judy Bank - Small Letters

Made by Shepard Hardware Company
Buffalo, New York - Circa Late 1880's
Excellent Plus Condition
Estimate: \$2000 - \$3000

With its vibrant primary colors, the Punch and Judy Bank is certainly one of the most appealing toy banks ever designed. To set the bank for operation, you must pull the lever out and place your coin on Judy's dustpan. Depressing the smaller lever causes Punch to move towards Judy, admonishing her sternly with his disciplinary stick. This represents a highly superior example of the bank.



Lot 500

Circus Bank

Made by Shepard Hardware Company
Buffalo, New York - Circa Late 1880's
Excellent Plus with Vivid Color
Estimate: \$9000 - \$12,000

Finding an intact and un-repaired Circus Bank is a rare and unusual event. With its broad surface areas and vigorous action, the Circus Bank is often found in poor condition. To set the bank in motion, the operator must turn a crank. Then, watch the clown in his cart as he circles the sawdust of the circus ring. The horse gallops up and down three times during this revolution. The clown's left arm raises up as he approaches the coin laid down for deposit. Mechanically considered, the Circus Bank is one of the most complex and ingenious toy banks ever devised.



Lot 501

Made by J. & E. Stevens Company

Cromwell, Ct. - Circa Mid 1880's
 Pristine Paint and Patina
 Estimate: \$1250 - \$1750

The seated bull dog waits patiently for you to balance coins upon his snout. Pulling his tail down and backwards causes his mouth to open to swallow your penny. He is much obliged to you for feeding him. This is a very superior specimen of the Bull Dog Bank.



Lot 502

Monkey and Coconut Bank

Made by J. & E. Stevens Company
 Cromwell, Ct. - Circa Mid 1880's
 Excellent Plus Condition
 Estimate: \$2000 - \$2500

This clever chimp drops pennies from his right hand into his coconut. In the same moment, he rolls his eyes and laughs at you.



Lot 503

Rare Giant in Tower Bank

Made by John Harper & Co. Ltd.
 Willenhall, England - Mid 1890's
 Very Good Plus Condition
 Estimate: \$2500 - \$3500

Notice the coin aperture is super wide to accommodate large old English pennies. Pushing a coin thru the slot causes the ogre to lean forward to see who's knocking on his door.



Lot 504

Boy Robbing the Bird's Nest

Made by J. & E. Stevens Company
 Cromwell, Ct. - Circa Early 1900's
 Very Good Paint and Patina
 Estimate: \$2500 - \$3500

An inquisitive boy comes across a bird's nest in a low-lying branch of a tree. Daringly, he shimmies up the berry-laden vines in an attempt to see what, if anything, is in the nest. However, the tree limb breaks with the weight of his body, causing he and the nest to fall to the ground.

Lot 505

Tommy Bank

Made by John Harper & Co. Ltd.
Willenhall, England - Circa 1914
Excellent Plus Paint and Patina
Estimate: \$3000 - \$4000

The soldier, lying prone on his belly, is seen taking target practice from behind a small ridge of camouflaged brush. The origin of the term "Tommy" is widely disputed, however, the most common interpretation is that it derives from "Tommy Atkins", which is slang for a common soldier in the British Army.



Lot 506

English Football Bank

Made by John Harper & Co. Ltd.
Willenhall, England - Late 1890's
Excellent Plus with Rich Color
Estimate: \$2250 - \$2750

Sports themed banks are always very popular with collectors. Here, we find a player taking a penalty shot at the goal, however, he kicks large English copper pennies rather than a soccer ball.



Lot 507

Boy Scout Camp Bank

Made by J. & E. Stevens Company
Cromwell, Ct. - Circa Mid 1910's
Excellent Condition
Estimate: \$2500 - \$3500

Three young scouts have set up camp. One boy, hat in hand, emerges from the tent. A second is seen preparing dinner and stands over the cauldron. The third scout has unfurled the troop flag and raises it when the operating lever is pressed.





Lot 508
Clown, Harlequin and Columbine

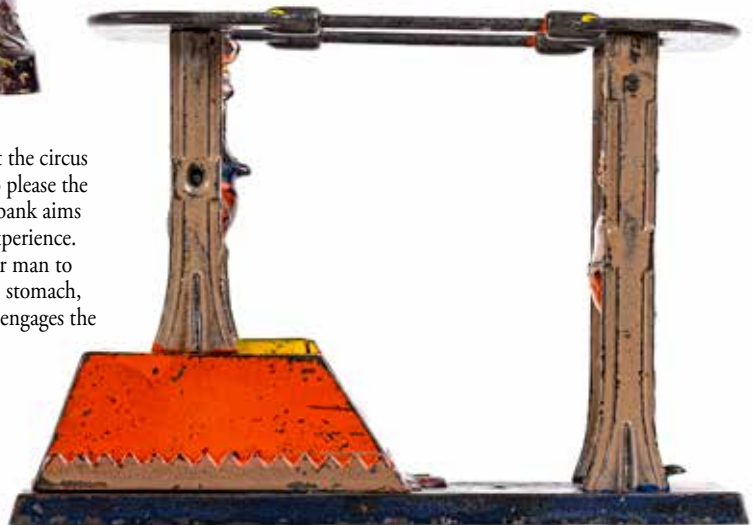
Very Early Secondary Production
 Made of Iron & Aluminum
 Made by J. & E. Stevens Company
 Cromwell, Ct. - Circa 1930's
 Excellent Plus Condition
 Estimate: \$7500 - \$9500

Thematic imagery for this bank derives from a British comedy genre known as "harlequinade". Typically, such stagings were performed in silent pantomime. When the bank is operated, the clown (dressed in white) spins Columbine away from the lecherous grasp of the masked harlequin, once again saving her innocence. Original period examples of this bank date to 1900. Good examples sell in excess of \$100,000. This is perhaps the earliest example of secondary production for this bank that we have ever seen.

Lot 509
Acrobats Bank

Made by J. & E. Stevens Company
 Cromwell, Ct. - Circa Late 1880's
 Excellent Plus Condition
 Estimate: \$3500 - \$4500

Watching the tumbling acrobats at the circus is a wonderment that never fails to please the crowd. This dynamically colored bank aims to recreate that "mouth agape" experience. Pressing the lever causes the taller man to flip up and kick his partner in the stomach, sending him into a backflip, which engages the trigger for coin deposit.



Lot 510
Boy on Trapeze Bar

a.k.a French's Automatic Bank
 By J. Barton Smith Company
 Philadelphia, Pa. - Circa 1891
 Pristine and Very Bright
 Estimate: \$2250 - \$2750

Gravity and the weight of various coins bring the somersaulting acrobat to life. When adjusted properly, the manufacturer claimed that he would make one revolution for a penny; two turns for a nickel and three full turns for a quarter.

Lot 511
Uncle Sam Bank

By the Shepard Hardware Company
 Buffalo, New York - Late 1880's
 Pristine with Bright Paint
 Estimate: \$1750 - \$2250

In the long historical record of this wonderful hobby, the Uncle Sam Bank is the most iconic representation of mechanical banks, for certainly it is the most recognizable toy bank, even by those who are not collectors. Uncle Sam has appeared in countless advertisements for various savings institutions and the patriotic hues chosen for this bank are virtually synonymous with the moral values of the United States.





Lot 512
Mason Bank Trade Card
 Shepard Hardware Company
 Buffalo, New York - Ca. 1890
 Very Superior Preservation
 Estimate: \$800 - \$1200



Lot 513
Mason Bank
 Shepard Hardware Company
 Buffalo, New York - Pat.'d 1887
 Excellent with Bright Color
 Estimate: \$2500 - \$3500

In the Mason Bank, racism and visual racial slurring is right under our nose. The bricklayer, with his bulging muscles and bushy mustache, is meant as a depiction of Italian immigrants. While the hod carrier, with his flaming orange hair and his leprechaun physiognomy is clearly a bigoted reference of the Irish.



Lot 514
Confectionery Bank
 Made by Kyser and Rex Company
 Philadelphia, Pa. - Circa Early 1880's
 Presents as Excellent (candy drawer
 restored and tray re-attached)
 Estimate: \$5500 - \$7500

The Confectionery Bank evokes a nostalgia for what it must have felt like to shop for penny candy in the Victorian Era. The shopkeeper stands behind her counter waiting to fill your order from the drawers behind her. This is one of the prettiest banks ever created, and therefore, always a great hit with collectors.



Lot 515
Mama Katzenjammer Bank
 Made by Kenton Hardware Company
 Kenton, Ohio - Circa Early 1900's
 Very Good Condition
 Estimate: \$4500 - \$5500

The Katzenjammer Kids was an American comic strip created by Rudolph Dirks in 1897. It was later drawn by Harold Albert for thirty-five years from 1914 to 1949. The strip features twin brothers Hans and Fritz. They are always rebelling against authority, particularly that of their mother.

Lot 516
Calamity Bank

Made by J. & E. Stevens Company
Cromwell, Connecticut - Circa 1905
Excellent Paint with Strong Patina
Estimate: \$7500 - \$9500

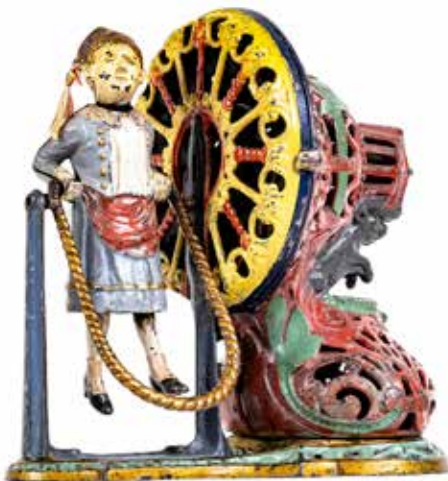


The Calamity Bank portrays collegiate football as it was played at the beginning of the 20th century. In this particular example, we find two defensive tacklers from Harvard (crimson details) taking down a running fullback from Yale (blue details). Wearing only nominal protective gear, many players sustained serious injuries. President Teddy Roosevelt viewed this situation as potentially very dangerous. In fact, he planned to incorporate the abolition of collegiate football as part of his platform for re-election in 1904. It's a good thing that his political advisors talked him out of it.

Lot 517
Girl Skipping Rope Bank
Scarce Light Blue Dress Color
Made by the J. & E. Stevens Company
Cromwell, Connecticut - Circa 1890
From the Ed Singer Collection
Pristine Perfect Condition
Estimate: \$17,500 - \$22,500



For most mechanical bank collectors, the Girl Skipping Rope represents the closest thing there is to a Holy Grail. In fact, the Mechanical Bank Collectors of America (MBCA) designated it as their mascot when the club was founded in the late 1950's. It is regarded as the most complex toy bank ever devised and brought to market. To operate the bank, you must give the mechanism a strong counter clockwise turn until you hear it lock into place. Pushing the lever downwards engages the powerful brass spring and iron flywheels, causing the girl to skip 6 or 7 times.





Lot 518

Kiltie Bank

Made by John Harper Ltd. Company
Great Britain - Circa 1931
Pristine Condition
Estimate: \$2250 - \$2750

A large English copper penny is necessary for the proper operation of this bank. American pennies, nickels or dimes do not work because they simply fall from the hand and do not enter the coin slot. Furthermore, it is interesting to note that the coin enters through a slot in the Scotsman's tartan sash, not through his mouth, as in the case in all other mechanical banks that represent a bust type bank with an extended hand. This is a superior and bright example.



Lot 519

Magician

Made by J. & E. Stevens Company
Cromwell, Connecticut - Early 1900's
Excellent Plus and Bright
Estimate: \$3500 - \$4500

The magician has ascended the stairs and waits patiently at his podium to make your pennies disappear beneath his top hat. In terms of its design, the Magician Bank is perhaps one of the most appealing banks ever devised and brought to market. This visual harmony stems from the fact that the bank's silhouette is a near perfect isosceles triangle.



Lot 520

Jolly Man Bank

Shepard Hardware Company
Buffalo, NY - 1880's
Pristine Condition
Estimate: \$1250 - \$1750

This is a superior and bright example.



Lot 521

Jolly Man Bank Box

Shepard Hardware Company
Buffalo, NY - 1880's
Very Fine Condition
Estimate: \$1250 - \$1750

This is a complete original box with intact lid.



Lot 522

Cat & Mouse Bank

Made by J. & E. Stevens Company
Cromwell, Connecticut - Ca. 1891
Excellent Condition
Estimate: \$1200 - \$1500

The design for the Cat & Mouse Bank is based on a Victorian mantle clock form. For certainty, the bank's imagery draws from the English nursery rhyme "Hickory, Dickory Dock". In this telling of the story, the cat and mouse play together.



Lot 523

Clown & Globe with Original Box

Made by J. & E. Stevens Company
Cromwell, Connecticut Circa 1880
Excellent Plus Condition
Box Very Good
Estimate: \$1750 - \$2250



Lot 524

Bismark Pig Bank

Made by J. & E. Stevens Company
Cromwell, Connecticut - Circa 1883

Excellent Plus Condition

Estimate: \$3500 - \$4500

The Bismark Bank is political satire at its best. In an effort to aid German farmers, Chancellor Otto Bismark placed a significant economic embargo on pork products. This had a very adverse effect on European and American pork producers. This ingenious bank points up their consternation with Bismark and his unfair trade policies. Instead of a Trojan Horse, we find a German politician emerge from the belly of the pig.

Lot 525

Initiating Bank - 1st Degree

Made by Mechanical Novelty Works
New Britain, Connecticut - Early 1880's

Excellent Condition

Estimate: \$4000 - \$6000

Three unlikely companions, a goat, a black male youth and a frog, comprise the visual imagery of this version of the Initiating Bank. In this iteration, the base has been expanded to accommodate three separately designed moving figures. Here, the goat butts the boy in the seat of his pants, causing him to lean forward and deposit your coins into the frog's mouth. This is a very nice example without any repairs and an intact baseplate. Very good, missing 1/2 the man's beard.



Lot 526

Patronize the Blindman and His Dog

Made by J. & E. Stevens Company
Cromwell, Connecticut - Ca. 1878

Excellent Plus Condition

Estimate: \$4000 - \$6000

At the end of the Civil War, in every small town in America (North & South), children would have encountered injured and maimed soldiers who had participated in the conflict. This bank embodies the Good Samaritan notions of doing for others who are less fortunate.



Lot 527

Pig in Highchair

Made by J. & E. Stevens Company
Cromwell, Connecticut - Circa 1897
Pristine Condition
Estimate: \$800 - \$1000



Lot 528

Afghanistan Bank

Made by Mech Novelty Works
New Britain, Connecticut - Mid 1880's
Excellent Plus Condition
Estimate: \$2500 - \$3500

This tiny bank is packed full with a huge amount of world political history. We find Great Britain (the lion) and Russia (the bear) confronting one another for strategic control at the Gate of Herat, an oasis city in the western part of Afghanistan. Even till the present time, hegemony has not been established by either nation in this area.



Lot 529

Atlas Bank

Unknown Maker
American - 1895
Excellent Condition
Estimate: \$2000 - \$3000

The capitalist sentiment "Money Moves the World" is just as accurate today as it was when this bank was first created. The wood and paper globe with only one tiny paper chip.



Lot 530

Pelican Bank

with Arabic Figure
Made by J. & E. Stevens Company
Cromwell, Connecticut - Ca. 1878
Excellent Plus Condition
Estimate: \$1500 - \$2000



Lot 531

Mosque Bank with

Brass Pattern Figure
Made by H. L. Judd Company
Wallingford, Connecticut - Circa 1885
Near Mint Condition
Estimate: \$2500 - \$3500

Clearly, the designers at Judd were well versed in Victor Hugo's tragic narrative of Quasimodo living in the bell tower of Notre Dame in Paris. However, here the hunchback is portrayed more as a misshapen ape than a human being. Place pennies squarely on the tray he holds above his head and he will happily caper inside the church to deposit your coins. His beloved Esmerelda can be seen as a finial on the rooftop clutching a wreath.



Lot 532

Springing Cat Bank

Designed and made by Charles Bailey
 Cromwell, Connecticut - Pat.'d July 18, 1882
 Excellent Condition
 Estimate: \$7000 - \$9000

Before Bailey went to work for the Stevens Company, he made a small group of detailed toy banks in lead for his own manufacture. The Springing Cat is one of the best. It portrays the cat pouncing on the tiny mouse that pushes your coin into the bank. This is an excellent example with an original wooden baseplate and trap.



Lot 533

Hen & Chicks Bank

White Hen
 Made by J. & E. Stevens Company
 Cromwell, Connecticut - Early 1900's
 Very Fine Condition
 Estimate: \$2250 - \$2750

The hen protects her chicks by tucking them under her formidable wings. Pulling the lever backwards causes the hen to open and close her beak, as if she is clucking. As the penny drops into the bank, a small hatchling emerges from beneath her breast feathers to surprise us.

Lot 534
Paddy and the Pig

Blue Coat
 Made by J. & E. Stevens Company
 Cromwell, Connecticut - Ca 1880's
 Pristine Condition
 Estimate: \$2500 - \$3500

The Paddy and the Pig bank plays on racist sentiment against the Irish. Absurdly, it was often suggested that the Irish farmer preferred the company of his pig to that of his wife. This bank seems to drive this repulsive thought home. They are both inebriated and the Irishman rolls around on the ground to regain control of the clever pig.





