



ANTIQUE TOYS AND BANKS



SATURDAY - DECEMBER 4TH 2021



RSL AUCTIONS

P.O. Box 635
Oldwick, NJ 08858
908-823-4049
Cell 917-991-7352
FAX 908-823-4519
rslauctions@yahoo.com
rslauctionco.com

SPECIALISTS

Ray Haradin

Pittsburgh, PA
Banks, Toys, Soldiers, Tiffany Lamps
412-343-8733
raytoys@aol.com

Steven Weiss

New York, NY
Banks, Toys, American Folk Art, American Art & Sculpture
212-729-0011
sweiss57@icloud.com

Leon Weiss

Oldwick, NJ
Banks, Toys, American Folk Art and Door Stops
908-823-4049
Cell 917-991-7352
leonweiss@me.com

Julian Abernethy

Sr. Auction and Computer Specialist

Bre Day

Senior Auction Specialist
412-841-0623
bremarieday@gmail.com

Angela Weiss

908-823-4049
a.weiss@rslauctionco.com
Office Manger, Website and Shipping Coordinator

 [Facebook.com/RSL-Auction-Company](https://www.facebook.com/RSL-Auction-Company)

 @rslauctions



ANTIQUE TOYS AND BANKS

AUCTION #39 AFTERNOON SESSION

Saturday December 4th, 2021 following the Paul Cole II Sale
Approximately 1pm est Lots 350-656

WEBSITES:

rslauctionco.com LiveAuctioneers.com or BidSpirit.com

RSL Auctions
295 US Hwy 22 East
Suite 204 West
Whitehouse Station, NJ 08889
Look for "One Salem Square" Sign
Gallery Phone: 908-823-4049

PREVIEW:

Friday December 3rd, 2021 10am to 5pm
Saturday December 4th, 2021 8am to 10am
Or by appointment, please call (908) 823-4049
to reserve a time.

RSL complies with New Jersey Covid Protocols.

ABSENTEE AND PHONE BIDDING DEADLINE:

BIDS MUST BE RECEIVED BY
FRIDAY, DECEMBER 3rd 2021

MAIL BIDS TO:

RSL Auctions, PO Box 635, Oldwick, NJ 08858

CALL BIDS TO:

Leon Weiss 908-823-4049 - Cell 917-991-7352

FAX BIDS TO:

RSL Auctions 908-823-4519

PAYMENT & SHIPPING

Leon Weiss 917-991-7352

DIRECTIONS TO OUR GALLERY

295 US Hwy 22 East
Suite 204 West
Whitehouse Station, NJ 08889
908-823-4049

From New England and Northern New Jersey

Cross the Tappan Zee Bridge and continue West on 287/87 about 14 miles to 287 South. Take 287 South to Exit 21B and merge onto 78 West (Clinton). Go to Exit 24 Whitehouse/Oldwick. Turn left at the light (towards Whitehouse). Go exactly 2 miles and turn onto U.S. Highway 22 West. Go 1.4 miles, staying in the left lane and passing one traffic light (Merck Drive). Go to the second turnaround after that light and head East on U.S. Highway 22 for 150 feet. Turn right into parking lot. Sign reads "One Salem Square".

From New York City

Lincoln or Holland Tunnel to the New Jersey Turnpike South. Travel only a few miles to Exit 14A-C. Get onto Route 78 West (Clinton) to Exit 24 (Whitehouse/Oldwick). Turn left at the light (towards Whitehouse). Go exactly 2 miles and turn onto U.S. Highway 22 West. Go 1.4 miles, staying in the left lane and passing one traffic light (Merck Drive). Go to the second turnaround after that light and head East on U.S. Highway 22 for 150 feet. Turn right into parking lot. Sign reads "One Salem Square".

Southern New Jersey and Points South

Take New Jersey Turnpike or Garden State Parkway to 287 North. It is about 20 - 22 miles to Route 78 West (Exit 21-B). Go to Exit 24 Whitehouse/Oldwick. Turn left at the light (towards Whitehouse). Go exactly 2 miles and turn onto U.S. Highway 22 West. Go 1.4 miles, staying in the left lane and passing one traffic light (Merck Drive). Go to the second turnaround after that light and head East on U.S. Highway 22 for 150 feet. Turn right into parking lot. Sign reads "One Salem Square".

Philadelphia Area

Take 95 North and cross into New Jersey. Exit for Route 31 (about 4 miles into New Jersey). Take 31 North about 20 miles to Route 78 East. (There are some traffic circles on 31 North – Always stay on 31 North until you hit Route 78 East). Take exit 18 and merge onto U.S. Highway 22 East and go 4.1 miles and turn into the parking lot. Sign out front reads "One Salem Square".

From the West

Take 78 East and cross into New Jersey. Take Exit 18 and merge onto U.S. Highway 22 and go 4.1 miles and turn into the parking lot. Sign out front reads "One Salem Square".

Please note that items sold in this catalog do not represent the personal views of RSL and it's employees.

ANTIQUE TOYS AND BANKS

SATURDAY DECEMBER 4TH, 2021
FOLLOWING THE PAUL COLE II SALE
APPROXIMATELY 1PM EST LOTS 350-656



Accepting quality consignments
for future sales.

CONDITION GRADES

Mint (M)	98%+
Near Mint (NM).....	97-98%
Pristine.....	95-96%
Excellent (EX)	90-94%
Very Fine (VF)	85-89%
Very Good	80-84%

Prices realized may be downloaded
from liveauctioneers.com
immediately after the sale closes.

RSL AUCTIONS: CONDITIONS OF SALE

1. RSL Auctions acts as an agent for the seller. The contract for the sale of the property is between the seller and the buyer. No statements made within this catalog or made by a representative of or employee of RSL Auctions shall be deemed to be a warranty, representation, or assumption of liability with respect to the property's age, condition, size, quality, variety, importance, provenance, or historical relevance. All property is sold "as is".

2. All sales are final.

3. Buyers are responsible for satisfying themselves concerning the condition of the property.

4. The auctioneer will be solely responsible for determining the bidding increments.

5. The auctioneer will be the final judge in deciding which bidder has won an item. In the event of a dispute, the auctioneer at his discretion, shall decide whether to reopen bidding or not.

6. LiveAuctioneer's Bids: in order to bid through LiveAuctioneers, you must first register on LiveAuctioneer's website. RSL Auctions reserves the right, in our sole discretion, to refuse your registration or participation in the auction or to revoke your permission to participate before, during or after the sale.

6A: Bidspirit Bids - in order to bid through Bidspirit.com you must first register on the Bidspirit.com website. RSL Auctions reserves the right, in our sole discretion, to refuse your registration or participation in the auction or to revoke your permission to participate before, during or after the sale.

7. Absentee Bids: If you are unable to attend the actual sale, RSL Auctions are authorized to execute bids on your behalf. Complete an Absentee Bid Form and return to RSL Auctions BEFORE the absentee bid deadline. We cannot accept "Buy" bids. In the event that two identical bids are received, the first bid form received by RSL Auctions will have preference.

8. Phone Bids: Phone bids will also be accepted. To qualify for a phone line the same procedure of authorization required for an absentee bid is required. A backup bid in the event a party cannot be reached by phone is not required, but strongly recommended. There are a limited number of phone lines available. In the event that there are more requests than lines available, preference will go to the highest bidding parties. In the event, whether human or technical, that a phone call is not made, disconnected or the bidder cannot be reached at the number left, the backup bid will be executed. RSL Auctions cannot guarantee that phone bids will be executed.

9. Submit all questions regarding upcoming auction items at least 48 hours prior to the date of auction. We will make every effort to answer all submitted questions in a timely manner. However, we cannot guarantee that questions submitted within 48 hours of the auction date will be answered prior to the auction.

10. The buyer is required to pay New Jersey sales tax 7% unless exemption is allowed under the laws regulating such tax. Dealers must present a valid tax ID certificate in order to qualify for exemption.

11. Payment may be made by cash, personal check or credit card. A 23.5% buyer's premium will be added to all successful bids. A 3.5% discount will be applied for payment made by cash or personal check making the buyer's premium 20% if paid within 15 days. **Discount only applied to payment made within this time frame.** An additional 5% will be added to bids made through liveauctioneers.com. An additional 4% will be added to all bids made through Bidspirit.com. RSL Auctions reserve the right to hold all merchandise paid by check until payment has been cleared by the bank. This may take up to one month.

12. All accounts are to be settled within 15 days of the end of the sale.

13. There will be a \$50 charge added to all wire transfers.

14. In the event property is not paid for in full, RSL Auctions may pursue one or more of the following rights or remedies. A) charge interest at 2% per month of the unpaid balance. B) hold the defaulting buyer liable for the total amount due and commence legal proceedings for its recovery together with interest, legal fees and costs to the fullest extent permitted under applicable law. C) cancel the sale D) resell the property E) pay the seller the amount up to the net proceeds payable in respect to the amount bid by the default buyer minus one bid. F) or to take such other action as we deem necessary or appropriate.

15. Shipping may be arranged through RSL Auctions. A shipping fee of \$20 per lot, \$80 per 5 lots or \$150 per 10 lots is charged plus the incurred postage and insurance. International and large items will incur additional costs. Shipped items may take up to 45 days to be delivered. Due to Coronavirus, we strongly recommended that all International Packages be shipped via DHL Worldwide Express. We will gladly obtain a shipping quote for customers.

However, if you prefer to ship via the US Postal Service or any other carrier, we will make the arrangements. RSL Auction Company will not guarantee timely delivery or be financially responsible for those shipments.

Additional Shipping and Handling charges for all packages are listed above.

16. RSL Auctions has the capability to ship to international bidders. **By law, RSL Auctions cannot, and will not, declare lesser values for any international purchases and all shipments will include the invoice with purchase totals including the buyer's premium and shipping cost. All international bidders are responsible for knowing their country's laws on importing items and for paying all customs and duties on the items.**

17. RSL Auctions are not responsible for any typographical errors or omissions in this catalog or price key. Photographs in this catalog are of the actual objects being sold but are not shown to scale.

18. RSL Auctions reserve the right to refuse admission, participation in or request the departure of any person/persons.

19. RSL Auctions reserves the right to withdraw any property before, during and after the sale and shall have no liability whatsoever for such withdrawal.

20. In no event will our liability to a purchaser exceed the purchase price actually paid. RSL Auctions will not be responsible for any errors or failures to execute bids placed online or for any errors or omissions in connection therewith including, without limitation, errors or failures caused by (i) a loss of connection to the internet or the LiveAuctioneers Online Platform software by either RSL Auctions or the client; (ii) a breakdown or problem with RSL Auctions or LiveAuctioneers' Online Platform software; or (iii) a breakdown or problem with a client's internet connection, mobile network or computer.

21. RSL Auction's content on LiveAuctioneers' Online Platform ("Web Site" or "Platform") is published and maintained by LiveAuctioneers. If you are a registered user of LiveAuctioneers, the LiveAuctioneers' Privacy Policy governs your agreement with LiveAuctioneers with respect to LiveAuctioneers' collection, use, storage, and disclosure of your personal information. RSL Auctions does not control and is not responsible for the information and privacy practices of LiveAuctioneers on the LiveAuctioneers' Web site, which is operated entirely by LiveAuctioneers. You agree that RSL Auctions and its affiliates will not be responsible for, and that you release RSL Auctions and its affiliates from, any and all claims, liabilities, damages, losses and expenses related to unauthorized access to or use of, or any security breach relating to or affecting, LiveAuctioneers collection, use, storage, and disclosure of your personal information.

22. If any part of these Conditions of Sale are found by any court to be invalid, illegal or unenforceable, that part shall be discounted and the rest of the conditions shall continue to be valid to the fullest extent permitted by law.

23. By bidding at auction, whether present in person or by agent, by written bid, telephone or other means, the buyer indicates acceptance of these Conditions of Sale.

24. The rights and obligations with respect to the Conditions of Sale shall be governed by the laws of the state of New Jersey.

25. All rights reserved. Entire contents Copyright 2021. RSL Auctions Copyright includes, but not limited to, print, media, microfilm and electronic media, such as CD-ROM's and online computer services.



Lot 350
Art Nouveau Cylinder Bank

Austrian - 1920 - 3.25" Tall
Excellent Plus
Estimate: \$400 - \$600

This fantastic Art Nouveau bank is made of Sterling Silver and hallmarked. It has images of a Frog on tree stem and a Long Beaked Bird on winding flower stem. A great addition to any collection.



Lot 351
Young Boy & Girl

German - 1920's - 4.25" Tall
Very Fine
Estimate: \$375 - \$500

This bank is made of thin spelter and tin.



Lot 352
Santa with Pack Cylinder Bank

Probably Austrian - 1920 - 3.125" Tall
Very Fine
One Pedestal Foot with Dent
Estimate: \$225 - \$275
Silver Plated on tin or bass.



Lot 353
Saloon Car with Placard

German - 1930's - 5" Long
Pristine
Estimate: \$250 - \$350

We have not seen this silvered lead automobile before. You could attach a placard or small calendar to it.



Lot 354
Jeweled Treasure Chest

with Keylock Trap
German - 1890 - 2.75" Long
Pristine
Estimate: \$275 - \$375

This treasure chest is delicate and extremely detailed.



Lot 355
Convertible Car Bank

Marked Germany
1920's - 5.125" Long
Excellent
Estimate: \$175 - \$225



Lot 356
Gnome in Shoe

German - 1920's - 4.5" Long
Very Fine
Estimate: \$175 - \$225

A scarce souvenir bank for the German Palace "Schloss Fredenstein Gotha". Built in the middle 17th Century in the town of Gotha.



Lot 357
Seated Cat with Bow

German - 1920's - 3.75" Tall
Very Fine
Estimate: \$225 - \$300



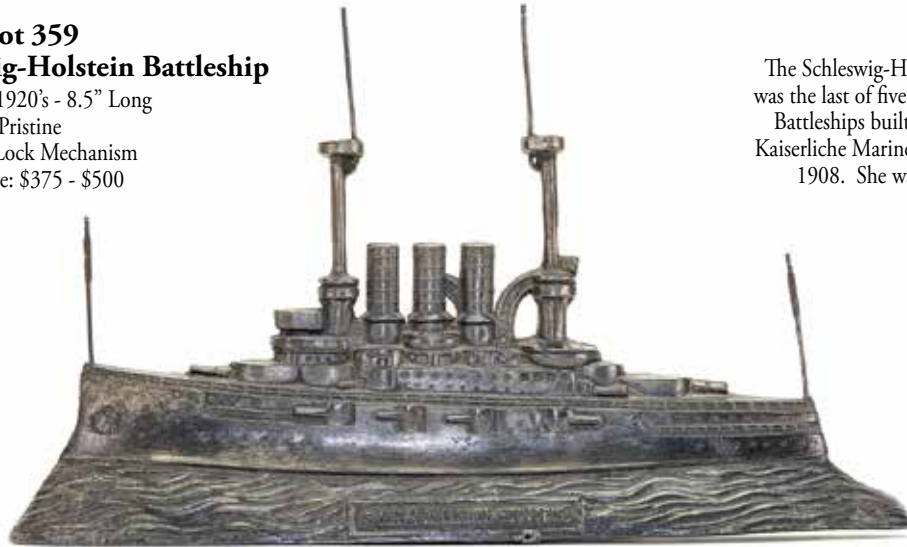
Lot 358
Cat Emerging from Shoe

German - 1920's - 4.75" Long
Excellent Plus
Estimate: \$175 - \$225

Lot 359
S. M. S. Schleswig-Holstein Battleship

German - 1920's - 8.5" Long
 Pristine
 Missing Lock Mechanism
 Estimate: \$375 - \$500

The Schleswig-Holstein Battleship was the last of five Deutschland-class Battleships built by the German Kaiserliche Marine commissioned in 1908. She was 419' Long.



Lot 360
Ceramic Motorcycle Bank

Austrian - 1930/1940's - 6.5" Long
 Pristine
 Estimate: \$200 - \$275

This is a Pristine example. The coin slot is under the bank.



Lot 361
Multitone Ceramic Automobile

Austrian - 1920's - 5.75" Long
 Excellent
 See Description
 Estimate: \$175 - \$225

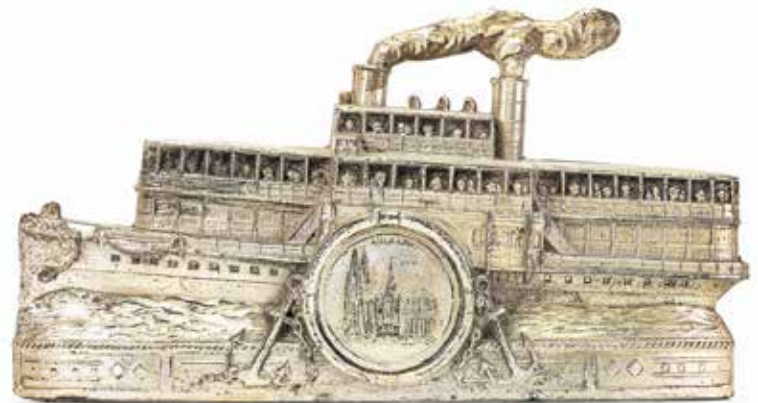
The coin slot and one wheel well with chipping.



Lot 362
Four Funnel Ocean Liner

German - 1920's - 4" Long
 Very Fine
 See Description
 Estimate: \$150 - \$200

The original trap has been sealed shut. A souvenir for Hamburg.



Lot 363
Two Funnel River Boat

German - 1920's - 7.5" Long
 Excellent Plus
 Missing Lock Mechanism
 Estimate: \$125 - \$175



Lot 364
Postal Money Bank

Made by K. & W. Siegarist
Bern, Switzerland - 1930 - 3.5" Tall
Pristine
One Roof Dent
Estimate: \$75 - \$125

Made for "Amor" Chokolade-Confiserie of Bern.
This company appears to have been bought by Nestle.



Lot 365
Sentry Post

Switzerland - 1930 - 4.125" Tall
Near Mint
Estimate: \$125 - \$175
Made for "Amor" Chocolat Company of Bern.



Lot 366
Postal Money Bank

Made by C. Siegerist-Cloor
Bern, Switzerland - 1920's - 3.625" Tall
Excellent Plus
Estimate: \$100 - \$150

This Postal Box is about 5 - 10 years older and slightly taller than the previous one.



Lot 367
Sentry at Post

German - 1920's - 3.5" Tall
Pristine
Estimate: \$150 - \$225
Made of Silvered Tin and Brass.



Lot 368
Buffalo

German - 1920's - 5.75" Long
Pristine
Estimate: \$1250 - \$1750
This is a very scarce larger scaled German Spelter bank in Pristine Condition. A great addition to any collection.



Lot 369
Souvenir Silvered Lead Bank

German - 1920's - 4.5" Tall
Excellent
Estimate: \$300 - \$400
Marked "Das Warder Zwerg Perkco". Perkco of Heidelberg was a noted jester and court dwarf of Elector Palatine Charles III of Heidelberg. Perkco died in 1735.



Lot 370
The Hobo with Sandwich Board

English - 1910 - 6" Tall
Near Mint
Frank Kidd Collection
Estimate: \$1400 - \$1800

This is an extremely rare and very desirable English tin bank. To our knowledge only a handful are known.



Lot 371
Santa at Chimney

The Miller Bank Service Co.
Chicago, IL - 1925 - 4.5" Long
Near Mint
Estimate: \$350 - \$450

This is a far superior and bright example of the bank.



Lot 372
The Wizard

English - 1910 - 5.75" Tall
Pristine
Estimate: \$900 - \$1200

Another fantastically lithographed English tin bank. It is quite scarce and desirable.



**Lot 373
Floral Safe**

Kyser & Rex
Philadelphia - 1880's - 4.625" Tall
Very Fine
Estimate: \$200 - \$300

**Lot 374
Security Safe Deposit**

American - 6.625" Tall
Excellent Plus
Minor surface rust on tin.
Estimate: \$150 - \$200
Made of tin and cast iron, this is a bright example.



**Lot 375
Large Treasure Chest**

German - 1895 - 6.75" Long
Pristine
Estimate: \$400 - \$600

We have not seen this Bank/Alms Box before. The English translation for the German text is, "Association of Traveling Merchants in Germany". The key to lock the bank is missing.



**Lot 376
Russian Registering Bank**

Russian - 1895 - 6.5" Tall
Excellent Plus
Estimate: \$400 - \$600

This registering bank takes the form of a safe and is quite impressive to display.



**Lot 377
Olympic Flagpole Bank**

Marked A.B.H.N.S. / Rosin Patent
European - 1910 - 26" Tall
Pristine
Estimate: \$350 - \$450

The flag can be raised on this bank, similar to raising the flag of the country of Olympic Champion for varied events. This bank has medallions for Discus, Running, Rowing and Soccer. It appears to be pre World War I. A great historical bank.



**Lot 378
Russian Registering Bank**

Russian - 1915 - 5.75" Tall
Excellent Plus
Estimate: \$500 - \$700

This is an extremely detailed bank with sculpted images on both sides. It is in the form of a safe.



Lot 379
Two Animals

A. C. Williams
Ravenna, OH - 1915 - 4.75" - 5" T
Fine
Estimate: \$100 - \$150



Lot 380
Dromedary

German - 1930 - 4.75" Tall
Excellent Plus
Estimate: \$100 - \$150



Lot 381
Prancing Horse / Rooster

A. C. Williams
Ravenna, OH - 1920 - 4.5" - 4.75" T
Excellent Plus
Estimate: \$100 - \$150



Lot 382
Polish Rooster - Lead Pattern

Ober Mfg. Co.
Chagrin, Falls, OH - 1905 - 5.375" T
Excellent
Estimate: \$700 - \$900

This appears to be a painted lead pattern for the bank. The feather details are crisp.

Lot 383
Seal on Rocks

Arcade Mfg. Co.
Freeport, IL - 1920 - 4.25" L
Near Mint
Estimate: \$350 - \$450

A superior and bright example of the bank.



Lot 384
Lion Bank - Nickel Plated

Arcade Mfg. Co.
Freeport, IL - 1920's - 5" L
Pristine
Estimate: \$275 - \$375

The Lion Bank - Tail Left is quite scarce in a nickel plated finish.



Lot 385
Two Kids

John Harper Co.
Chicago, IL - 1905 - 4.5" T
Very Fine
Estimate: \$500 - \$700



Lot 386
The "Hairy" Buffalo

American - 1915 - 4.5" L
Very Fine
Needs a Cleaning
Estimate: \$300 - \$400

The "Hairy" Buffalo, probably by Ober Mfg. of Ohio is seldom seen. This example with red accents at its mouth and nostrils.



Lot 387
Mary & Little Lamb

American - 1895 - 4.375" T
Pristine
Frank Kidd Collection
Estimate: \$1400 - \$1800

This is a far superior and one of the finest known examples of this charming bank. It is thickly painted and vibrant.



Lot 388
Colorful Oxen

Kenton Hardware
Kenton, OH - 1910 - 6.5" L
Pristine
Estimate: \$400 - \$600

This is the still bank version of the oxen with moveable horns. It was probably done as an end of day exercise with a lone oxen.



Lot 389
Saddle Horse on Wheeled Platform

Probably by Ives, Blakeslee Company
Bridgeport, CT - 1890's - 8.25" Tall
Excellent
See Description
Estimate: \$9500 - \$12,500

This beautiful bank is one of the finest sculpted that we have ever seen. It is similar to Lot 500 (sold October 15, 2016 by RSL Auction Co.), but also very different. The differences include three leg positions, no stirrups and looser bridle straps. This example was found many years ago with little paint and has been professionally restored to resemble the one we previously sold. A chance to add a real beauty to your collection.

Lot 390
Battleship Indiana

J. & E. Stevens Co.
 Cromwell, CT - 1901 - 10.5" L
 Very Fine
 Two Cannons Replaced
 Estimate: \$950 - \$1250



Lot 391
Basket Puzzle Bank

Nicol Mfg. Co.
 Chicago, IL - 1895 - 3.75" Diameter
 Pristine
 Estimate: \$350 - \$450



Lot 392
Small Stop Sign

Brass Pattern
 Dent Hardware
 Fullerton, PA - 1920 - 4.5" T
 Pristine
 Estimate: \$600 - \$800
 This is an original brass pattern for the Small
 Stop Sign bank.



Lot 393
Large Battleship Main

Grey Iron Casting Co.
 Mount Joy, PA - 1900 - 6.75" L
 Excellent
 No Trap
 Estimate: \$600 - \$800

This is a brightly painted example
 that is missing its coin trap.





Lot 394
Give Me a Penny with Screw

Hubley Manufacturing Co.
Lancaster, PA - 1910 - 5.625" T
Excellent Plus
Estimate: \$200 - \$275



Lot 395
Mammy Hands on Hip

Hubley Manufacturing Co.
Lancaster, PA - 1925 - 5.25" T
Near Mint
Estimate: \$125 - \$175
A superior example.



Lot 396
Sharecropper (Toes One Foot)

A. C. Williams
Ravenna, OH - 1915 - 5.25" T
Excellent Plus
Estimate: \$150 - \$200



Lot 397
Boy Scout

A. C. Williams
Ravenna, OH - 1915 - 5.875" T
Very Fine
Estimate: \$150 - \$200

This is a very scarce version painted brown
(like Boy Scout Scarf & Buckle)



Lot 398
Baseball Player

Multicolor Example
A. C. Williams
Ravenna, OH - 1910 - 5.75" T
Pristine Plus
Estimate: \$700 - \$900

A far superior example of the bank, in fact,
one of the finest known specimens.



Lot 399
Soldier / Minuteman

Hubley Manufacturing Co.
Lancaster, PA - 1905 - 6" T
Pristine
Estimate: \$400 - \$600

A superior example of the bank.



Lot 400
Policeman

Arcade Mfg. Co.
Lancaster, PA - 1925 - 5.5" T
Pristine Plus
Estimate: \$400 - \$600

This is a far superior and bright example.



Lot 401
Policeman Safe

John Harper Co.
Chicago, IL - 1905 - 5.25" T
Fine
Estimate: \$1750 - \$2250

John Harper sculpted and produced some of the finest
still banks ever made. This Policeman Safe has a black
background with silver and red highlights.



Lot 402
Mulligan the Cop

A. C. Williams
Ravenna, OH - 1910 - 5.75" T
Pristine
Estimate: \$350 - \$450



Lot 403
Auto - Four Passengers

A. C. Williams
Ravenna, OH - 1910 - 5.75" L
Frank Kidd Collection
Near Mint
Estimate: \$1200 - \$1500

This is without question one of the finest examples ever found. From the famed Donal Markey Collection to the Frank Kidd Collection.



Lot 404
Seated Monkey with

Civil War Era Hat
American - 1920's - 4.25" T
Frank Kidd Collection
Near Mint
Original Hat
Estimate: \$900 - \$1200

This is a later production and very rare bank by an unknown manufacturer. Possibly a prototype from A. C. Williams.
This example retaining the only known original hat.



Lot 405
Two Faced Devil

A. C. Williams
Ravenna, OH - 1905 - 4.25" T
Frank Kidd Collection
Pristine Plus
Estimate: \$1000 - \$1500



Lot 406
The Eggman

Ober Mfg. Co.
Chagrin Falls, OH - 1908 - 4.125" T
Excellent
Estimate: \$1750 - \$2250

The Eggman Bank is based on William Howard Taft the 27th President of the United States. This example is far better than average.

Lot 407
Armoured Car

A. C. Williams
Ravenna, OH - 1915 - 6.75" L
Frank Kidd Collection
Near Mint & Bright
Estimate: \$2500 - \$3500

This is perhaps the finest known specimen of this scarce A. C. Williams bank. It is thickly painted, bright and the wheels have practically no play wear. Provenance Donal P. Markey and Frank Kidd.





Lot 408
State Bank - Miniature

Kenton Hardware
Kenton, OH - 1899 - 3" T
Pristine
Estimate: \$150 - \$200



Lot 409
One Story House

J. & E. Stevens Co.
Cromwell, CT - 1885 - 3.25" T
Donal Markey Collection
Pristine Plus
Estimate: \$350 - \$450



Lot 410
City Bank

Grey Iron Casting Co.
Mount Joy, PA - 1903 - 3.25" T
Excellent Plus
Estimate: \$400 - \$600



Lot 411
Cupola Bank - Small

J. & E. Stevens Co.
Cromwell, CT - 1870's - 3.25" T
Very Fine
Estimate: \$150 - \$200



Lot 412
Crown Bank - Small

J. & E. Stevens Co.
Cromwell, CT - 1890 - 3" T
CIBB#219-J
Excellent Plus
Estimate: \$500 - \$700

This is an excellent and colorful example.



Lot 413
Cupola Bank - Medium

J. & E. Stevens Co.
Cromwell, CT - 1875 - 4.5" T
Excellent
Estimate: \$350 - \$450

This is a scarce painted variation



Lot 414
Midget Bank

John Harper Co.
England - 1910 - 2.625" T
John Haley Collection
Pristine
Estimate: \$600 - \$800



Lot 415
One Story House

J. & E. Stevens Co.
Cromwell, CT - 1880's - 3.25" T
Very Fine & Bright
Estimate: \$350 - \$450

This is perhaps the most interesting paint variation of this bank that we have seen. This example held together by a screw.



Lot 416
Fort Bank

Kenton Hardware
Kenton, OH - 1910 - 4.125" T
Excellent Plus
Estimate: \$275 - \$375



Lot 417
Domed Mosque - Large

Small Door
Grey Iron Casting Co.
Mount Joy, PA - 1905 - 5.125" T
Pristine
Estimate: \$400 - \$600

This is an excellent and bright example.



Lot 418
Domed Mosque - Medium - Green

Grey Iron Casting Co.
Mount Joy, PA - 1905 - 4.25" T
CIBB# 38-a
Pristine
Estimate: \$400 - \$600

A superior, bright and the book example.



Lot 419
Domed Mosque - Large

Cupid on Door
Grey Iron Casting Co.
Mount Joy, PA - 1905 - 5.125" T
Excellent Plus
Estimate: \$700 - \$900



Lot 420
Columbia Administration Building

Second Smallest - 5.75" T
Kenton Hardware
Kenton, OH - 1895
Pristine
Estimate: \$500 - \$700

This example is in Excellent and Bright Condition.
Retains its original trap.



Lot 421
World's Fair Administration Building

American - 1893 - 6" T
Very Fine
Estimate: \$550 - \$750



Lot 422
Tin Cottage

German - 1920 - 4.25" L
Excellent Plus
Estimate: \$375 - \$500

We have not seen this variegated tin bank before. It has a typical German key lock trap underneath.



Lot 423
Little Brown Church

Souvenir Savings Bank
The Bloom Mfg. Company
Nashua, IA - 1930's - 6" L x 4.75" T
Pristine

Estimate: \$350 - \$450

It is made of brass and has a keylock trap underneath.



Lot 424
American Tin Cupola Bank

George Brown Company
Connecticut - 1880 - 4.375" T
Rich Garthoeffner Collection
Pristine
Estimate: \$700 - \$900

This is a far superior and bright example of the bank and quite possibly the finest known example.



Lot 425
German Chalet with Weathervane

Gebruder Bing
Germany - 1905 - 7.25" T
Donal Markey Collection
Pristine
Estimate: \$2000 - \$3000

This is one of the prettiest Bing building banks that we have seen. Overall it is in Pristine Condition, but missing 1" of the fencing at the rear.



Lot 426
Double Door Bank

A. C. Williams
Ravenna, OH - 1910 - 5.5" T
Excellent Plus
Estimate: \$225 - \$300



Lot 427
State Bank - Straight Letters

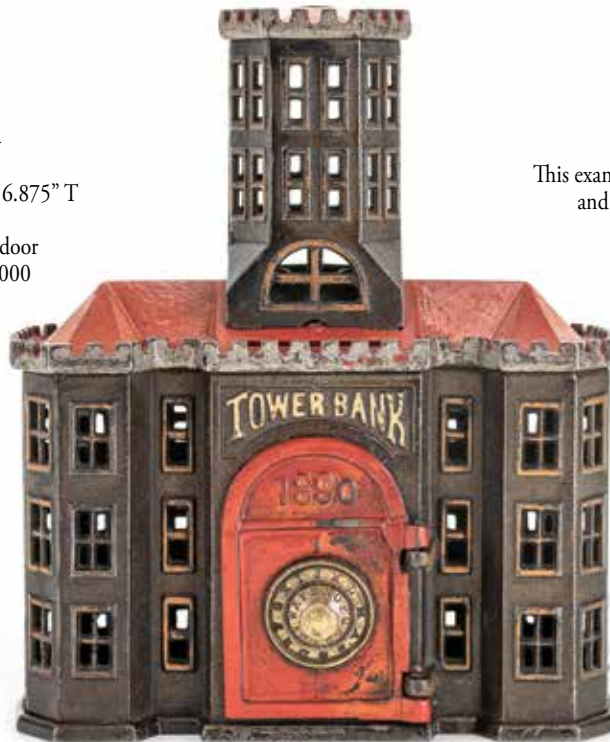
Kyser & Rex
Philadelphia, PA - 1890's - 5.375" T
Pristine Plus
Estimate: \$275 - \$375

The bank with great Pyramid Shaped highlights on the roof.

Lot 428
Tower Bank

Kyser & Rex
Philadelphia, PA - 1890's - 6.875" T
Pristine Overall
Tiny inpaint on front door
Estimate: \$1500 - \$2000

This example is in beautiful and bright paint.



Lot 429
Tower Bank

John Harper Co.
England - 1905 - 9.25" T
Pristine Plus
Estimate: \$750 - \$950

This is a far superior and bright example.

Lot 430
Tower Bank - Brass

John Harper Co.
England - 1905 - 8.75" T
Near Mint
Estimate: \$700 - \$900

This brass Tower Bank is significantly different than what is typically seen. It is 1/2" shorter, it has different spire columns and the bricks are delineated through the banks surface. It is marked "Made in England" under the base.





Lot 431
Patriotic Cupola - Large

J. & E. Stevens Co.
Cromwell, CT - 1875 - 5.5" T
Excellent Plus
Estimate: \$600 - \$800

This is an Excellent and Bright example that has a fantastic gold stenciled roof.



Lot 432
Marietta Silo

American - 1920's - 5.5" T
Donal Markey Collection
Near Mint Plus
Estimate: \$700 - \$900

This is a superior example of the bank.
The Marietta Silo Company of Marietta,
Ohio was incorporated in 1916.



Lot 433
Home Bank on Legs

Made by Ray Harpel
Sinking Springs, PA - Dated 1920 - 5.25" T
Very Fine
Estimate: \$350 - \$450

Not much is known about Mr. Ray Harpel at Sinking Springs, except that he loved painting colorful banks.



Lot 434
English Villa Bank

John Harper Co.
England - 1905 - 4" T
Rich Garthoeffner Collection
Pristine
Estimate: \$550 - \$750

This is a wonderful, thickly japanned example.
It is significantly better than usual.



Lot 435
Temple Bar - Aluminum

Marked with Raised Letters
"Alfred 1907"
England - 1907 - 3.875" T
Excellent
Estimate: \$550 - \$750

We have never seen either an aluminum version or one marked "Alfred 1907" before. A chance to add an oddity to your collection.



Lot 436
Domed Bank - Large

Scarce Green & Gold
A. C. Williams
Ravenna, OH - 1910 - 4.75" T
Excellent Plus
Estimate: \$250 - \$350

The two tone green stain with gold paint examples are very scarce.



Lot 437
Gingerbread House

European - 1910's - 3.875" T
Excellent Plus
Estimate: \$1000 - \$1500

This is a wonderful example with beautiful painted highlights.
It retains its original key lock trap.



Lot 438
Moody & Sanky Bank

A.K.A. "Hold the Fort"
Smith & Egge
American - 1870 - 5" T
Excellent
Estimate: \$1500 - \$2000

D. L. Moody was a famous American evangelist and Ira D Sanky was the musical coordinator for their evangelical campaigns within the United States and abroad.



Lot 439
Ironmaster House on Legs

Kyser & Rex
Philadelphia, PA - 1884 - 4.5" T
Pristine
Lacks the Trap
Estimate: \$1750 - \$2250

This is a superior example of the bank.



Lot 440
State Bank - Multicolor

Kyser & Rex
Philadelphia, PA - 1890's - 5.625" T
Very Fine
Estimate: \$500 - \$700

Multicolor State Banks by Kyser & Rex are quite scarce.
This example with green, blue, gold and brown paint.



Lot 441
Home Bank - Shallow

J. & E. Stevens Co.
Cromwell, CT - 1870's - 5.25" T
Excellent
Estimate: \$1250 - \$1750

Early building banks made by J. & E. Stevens are colorfully painted and beautiful. This example utilized yellow, blue and brown. The patent date is partially present in gold.



Lot 442
Crown Bank - Large

J. & E. Stevens Co.
Cromwell, CT - 1870/80's - 5" T
Donal Markey Collection
Pristine Plus
1" hairline crack in roof
Estimate: \$3000 - \$4000

This Crown Bank is in Pristine Plus, bright, colorful paint condition. It is an exceptional example.



Lot 443
Crown Bank - Large

J. & E. Stevens Co.
Cromwell, CT - 1870/80's - 5" T
Donal Markey Collection
CIBB 217-c
Pristine Plus
Estimate: \$3500 - \$4500

We have never seen this Apple Green and Brown painted example before. It is the example in Robert & Shirley Peirce's book "Cast Iron Building Banks", CIBB #217-c on page 163. A great addition to even the most serious building bank collection.



Lot 444
Home Bank - Shallow

J. & E. Stevens Co.
Cromwell, CT - 1870's - 5.25" T
Donal Markey Collection
CIBB 222-b
Pristine
Estimate: \$2000 - \$3000

Another book example bank that used to hail from the collection of famed collector/dealer Mr. Donal P. Markey. It can be found on page 168, CIBB #222-b.



**Lot 445
Palace Bank**

Ives, Blakeslee Company
Bridgeport, CT - 1885 - 7.5" T
Excellent
See Description
Estimate: \$750 - \$950

A wonderful painted example. The original spire is broken, but sets in place well.



**Lot 446
State Bank - Largest**

Scarce Version with Lettering
on top of Different Front Windows
Kenton Hardware
Kenton, OH - 1900 - 8.5" T
Excellent Plus
Estimate: \$800 - \$1000

Perhaps 1 in 40 are found with this front panel.



**Lot 447
Columbia Tower**

Grey Iron Casting Co.
Mount Joy, PA - 1897 - 6.875" T
Excellent Plus
Estimate: \$550 - \$750



**Lot 448
"Light of the World" Lighthouse**

Marked "David C. Cook"
Publishing Co. - Elgin - IL
1940's - 9.625" T
Donal Markey Collection
Near Mint
Estimate: \$300 - \$400

This example is made of aluminum and in Near Mint Condition. It has a keylock trap underneath.



**Lot 449
Eiffel Tower**

Sydenham & McOustra
England - 1908 - 8.75" T
John Haley Collection
Excellent
Estimate: \$600 - \$800



Lot 450
Folk Art Cottage with Fence

Probably English - 1920's - 16.5" T

Pristine

Estimate: \$800 - \$1000

This is a charming folk art wooden bank that was done by a skilled artisan.

Lot 451
The Home Savings Bank

Painted Dormers - Multicolor

American - 1905 - 10.5" T

Excellent Plus

Missing Tin Inserts

Estimate: \$900 - \$1200

This example was made for the "Colorado Savings Bank" of Denver, Colorado. Painted examples of these banks are scarce.





Lot 452
Brown & White Cab

Arcade Mfg. Co.
Freeport, IL - 1925 - 9" L
Very Fine
See Description
Estimate: \$550 - \$750

Brown & White toy Cabs are very scarce. The white of the cab is mostly repainted. All brown paint and wheels in original paint.



Lot 453
"The Yellow Line" Cab

Arcade Mfg. Co.
Freeport, IL - 1925 - 9" L
Excellent
Estimate: \$700 - \$900

This is a scarce version with advertising for "The Yellow Line" on its roof top.



Lot 454
Andy Gump "348" Car

Arcade Mfg. Co.
Freeport, IL - 1925 - 7.25" L
Fine
See Description
Estimate: \$450 - \$600

Most of the red on this car has been well repainted.



Lot 455
Double Decker Bus

Kenton Hardware
Kenton, OH - 1930 - 10" L
Very Fine
See Description
Estimate: \$300 - \$400

This is the eight window version. The rear steps and railing have been replaced.



Lot 456
"The Elgin" Street Sweeper

Hubley Mfg. Co.
Lancaster, PA - 1928 - 8.5" L
Very Good
Estimate: \$1500 - \$2000

This is one of the hardest Hubley automotive toys to find.
It retains all its original parts.



Lot 457
John Deere "Van Brunt" Drill

Vindex Toy Co.
Belvidere, IL - 1930 - Length
Near Mint
Estimate: \$3000 - \$4000

This is perhaps the hardest of the Vindex Toy Farm line to acquire.
This example is in Near Mint and Bright Condition.



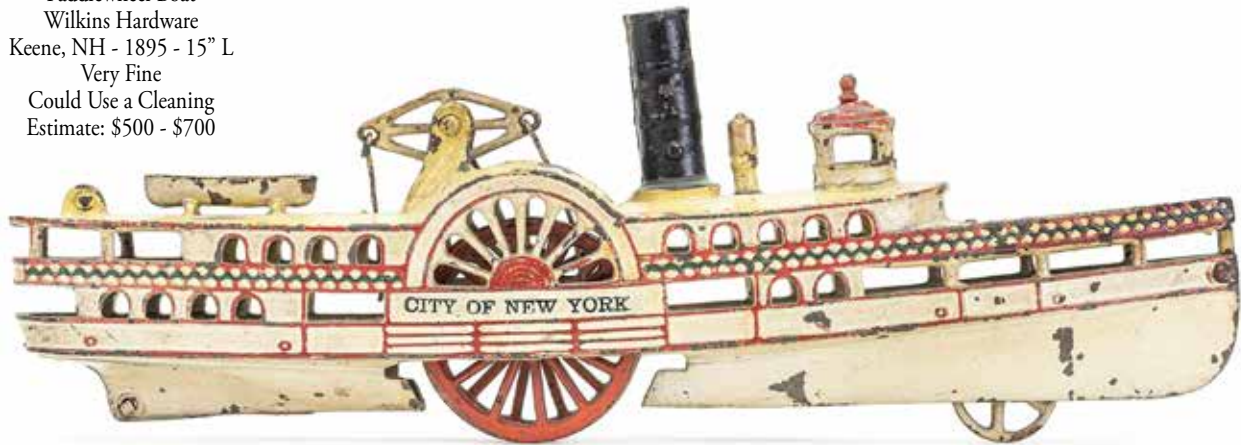
Lot 458
Open Windup Coupe

Structo Toy Co.
Freeport, IL - 1925 - 15.5" L
Excellent Plus
See Description
Estimate: \$400 - \$600

This toy is in superior, bright and good working condition. One rear wheel well must be secured with a screw and nut. Missing celluloid windscreen.

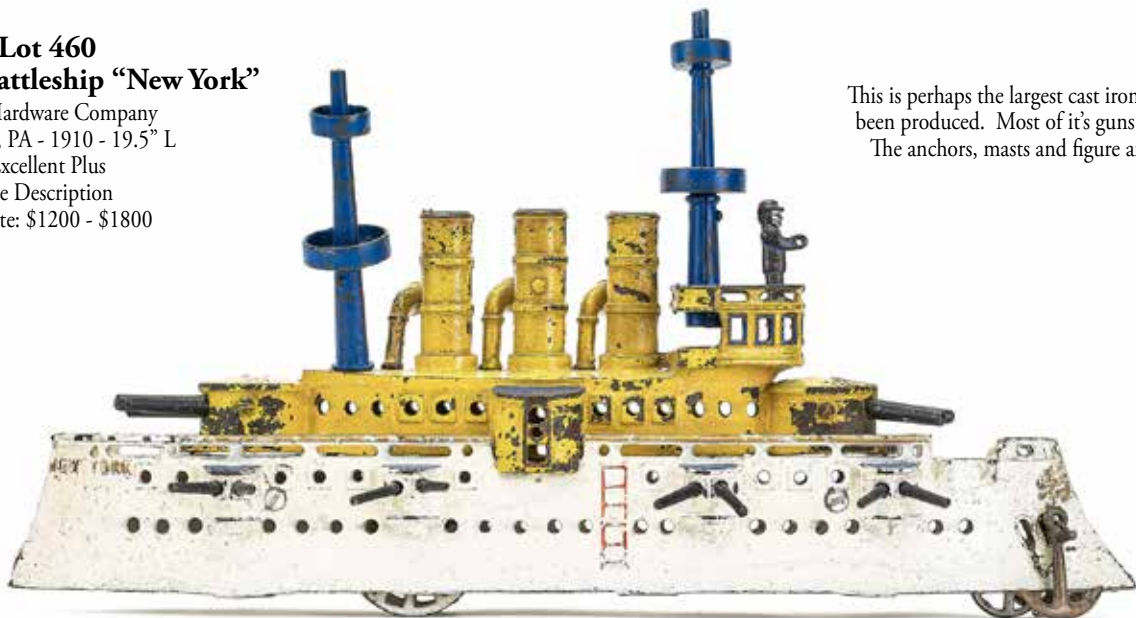
Lot 459
City of New York

Paddlewheel Boat
 Wilkins Hardware
 Keene, NH - 1895 - 15" L
 Very Fine
 Could Use a Cleaning
 Estimate: \$500 - \$700



Lot 460
Ram Front Battleship "New York"

Dent Hardware Company
 Fullerton, PA - 1910 - 19.5" L
 Excellent Plus
 See Description
 Estimate: \$1200 - \$1800



This is perhaps the largest cast iron boat to have been produced. Most of its guns are original. The anchors, masts and figure are original.

Lot 461
Leviathan Ocean Liner

Gebruder Bing
 Germany - 1925 - 13" L
 Excellent
 See Description
 Estimate: \$800 - \$1000



Overall in Excellent, Bright and good working condition. It is missing its tin rudder and rear flag.



Lot 462
Model T Coupe Deluxe

with Rumble Seat
Arcade Mfg. Co.
Freeport, IL - 1930 - 6.5" L
Pristine
Estimate: \$400 - \$600

A superior and bright example in scarce red paint.



Lot 463
Yellow Cab

Arcade Mfg. Co.
Freeport, IL - 1928 - 8" L
Excellent Plus
Estimate: \$450 - \$650

Lot 464
"Victory" Clockwork Locomotive

Ives, Blakeslee Company
Bridgeport, CT - 1880's - 8.75" L
Very Fine
Estimate: \$1000 - \$1500

This toy is in Very Fine, Bright and good working condition. A classic Ives, Blakeslee Locomotive.



Lot 465
Blue Stake Truck

Champion Toys
American - 1930 - 7.5" L
Pristine
Estimate: \$300 - \$400



Lot 466
Dump Truck

Hubley Mfg. Co.
Lancaster, PA - 1930 - 5.25" L
Near Mint
Estimate: \$300 - \$400



Lot 467
Miniature Pony Cart

German - 1915 - 5.375" L
Near Mint Plus
Estimate: \$200 - \$300

This toy is in virtually Mint, unused condition.



Lot 468
Lithographed Trolley

Orober Mfg.
Germany - 1920 - 7" L
Pristine
See Description
Estimate: \$300 - \$400

This toy is in Pristine and bright litho condition.
It needs a minor tweaking to get the mechanism working.



Lot 469
Tin Chiming Cylinder with Horse

Possibly Merriam Mfg.
Connecticut - 1880 - 4.75" L
Fine

Estimate: \$200 - \$275

Pull it along and a little sound is made.



Lot 470
Shoes Repaired and Shined

Steam Attachment
German - 1895 - 6.75" L x 5.5" T
Very Fine
Estimate: \$550 - \$750

This is an early, hand-painted, steam attachment depicting one cobbler repairing a boot and one cobbler shining a boot.
It has beautiful details and works well.



Lot 471
A "Wheelwright" Shop

Steam Attachment
German - 1910's - 11.5" L x 7.25" T
Excellent
Estimate: \$800 - \$1000

This toy depicts laborers putting the finishing touches on a new wheel and the other laborer working on finishing the next wheel to be made.
This toy has impressive scale and great color.



**CRÈME DE CRÈME
TWENTY TWENTY TWO**



March 5th, 2022



**Lot 472
Candy Scale**

Ives, Blakeslee Company
Bridgeport, CT - 1890 - 9.5" L

Very Fine

Estimate: \$1400 - \$1800

This is a scarce and beautiful late 19th Century piece of cast iron. It retains its original tray.

**Lot 473
Monkey on Tricycle**

Bell Toy

Ives, Blakeslee Company
Bridgeport, CT - 1890 - 8" T

Excellent Plus

Estimate: \$2750 - \$3750

This is the deluxe multicolor example. It is in Excellent Plus, bright and good working condition.



**Lot 474
Articulated Three Wheel Horse**

Ives, Blakeslee Company
Bridgeport, CT - 1890 - 8" T

Very Fine

See Description

Estimate: \$900 - \$1200

This is the scarce three wheel version without a platform. His right ear missing a tiny piece at the top.



Lot 475
Elephant Bell Toy

N. N. Hill Company
Connecticut - 1890 - 7" L
Fine
Estimate: \$400 - \$600

His trunk goes up and down, ringing the bell, as he is pulled along.



Lot 476
Columbus Bell Toy

J. & E. Stevens
Cromwell, CT - 1893 - 7" L
Excellent Plus
Estimate: \$600 - \$800

Made in conjunction with the "World's Fair" bank produced for the 400th Anniversary of Columbus' landing in America. A great "go" with the bank.



Lot 477
Black Boy Riding Duck

Bell Toy
Gong Bell Mfg. Co.
Connecticut - 1890 - 7.25" L
Excellent
Estimate: \$1200 - \$1500

Marked No. 58 on its platform, this is a very scarce and colorful bell toy. It has a fairy tale theme.

Lot 478
The Swan Chariot

J. & E. Stevens
Cromwell, CT - 1890 - 9" L
An Original Restored Toy
Estimate: \$900 - \$1200

A very scarce, fairy tale themed, pull toy that charms and delights. This example is well restored.





Lot 479
Doctor's Buggy
 Wilkins Hardware
 Keene, NH - 1890's - 10.5" L
 Very Good
 Estimate: \$350 - \$450



Lot 480
Hansom Cab
 Pratt & Letchworth
 Buffalo, NY - 1890 - 12" L
 Excellent
 Estimate: \$750 - \$950
 This is a nice, brightly painted example.

Lot 481
Double Goat Buckboard
 Harris Toy Co.
 Toledo, OH - 1890's - 13.75" L
 Excellent Plus
 Estimate: \$1750 - \$2250

This is an excellent, delicate and bright example of a scarce Harris toy. A great addition to any horse drawn collection.



Lot 482
Double Horse Ice Wagon
 Hubley Mfg. Co.
 Lancaster, PA - 1910 - 16" L
 Fine
 Estimate: \$375 - \$500
 Overall in Fine condition however, the front hitch has been varnished.

Lot 483
The Two Seat Brake

Hubley Mfg. Co.
 Lancaster, PA - 1906 - 16" L
 Excellent Plus
 Estimate: \$3500 - \$4500



This is an Excellent Condition, all original, example of the scarcest of the Hubley Brake Series.

Lot 484
The Elongated Three Seat Brake

Hubley Mfg. Co.
 Lancaster, PA - 1906 - 19" L
 Very Fine Overall
 See Description
 Estimate: \$3750 - \$5000



This is a wonderful example of the scarce, Elongated, Three Seat Brake by Hubley. All six figures are original and without issue. The middle seat back has been repaired and only the seat back portion repainted.

Lot 485
The Four Sear Brake

Hubley Mfg. Co.
 Lancaster, PA - 1906 - 28" L
 Very Fine Overall
 See Description
 Estimate: \$3500 - \$4500



This is a very fine example overall. All the figures are originals. Two women have repaint to the front of their dresses and inpaint to their faces. The driver's blanket has been 80% repainted. The front hitch is repainted.

Lot 486
Organ Grinder
Blinking Eye Clock

Bradley & Hubbard
 Connecticut - 1870's - 17" T
 Pristine Plus
 Estimate: \$3500 - \$4500

This example in superior, bright and good working condition. A great addition to any collection.



Lot 487
Lounging Lion
Blinking Eye Clock

Bradley & Hubbard
 Connecticut - 1870's - 10" L
 Very Fine
 See Description
 Estimate: \$2000 - \$3000

Another scarce cast iron Blinking Eye Clock. The mechanism is winding, but the clock dials are spinning too fast and eyes seem to need minor adjustment to blink.



Lot 488
Samurai Warrior
Blinking Eye Clock
Bradley & Hubbard
Connecticut - 1870 - 12.75" T
Excellent Paint
Mechanism Working Sporadically
Estimate: \$9500 - \$12,500

This is perhaps the hardest Blinking Eye Clock to find. To our knowledge there are only two known examples of this case clock. A great addition to any clock collection. It needs a minor adjustment to keep time well.



Lot 489
Large Cockatoo Doorstop

American - 1920 - 12.5" T

Excellent Plus

Estimate: \$500 - \$700

This is a wonderfully painted, heavy and striking to look at doorstop.

Lot 490
Bavarian Jester Clock and Candle Stand

German - 1890 - 14.25" T

Excellent Plus

See Description

Estimate: \$1200 - \$1500

We have never seen this charming clock before. Made of both a lead alloy with the bell arm of cast iron. The clock works, but the arm ringing the bell to acknowledge the hour is not working.





Lot 491
Flower Basket Doorstop

Hubley Mfg. Co.
Lancaster, PA - 1930 - 7.25" T
Excellent Plus
Estimate: \$150 - \$225



Lot 492
Koala Bear Doorstop

Designed by Taylor-Cook
Made by Hubley Mfg. Co.
Lancaster, PA - 1930 - 7.5" L
Excellent Plus
Estimate: \$550 - \$750



Lot 493
Two Quails Doorstop

Hubley Mfg. Co.
Lancaster, PA - 1930's - 5.75" T
Pristine
Estimate: \$250 - \$325

This is an excellent example of this scarce doorstop.



Lot 494
The Banjo Player

American - 1920's - 6.5" T
Pristine Plus
Estimate: \$1250 - \$1750



Lot 495
Popeye Doorstop

Hubley Mfg. Co.
Lancaster, PA - 1935 - 9" T
Excellent Plus
Estimate: \$1500 - \$2000

This is an excellent example of this bright and highly sought after doorstop. Popeye retains his original pipe.

Lot 496
Jerome Park Racers

James Fallows Company
 Philadelphia, PA - 1890 - 8.5" L
 Very Fine
 See Description
 Estimate: \$1200 - \$1500

This toy simulates an actual amusement park ride that was at the Jerome Avenue Amusement Park in the Bronx during the late 19th Century. The horses and figures are about 40 - 50% repainted. This is the scarce example with detachable figures.



Lot 497
Farmer Chasing His Sheep

James Fallows Company
 Philadelphia, PA - 1890 - 9" L
 Excellent
 Estimate: \$3000 - \$4000

This is one of the toughest Fallows articulated platform toys to acquire. It is in wonderful, all original, condition.



Lot 498
The Fighting Roosters

James Fallows Company
 Philadelphia, PA - 1890 - 9" L
 The Schroeder Collection
 Fine
 Estimate: \$1750 - \$2250

When pulled along these roosters peck at each other, ringing the central bell.





Lot 499
Monkey Ringing Bells

Ives, Blakeslee Company
Bridgeport, CT - 1890 - 7" T
Pristine
Estimate: \$2500 - \$3500

This is an all original, good working and bright example of this late 19th Century toy. The Monkey came to be of significant interest with the research of Charles Darwin and his theories of evolution.



Lot 500
Columbus Worlds Fair Egg

Ives, Blakeslee Company
Bridgeport, CT - 1893 - 7.25" T
Excellent Plus
See Description
Estimate: \$4500 - \$6500

This intricate and very delicate toy was made for the Columbian World's Fair held to celebrate the 400th Anniversary of Columbus' discovery of the New World (America). There are less than 10 known examples and this is one of the finest specimens. The pop up people have been well replaced.

Lot 501
General Butler Walker

Ives, Blakeslee Company
Bridgeport, CT - 1870's - 9.75" T
Excellent Plus & Bright
Estimate: \$2000 - \$2500



Ives, Blakeslee made a series of 9 walking figures. This one of Union General Benjamin Franklin Butler from Massachusetts. Post Civil War he was a businessman, politician, ultimately becoming Governor of Massachusetts in 1882.

Lot 502
Santa Claus Walker
with Original Box

Ives, Blakeslee Company
Bridgeport, CT - 1870's - 9.75" T
Pristine with Box
See Description
Estimate: \$3500 - \$4500



Another of the classic walking figures by Ives, Blakeslee Company. What child wouldn't have been happy to receive their very own walking Santa for Christmas. Overall, in Pristine Condition with its original cardboard box. The box near complete but with tears.



Lot 503
American Tin Water Tank

Altoph Bergmann
 New York City - 1880's - 22" L
 Very Fine
 See Description
 Estimate: \$2500 - \$3500

This is an impressive large scaled American Tin Toy. Water Tank / Sprinkler vehicles are extremely rare and desirable. This toy overall in Very Fine Condition, with substantial paint restoration. About 50% original and 50% restored.



Lot 504
"Groceries" Wagon

Merriam Mfg. Co.
 Durham, CT - 1880's - 18" L
 Excellent
 See Description
 Estimate: \$3500 - \$4500

This is a very scarce American Tin commercial vehicle of the late 19th Century. Produced by famed early toy maker Merriam Mfg. Co. of Durham, Connecticut. This example in classic Merriam colors (red, blue, white and black) and finished with horses having cloud tails. The horse is about 60% restored. Rare with moving side panels marked "Groceries".



Lot 505 Seesaw with House

Ives, Blakeslee Company
Bridgeport, CT - 1880 - 14" L x 12.5" T
Excellent
See Description
Estimate: \$7500 - \$9500

This is one of the rarest clockwork toys made by Ives, Blakeslee Company. To our knowledge two examples exist. Made of wood, tin, papier-mache and fabric. When wound, the boys seesaw up and down as their mother slowly emerges from the chimney; as if to call them in for dinner. Overall, in Excellent, good working condition. The boy's faces have been inpainted lightly and their clothes are excellent replacements.

Lot 506 Girl on a Swing with Box

Ives, Blakeslee Company
Bridgeport, CT - 1880 - 14.5" T
Pristine
Original Box with Tears
Estimate: \$7500 - \$9500

This is an exceptional, superior example of the classic clockwork toy by Ives, Blakeslee. Ives is considered the gold standard of late 19th Century American toy production. When wound, she happily swings back and forth for you. Made of wood, fabric and tin; the toy works well.

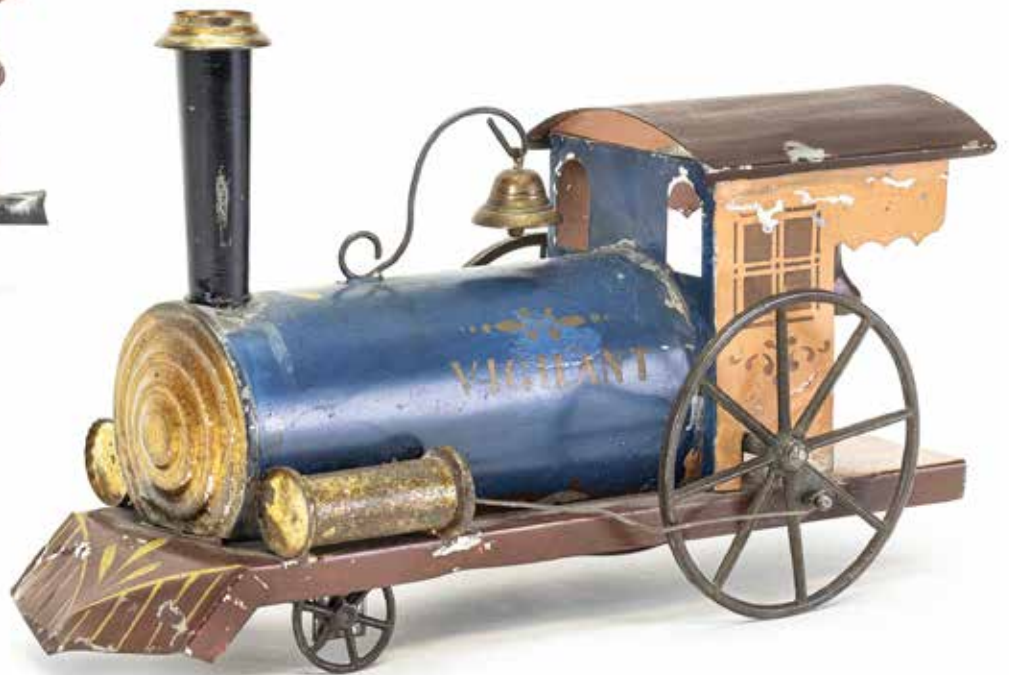




Lot 507
Vigilant Clockwork Locomotive
with Engineer

Merriam Mfg. Co.
 Durham, CT - 1875 - 9" L
 Pristine Plus
 Estimate: \$4500 - \$6500

This toy is in far superior, great working and colorful condition. It is quite scarce and it retains its original standing conductor.



Lot 508
Prospect Park Omnibus

Merriam Mfg. Co.
 Durham, CT - 1875 - 17" L
 Excellent Plus
 See Description
 Estimate: \$9500 - \$12,500

This Omnibus is made to resemble those that travelled through "Prospect Park", Brooklyn, New York in the period 1840 - 1900. It is another fantastic example of Merriam's classic designs, color schemes and horses with cloud tails. This is a true show stopper and worthy of any mantle. The horses with some minor repaint where they were reattached to the wire traces.

Lot 509
The "Hook Behind"

Ives, Blakeslee Company
Bridgeport, CT - 1880 - 17" L
Excellent
Her Clothes Slightly Frayed
Estimate: \$9500 - \$12,500

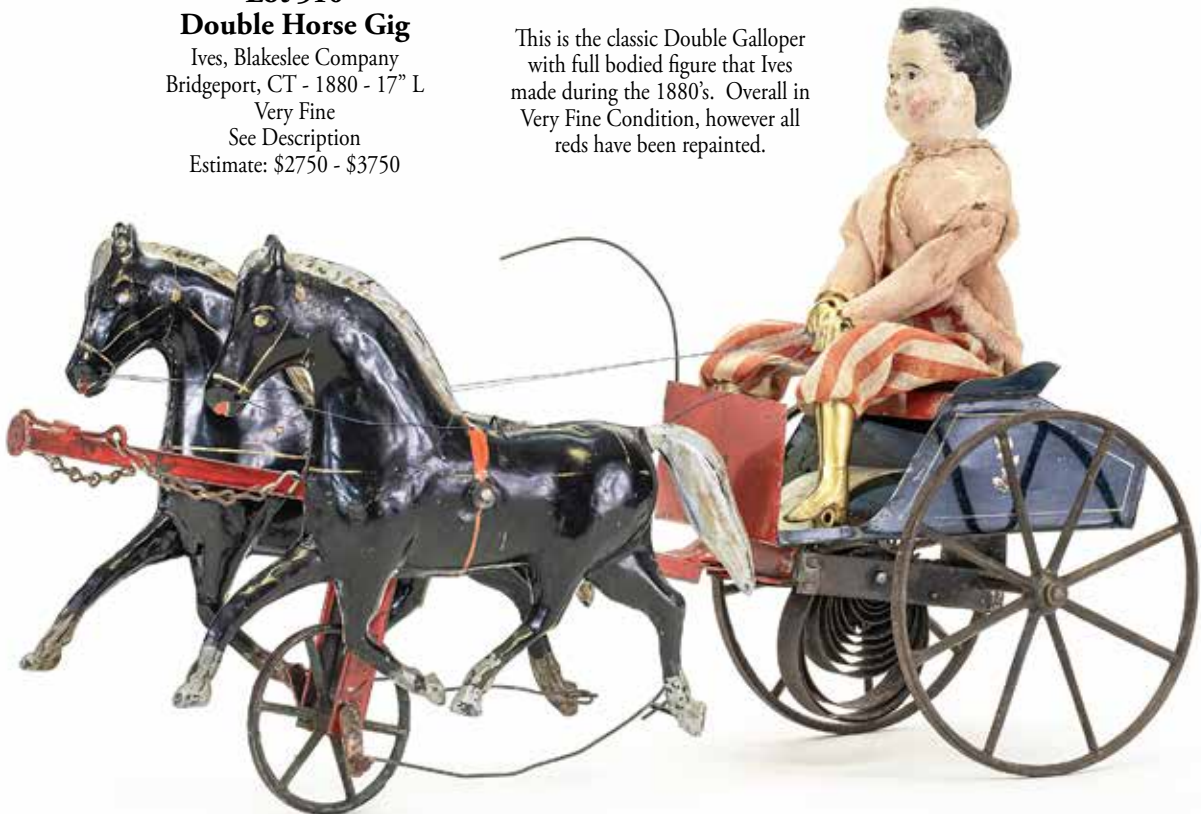
The Hook Behind is considered one of the Holy Grails by American tin and clockwork toy collectors. The toy was an astounding \$5.00 in the day (the average worker made \$2.00 per week at that time). There are probably about 15 - 20 known examples; of which this is one of the finest. A great toy addition awaits you.



Lot 510
Double Horse Gig

Ives, Blakeslee Company
Bridgeport, CT - 1880 - 17" L
Very Fine
See Description
Estimate: \$2750 - \$3750

This is the classic Double Galloper with full bodied figure that Ives made during the 1880's. Overall in Very Fine Condition, however all reds have been repainted.





Lot 511

Turkey Squeak Toy

Erzgebirge, Germany - 1880 - 6.75" T

Excellent Plus

Minor Abrasions

Estimate: \$750 - \$950

This colorful Turkey still squeaks faintly and is in Excellent Plus, bright condition.



Lot 512

Santa Claus Roly Poly

Schoenhut Toys

Philadelphia, PA - 1915 - 8.25" T

Excellent Plus

See Description

Estimate: \$800 - \$1000

A classic and bright Santa Roly Poly. Very minor inpaint to his white waistband.



Lot 513

Dove Squeak Toy

Erzgebirge, Germany - 1880 - 6" T

Pristine

Estimate: \$600 - \$800

This is a superior and bright squeak toy that still squeaks.



Lot 514

Indian Nine Pins

Germany - 1900 - 8.75" to 9.25" T

Pristine and Bright

Estimate: \$2500 - \$3500

Included are the Chief, four Warriors with Tomahawks and Shields and four Warriors with Tomahawks and Knives.



Lot 515
Turtle Footstool
 St. Johnsbury, VT - 1920 - 18" L
 Excellent Plus
 Missing its Button Eyes
 Estimate: \$500 - \$700

This is a charming, cottage industry footstool in the shape of a Turtle. The painted patina is sublime. It was made by the first makers of such stools.



Lot 516
Penguin Carving
 American - 1910's - 17" T
 Excellent Plus
 Estimate: \$2000 - \$3000

This is one of the cutest folk art carvings that we have ever seen. Carved and assembled from three pieces of wood, with glass eyes and cast iron feet and base, A Folk Art Masterpiece.



Lot 517
Folk Art Touring Car
 American - 1920 - 24" L x 14.5" T
 Pristine
 See Description
 Estimate: \$2000 - \$3000

This carved car depicts a Father, Mother, Son and the family dog out for a drive in the country. The details of this Folk Art Gem are amazing. Pristine Patina, but missing the right side front wheel cover.



Lot 518
"Independence" Hand Tub

American - 1890's - 21" L

Very Fine

Estimate: \$1000 - \$1500

This hand tub was donated to the Smithsonian Institution during the mid 1930's. It is a model of hand tubs utilized by Fire Companies such as the "Independence" from about 1770 - 1820.

Lot 519
Dining Car Model

American - 1895 - 24" L

Very Fine

Estimate: \$1000 - \$1500

Possibly a patent model or miniature salesman sample that could easily be carried to show prospective clients what was coming soon. Made of wood, glass, fabric and sheet brass.



Lot 520
Hand-in-Hand Fire Company

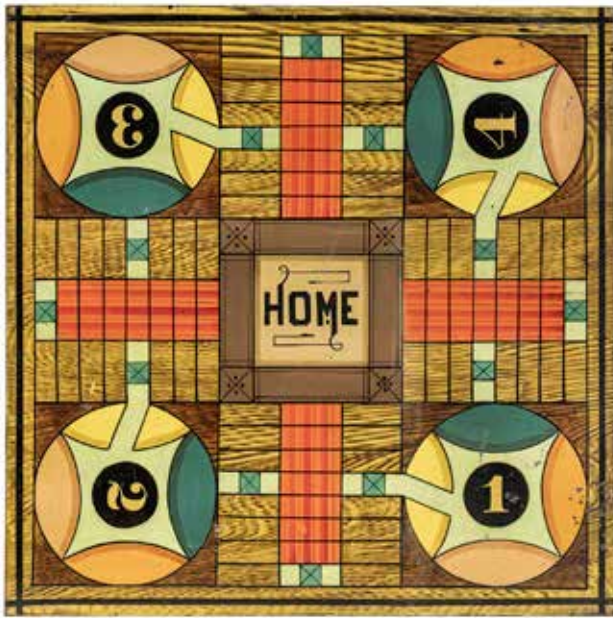
Bird-in-Hand, PA - 1910 - 17" L

Very Fine

Estimate: \$800 - \$1000

Another piece that was donated by a Philadelphia Insurance Company to the Smithsonian in the 1930's. The Hand-in-Hand Company was founded in 1910 and this piece resided there until purchased and given to the Smithsonian.





Lot 521
Double-Sided Game Board

American - 1890 - 18" Square

Pristine Plus

Estimate: \$2250 - \$2750

This colorful double-sided game board is made of sheet-iron, which is a very rare material to use. Parcheesi on one side and chess/checkers on the other side.



Lot 523
Gamecock Weathervane

Jewell & Co.

Massachusetts - 1880's - 21.5" T x 14" L

Very Fine

Estimate: \$1750 - \$2250

This is a midsize version of a Gamecock Weathervane. It has a wonderful, original and crusty patina.



Lot 522
Good Will Soap Sled

Made by Paris Mfg. Co.

South Paris, ME - 1905 - 36" T

Pristine Plus

Estimate: \$2500 - \$3500

This sled, with advertising for Good Will Soap, has an impressive image of Santa; his pack laden with toys. It was probably only ever used as a trade stimulator and not a sled, as evidenced by its Pristine and Bright Condition.



Lot 524
Young Girl with Basket

Signed Agapito Labios
Mexico - 1930/40's
27" T x 22.5" W in Frame
Excellent
Estimate: \$400 - \$600

Agapito Labios was a Mexican Folk Artist who was born in 1898 and died in 1996. Most of his work was done in the period 1925 - 1960. His treatment of her lacework is truly outstanding. Very minor inpaint to the brown background.

Lot 525
Elaborate Clockwork Birdcage

Made by Bontems
French - 1905 - 20" T x 11" D
Excellent Plus
Estimate: \$2000 - \$3000

This Birdcage is in exceptional, bright and good working condition. The birds turn their heads from side to side and sing with a melodic voice when operated. Their voices are really strong.





Lot 526
Pair of Exercise Clubs

American - 1895 - 16.25" T
Excellent

Estimate: \$400 - \$600

Both finished with wonderful
back, red, brown and gold
painted surface.



Lot 527
Souvenir Miniature Paddles

Marked "Middleboro"
Massachusetts - 1890's - 22" L
Excellent Plus
Estimate: \$350 - \$450

Presently spelled Middleborough, this resort town has
many ponds and one large lake bordering it. Famous as
the home of the Alden Shoe Company.



Lot 528
Three Gunpowder Tins

Two Dupont - One American Powder Mills
Delaware & Massachusetts
1890's / 1910's - 6.25" T
Excellent Plus or Better
Estimate: \$400 - \$600

All three in excellent and bright condition.
All retain their twist cap.



Lot 529
Patriotic Checkerboard

New Hampshire - 1880 - 23" W x 16" T
Excellent
Estimate: \$900 - \$1200

This checkerboard is well constructed with a raised border in red, going to a
darkened blue background and a blue and white board finished in red trim.



Lot 530
Young Boy Holding a Flower

Bethlehem, PA - 1840
17.5" W x 19.5" T in Frame
Excellent Plus
Estimate: \$1500 - \$2000

This child, the son of a Druggist from Bethlehem, Pennsylvania is
in Excellent, Original Condition. The cartouche in the upper left
appears to include part of South Mountain, now part of the Lehigh
University Campus.



Lot 531
Young Man in Sulky

German - 1915 - 7.25" L
Very Good
See Description
Estimate: \$250 - \$350

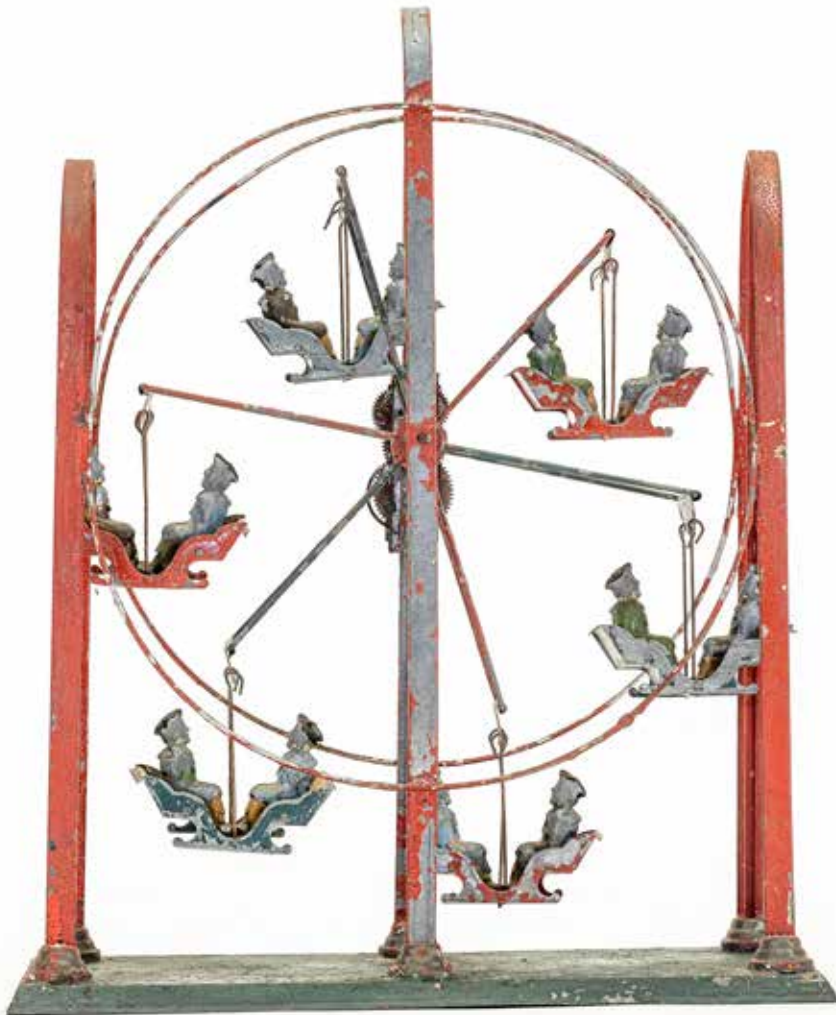
Overall in Very Good Condition and it works well. His arms go up and down as he is attempting to get more speed from the horse. Paint burned on left side of seat where he was reattached.



Lot 532
Gauge I Snow Plow

Gebruder Marklin
German - 1910 - 7.75" L
Excellent
Figures Replaced
Estimate: \$1000 - \$1500

Overall in Excellent Condition; the figures are replacements.



Lot 533
Ferris Wheel

German - 1920 - 15" T x 12" W
Very Good
See Description
Estimate: \$800 - \$1000

Overall in Very Good, working condition. Some old repaint to the red struts and the green base paint is alligatored.

Lot 534
Pontiac Two Tone Friction Sedan

Japanese - 1950's - 13" L

Near Pristine

Estimate: \$400 - \$600

This auto is both colorful and working very well.



Lot 535
Windup Anti-Aircraft Gun

Mounted to Truck

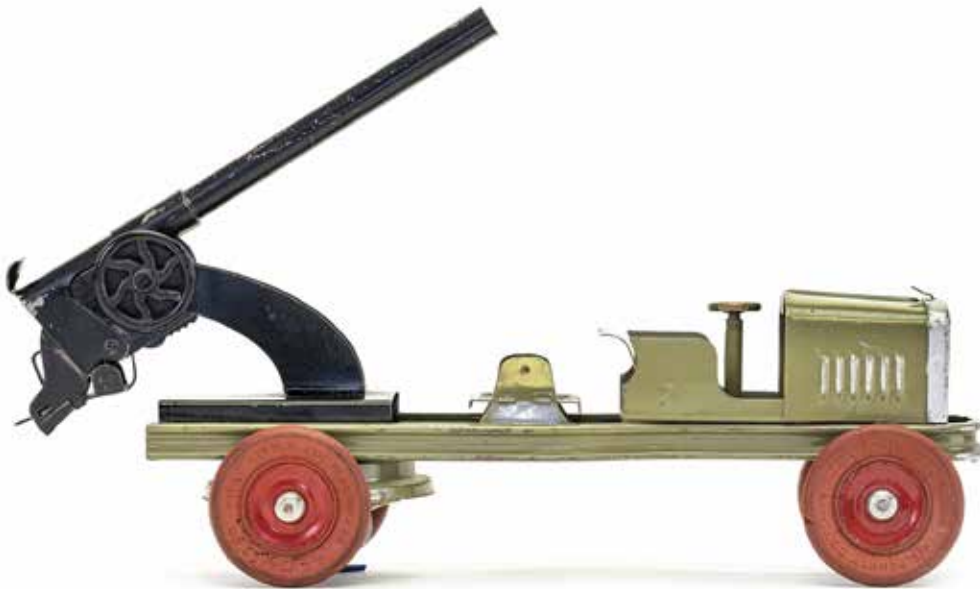
Kingsbury Mfg. Co.

Keene, NH - 1930 - 12" L

Pristine Plus

Estimate: \$500 - \$700

We have never seen this Artillery Army vehicle before. It works really well. This cannon is functioning, however, no Artillery Shells are present.



Lot 536
Pontiac Two-Tone Friction Sedan

Japanese - 1950's - 13" L

Pristine

Estimate: \$450 - \$650

Another extremely colorful, superior condition, good working Japanese friction automobile.





Lot 537
Submarine

Gebruder Marklin
German - 1920 - 17" L
Excellent
Estimate: \$1000 - \$1500

Made in the period just after WWI by Marklin. It is in excellent, good working condition with original flags.

Lot 538
Saloon Car

Tipp & Co.
German - 1930 - 20.5" L
Excellent Plus
Two Tiny Bonnet Dents
Estimate: \$1000 - \$1500



This is a superior, bright and good working example of this wonderful Art Deco Era automobile.



Lot 539
Dump Truck - Large

Tipp & Co.
German - 1920's - 22.5" L
Fine
See Description
Estimate: \$700 - \$900

This is an impressively scaled and colorful dump truck with a lift mechanism and opening gate. It works well. Surface rust mostly on bonnet and the truck bed.



**Lot 540
Limousine**

Tipp & Co.
German - 1920's - 12.75" L
Fine
See Description
Estimate: \$375 - \$500

A classic Tipp auto. Both doors have been replaced and some repaint to the body (mostly the bonnet).

**Lot 541
Limousine**

Gebruder Bing
Nuremberg, Germany - 1920's - 15.5" L
Very Fine
Estimate: \$800 - \$1000

This is a nice example of Bing's classic, large-scaled and windup Limousine. It works well.



**Lot 542
Two Seat Coupe**

Gunthermann
German - 1930 - 14" L
Very Fine
Estimate: \$550 - \$750

This colorful, lithographed auto is in Very Fine and good working condition.



**Lot 543
Open Saloon Car
with Windscreen**

J. Distler Company
German - 1920's - 12.5" L
Very Fine
Estimate: \$700 - \$900

This is a wonderful toy auto that is Chauffeur driven, has a luggage rack and with rubber tires. It works well.





Lot 544
"NANDO" Robot

Italy - 1955 - 4.75" Tall
Very Fine
Original Box and Instructions
Estimate: \$600 - \$900

Presently not working, missing the rubber bulb that would attach to the tube.



Lot 545
Two Japanese Windup Robots

Japan - 1950's - 6.5" - 7.5" T
Fine to Very Fine
See Description
Estimate: \$125 - \$175

Space Man Robot (Grey) made by S.Y (Yone) of Japan and works. Sparky Robot (Brown) made by K O (Yoshia) of Japan does not work and is missing his headset/part of antenna.



Lot 546
Atomic Robot Man

Japan - 1950's - 5" Tall
Excellent
Works Well
Estimate: \$300 - \$400

Marked "Japan" on back.



Lot 547
Roby Robot Sparking

Japan - 1950's - 7.5" Tall
Fine
See Description
Estimate: \$300 - \$400

Made by Yonezawa. Marked "Made in Japan" and has the Yonezawa logo. Walks but does not spark. Some surface rust and small bits of new solder.



Lot 548
Two Sparky Robot Toys

Japan - 1950's - 7.75" Tall
Fine to Excellent
Both Work Well
Estimate: \$200 - \$300

Both made by K O (Yoshia). Plain one marked "JAPAN" underneath, more detailed one marked "K O". Detailed robot missing tabs to hold down his headphones.



Lot 549
Space Robot Trooper

Japan - 1950's - 6 1/2" Tall
Pristine
See Description
Estimate: \$300 - \$500

Made by K O (Yoshia) of Japan. The light turns on, however he does not move. No cracks in the plastic.



**Lot 550
Robot ST1**

Germany - 1950's - 7" Tall
Excellent
Works Sporadically
Estimate: \$175 - \$225

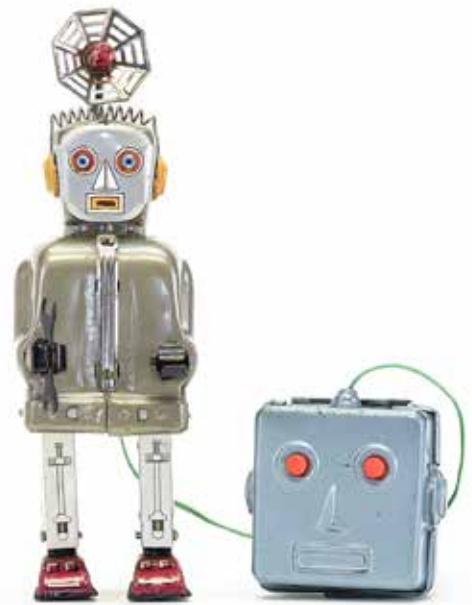
Made by Strenco of Germany.



**Lot 551
Zoomer the Robot**

Japan - 1950's -
Fine
Works Well
Estimate: \$275 - \$375

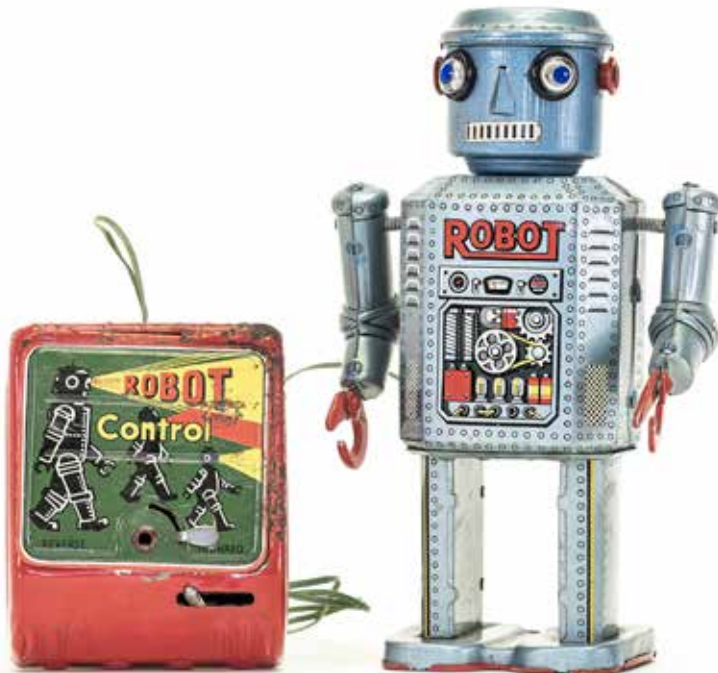
Made by T.N (Nomura) of Japan. Copyright by
George G. Wagner. Some surface rust to back.
This is the windup version.



**Lot 552
Radar Robot**

Japan - 1950's - 9.5" Tall
Excellent
See Description
Estimate: \$400 - \$600

Made by T.N (Nomura) of Japan. Marked
"Japan". Radar light and one eye light working.
Does not move.



**Lot 553
R-35 Robot**

Japan - 1950's - 7.5" Tall
Fine
See Description
Estimate: \$125 - \$175

Made by Line Mar of Japan. Only one eye lights up, no movement.
Surface rust to remote control and inside battery compartment.



**Lot 554
Remote Door Robot**

Japan - 1950's - 9.25" Tall
Excellent
See Description
Estimate: \$400 - \$600

Made by Alps of Japan. Not presently working. Rubber hands and plastic
dome with no cracks.



Lot 555
Space Commando

Japan - 1950's - 7.25" Tall
Very Fine
Works Well
Estimate: \$100 - \$150

Made by T.N (Nomura) of Japan. Missing his plastic helmet.



Lot 556
Space Man

Japan - 1950's - 9" Tall
Excellent
Works Well
Estimate: \$400 - \$600

Made by T.N (Nomura) of Japan. Replaced remote control.



Lot 557
Rosko Astronaut

Japan - 1960's - 13.5" Tall
Very Fine
Not Presently Working
Estimate: \$400 - \$600

Made by T.N (Nomura) of Japan. Some rusting to battery compartments.



Lot 558
Earth Man

Japan - 1950's - 9" Tall
Very Fine
Not Presently Working
Estimate: \$300 - \$500

Made by T.N (Nomura) of Japan. Has scratching and oxidation.



Lot 559
Super Astronaut

Japan - 1960's - 11.25" Tall
Very Fine Plus
Not Presently Working
Estimate: \$75 - \$125

Made by Horikawa. Marked "Made in Japan".



Lot 560
Space Explorer

Japan - 1960's - 12" Tall
Very Fine
See Description
Estimate: \$400 - \$600

Made by Yonezawa. Moves forwards and around, robot's eyes blink, but does not transform into a television.



Lot 561
Fighting Spaceman

Japan - 1960's - 11.5" Tall
Excellent
Not Presently Working
Estimate: \$125 - \$175

Made by Horikawa. Marked "Made in Japan".



Lot 562
Gear Robot

Japan - 1960's - 11.5" Tall
Excellent
See Description
Estimate: \$125 - \$175

Made by Horikawa. Marked "Made in Japan". Gears spin, top light goes on, moves and moves forward. Only one of two chest lights work.



Lot 563
Attacking Martian

Japan - 1960's - 11" Tall
Very Fine
Not Presently Working
Estimate: \$125 - \$175

Made by Horikawa. Oxidation to chrome.



Lot 564
Smoking Robot

Japan - 1950's - 11.75" Tall
Very Fine
See Description
Estimate: \$300 - \$500

Made by Yonezawa. Marked "Made in Japan" and has the Yonezawa logo. Top light turns on, but does not move. One light bulb "eyeball" slightly loose.



Lot 565
Mechanized "Robby" Robot

Japan - 1950's - 13" Tall
Very Fine
See Description
Estimate: \$300 - \$500

Made by Yonezawa. Marked "Made in Japan". Light turns on, but no action.
Some paint peeling to back of feet.



Lot 566
Directional Robot

Japan - 1950's - 11.5" Tall
Excellent
Works Well
Estimate: \$500 - \$700

Made by Yonezawa. Marked "Made in Japan".



Lot 567
Cragstan Mr. Robot

Japan - 1950's - 12" Tall
Very Fine with Original Box
Works Well
Estimate: \$600 - \$800

Made by Yonezawa. Marked "Made in Japan" and has the Yonezawa Logo. Box lid with some tears. Battery casing with rust, battery door with two small holes.



Lot 568
Piston Action Robot

Japan - 1950's - 9" Tall
Very Fine with Original Box
Not Presently Working
Estimate: \$400 - \$600

Made by Nomura. Marked "JAPAN". Box marked "T.N". Helmet with 1" crack starting at screw hole.



Lot 569
Three Rocket Toys

Made in Germany/Japan - 1950's/1960's
Very Fine to Excellent
All Work Well
Estimate: \$200 - \$300

Made by Technofix, Modern Toys. 2.25" to 9.75" Long. All friction action.



Lot 570
Flash Gordon Rocket Fighter

Made by Marx
New York City - 1960's - 12" L
Very Fine
Works Well
Estimate: \$300 - \$400
Replaced Tail Fin.



Lot 571
Two Space Patrol Cars

Japan - 1950's/1960's
Fine / Excellent
See Description
Estimate: \$800 - \$1200

Made by Nomura (T.N) / Asah (ATC). ATC Space Patrol comes with original box lid. 7.75" to 8" Long. Friction "Space Patrol" (ATC) works. Battery operated car (T.N) does not.



Lot 572
Two Space Vehicle Toys

Japan - 1950's
Very Fine to Excellent
Both Work Well
Estimate: \$800 - \$1200

Made by Yoshia (KO). Both marked KO. Cragstan astronaut riding a rocket is rare.



Lot 573
Atomic Rocket

Japan - 1950's - 9" Long
Very Fine
Missing Antenna
Estimate: \$75 - \$125

Made by Modern Toys. Marked "TM"
and "Made in Japan".

Lot 574
Sky-Rocket with Box

Gunthermann
Germany - 1950 - 7" L
Excellent with Original Box
Estimate: \$250 - \$350
Made by Gunthermann. U. S. Zone
Germany.



Lot 575
Sonicon Rocket

Japan - 1950's - 14" Long
Very Fine
Missing Antenna
Estimate: \$175 - \$225

Made by Masudaya. Lights turn on,
but no action.

Lot 576
Sonar Space Patrol

Japan - 1950's - 13" Long
Very Fine
Works Well
Estimate: \$300 - \$400

Made by Yonezawa. Marked "Made in
Japan" and has the Yonezawa Logo. Some
light scratching, minor oxidation to chrome.
Dome intact. No whistle.





Lot 577
Moon Track with Rocket

Germany - 1950's - 19" Long
Excellent with Original Box
Works Well
Estimate: \$300 - \$500

Made by Technofix. Box with some tears and puncture holes. Retains two original cars and the key.

Lot 578
Robot Torpedo with Box Top

Japan - 1950's - 11.5" Long
Excellent Plus with Original Box Top
Works Well
Estimate: \$500 - \$700

Made by Marusan (SAN). Original box top with some corner splits.



Lot 579
Rocket Launching Pad

Japan - 1950's - 8.5" Tall
Excellent with Original Box Top
Not Presently Working
Estimate: \$400 - \$600

Made by Yonezawa. Marked "Made in Japan" with Yonezawa logo. Retains original "UF" Rocket. Box top with tears.



Lot 580
Two Stage Rocket Launching Pad

Japan - 1950's - 7" W x 7.25" T
Fine
Works Well
Estimate: \$250 - \$350

Made by Nomura (T.N). Retains two original rubber tips for the rockets.



Lot 581

Cragstan Astronaut

Japan - 1950's - 14" Tall
Excellent Plus with Original Box
Works Well
Estimate: \$1200 - \$1800

Made by Daiya. Walks, raises gun, lights up and simulates gun noise. Box with some tears. 1" crack in left side of dome.



Lot 582

Mechanized "Robby" Robot with Box

Japan - 1950's - 13" Tall
Pristine with Original Box
Not Presently Working
Estimate: \$800 - \$1200

Made by Yonezawa. Marked "Made in Japan". Box marked Showa.

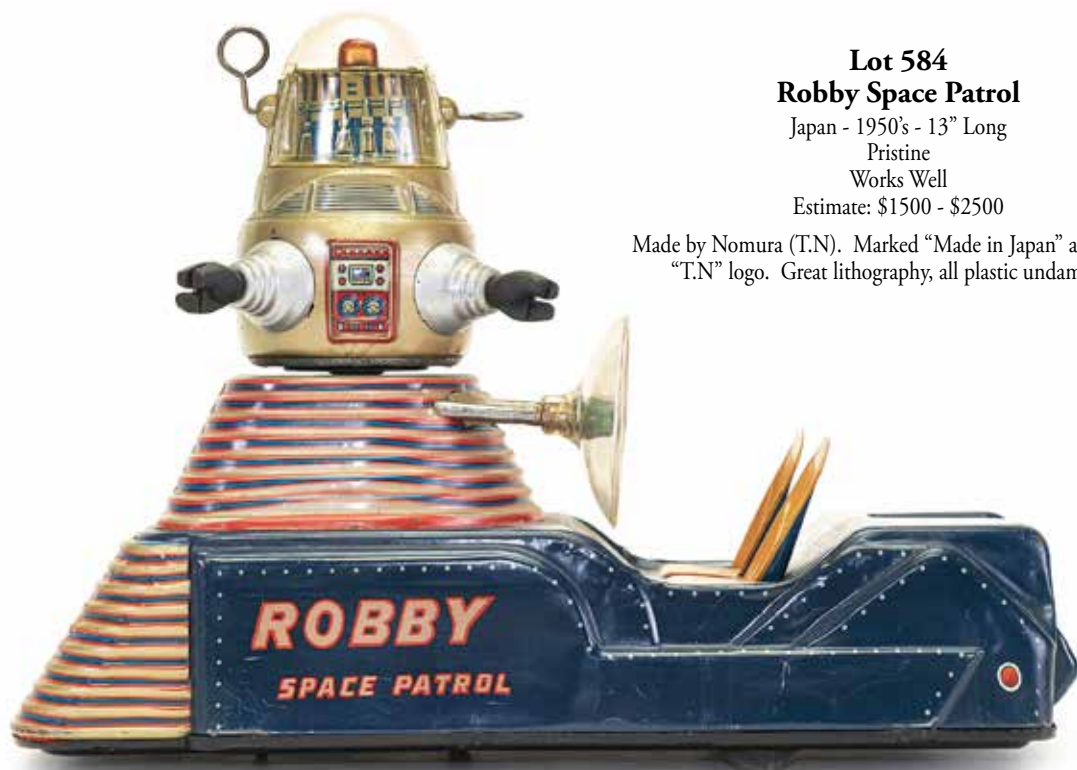


Lot 583

Sonic Robot

Japan - 1950's - 15.25" Tall
Excellent Plus
Works Well
Estimate: \$1500 - \$2500

Made by Modern Toys. Marked "TM" and "Made in Japan". This is a very rare robot, also known as "Train Robot". Very slight rust to battery housing.



Lot 584
Robby Space Patrol

Japan - 1950's - 13" Long

Pristine

Works Well

Estimate: \$1500 - \$2500

Made by Nomura (T.N). Marked "Made in Japan" and has the "T.N" logo. Great lithography, all plastic undamaged.

Lot 585
Moon Patrol with Original Box

Japan - 1950's - 13" Long

Pristine with Original Box

Works Well

Estimate: \$1600 - \$2000

Made by Nomura (T.N). Marked "Made in Japan" and has the "T.N" logo. Great condition, all plastic undamaged. Box with some tears, tape repairs.





Lot 586
X - 5 Space Tank

Japan - 1950's - 9.25" Long
Excellent
Not Presently Working
Estimate: \$700 - \$900

Made by Sankei (K). Marked "Japan" and has the "((K))" logo.
Missing one tread. Very Rare.



Lot 587
Space Patrol X - II

Japan - 1950's - 8.25" Long
Excellent with Original Box Lid
Not Presently Working
Estimate: \$300 - \$500

Made by Yonezawa. Great lithography, plastic undamaged.



Lot 588
LINEMAR Superman Tank

Japan - 1958 - 10.5" Long
Pristine
Works Well
Estimate: \$900 - \$1200

Made by LINEMAR. Great classic image of Superman overturning a tank.



Lot 589
Weather Car

Japan - 1950's - 9" Long
Excellent
Not Presently Working
Estimate: \$600 - \$800

Made by Sankei (K). Marked "Japan" and has the "((K))" logo.
Original figure loose at torso.



Lot 590
Space Tank - 28905

Japan - 1950's - 8.5" Long
Fine
Not Presently Working
Estimate: \$75 - \$125

Made by Modern Toys. Scratching throughout.
Dome cloudy with some scuffing.



Lot 591
Space Survey X - 09

Japan - 1950's - 9" Long
Very Fine
Not Presently Working
Estimate: \$125 - \$175

Made by Modern Toys. Light scratching to dome. Some rust / discoloration near on/off switch.



Lot 592
Flying Saucer X - 7

Japan - 1950's - 8.25" Diameter
Very Fine with Original Box
Not Presently Working
Estimate: \$250 - \$350

Made by Modern Toys. Light scratching to dome. Box with some dents and tears.



Lot 593
NASA Space Station

Japan - 1950's - 11" Diameter
Very Fine
Not Presently Working
Estimate: \$250 - \$350

Made by Horikawa (S.H). Some denting, missing antenna. Plastic domes are complete.



Lot 594
Jolly N. Scarce Blue Paint

Shepard Hardware
Buffalo, NY - 1880's
Very Fine
Missing one Screw
Estimate: \$400 - \$600



Lot 595
Dinah - Short Sleeve

John Harper Ltd.
Willenhall, England - 1920's
Pristine
Estimate: \$600 - \$800



Lot 596
Jolly N. - Circular Twist Trap

J. & E. Stevens Company
Cromwell, CT - 1880's
Excellent Plus
Estimate: \$1000 - \$1500



Lot 597
Little Joe with High Hat

Sydenham & McOustra
English - 1940's
Pristine
Estimate: \$350 - \$450

This is a scarce post war example with dagger eyes and a high hat.



Lot 598
Uncle Tom with
Lapels & Star

Kyser & Rex Company
Philadelphia, PA - 1880's
Very Fine
Trap Replaced
Estimate: \$375 - \$500



Lot 599
Jolly N. with High Hat

Chamberlain & Hill
English - 1910's
Fine
Estimate: \$400 - \$600



Lot 600
Aluminum Jolly N.
 English - 1920's
 Pristine Plus
 Estimate: \$375 - \$500



Lot 601
Uncle Tom with
Lapels & No Star
 Kyser & Rex Company
 Philadelphia, PA - 1880's
 Excellent Plus
 Estimate: \$900 - \$1200
 This is a superior and bright example.



Lot 602
Jolly N. - Solid Eyes
Unusual Arm
 Probably German - 1920's - 6" T
 Pristine
 Estimate: \$1200 - \$1500
 This bank is so rare that we have never seen it before
 and to our knowledge it is in no mechanical bank
 books. Possibly unique and a great collection addition.



Lot 603
Aluminum Jolly N. - Wide Mouth
with Lettering & Shepard Patent
 Austrian - 1920's
 Near Mint
 Estimate: \$500 - \$700

We have not seen an Austrian JN with the Shepard
 Patent and lettering before. Near Mint Condition, but
 missing its baseplate.



Lot 604
Austrian JN on
Rectangular Base
 Austrian - 1920's
 Pristine
 Estimate: \$500 - \$700



Lot 605
Jolly N. - Narrow Mouth
 Austrian - 1920's
 Excellent Plus
 Estimate: \$400 - \$600
 A very scarce example with a narrow mouth and better
 highlighted teeth.



Lot 606
'Spise Mule - Jockey

J. & E. Stevens Company
Cromwell, CT - 1890's
Very Fine
Not Locking in Place
Estimate: \$500 - \$700

Lot 607
Darktown Battery

J. & E. Stevens Company
Cromwell, CT - 1888
Fine
Estimate: \$900 - \$1200



Lot 608
'Spise Mule - Bench

J. & E. Stevens Company
Cromwell, CT - 1897
Very Fine
Estimate: \$600 - \$800



Lot 609
Monkey Bank
 Scarce Dark Green
 Hubley Mfg. Company
 Lancaster, PA - 1930's
 Pristine
 Estimate: \$800 - \$1000



Lot 610
Trick Dog
Solid Base
 Hubley Mfg. Company
 Lancaster, PA - 1925
 Near Mint
 Original Hubley Decal
 Estimate: \$900 - \$1200



Lot 611
Trick Dog
Six Part Base
 Shepard Hardware Company
 Buffalo, NY - 1890
 Excellent Plus
 Estimate: \$1500 - \$2000



Lot 612
Trick Dog Trade Card
A Wholesalers Card
 Shepard Hardware Company
 Buffalo, NY - 1890
 Pristine
 Estimate: \$3500 - \$4500

The Trick Dog Toy Savings Bank Trade Card is perhaps the hardest trade card to find. This example is in Pristine and Bright Condition with no toning or tears.



**Lot 613
Lion Hunter**

J. & E. Stevens Company
Cromwell, CT - 1911
Fine

Estimate: \$2000 - \$3000

President Theodore Roosevelt had popularized the African safari experience during his presidency. Here, Teddy encounters the King of the Beasts on a rocky outcropping. To operate the bank, cock the rifle and place a coin flat on the barrel. When the lever is pressed, the lion rears up and the coin is shot at him, but deflects off the rocks into the bank.



**Lot 614
Cat & Mouse**

J. & E. Stevens Company
Cromwell, CT - 1890's
Very Fine Paint
Repaired Original Baseplate
Estimate: \$1250 - \$1750

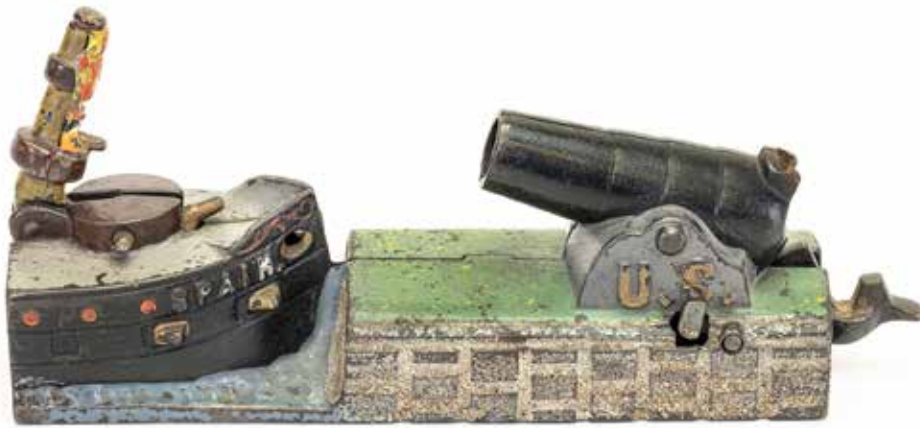


**Lot 615
Mammy Bank
Mauve Dress**

Kyser & Rex Company
Philadelphia, PA - 1880's
Fine

Replaced Trap & Spoon
Estimate: \$1500 - \$2000

The Mammy & Child Bank illustrated a sensitive moment between a mother and her infant baby. When properly placed on the spoon, pennies can be deposited through the baby's mouth if you push the lever down carefully.



Lot 616
U. S. & Spain

J. & E. Stevens Company
Cromwell, CT - 1898

Very Fine

Estimate: \$2250 - \$3000

The imagery for this toy bank clearly derives from the military engagement between the United States and Spain in the Spring months of 1898.

Lot 617
Two Frogs

J. & E. Stevens Company
Cromwell, CT - 1880's

Very Fine

Estimate: \$950 - \$1250



Lot 618
Tank & Cannon

Starkies Company
Burnley, England - 1920's

Very Fine

Estimate: \$750 - \$950

The Tank & Cannon bank was brought to market at the end of World War 1. The British, delighted with their victorious outcome against the Germans, enjoyed a sense of rediscovered nationalism that even trickled into the world of toy design.



Lot 619
World's Fair

J. & E. Stevens Company
Cromwell, CT - 1893

Excellent Plus

Estimate: \$900 - \$1200

This bank was produced for sale as a souvenir at the Columbian Exposition staged in Chicago in 1893.





Lot 620
Boy Robbing Bird's Nest

J. & E. Stevens Company
Cromwell, CT - 1890's
Very Fine
Estimate: \$2500 - \$3500

Eager to take a peek in the nest, he shimmies up the vines and begins to edge his way onto the tree limb. When suddenly the branch snaps, toppling both him and the nest to the ground.



Lot 621
Leapfrog

Shepard Hardware
Buffalo, NY - 1890's
Fine

Estimate: \$1000 - \$1500

To operate the bank, set the standing figure behind the boy who is bent over. Place a penny in the slot at the top of the tree stump. Pressing the activation button found on the back of the bank causes the boy to leapfrog over his friend's back.



Lot 622
Bulldog - Red Blanket

J. & E. Stevens Company
Cromwell, CT - 1880's
Excellent Plus
Estimate: \$1250 - \$1750



Lot 623
Speaking Dog

Shepard Hardware
Buffalo, NY - 1890's
Excellent Plus & Bright
Estimate: \$900 - \$1200

In an effort to have a companion with whom she can converse, we find a young girl giving her pet dog some instruction on how to bark (speak).



**Lot 624
Harold Lloyd**

Saalheimer & Strauss
Nurnberg, Germany - 1920's
Excellent
Estimate: \$1750 - \$2250

An amusing toy bank depicting the renowned silent movie star wearing his iconic circular framed spectacles and his straw hat.

**Lot 625
African Native**

Saalheimer & Strauss
Nurnberg, Germany - 1920's
Pristine
Estimate: \$4000 - \$6000

The African Native is one of the rarest from the series of tin coin swallows by Saalheimer & Strauss. Very few are known to exist.



**Lot 626
Cat Spring Jaw**

German - 1920
Pristine
Estimate: \$4000 - \$6000

One of a series of about 10 spring-jawed banks made in Germany during the 1920's. This is a superior, all original, example. Drop a coin in, it strikes a lever causing the jaw to wobble.



**Lot 627
Burnett Postman**

Burnett Ltd.
London, England - 1930
Near Mint
Estimate: \$400 - \$600

This is a superior example. Gravity activated; a coin placed on his tray causes him to turn left, depositing it into the bank.



**Lot 628
Bonzo Spring Jaw**

German - 1920
Very Fine
See Description
Estimate: \$1500 - \$2000

Another in the series of spring-jaw banks, about 1/3 of his back has been repainted.



**Lot 629
Kick-Inn Bank**

Presto Mfg. Co.
St. Louis, MO - 1921
Near Mint
Estimate: \$400 - \$600

This appears to be a very early production example, with a plain roof and base. It is in far superior condition, retaining 98% of its paper label on the base.



**Lot 630
Cabin - Yellow**

J. & E. Stevens Company
Cromwell, CT - 1880's
Excellent Plus
Estimate: \$750 - \$950



**Lot 631
Zoo Bank**

Kyser & Rex Company
Philadelphia, PA - 1880's
Near Mint Plus
Missing its Coin Rest
Estimate: \$1750 - \$2250

Place your pennies in the slot found at the top of the dormer and press the monkey's face as the bank instructs. The green shutters suddenly open, causing a lion and a bear to appear in the windows.



**Lot 632
Cabin - Green**

J. & E. Stevens Company
Cromwell, CT - 1880's
Bill Norman Collection
Excellent Plus
Estimate: \$800 - \$1000



**Lot 633
Patriotic Hall's Excelsior**

J. & E. Stevens Company
Cromwell, CT - 1876
Donal Markey Collection
Near Mint
Estimate: \$1750 - \$2250



**Lot 634
Dog on Turntable - Ebony**

H. L. Judd Company
Wallingford, CT - 1885
Donal Markey Collection
Near Mint
Estimate: \$1750 - \$2250



**Lot 635
Hall's Excelsior - Apple Green**

J. & E. Stevens Company
Cromwell, CT - 1876
Excellent
Hand & Arms Replaced
Estimate: \$500 - \$700



Lot 636
Chief Big Moon

J. & E. Stevens Company
Cromwell, CT - 1899

Excellent Plus

Estimate: \$2000 - \$3000

Charles Bailey's inspiration for "Chief Big Moon" may have come from the frog pond adjacent to the Stevens' foundry building.



Lot 637
Tammany

J. & E. Stevens Company
Cromwell, CT - 1870's

Pristine

Estimate: \$1200 - \$1500

The most creative use of political satire ever deployed in the production of toy banks.

Lot 638
Eagle & Eaglets

J. & E. Stevens Company
Cromwell, CT - 1880's

Donal Markey Collection
Near Mint & Bright

Estimate: \$1750 - \$2250

Operating this bank is a true visual joy. Watch mama eagle drop coins into the nest of her chicks when you push the lever down.



Lot 639
Teddy and the Bear

J. & E. Stevens Company
Cromwell, CT - 1910

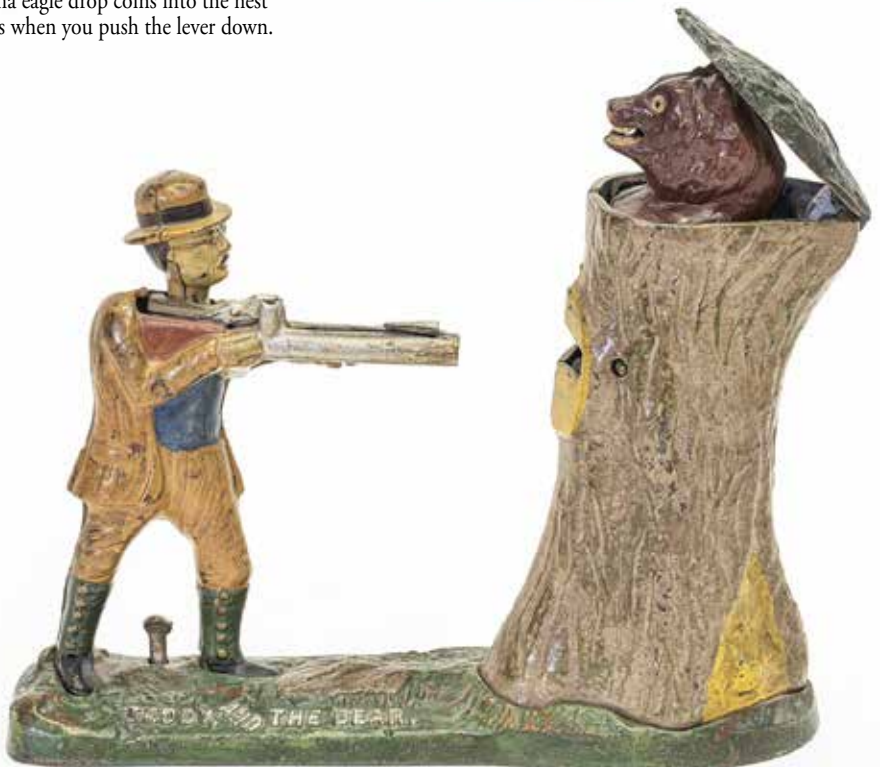
Bill Norman Collection

Pristine

Estimate: \$3500 - \$4500

Teddy Roosevelt was associated with bears and bear hunting from the earliest times in his presidency.

Before the bank is operated, the bear is hidden inside the hollowed out tree stump. However, when the lever is pulled, the foliage cover springs up and the head of a brown bear pops out from within.





Lot 640
Acrobats

J. & E. Stevens Company
Cromwell, CT - 1880's
Excellent Plus
Estimate: \$3750 - \$5000

To operate the bank, you must first snap the tumbler's feet in place on the ground. Push the button down and watch the acrobat swing up into a handstand. As he moves upward, he kicks the clown in the belly, flipping him upside down.



Lot 641
Organ Grinder & Performing Bear

Kyser & Rex Company
Philadelphia, PA - 1880's
Excellent Plus
Estimate: \$2500 - \$3500

Here we see two young boys peeking over a fence at a performer training his bear to dance to music. One of only two clockwork banks to have been produced.

Lot 642
Breadwinner

J. & E. Stevens Company
Cromwell, CT - 1886
Very Fine
See Description
Estimate: \$10,000 - \$15,000



This is a highly sought after mechanical bank. Produced at a time when labor unions are just starting to organize. Here we see the laborer on the right side of the bank, the union organizer in the middle and the robber baron owner on the left side. The bank is in Very Fine Overall Condition with repaint to one-half of the laborer's red shirt. Needs a minor adjustment to work well.



Lot 643
Cupola Bank

J. & E. Stevens Company
Cromwell, CT - 1870's
Very Fine
2" Crack in Red Roof
Estimate: \$3000 - \$4000

The Cupola Bank is arguably the prettiest building bank ever created. The flared foundation with its steep staircase, is a great visual anchor for its cylindrical structure. Ultimately, your eyes drift upwards where you discover two scalloped rooflines, a most pleasing aesthetic outcome. Pressing the door knob causes the cupola to rise on three poles, revealing the bank manager in his office beneath the dome.



Lot 644
Magic Bank - Green

J. & E. Stevens Company
Cromwell, CT - 1870's
Donal Markey Collection
Near Mint & Bright
Estimate: \$4000 - \$6000

The Magic Bank functions as both a still and mechanical bank. Coins can either be routinely dropped into the slot in the roof or they can be spun around in the teller's tray when you press the button.



Lot 645
Apple Bank

Kyser & Rex Company
Philadelphia, PA - 1890
Excellent Plus
Estimate: \$600 - \$800

Painted yellow with original copper highlights.



Lot 646
Billy Goat Bank

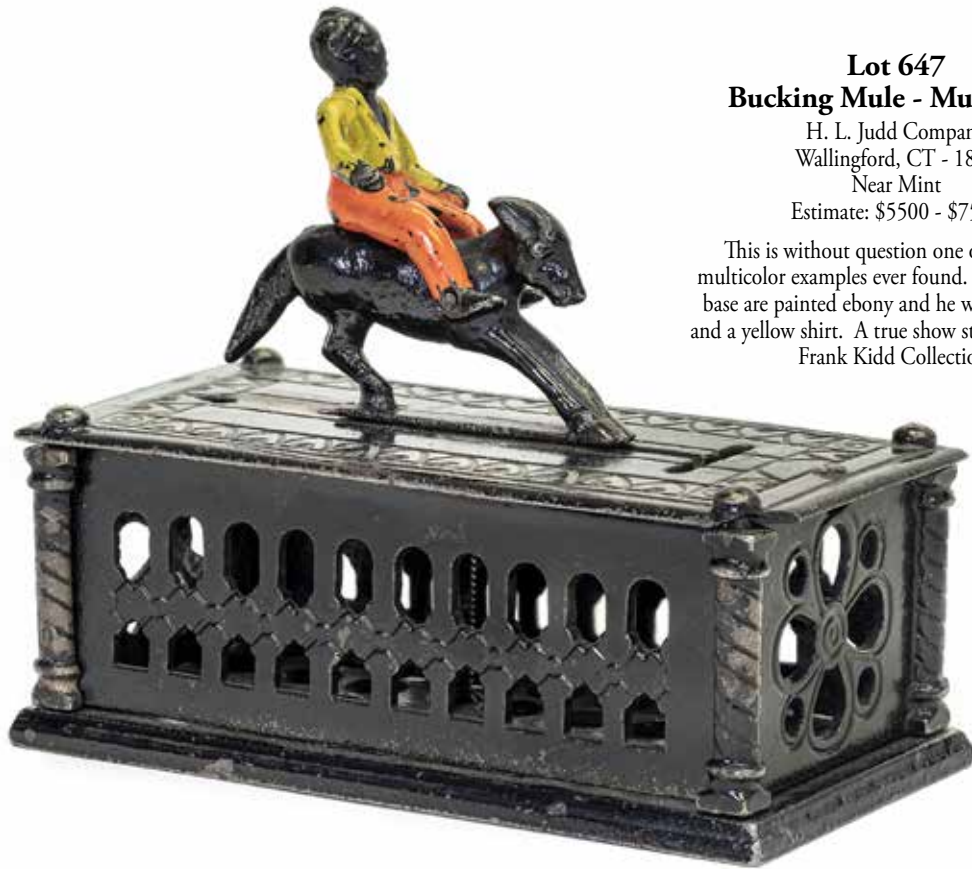
Second Casting
American - 1950's
Pristine
Estimate: \$1000 - \$1500

This is a very collectible second casting of the scarce and delicate "Billy Goat" bank.

Lot 647
Bucking Mule - Multicolor

H. L. Judd Company
 Wallingford, CT - 1885
 Near Mint
 Estimate: \$5500 - \$7500

This is without question one of the finest multicolor examples ever found. The mule and base are painted ebony and he wears red pants and a yellow shirt. A true show stopper from the Frank Kidd Collection.



Lot 648
Butting Ram, Man Thumbs Nose

Wagner & Zweibel Machine Shop
 Burlington, WI - 1890's
 Excellent Plus
 Estimate: \$5500 - \$7500

Place a coin on the edge of the slot in the tree stump. Watch as the man angers the ram by thumbing his nose at him. The ram suddenly charges forward, butting the penny into the stump. Collectors call this a "one off" bank because it is a unique piece made by a small shop rather than a big toy manufacturer. This example with the tree stump painted black, is in sublime and bright condition.



Lot 649
Motor Bank

Kyser & Rex Company
Philadelphia, PA - 1889

Excellent

See Description

Estimate: \$12,500 - \$17,500

The Motor Bank is very scarce and rarely found, as this one is, with its original coin trap. Overall in Excellent, good working condition. The original platform end closer to the coin slot has been repaired.



Lot 650
Milking Cow

J. & E. Stevens Company
Cromwell, CT - 1888

Pristine Paint

Cow's Leg Replaced

Estimate: \$4000 - \$6000

Place a coin in the cow's back and depress the lever. The cow kicks up her hind leg and tail, upsetting the boy who falls over.



Lot 651
Boy Robbing Bird's Nest

J. & E. Stevens Company
 Cromwell, CT - 1890's
 Frank Kidd Collection
 Near Mint & Bright
 Estimate: \$14,000 - \$18,000

An inquisitive boy has spotted a nest in a low lying branch of a tree. Eager to take a peek in the nest, he shimmies up the vines and begins to edge his way onto the tree limb. When suddenly, the branch snaps, toppling both him and the nest to the ground. The Boy Robbing Bird's Nest was to become one of Stevens' all time best sellers. It had a production run that lasted more than ten years. This is an extremely bright example with great highlighted accents.



Lot 652
Confectionary Bank

Kyser & Rex Company
 Philadelphia, PA - 1880's
 Pristine
 Estimate: \$17,500 - \$22,500

The candy store shopkeeper standing in front of her drawers makes an appealing composition; one that truly evokes the atmosphere of the Victorian Era. Certainly, it must have been a great excitement for a child to visit such a store to buy penny candies. The design called for a wide array of colors to achieve the bank's arresting effects. This represents one of the few banks that offers children a reward incentive that encourages them to save their money. Necco wafers can be loaded into the bank through the candy trap on the back side. To operate the bank, put your penny in the slot and push the lever inward. The shop lady will turn to fetch you a candy from her drawer. This is a far superior example that utilizes vivid colors to evoke the emotion of going to the candy store.

Lot 653
Mammy - Blue Dress

Kyser & Rex Company
 Philadelphia, PA - 1880's
 Pristine Paint
 See Description
 Estimate: \$7000 - \$9000

The Mammy and Child Bank is one of the most graphically appealing banks ever created. Kyser & Rex has presented us with a mother feeding her infant child. Ordinarily, based on this thematic content, one might wrongly conclude that the design for this project would be sensitive and subtle. But there is absolutely nothing subtle in this representation of mother and child. To the contrary, the visual conception is extremely frontal and powerful. Front half of original spoon is reattached and inpainted to match.



Lot 654
Stump Speaker

Shepard Hardware
 Buffalo, NY - 1880's
 Excellent Plus
 Estimate: \$2250 - \$2750

Shepard's imagery for the Stump Speaker Bank clearly alludes to the carpetbagger phenomenon that arose in the southern states in postbellum America. This breed of men descended from the north to take unfair advantages of those that had virtually lost everything. They were thoroughly contemptible and morally corrupt. Dressed in a costume that can only be described as obscenely colorful and absurdly over developed, this foppish dandy seems harmless enough, but don't be deceived by his comical appearance, he intends to fleece you of all your spare pennies.





Lot 655
Independence Hall Tower

Enterprise Mfg. Company
Philadelphia, PA - 1876
Donal Markey Collection
Near Mint Plus
Estimate: \$6500 - \$9500

Enterprise Manufacturing was selected as a local toy vendor at the Centennial Fair in Philadelphia. Their cast iron replica banks depicting various architectural aspects of Independence Hall were very popular with attendees to the fair. This is one of the best known examples of the bank and previously hailed from the Donal P. Markey Collection.

Lot 656
Uncle Sam

Shepard Hardware
Buffalo, NY - 1880's
Donal Markey Collection
Pristine Plus & Bright
Estimate: \$14,000 - \$18,000

In modern times, the Uncle Sam Bank is perhaps the most universally recognized toy bank ever created. It has been used as a moniker for savings by banking institutions as part of their advertising campaigns. Also, as a personification of both the American Federal Government and American patriotism, it has been reproduced countless times through the decades. Coins placed in his right hand are deposited into his satchel when the activating lever is pressed. As with other banks from Shepard's Excelsior Series, Uncle Sam has a novel weighted element that causes his lower jaw and white goatee to wobble, as if he is asking you to contribute to his coffers. This bank with thick, vibrant paint makes for a superior example. The bank was acquired years ago in Pennsylvania at a small country auction.





