

# The RSL Auction Company



RSL ONLINE AUCTION - Late Spring 2026

---

Saturday - May 23, 2026

## RSL ONLINE AUCTION - Late Spring 2026



### 1: Soldier/Minuteman Bank

USD 150 - 200

Hubley Mfg. Co. - Lancaster, PA. 1920 - 6"T x 2 1/2"W - The Peirce Collection

---



### 2: Buster Brown and Tiger Bank

USD 100 - 150

A.C. Williams Co. - Ravenna, OH. 1975 - 5"T x 3"W - The Peirce Collection

---



### 3: Two Panel Door Safe - Large

USD 60 - 90

American 1880's - 3 3/4"T x 3"W - The Peirce Collection

---



### 4: Save and Give Hanging Safe Bank - Very Scarce

USD 175 - 225

H.L. Judd Company - Wallingford, CT. 1880's - 5 1/2"T x 3 1/4" - The Peirce Collection

---



### 5: Pig - I Made Chicago Famous - Large Version

USD 80 - 120

J.M. Harper Co. - Chicago, IL. 1902 - 2 1/2"T x 5 1/4"L - The Peirce Collection

---



### 6: Nickel Plated Pig Bank - Large

USD 150 - 200

American 1920 - 3 1/2"T x 7 1/2"L - The Peirce Collection

---



### 7: The Chicken Thief Ceramic Bank

USD 100 - 150

Austrian 1910 - 4 1/4"T x 2 1/2"W - The Peirce Collection

---



### 8: Seated Dog with Pipe Ceramic Bank

USD 75 - 100

Austrian 1910 - 4 1/2"T x 3"W - The Peirce Collection

---

**RSL ONLINE AUCTION - Late Spring 2026**



**9: Two Ceramic Banks**

USD 80 - 120

Austrian 1910 - Larger is 2 1/2"T x 2 1/2"L - The Peirce Collection

---



**10: Two Ceramic Banks**

USD 80 - 120

Austrian 1910 - Taller is 3"T x 2 1/2"W - The Peirce Collection

---



**11: The Bisque Monk Bank**

USD 125 - 175

Austrian 1910 - 4 1/2"T x 2"W - The Peirce Collection

---



**12: Two Ceramic / Pottery Banks - One Bernard Block**

USD 150 - 200

European 1910 - Man is 3 1/2"T x 4"D - The Peirce Collection

---



**13: Queen Victoria Bust Bank**

USD 125 - 175

Made by Eddie Whitehead - English 2000's - 8"T x 5"W - The Peirce Collection

---



**14: Vote Republican Elephant Bank**

USD 125 - 175

Made of Composition - Japanese 1950's - 4"T x 6 3/4"W - The Peirce Collection

---



**15: Old Abe with Shield Cast Iron Bank - Scarce**

USD 275 - 375

American 1920 - 4"T x 2"W - The Peirce Collection

---



**16: Edison Upright Phonograph Bank**

USD 80 - 120

Made by Rehberger - Chicago, IL. 1930 - 4"T x 1 3/4"W - The Peirce Collection

---

**RSL ONLINE AUCTION - Late Spring 2026**



**17: Transvaal Money Box Bank**

USD 350 - 450

John Harper Ltd. - English 1895 - 6"T x 4"W - The Peirce Collection

---



**18: General Butler Cast Iron Still Bank - Very Scarce**

USD 700 - 900

J & E Stevens Co. - Cromwell, CT. 1890 - 6 1/2"T x 3 1/2"W - The Peirce Collection

---



**19: The Trust Bank - Rare**

USD 950 - 1,250

J & E Stevens Co. - Cromwell, CT. 1890 - 7 1/4"T x 4"W - The Peirce Collection

---



**20: Two Small Cast Iron Building Banks**

USD 100 - 150

American 1900 - 3"T x 2 1/2"W - The Peirce Collection

---



**21: Log Cabin Bank - Chimney Left**

USD 125 - 175

Kyser and Rex Co. - Philadelphia, Circa 1890 - 2 1/2"T x 3 1/2"W - The Peirce Collection

---



**22: One Car Garage - Multicolor Very Rare Factory Paint**

USD 250 - 350

A.C. Williams Co. - Ravenna, OH. 1920 - 2 1/2"T x 2 1/4"W - The Peirce Collection

---



**23: The Fort Bank**

USD 150 - 200

Kenton Hardware - Kenton, OH. 1915 - 4"T x 2 1/4"W - The Peirce Collection

---



**24: Statue of Liberty Bank - Middle Size Version**

USD 200 - 250

Kenton Hardware - Kenton, OH. 1915 - 6 1/4"T x 2 1/4"W - The Peirce Collection

---

## RSL ONLINE AUCTION - Late Spring 2026



### 25: Statue of Liberty Bank - Large Version

USD 300 - 400

Kenton Hardware - Kenton, OH. 1915 - 9 3/4"T x 3 1/2"W - The Peirce Collection

---



### 26: Radio Bank Three Dials - Small Version - Retains the Original Operating Tag

USD 150 - 200

Kenton Hardware - Kenton, OH. 1920's - 3"T x 4 1/2"W - The Peirce Collection

---



### 27: Majestic Radio in the Original Cardboard Box

USD 125 - 175

Grigsby-Grunow Co. - Chicago, IL. 1930's - 4 1/2"T x 3"W - The Peirce Collection

---



### 28: Preferred Life Assurance Society Bank

USD 80 - 120

By American Art Works - Coshocton, OH. 1930's - 3"T x 3 1/4"W - The Peirce Collection

---



### 29: New Hampshire Savings Bank

USD 125 - 175

By American Art Works - Coshocton, OH. 1920's - 2 3/4"T x 4 1/4"L - The Peirce Collection

---



### 30: Saint Luke's Tower Bank

USD 225 - 275

A.C. Rehberger Co. - Chicago, IL. 1930 - 5 3/4"T x 5"W - The Peirce Collection

---



### 31: Two Building Still Banks

USD 150 - 200

A.C. Rehberger Co. - Chicago, IL. 1920/30's - Larger is 3 3/4"T x 5 1/2"W - The Peirce Collection

---



### 32: Lamar Life Insurance Building with Key - Jackson Mississippi

USD 125 - 175

American Art Company - Coshocton, OH. 1930 - 4 7/8"T x 3 1/2"D - The Peirce Collection

---

## RSL ONLINE AUCTION - Late Spring 2026



**33: Two Aluminum Building Banks - Worcester Federal / Provident Savings Bank**  
American 1930's - Larger is 3"T x 4 3/4"L - The Peirce Collection

USD 150 - 200



**34: Saint Paul Ev. Lutheran Church Bank**  
A.C. Rehberger Co. - Chicago, IL. 1937 - 6 1/4"T x 4 1/4"D - The Peirce Collection

USD 150 - 200



**35: The Home Bank - Deep Version - A Very Scarce Bank**  
J & E Stevens Co. - Cromwell, CT. 1870's - 5 1/4"T x 4 1/4"W - The Peirce Collection

USD 900 - 1,200



**36: Roper Stove Cast Iron Still Bank**  
Arcade Mfg. Co. - Freeport, IL. 1930 - 4 1/4"T x 3 3/4"W - The Peirce Collection

USD 150 - 200



**37: Savings Chest Cast Iron Bank**  
By Henry C. Hart - Detroit, MI. 1890's - 4 1/2"T x 6 1/4"W - The Peirce Collection

USD 200 - 250



**38: The Piano Bank - Scarce**  
American Circa 1910 - 5 3/4"T x 8"L - The Peirce Collection

USD 350 - 450



**39: Lilliput Mechanical Bank - Yellow Version**  
J & E Stevens Co. - Cromwell, CT. 1880 - 4 1/4"T x 3"W - The Peirce Collection

USD 450 - 550



**40: Frog on Lattice Mechanical Bank - Scarce Blue and Brown Base**  
J & E Stevens Co. - Cromwell, CT. 1870's - 4"T x 4 1/4"Diameter - The Peirce Collection

USD 500 - 700

**RSL ONLINE AUCTION - Late Spring 2026**



**41: Lilliput Mechanical Bank - Patriotic Colors**

USD 500 - 600

J & E Stevens Co. - Cromwell, CT. 1880 - 4 1/4"T x 3"W - The Peirce Collection

---



**42: Snappit Cast Iron Mechanical Bank**

USD 250 - 325

H.L. Judd Company - Wallingford, CT. 1880's - 4"T x 3"W - The Peirce Collection

---



**43: Memorial Money Bell Mechanical Bank**

USD 450 - 550

Unknown American Maker - Circa 1893 - 6"T x 4 1/2"Square - The Peirce Collection

---



**44: Dog on Turntable Cast Iron Mechanical Bank - Japanned with Green Wash**

USD 300 - 400

H.L. Judd Company - 4 3/4"T x 5 1/2"D - The Peirce Collection

---



**45: The Chandlers Cast Iron Mechanical Bank**

USD 250 - 325

National Brass Works - Cleveland, OH. 1895 - 4 1/2"T x 4"W - The Peirce Collection

---



**46: Cabin Bank - Yellow Version**

USD 350 - 450

J & E Stevens Co. - Cromwell, CT. 1885 - 3 1/2"T x 4 1/2"D - The Peirce Collection

---



**47: Uncle Tom Mechanical Bank with Star and Lapels - Olive Green**

USD 250 - 325

Kyser and Rex Co. - Philadelphia 1890 - 5 1/2"T x 4 1/4"W - The Peirce Collection

---



**48: Frog on Lattice Mechanical Bank**

USD 400 - 500

J & E Stevens Co. - Cromwell, CT. 1870's - 4"T x 4 1/4"Diameter - The Peirce Collection

---

## RSL ONLINE AUCTION - Late Spring 2026



**49: Elephant with Howdah Mechanical Bank**

USD 250 - 325

Hubley Mfg. Co. - Lancaster, PA. 1930 - 5 1/2"T x 8 1/2"L - The Peirce Collection

---



**50: Artillery Bank - Nickel Plated**

USD 550 - 750

Shepard Hardware - Buffalo, NY. 1890 - 6"T x 8"W - The Peirce Collection

---



**51: Cat and Mouse Cast Iron Mechanical Bank**

USD 900 - 1,200

J & E Stevens Co. - Cromwell, CT. 1890 - 9"T x 5 1/2"W - The Peirce Collection

---



**52: Bulldog - Blue Blanket**

USD 550 - 750

J & E Stevens Co. - Cromwell, CT. 1890 - 8"T x 7"W - The Peirce Collection

---



**53: Trick Pony Cast Iron Mechanical Bank**

USD 600 - 800

Shepard Hardware - Buffalo, NY. 1885 - 7 3/4"T x 7"W - The Peirce Collection

---



**54: Teddy and The Bear Cast Iron Mechanical Bank - Brown Tree Version**

USD 600 - 800

J & E Stevens Co. - Cromwell, CT. 1907 - 7"T x 10"W - The Peirce Collection

---



**55: Darktown Battery Cast Iron Mechanical Bank - Very Desirable**

USD 1,200 - 1,500

J & E Stevens Co. - Cromwell, CT. 1887 - 7 1/2"T x 10"W - The Peirce Collection

---



**56: Novelty Mechanical Bank - Tan, Brown and Green Version**

USD 450 - 550

J & E Stevens Co. - Cromwell, CT. 1870's - 6 3/4"T x 5"W - The Peirce Collection

---

**RSL ONLINE AUCTION - Late Spring 2026**



**57: Dime Beehive Registering Bank**

USD 200 - 250

Made by H & H - American 1895 - 5 1/2"T x 6 1/2"W - The Peirce Collection

---



**58: Tammany Cast Iron Mechanical Bank - Brown Coat Version**

USD 300 - 400

J & E Stevens Co. - Cromwell, CT. 1870's - 5 3/4"T x 3"W - The Peirce Collection

---



**59: Rose Window Cast Iron Still Bank**

USD 60 - 90

H.L. Judd Co. - Wallingford, CT. 1880's - 2 1/4"T x 2 1/4"W - The Peirce Collection

---



**60: Painted Double Door Still Bank**

USD 125 - 175

Grey Iron Casting Company - Columbia, PA. 1895 - 5 1/2"T x 4"W - The Peirce Collection

---



**61: Snappit Still Bank - Scarce**

USD 250 - 325

H.L. Judd Co. - Wallingford, CT. 1880's - 4"T x 3"W - The Peirce Collection

---



**62: City Bank with Teller - Black Japanned with Highlights**

USD 250 - 325

H.L. Judd Co. - Wallingford, CT. 1880's - 5 1/2"T x 3 1/4"W - The Peirce Collection

---



**63: Home Saving Bank - Patriotic Colors**

USD 200 - 250

J & E Stevens Co. - Cromwell, CT. 1890 - 6"T x 4 1/2"W - The Peirce Collection

---



**64: Flat Iron Bank - Second Smallest**

USD 80 - 120

Kenton Hardware - Kenton, OH. 1915 - 5 1/2"T x 3 1/2"W - The Peirce Collection

---

**RSL ONLINE AUCTION - Late Spring 2026**



**65: Two U.S. Mail Still Banks**

USD 75 - 100

Hubley Mfg. Co. - Lancaster, PA. 1920's - Larger is 4"T x 3 1/4"W - The Peirce Collection

---



**66: Amherst Stoves Buffalo Bank - Aluminum Version**

USD 100 - 150

American 1930's - 5 1/4"T x 8"W - The Peirce Collection

---



**67: Amherst Stoves Buffalo - Cast Iron Painted Gold**

USD 175 - 225

American 1920 - 5 1/4"T x 8"W - The Peirce Collection

---



**68: Dreadnought Bank**

USD 175 - 225

Sydenham and McOustra Ltd. - English 1910 - 7"T x 7 1/2"W - The Peirce Collection

---



**69: Piano Bank - Sheet Steel Advertises for Giles Bros.**

USD 150 - 200

Made by R.L. Berry - American 1920's - 5 1/4"T x 6"W - The Peirce Collection

---



**70: Cast Iron Piano Still Bank - Very Scarce**

USD 350 - 450

Similar in design to previous lot - American 1920's - 7 1/4"T x 7"W - The Peirce Collection

---



**71: Western Themed Still Banks - 6 Aluminum**

USD 80 - 120

Most by Banthrico - American 1950/60's - Largest is 6 1/2"T x 4 1/4"W - Tom Kellogg Collection

---



**72: Assorted Aluminum Bust Banks - 6**

USD 80 - 120

Most by Banthrico - American 1950/60's - Largest is 6"T x 3 1/2"W - Tom Kellogg Collection

---

## RSL ONLINE AUCTION - Late Spring 2026



### 73: Seven Aluminum Still Banks

USD 80 - 120

Most by Banthrico Corp. - American 1950/60's - Largest 6 1/2"T x 4 1/2"W - Tom Kellogg Collection

---



### 74: Five Assorted Aluminum Banks

USD 80 - 120

Banthrico Corp. - American 1950/60's - Largest is 5 1/2"T x 3 1/2"W - Tom Kellogg Collection

---



### 75: Eight Assorted Automobile / Transportation Banks

USD 100 - 150

Most are by Banthrico Corp. - American 1960/70's - Largest is 7"L x 2 3/4"T - Tom Kellogg Collection

---



### 76: Four Aluminum Banks

USD 60 - 80

American / English 1950/60's - Largest is 5"T x 3"W - Tom Kellogg Collection

---



### 77: Three Aluminum Banks

USD 60 - 90

American / Japanese 1950/60's - Largest is 5"T x 3"W - Tom Kellogg Collection

---



### 78: Group of Six Assorted Banks - Aluminum, Glass, Ceramic

USD 75 - 100

1950's - 1970's - Largest is 6"T x 3"W - Tom Kellogg Collection

---



### 79: Five Modern Cast Iron Still Banks

USD 80 - 120

American 1950's to 1980's - Buffalo is 7"L x 4 1/2"T - Tom Kellogg Collection

---



### 80: Two Ceramic Still Banks

USD 100 - 150

European 1930's - Dog house is 2 3/4"T x 4 1/4"W - Tom Kellogg Collection

---

**RSL ONLINE AUCTION - Late Spring 2026**



**81: Tammany Mechanical Bank**

USD 100 - 150

J & E Stevens Co. - Cromwell, CT. 1870's - 5 3/4"T x 3"W - Tom Kellogg Collection

---



**82: Magic Cast Iron Mechanical Bank**

USD 175 - 225

J & E Stevens Co. - Cromwell, CT. 1880's - 5 1/4"T x 4"W - Tom Kellogg Collection

---



**83: Limited Edition Bill E. Grin Still Bank - Aluminum**

USD 100 - 150

Made by Dr. Greg Zemenick - American 1990's - 4"T x 3"W - Tom Kellogg Collection

---



**84: Two State Banks with Straight Letters**

USD 80 - 120

Kenton Hardware - Kenton, OH. 1900 - 4 1/4"T x 3"W - Tom Kellogg Collection

---



**85: Two State Banks with Straight Letters**

USD 80 - 120

Kenton Hardware - Kenton, OH. 1900 - 4 1/4"T x 3"W - Tom Kellogg Collection

---



**86: Deposit Bank / Painted Dome Bank**

USD 150 - 200

American 1900/1910's - Taller one is 4 3/4"T x 3 1/4"W - Tom Kellogg Collection

---



**87: Modern State Bank / Banthrico Coconut**

USD 30 - 50

American 1970's / 2000 - Larger is 4"T x 3"W - Tom Kellogg Collection

---



**88: Bureaux Caisse Bank - Brass**

USD 80 - 120

French 1920 - 8"T x 6 1/2"W - Tom Kellogg Collection

---

**RSL ONLINE AUCTION - Late Spring 2026**



**89: Two Small Mosque Banks - Gold and Japanned Versions**

USD 80 - 120

A.C. Williams Co. - Ravenna, OH. 1915 - 3"T x 2 1/2"W - Tom Kellogg Collection

---



**90: Jewel Bank / Domed Bank**

USD 80 - 120

American 1915 - 4"T x 3 1/4"W - Tom Kellogg Collection

---



**91: City Bank with Teller - Copper Painted Version**

USD 75 - 100

H.L. Judd Company - Wallingford, CT. 1880's - 5"T x 3 1/4"W - Tom Kellogg Collection

---



**92: Building with Four Turrets - Painted Example**

USD 80 - 120

Grey Iron Casting Co. - Columbia, PA. 1895 - 5 1/2"T x 4"W - Tom Kellogg Collection

---



**93: Log Cabin Bank - Center Chimney**

USD 125 - 175

Kyser and Rex Company - Philadelphia 1890 - 2 1/2"T x 3 1/2"W - Tom Kellogg Collection

---



**94: Quadrafoil / One Story House**

USD 100 - 150

American 1895 - 3"T x 2 1/4"W - Tom Kellogg Collection

---



**95: Two Painted One Story House Banks**

USD 80 - 120

J & E Stevens Co. - Cromwell, CT. 1880's - 3"T x 2 1/4"W - Tom Kellogg Collection

---



**96: Two Small Cupola Banks**

USD 80 - 120

J & E Stevens Co. - Cromwell, CT. 1870's - 3"T x 2 1/2"W - Tom Kellogg Collection

---

**RSL ONLINE AUCTION - Late Spring 2026**



**97: Cupola Bank - Small**

USD 80 - 120

J & E Stevens Co. - Cromwell, CT. 1870's - 3 1/4"T x 2 1/2"W - Tom Kellogg Collection

---



**98: Cupola Bank - Medium**

USD 100 - 150

J & E Stevens Co. - Cromwell, CT. 1870's - 4 1/4"T x 3 1/4"W - Tom Kellogg Collection

---



**99: Cupola Bank - Medium**

USD 100 - 150

J & E Stevens Co. - Cromwell, CT. 1870's - 4 1/4"T x 3 1/4"W - Tom Kellogg Collection

---



**100: Cupola Medium / Crown Bank Medium**

USD 100 - 150

J & E Stevens Co. - Cromwell, CT. 1870's - 4 1/4"T x 3 1/4"W - Tom Kellogg Collection

---



**101: Cupola Bank with Porcelainized Finish**

USD 80 - 120

Ohio Foundry Co. - Cleveland, OH. 1947 - 5 1/2"T x 4"W - Tom Kellogg Collection

---



**102: Two Modern Still Banks**

USD 125 - 175

Bear Stearns / U.S. Treasury - American 1950's / 1970's - Larger is 4 3/4"T x 4 1/2"W - Tom Kellogg Collection

---



**103: Two Teepee Banks - One Aluminum / One Cast Iron**

USD 50 - 75

American 1960's - 4 3/4"T x 3 1/8"W - Tom Kellogg Collection

---



**104: Bankers Trust Bank / Old Fort Bank**

USD 100 - 150

Rehberger / American Art Work - American 1950/60's - 6 1/2"T x 3 1/2"D - Tom Kellogg Collection

---

## RSL ONLINE AUCTION - Late Spring 2026



**105: Lincoln Coin Bank / Independence Hall - One Brass / One Aluminum**  
American 1950/60's - Independence Hall is 5"T x 4"W - Tom Kellogg Collection

USD 80 - 120



**106: Two European Tin Banks**  
European 1930/1950's - 3 1/2"T x 2 3/4"W - Tom Kellogg Collection

USD 50 - 75



**107: Three Banthrico Banks**  
Chicago, IL. 1960/70's - Truck is 2 3/4"T x 6"L - Tom Kellogg Collection

USD 40 - 60



**108: Ceramic Beehive Still Bank**  
German 1940's - 3 1/2"T x 2 3/4"W - Tom Kellogg Collection

USD 40 - 60



**109: Half an Ear of Corn - Ceramic Still Bank**  
German 1930's - 7 3/4"L x 1"T - Tom Kellogg Collection

USD 75 - 100



**110: Three Cast Iron Mailbox Banks**  
American 1930's - Largest is 4 3/4"T x 3 1/2"W - Tom Kellogg Collection

USD 50 - 75



**111: Washington Bell / Street Clock**  
American 1920's - Clock is 6"T x 2 1/2"W - Tom Kellogg Collection

USD 80 - 120



**112: Peoples Home Bank - Safe**  
Mudd MFG Co. - Chicago, IL. 1895 - 5"T x 4 1/8"D - Tom Kellogg Collection

USD 80 - 120

## RSL ONLINE AUCTION - Late Spring 2026



### 113: Scroll Safe / Modern Safe

USD 60 - 90

American 1900 to 1997 - 4 1/8"T x 2 3/4"W - Tom Kellogg Collection

---



### 114: Baseballs on Rack Bank

USD 60 - 90

American 1960's - 5 3/4"T x 4"W - Tom Kellogg Collection

---



### 115: Fido on Pillow Bank

USD 60 - 90

Hubley MFG Co. - Lancaster, PA. 1930's - 6"T x 7 1/2"W - Tom Kellogg Collection

---



### 116: Lion and Elephant Banks

USD 60 - 90

A.C Williams Co. Ravenna, OH 1920, 3 3/4" T x 4 3/4" L - Tom Kellogg Collection

---



### 117: Irish Setter/ Rooster - Aluminum

USD 60 - 90

American 1920/30's - Rooster is 4 3/4" T x 3 1/2" L - Tom Kellogg Collection

---



### 118: Middy/ Billiken Banks

USD 60 - 90

American 1910/20's - Middy is 5 1/4" T x 2 1/2" W - Tom Kellogg Collection

---



### 119: Two Modern People Still Banks

USD 60 - 90

American 2000's - 6" T x 2 1/2" W - Tom Kellogg Collection

---



### 120: Jackie Coogan by An Organ Silver Lead Still Bank

USD 60 - 90

German 1920 - 3 1/4" T x 3 1/2" W - Tom Kellogg Collection

---

## RSL ONLINE AUCTION - Late Spring 2026



### 121: Modern / SBCCA Convention Still Bank

USD 100 - 150

American 1960's to 2000's - Tallest is 7 5/8" - Tom Kellogg Collection

---



### 122: Three Boxed Dime Register Banks

USD 60 - 90

J. Chein & Company - Burlington, NJ 1950 - 2 3/4" T x 2 1/4" W - Tom Kellogg Collection

---



### 123: Three Boxed Dime Register Banks

USD 60 - 90

J. Chein & Company - Burlington, NJ 1950 - 2 3/4" T x 2 1/4" W - Tom Kellogg Collection

---



### 124: Composition Buddha w/ Fan Bank

USD 50 - 75

Japanese 1920's - 5 1/2" T x 4 3/4" W - Tom Kellogg Collection

---



### 125: Two Charlie McCarthy Still Bank

USD 80 - 120

One Composition/ One Aluminum - Taller is a Souvenir of Atlantic City - Taller is 9 1/8" - Tom Kellogg Collection

---



### 126: Three Aluminum Santa Banks

USD 80 - 120

American 1950's - Largest is 6 1/4" T x 5 1/2" W - Tom Kellogg Collection

---



### 127: Two Wooden Still Banks

USD 50 - 75

American 1930's - House is 5 3/4" T x 4 3/4" W - The Alvin Goldstein Collection

---



### 128: Two Tin Still Banks - One a Drum/ One a Hand Bellows

USD 80 - 120

American/English 1890's - Bellows are 8 3/4" T x 4" W - The Alvin Goldstein Collection

---

**RSL ONLINE AUCTION - Late Spring 2026**



**129: National Safe Bank - Tin & Iron**

USD 50 - 75

American 1910's - 4 3/4" T x 3 3/4" W - The Alvin Goldstein Collection

---



**130: Eureka Trust Savings Bank Cast Iron Safe**

USD 50 - 75

Mudd MFG Co. Chicago, IL 1900 - 5 3/4" T x 4 1/2" W

---

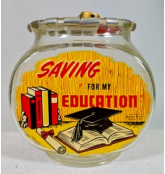


**131: Royal Safe Deposit Cast Iron Bank**

USD 60 - 90

Henry Hart Company - Detroit, MI. 1895 - 6" T x 5 1/4" W - The Alvin Goldstein Collection

---



**132: Saving For My Education Glass Bank**

USD 50 - 75

Bower MFG Co. Goshen, IN 1950 - 5" T x 5" W - The Alvin Goldstein Collection

---



**133: Save for a Rainy Day Bubble Bank**

USD 40 - 60

Vie Moran Company - Bradford, PA 1930's - 6 1/2" T x 5" W - The Alvin Goldstein Collection

---



**134: A Little Doe Bubble Bank**

USD 60 - 90

Vie Moran Company - Bradford, PA 1930's - 6 1/2" T x 5" W - Alvin Goldstein Collection

---



**135: Two One Story Horse Banks**

USD 40 - 60

American 1900 - 3" T x 2 1/4" W - The Alvin Goldstein Collection

---



**136: State Bank/ 1876 Bank**

USD 50 - 75

American 1899/1876 - 4 1/8" T x 3 W - The Alvin Goldstein Collection

---

**RSL ONLINE AUCTION - Late Spring 2026**



**137: Tower Bank**

USD 125 - 175

John Harper LTD. English 1895 - 9 1/2" T x 3 7/8" W - The Alvin Goldstein Collection

---



**138: Woolworth/ Dome Building Banks**

USD 60 - 90

American 1915- Woolworth is 5 3/4" T - The Alvin Goldstein Collection

---



**139: Skyscraper with Six Turrets**

USD 80 - 120

A.C Williams Co. Ravenna, OH 1915 - 6 5/8" T x 4 1/4" W

---



**140: Three Silver Bank Buildings: Six Sided, Dome and Colonial House**

USD 100 - 150

Dome Bank is 4 7/8" T x 3 1/4" W - The Alvin Goldstein Collection

---



**141: Home Savings Bank**

USD 50 - 75

J & E Stevens Company Cromwell, CT. 1891 - 6 1/8" T x 4 1/4" W - The Alvin Goldstein Collection

---



**142: Globe with Eagle Bank**

USD 40 - 60

American 1880 - 5 7/8" T x 3 1/4" W

---



**143: Double Horse Desk Fixture**

USD 60 - 90

Hubley MFG Co. Lancaster, PA 1930's - 6 1/8" T x 7 1/2" L - The Alvin Goldstein Collection

---



**144: Lion & Paddle Wheel Boat Banks**

USD 60 - 90

American 1910's - Boat is 1 1/2" T x 8 1/4" L

---

**RSL ONLINE AUCTION - Late Spring 2026**



**145: Miniature Singer Sewing Machine - Mint in Box**

USD 125 - 175

Singer Sewing Machine Company - Indiana 1948- Box is 9 3/4" W x 8" D x 4 3/4" T - The Alvin Goldstein Collection

---



**146: Abraham Lincoln Bust Bank Very Large - Made of Chalk**

USD 75 - 100

American 1920's - 12 3/4" T x 10 3/4" W - The Alvin Goldstein Collection

---



**147: Sheet Steel Steam Shovel**

USD 80 - 120

American 1930 - 17" T x 20 1/2" L - The Alvin Goldstein Company

---



**148: Mousegetar - Jr.**

USD 30 - 50

Made by Mattel Chinese 1998 - Box is 16 1/2" W x 7" T - The Alvin Goldstein Collection

---



**149: Two Small Horse Drawn Toys**

USD 80 - 120

Sulky/ Plantation Cart - Kenton Hardware Kenton, OH. 1915 - Larger is 3 1/2" T x 5 1/8" L - The Olshefski Collection

---



**150: One Horse Road Cart**

USD 100 - 150

Hubley MFG Co. Lancaster, PA. 1915 - 3 3/4" T x 7 1/4" L - The Olshefski Collection

---



**151: Cast Iron Sulky**

USD 50 - 75

Hubley MFG Co. Lancaster. PA. 1915 - 2 5/8" T x 4 3/6" L - The Olshefski Collection

---



**152: Mid Size Cast Iron Sulky**

USD 75 - 100

Hubley MFG Co. Lancaster, PA. 1915 - 3 1/2" T x 6" L - The Olshefski Collection

---

## RSL ONLINE AUCTION - Late Spring 2026



**153: Large Cast Iron Sulky**

USD 125 - 175

Hubley MFG Co. Lancaster, PA 1915 - 4" T x 7 1/8" L - The Olshefski Collection

---



**154: Large Cast iron Sulky**

USD 125 - 175

Hubley MFG Co. Lancaster, PA. 1915 - 5 1/8" T x 7 7/8" L - The Olshefski Collection

---



**155: Midsize Reed Cart**

USD 80 - 120

Hubley MFG Co. Lancaster, PA. 1915 - 3 1/2" T x 7" L

---



**156: Single Horse Fire Pumper**

USD 80 - 120

Hubley MFG Co. Lancaster, PA 1915 - 3 1/2" T x 9 1/4" L - The Olshefski Collection

---



**157: Dinkey Drown Midsize Coal Wagon**

USD 80 - 120

Hubley MFG Co. Lancaster, PA. 1915 - 3" T x 9" L - The Olshefski Collection

---



**158: U.S. Mail Horse Drawn Track**

USD 125 - 175

A.C Williams Co. Ravenna, OH 1915 - 3 1/2" T x 6 1/4" L - The Olshefski Collection

---



**159: Diminutive Yellow Road Cart**

USD 60 - 90

Hubley MFG Co. Lancaster, PA 1910 - 2" T x 5 1/4" L - The Olshefski Collection

---



**160: Miniature Blue Chariot**

USD 80 - 120

Hubley MFG Co. Lancaster, PA 1910 - 3 1/2" T x 5" L - The Olshefski Collection

---

**RSL ONLINE AUCTION - Late Spring 2026**



**161: Clown Chariot**

USD 100 - 180

Dent Hardware - Fullerton, PA - 1910 - 4 1/2" T x 8" L - The Olshefski Collection

---



**162: Clown Chariot**

USD 125 - 175

Kenton Hardware - Kenton, OH. 1910 - 4 1/2" T x 7 1/2" L - The Olshefski Collection

---



**163: Blue Road Cart**

USD 80 - 120

A.C Williams Co. Ravenna, OH. 1915 - 4" T x 7" L - The Olshefski Collection

---



**164: Chester Gump Cart**

USD 150 - 200

Arcade MFG Co. Freeport, IL. 1920 - 4 5/8" T x 7 1/4" L - The Olshefski Collection

---



**165: Blue Shell Cart**

USD 125 - 175

Dent Hardware Fullerton, PA. 1915 - 4 1/8" T x 8 3/4" L - The Olshefski Collection

---



**166: Green Single Horse Road Cart**

USD 80 - 120

A.C. Williams Company Ravenna, OH. 1915 - 4 1/2" T x 7" L - The Olshefski Collection

---



**167: Single Horse Hansom Cab**

USD 150 - 200

Hubley MFG Co. Lancaster, PA 1910 - 5 3/8" x 8" L

---



**168: City Sprinkler Wagon - Scarce**

USD 150 - 200

Hubley MFG Co. Lancaster, PA 1910 - 4 3/4" T x 8 3/8" L - The Olshefski Collection

---

## RSL ONLINE AUCTION - Late Spring 2026



### 169: Donkey Drawn Yellow Cart

USD 125 - 175

Hubley MFG Co. Lancaster, PA 1910- 4 5/8" T x 11 1/2" L - The Olshefski Collection

---



### 170: Cow Drawn Plantation Cart

USD 80 - 120

Kenton Hardware, Kenton, OH. 1915 - 4" T x 6 5/8" L - The Olshefski Collection

---



### 171: Blue Coal Wagon

USD 100 - 150

A.C. Williams Co. Ravenna, OH 1915 - 4 1/8" T x 9" L - The Olshefski Collection

---



### 172: Royal Circus Lion Cage

USD 125 - 175

Hubley MFG Co. Lancaster, PA. 1910 - 5 1/4" T x 9" L

---



### 173: Royal Circus Bear Cage - Scarce in Orange

USD 150 - 200

Hubley MFG Co. Lancaster. PA 1910 - 5 1/4" T x 9" L - The Olshefski Collection

---



### 174: Two Horse Royal Circus Rhino Cage

USD 200 - 250

Hubley MFG Co. Lancaster, PA. 1910 - 6 3/4" T x 11 5/8" L

---



### 175: Clown Chariot

USD 350 - 450

Hubley MFG Co. Lancaster, PA. 1910 - 6 7/8" T x 10" L - The Olshefski Collection

---



### 176: Three Horse Woman Chariot

USD 400 - 500

Wilkins Hardware Company - Keene, NH. 1905 - 5 3/4" T x 10 1/4" L - The Olshefski Collection

---

## RSL ONLINE AUCTION - Late Spring 2026



**177: Hansom Cab**

USD 450 - 550

Ives, Blakeslee Company Bridgeport, CT. 1895 - 6 7/8" T x 10 1/4" L - The Olshefski Collection

---



**178: Sulky with Integral Figure**

USD 125 - 175

A.C Williams Co. Ravenna, OH 1915 - 4 7/8" T x 7 3/4" L

---



**179: Single Horse Stake Wagon Cast Iron & Sheet Tin**

USD 100 - 150

Hubley MFG Co. Lancaster. PA 1915 - 4 7/8" T x 11 1/2" L - The Olshefski Collection

---



**180: Green Two Horse Coal Wagon Cast Iron & Sheet Tin**

USD 150 - 200

Hubley MFG Co. Lancaster, PA 1915 - 4" T x 11" L - The Olshefski Collection

---



**181: Large Scale Single Horse Coal Wagon**

USD 550 - 750

Hubley MFG Co. Lancaster PA. 1900 - 7" T x 15" L - The Olshefski Collection

---



**182: Polar Ice Wagon Scarce with Large Horse**

USD 450 - 550

Kenton Hardware Kenton, OH. 1915 - 6" T x 14" L - The Olshefski Collection

---



**183: Red Single Horse Coal Wagon**

USD 200 - 250

Hubley MFG Co. Lancaster PA. 1915 - 6" T x 12 3/4" L - The Olshefski Collection

---



**184: Silver Express Wagon**

USD 100 - 150

Hubley MFG Co. Lancaster PA. 1915 - 3 1/2" T x 8 3/4" L - The Olshefski Collection

---

## RSL ONLINE AUCTION - Late Spring 2026



### 185: Barrel Wagon

USD 100 - 150

Wilkins Hardware - Keene, NH. 1905 - 3" T x 14 3/4" L - The Olshefski Collection

---



### 186: Single Horse Road Cart

USD 300 - 400

Hubley MFG Co. Lancaster, PA. 1896 - 4 3/4" T x 11" L - The Olshefski Collection

---



### 187: Two Horse Transfer Wagon

USD 550 - 700

Hubley MFG Co. Lancaster PA, 1906 - 8 3/8" T x 16 7/8" L - The Olshefski Collection

---

Image unavailable

### 188: Three Horse Fire Pumper

USD 150 - 200

Hubley MFG Co. Lancaster PA 1915 - 4 1/2" T x 11 1/2" L - The Olshefski Collection

---



### 189: Yellow Three Horse Fire Pumper

USD 200 - 250

Hubley MFG Co. Lancaster, PA 1910 - 4 1/2" T x 13 7/8" L - The Olshefski Collection

---



### 190: Three Horse Aerial Water Tower

USD 250 - 325

Dent Hardware - Fullerton, PA. 1915 - 4 1/8" T x 14" L - The Olshefski Collection

---



### 191: Three Horse Ladder Track

USD 150 - 200

Hubley MFG Co. Lancaster, PA. 1915 - 5 1/2" T x 15 1/2" L - The Olshefski Collection

---



### 192: Single Horse Hose Reel - Green

USD 250 - 325

Hubley MFG Co. Lancaster PA. 1915 - 4" T x 12 3/4" L - The Olshefski Collection

---

## RSL ONLINE AUCTION - Late Spring 2026



**193: Fire Chiefs Wagon**

USD 500 - 700

Hubley MFG Co. Lancaster 1910 - 5 1/8" x 12 3/4" L - The Olshefski Collection

---



**194: Blue Two Horse Ladder Truck**

USD 500 - 700

Hubley MFG Co. Lancaster 1915 - 5 3/4" L - The Olshefski Collection

---



**195: Two Horse Nickel Plated Ladder Truck**

USD 300 - 400

Shimer Toy Company Freemansburg, PA 1900 - 5 1/2" T x 20 1/2" L - The Olshefski Collection

---



**196: Two Horse Fire Pumper**

USD 350 - 450

Shimer Toy Company Freemansburg, PA. 1900 - 4 1/2" T x 15 1/2" L - The Oldshefski Collection

---



**197: Two Horse Reel**

USD 400 - 500

Shimer Toy Company Freemansburg, PA 1900 - 4 1/2" T x 14" L - The Olshefski Collection

---



**198: Two Horse Ladder Truck**

USD 350 - 450

Shimer Toy Company Freemansburg, PA 1900 - 6" T x 20 5/8" L - The Olshefski Collection

---



**199: Two Horse Ladder Truck**

USD 175 - 225

Hubley MFG Co. Lancaster PA. 1910 - 7 1/8" T x 18" L - The Olshefski Collection

---



**200: Cupid Cart - Scarce**

USD 250 - 325

Kenton Hardware - Kenton, OH. 1905 - 4 1/2" T x 8 1/2" L - The Olshefski Collection

---

## RSL ONLINE AUCTION - Late Spring 2026



### 201: Two Horse Road Cart

USD 400 - 500

Carpenter Toy Co. New York 1880's - 5 1/2" T x 12 3/8" L - The Olshefski Collection

---



### 202: Donkey Drawn Stake Wagon

USD 225 - 275

Wilkins Hardware - Keene, NH 1905 - 4 7/8" T x 13 1/2" L - The Olshefski Collection

---



### 203: Double Oxen Plantation Cart

USD 250 - 325

Dent Hardware Fullerton, PA. 1915 - 6 1/8" T x 14 3/4" L

---



### 204: Oxen Drawn Coal Wagon

USD 300 - 400

Dent Hardware Fullerton, PA. 1915 - 6 5/8" T x 12 1/4" L - The Olshefski Collection

---



### 205: Two Horse Early Stake Wagon

USD 800 - 1,000

Welker & Crosby Company - Brooklyn, NY. 1880's - 5 3/8" T x 15 1/4" L - The Olshefski Collection

---



### 206: Fawn Doorstop

USD 225 - 275

Designed by Taylor Cook - Made by Hubley MFG Co. - Lancaster, PA. 1930 - 9 3/4" T x 5 3/4" W

---



### 207: Peter Rabbit Doorstop - Scarce

USD 350 - 450

American 1930 - 8 3/8" T x 4 1/2" W

---



### 208: Young Boy and Girl Doorstop

USD 175 - 225

Unknown Maker - American 1910 - 6" T x 3 1/8" W

---

**RSL ONLINE AUCTION - Late Spring 2026**



**209: Cocker Spaniel Doorstop**

USD 200 - 250

Hubley MFG Co. - Lancaster, PA. 1930 - 6 3/4"T x 11"L

---



**210: Girl with Flower Baskets**

USD 100 - 150

American 1930 - 8"T x 4 3/4"W

---



**211: Maiden Doorstop**

USD 175 - 225

American 1920 - 8 7/8"T x 3 3/4"W

---



**212: Man with Flowers Doorstop**

USD 225 - 275

American 1920 - 9"T x 3 3/4"W

---



**213: Colonial Pilgrim**

USD 250 - 325

Hubley MFG Co. - Lancaster, PA. 1930 - 8 5/8"T x 5 3/8"W

---



**214: Mammy Door Stop - Large Version**

USD 250 - 325

Hubley MFG Co. - Lancaster, PA. 1930 - 12"T x 7 1/2"W

---



**215: Senorita Doorstop**

USD 250 - 325

American 1930 - 11"T x 8 5/8"W

---



**216: Huck Finn Doorstop**

USD 250 - 325

Littco Products - American 1930 - 12 3/8"T x 9 1/4"W

---

**RSL ONLINE AUCTION - Late Spring 2026**



**217: Spanish Galleon Doorstop**  
American 1920's - 8"T x 9 1/2"W

USD 100 - 150

---



**218: Man on Cotton Bale Doorstop - Very Scarce**  
American 1920 - 8 7/8"T x 6 7/8"W

USD 800 - 1,000

---



**219: Three Masted Ship Doorstop**  
American 1920's - 12 1/4"T x 10"W

USD 100 - 150

---



**220: Policeman Doorstop**  
LcMur Lgt Co. - American 1920's - 7 3/4"T x 4 1/4"W

USD 200 - 250

---



**221: Sheep Doorstop**  
American 1920 - 7 3/8"T x 10 1/4"L

USD 150 - 200

---



**222: Basket of Flowers Doorstop**  
American 1920 - 13 3/4"T x 7"W

USD 100 - 150

---



**223: Mutt and His Bone Doorstop**  
American 1930 - 8 1/2"T x 5 1/2"W

USD 150 - 200

---



**224: Overhead Swinging Golfer Doorstop**  
Hubley MFG Co. - Lancaster, PA. 1930 - 9 1/4"T x 7"W

USD 225 - 275

---

**RSL ONLINE AUCTION - Late Spring 2026**



**225: Clipper Ship Weathervane**

American 1920 - 9"T x 5 5/8"W

USD 80 - 120

---



**226: Large Maritime Themed Doorstop**

American 1930 - 11 1/2"T x 10 1/2"W

USD 175 - 225

---



**227: Elephant with Raised Coin Slot**

American 1920's - 4 1/8"T x 6 1/4"W

USD 80 - 120

---



**228: Elephant with Howdah**

Hublely MFG Co. - Lancaster, PA. 1930 - 5 3/8"T x 7 1/4"L

USD 225 - 275

---



**229: Frog on Rock**

Kilgore MFG Co. - Westerville, OH. 1920 - 2 1/2"T x 2 1/2"D

USD 350 - 450

---



**230: Teddy and The Bear Mechanical Bank - Brown Tree Version**

J & E Stevens Co. - Cromwell, CT. 1907 - 7"T x 10"L

USD 700 - 900

---



**231: Punch and Judy Mechanical Bank - Large Letters Version**

Shepard Hardware Co. - Buffalo, NY. 1885 - 7 1/4"T x 6 1/8"W

USD 500 - 600

---



**232: Speaking Dog Mechanical Bank - Red Dress Version**

J & E Stevens Co. - Cromwell, CT. 1895 - 7"T x 7 1/8"L

USD 800 - 1,000

---

**RSL ONLINE AUCTION - Late Spring 2026**



**233: Save for a Rainy Day Bubble Bank**

USD 60 - 90

Vic Moran Company - Bradford, PA. 1930/40's - 6 1/2"T x 5"W

---



**234: Save for a New Car Bubble Bank**

USD 150 - 200

Vic Moran Company - Bradford, PA. 1940's - 6 1/2"T x 5"W

---



**235: V is for Victory Bubble Bank**

USD 150 - 200

Vic Moran Company - Bradford, PA. 1940's - 6 1/2"T x 5"W

---



**236: American Tin Church Bank**

USD 350 - 450

George Brown Company - Forestville, CT. 1880 - 12 1/8"T x 5 1/2"W

---



**237: Two Lion Cast Iron Banks**

USD 60 - 90

A.C. Williams Co. - Ravenna, OH. 1920's - Lion Tub is 4 3/8"T x 2"W

---



**238: Seated Car with Fine For**

USD 100 - 150

American 1920 - 4 1/8"T x 3"W

---



**239: Rearing Horse on Oblong Base**

USD 80 - 120

A.C. Williams Co. - Ravenna, OH. 1920 - 7 1/2"T x 7"W

---



**240: Three Cast Iron Safe Banks**

USD 100 - 150

American 1900/1910's - All about 3 1/2"Tall

---

**RSL ONLINE AUCTION - Late Spring 2026**



**241: Two Cast Iron Safe Banks - Coin Deposit / Army Safe**

USD 80 - 120

American 1910's - 4 1/8"T x 2 3/4"W

---



**242: Union Safe / Key lock Safe**

USD 80 - 120

American 1895 / 1905 - Each about 3 1/8"T x 2 1/2"W

---



**243: Security Safe Bank - Scarce**

USD 300 - 400

Unknown Maker - American 1890 - 5 1/8"T x 4 1/8"W

---



**244: Sampson Safe - Steel Sides Rare**

USD 300 - 400

Arcade MFG Co. - Freeport, IL. 1902 - 5 1/4"T x 4 1/8"W

---



**245: Single Car / Two Car Garage Banks**

USD 100 - 150

A.C. Williams Co. - Ravenna, OH. 1910's - 2 1/2"T x 2 3/4"W

---



**246: Domed Mosque Medium - Combination Door**

USD 80 - 120

A.C. Williams Co. - Ravenna, OH. 1910's - 5 1/8"T x 5 1/8"W

---



**247: Flat Iron Bank - Second Smallest**

USD 80 - 120

Kenton Hardware - Kenton, OH. 1915 - 5 1/2"T x 3 3/8"L

---



**248: Columbian Magic Savings Bank**

USD 125 - 175

Introduction Company - Chicago, IL. 1893 - 5"T x 5 3/8"W

---

**RSL ONLINE AUCTION - Late Spring 2026**



**249: Blackpool Tower Bank**

USD 150 - 200

Chamberlain and Hill Co. - English 1908 - 7 1/2"T x 4 3/8"W

---



**250: Tower Bank**

USD 225 - 275

Chamberlain and Hill Co. - English 1908 - 9 3/8"T x 3 3/4"Square

---



**251: Bureaux Caisse Bank - Made of Aluminum**

USD 125 - 175

French 1930's - 8 3/4"T x 6 1/2"W

---



**252: The Eagle Bank**

USD 750 - 950

Unknown Maker - American 1880's - 9 1/4"T x 5"D

---



**253: Tire - Lire Building Bank - Scarce Silver Plated Brass**

USD 550 - 750

French 1900 - 9 1/4"T x 5"W

---



**254: Australian William Tell - Tin Mechanical Bank**

USD 250 - 300

Australia 1950 - 6 1/4"T x 14 1/2"L

---



**255: I Always Did Spise A Mule Bank - Jockey Version Red Base**

USD 450 - 650

J & E Stevens Co. - Cromwell, CT. 1880's - 8"T x 10 1/4"W

---



**256: Bear - Slot in Chest Bank - Scarce**

USD 300 - 400

Kenton Hardware - Kenton, OH. 1905 - 6 5/8"T x 2 3/4"W

---

**RSL ONLINE AUCTION - Late Spring 2026**



**257: De Bug Bank**

USD 150 - 200

Charles Reynolds Maher - Virginia 2000 - 5" T x 7 7/8" W

---



**258: Comical Olive Oil Dispenser**

USD 175 - 225

Italian 1930's - Styled After Bonzo - 8" T x 6" D

---



**259: Pauls Soap Circus - Noahs Arks Toy**

USD 225 - 275

English 1920's - 6" T x 11 1/8" L

---



**260: Barrel with Hand Truck Bank**

USD 25 - 35

American 1950's - 4 1/8" T x 3" W

---



**261: Save for The New Baby Bubble Bank**

USD 100 - 150

Vic Moran Co. Bradford, CT. 1930's - 6 1/2" T x 5" W

---



**262: Save for The Kids Bubble Bank**

USD 100 - 150

Vic Moran Co. Bradford, PA. 1930/40's - 6 1/2" T x 5" W

---



**263: Cargo Ship- Wood & Tin**

USD 300 - 400

Made by Liberty Toys - American 1930's - 8 1/8" T x 27" L

---



**264: Two Turkey Chocolate Molds**

USD 60 - 90

American 1930's - Taller is 6" T x 5 1/2" D

---

**RSL ONLINE AUCTION - Late Spring 2026**



**265: America Clockwork Locomotive**

USD 1,000 - 1,500

Ives, Blakeslee Company - Bridgeport, CT. 1885 - 6 1/8" T x 11" L

---



**266: Partridge Quality Uniforms - Composition Novelty/ Paperweight**

USD 60 - 90

American 1940's/50's - 3 3/4" T x 3 1/2" W - The Peirce Collection

---



**267: Buy Wise - Buy Riverside - Composition Novelty/ Paperweight**

USD 60 - 90

American 1950's - 5" T x 3" Diameter - The Peirce Collection

---



**268: Geo F. Wagner Co. INC**

USD 80 - 120

Butter & Eggs New York - Corporate Paper Weight Aluminum - 1930's - 4 3/8" T x 3 1/4" W - The Peirce Collection

---



**269: Spalding Golf Ball Paperweight - Hard Rubber & Aluminum**

USD 100 - 150

American 1930's - 2" T x 2 1/8" Diameter - The Peirce Collection

---



**270: Rochester Button Co. Corporate Paperweight**

USD 80 - 120

American 1930's - 2" T x 2 3/8" Diameter - The Peirce Collection

---



**271: Bridge - Nut Cast Iron Paperweight**

USD 80 - 120

American 1930's - 2" T x 2 1/4" W - The Peirce Collection

---



**272: Sealtest Milk Paperweight- Made of Wood**

USD 50 - 75

American 1940's - 3 1/8" T x 2" W - The Peirce Collection

---

**RSL ONLINE AUCTION - Late Spring 2026**



**273: Dixie Farm and Poultry Journal- Composition Novelty/Paperweight**

USD 60 - 90

American 1940's - 3 3/4" T x 3 1/8" W - The Peirce Collection

---



**274: Royal Crystal Iodized Salt - Salt Lake City, Utah - Corporate Paperweight Tin and Steel**

USD 100 - 150

American 1930's - 3"T x 3"Diameter - The Peirce Collection

---



**275: Hershey's Bar Paperweight - Made of Brass**

USD 60 - 90

American 1960's - 4 3/4"L x 1 3/4"T - The Peirce Collection

---



**276: United States Savings Bonds - Brass**

USD 40 - 60

Alamo Iron Works - San Antonio, TX. 1979 - 2 5/8"T x 2 5/8"W - The Peirce Collection

---



**277: J. Spencer Turner Co. Cotton Goods - Brass Paperweight**

USD 80 - 120

Made by W&N Co. - Newark, NJ. 1930 - 3 3/8"T x 2 3/4"W - The Peirce Collection

---



**278: U.S. Mail Box Shaped Novelty/Paperweight for Bratton Letter and Printing Co.**

USD 100 - 150

Ohio's Largest - American 1940's - 3 1/2"T x 2 1/2"W - The Peirce Collection

---



**279: The Iron Fireman Paperweight for Lovejoy/Bristol Heating and Plumbing**

USD 100 - 150

Flint, MI. 1950's - 4 1/2"T x 4"W - The Peirce Collection

---



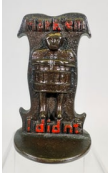
**280: American Cracker Company - Coppered Steel Paperweight**

USD 80 - 120

American late 1930's - 2 1/4"T x 2 3/4"W - The Peirce Collection

---

**RSL ONLINE AUCTION - Late Spring 2026**



**281: Cash's Woven Names Cast Iron Paperweight - Mark'Em I didnt**  
American 1930's - 4"T x 2 1/8"Diameter - The Peirce Collection

USD 75 - 100

---



**282: Standard Oil Company Corporate Paperweight - Made of Brass**  
American 1940's - 5 1/4"T x 1 3/4"W - The Peirce Collection

USD 125 - 175

---



**283: Advance Window Cleaning Cast Iron Paperweight**  
American 1930's - 3 1/4"T x 2 1/2"W - The Peirce Collection

USD 100 - 150

---



**284: Shatter Box Company Corporate Paperweight - Best Boxes in Quantities Manufacturers**  
Tacoma, Wash. 1930's - 2"T x 3 1/2"W - The Peirce Collection

USD 80 - 120

---



**285: Natco Silo - Glazed Hollow Tile**  
Made by National Fire Proofing Company - Pittsburgh, PA. 1930's - 2"T x 1 7/8"W - The Peirce Collection

USD 80 - 120

---



**286: Rust Craft Novelty/Paperweight - Shopping Cart Form**  
American 1960's - 3"T x 3"W - The Peirce Collection

USD 60 - 90

---



**287: Curtis Casket Co. Paperweight**  
American 1960 - 1 1/2"T x 5 1/2"L - The Peirce Collection

USD 75 - 100

---



**288: Elgin Permaseal Caskets - Made of Lead Alloy**  
American 1960 - 2 1/8"T x 5 5/8"L - The Peirce Collection

USD 80 - 120

---

**RSL ONLINE AUCTION - Late Spring 2026**



**289: The Leonard - Davis Co. Telephone Shaped Novelty**  
American 1940's - 1 5/8"T x 2 1/4"W - The Peirce Collection

USD 60 - 90



**290: Oliver Typewriter Brass Paperweight**  
American 1930's - 2"T x 3"W - The Peirce Collection

USD 80 - 120



**291: Bell Western Commemorative Phone - A Novelty to Celebrate Fifty Millionth Telephone in Service**  
American - November 1953 - The Peirce Collection

USD 100 - 150



**292: Ogle Construction Co. - Corporate Paperweight Silvered Lead**  
American 1930/40's - 4"T x 3 1/4"W - The Peirce Collection

USD 80 - 120



**293: Atlas Assurance Co. - Aluminum Paperweight**  
Made by Roughnotts - Indianapolis 1930's - 4"T x 2"W

USD 75 - 100



**294: Kraft International Headquarters Corporate Paperweight**  
American Dated 1938 - The Peirce Collection

USD 60 - 80



**295: Eveready Radio Battery Novelty - National Carbon Co. Inc.**  
American 1920's - 3 3/4"T x 4"W - The Peirce Collection

USD 100 - 150



**296: Republic Coal and Coke Co. - Corporate Novelty**  
American 1930's - 3 3/8"T x 4"W - The Peirce Collection

USD 60 - 90

## RSL ONLINE AUCTION - Late Spring 2026



**297: Firestone Supreme Battery - Novelty Box**

USD 100 - 150

Made by Genuine Hard Rubber - American 1950 - 2 5/8"T x 3 1/2"W - The Peirce Collection

---



**298: Sargent and Green Leaf, Inc. - Safe Dial Paperweight**

USD 50 - 75

Rochester, NY. 1950's - 3 7/8"Diameter - The Peirce Collection

---



**299: Cole Steel Equipment Co. Inc. - Safe Dial Paperweight**

USD 50 - 75

New York 1950's - 3 7/8"Diameter - The Peirce Collection

---



**300: Toepfer Safe and Lock Co. - Safe Dial Paperweight**

USD 50 - 75

Milwaukee, WI. 1960 - 3 7/8"Diameter - The Peirce Collection

---



**301: Safe Padlock and Hdw. Co. - Lead / Cast Iron Paperweights**

USD 100 - 150

Lancaster, PA. 1920/30's - 2 1/4"T x 2 1/2"W - The Peirce Collection

---



**302: Yale Lock Cast Iron / Brass Paperweight**

USD 75 - 100

American 1940's - 1 1/2"T x 2"Diameter - The Peirce Collection

---



**303: Two Cast Iron Safe Dial Paperweight - For Yale Locks**

USD 80 - 120

American 1940/50's - 2 1/4"Diameter - The Peirce Collection

---



**304: Kirk Key-Lock - Lock Novelty**

USD 30 - 50

American 1950's - 2 3/4"T x 1 3/4"W - The Peirce Collection

---

**RSL ONLINE AUCTION - Late Spring 2026**

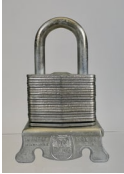


**305: Springs and Formed Wires - Desk Ornament/Letter Holder - For Wickwine Spencer Seel Division**

USD 75 - 100

American 1950's - 3"T x 4"W - The Peirce Collection

---



**306: Master Lock Co. Paperweight**

USD 60 - 90

Milwaukee, WI. 1930's - 4"T x 2 1/2"W - The Peirce Collection

---



**307: Winthrop and Florsheim Shoe Novelties - One Lead/One Composition**

USD 50 - 75

American 1940/50's - 1 1/2"T x 3 1/2"L - The Peirce Collection

---



**308: Florsheim Shoe Novelty - Composition**

USD 50 - 75

American 1940's - 2 1/4"T x 5 1/2"W - The Peirce Collection

---



**309: B.F. Goodrich Aluminum - Shoe Mold Novelty**

USD 40 - 60

American 1950's - 1 1/2"T x 3 1/4"W - The Peirce Collection

---



**310: Lyon and Healy Piano Novelty or Desk Ornament**

USD 125 - 175

By Rehberger MFG. Co. - Chicago, IL. 1950's - 3 1/2"T x 3 1/4"W - The Peirce Collection

---



**311: Apex American Paper Exports, Inc. - Brass Paperweight**

USD 60 - 90

American 1950's - 2 5/8"T x 2 1/4"W - The Peirce Collection

---



**312: O.S. Kelly Co. Piano - Cast Iron Advertising Paperweight**

USD 150 - 200

American 1930/40's - 2"T x 4"W x 4 3/4"D - The Peirce Collection

---

**RSL ONLINE AUCTION - Late Spring 2026**



**313: J.R. Palmenberg's Sons - Cast Iron Advertising Paperweight**

USD 80 - 120

New York 1900 - 2"T x 4"W - The Peirce Collection

---



**314: The A.E. Gordon Lumber Company Ltd. - Brass Advertising Paperweight**

USD 80 - 120

Canadian 1930's - 2 1/2"T x 1 3/4"Diameter - The Peirce Collection

---



**315: The Stetson Shoe Advertising Paperweight - Made of Silvered Brass**

USD 100 - 150

American 1910's - 2 1/4"T x 4"W - The Peirce Collection

---



**316: Tose Moving Truck Advertising Paperweight - Made of Lead**

USD 75 - 100

American 1950 - 2"T x 5"W - The Peirce Collection

---



**317: Horns Box Truck Advertising Paperweight - Made of Cast Iron**

USD 80 - 120

American 1950 - 2"T x 5"W - The Peirce Collection

---



**318: Arthur Dixon Transfer Co. - Advertising Paperweight - Made of Lead**

USD 100 - 150

American 1950 - 2"T x 5"W - The Peirce Collection

---



**319: Timken Axles Advertising Paperweight - Made of Lead or Similar Alloy**

USD 175 - 225

American 1950's - 3"T x 7"W - The Peirce Collection

---



**320: The Flexible Clipper Bus Advertising Paperweight - Made of Lead**

USD 100 - 150

The Flexible Co. - Loudonville, OH. 1950's - 2"T x 7"W - The Peirce Collection

---

## RSL ONLINE AUCTION - Late Spring 2026



**321: Pontiac Advertising Paperweight - made of Lead**

USD 125 - 175

American Circa 1950 - 2"T x 5"L - The Peirce Collection

---



**322: Two Automotive Paperweights - One Brass/One Lead**

USD 125 - 175

One for Five Boro Cab - American 1920/30's - Largest 2"T x 3 1/2"L - The Peirce Collection

---



**323: Kansas Auto Spring Co. - Advertising Desk Fixture - Made of Brass**

USD 100 - 150

American 1930 - 4"T x 5"W - The Peirce Collection

---



**324: Davidson Freight Advertising Paperweight - Made of Lead**

USD 100 - 150

American 1950 - 2"T x 5"W - The Peirce Collection

---



**325: H.C. Roulston Inc. Advertising Paperweight - Made of Lead**

USD 125 - 175

American 1930's - 1 1/2"T x 5"W - The Peirce Collection

---



**326: Alterman Refrigeration Truck - Advertising Paperweight - Made of Lead**

USD 100 - 150

American 1960's - 2"T x 5"W - The Peirce Collection

---



**327: Home Lines Passenger Ship - Advertising Paperweight - Brass attached to Marble**

USD 60 - 90

Made by Bertoni - Milan, Italy 1960 - 3 1/8"T x 5"W - The Peirce Collection

---



**328: Winchester Cal 50 - Advertising Paperweight - Made of Brass**

USD 150 - 200

American 1950 - 2 1/2"T x 5 1/4"W - The Peirce Collection

---

## RSL ONLINE AUCTION - Late Spring 2026



**329: Mitsui O.S.K. Lines Freighter - Advertising Paperweight - Made of Lead**

USD 60 - 90

Probably Japanese 1960's - 1 1/2"T x 7 1/2"L - The Peirce Collection

---



**330: Union Steamships Ltd. - Advertising Paperweight - Made of Lead**

USD 100 - 150

Vancouver, Canada 1950's - 2"T x 5 7/8"L - The Peirce Collection

---



**331: Babcock Submarine Paperweight - Made of Cast Iron**

USD 60 - 90

American 1930's - 2 1/4"T x 4 1/2"W - The Peirce Collection

---



**332: U.S.S. Searaven Paperweight - A Sargo Class Submarine**

USD 150 - 200

American 1939 - 2"T x 7 1/4"L - The Peirce Collection

---



**333: Anchor Shaped Advertising Paperweight - Hartshone's Patent Made of an Alloy Material**

USD 125 - 175

English 1930/40's - 5 1/8"T x 3"W - The Peirce Collection

---



**334: Motor with Propeller Advertising Paperweight - For Hamilton Aero MFG. Co.**

USD 175 - 225

Milwaukee, WI. 1930's - Made of Lead and Aluminum - 2 1/4"T x 9 3/4"W - The Peirce Collection

---



**335: Central Storage and Transfer Co. - Advertising Paperweight - Made of Cast Iron**

USD 125 - 175

American 1920's - 2 1/2"T x 3"Triangular - The Peirce Collection

---



**336: National Molasses Company - Advertising Paperweight - Made of Coppered lead**

USD 100 - 150

American 1950's - 2 1/4"T x 5"W - The Peirce Collection

---

## RSL ONLINE AUCTION - Late Spring 2026



**337: Rochester Bean Exchange - Advertising Paperweight - Made of Brass**  
American 1930 - 1 3/4"T x 3"W - The Peirce Collection

USD 100 - 150



**338: Jaeger Hi-Dump Cement Mixer - Advertising Paperweight - Made of Coppered Lead**  
American 1950's - 2 1/2"T x 5"W - The Peirce Collection

USD 150 - 200



**339: The City Ice & Fuel Co. Advertising Paperweight - Made of Copper Lead**  
Cleveland, OH. - Late 1950's - 3" T x 4 3/4" L - The Peirce Collection

USD 175 - 225



**340: Badcock & More Home Furniture Advertising Paperweight - Brass attached to Lead Base**  
English 1960 - 3 1/2" T x 6 3/4" W - The Peirce Collection

USD 125 - 175



**341: General American Tank Car Corporation Advertising Paperweight - Lead Car Attached to Iron Base**  
Chicago 1930's - 3" T x 6 5/8" L - The Peirce Collection

USD 150 - 200



**342: Blue Diamond Coal Co. Advertising Paperweight - Lead Car Attached to Brass Base**  
American 1940/50's - 2 3/8" T x 6" T - The Peirce Collection

USD 125 - 175



**343: The Petroleum Products Co. Advertising Paperweight - Lead Car Attache to Iron Base**  
Independence, KS. 1930/40's - 3" T x 7 3/4" L - The Peirce Collection

USD 150 - 200



**344: Illinois Casing Company Sausage - Advertising Paperweight - Made of Lead**  
MFG. by N.P. Nelson - Chicago, IL. 1930s 2 1/8" T x 4 3/4" W - The Peirce Collection

USD 80 - 120

**RSL ONLINE AUCTION - Late Spring 2026**



**345: The Atlas Portland Cement Co. Advertising Paperweight - Lead Sack Attached to Brass Base**

USD 100 - 150

Made by the Green Duck Co. Chicago, IL. 1930's - 3 1/4" T x 3 3/4" W - The Peirce Collection

---



**346: S. Karpen & Bros. Furniture Makers Advertising Paperweight - Electroplated Cast Iron**

USD 125 - 175

Chicago 1920's - 2" T x 4" W - The Peirce Collection

---



**347: The Williamson Co. Veneer Manufacturers Advertising Paperweight - Made of Cast Iron**

USD 100 - 150

Baltimore, MD 1930's - 1 3/4" T x 3 1/2" W - The Peirce Collection

---



**348: National Lead Co. Chicago Advertising Paperweight - Made of Silvered Lead**

USD 60 - 90

American 1950 - 2 1/4" T x 2 1/2" W - The Peirce Collection

---



**349: Edmund A. Allen Lumber Co. Advertising Paperweight - Silvered Lead**

USD 75 - 100

American 1930/40's - 2" T x 5" W - The Peirce Collection

---



**350: Olympic Brewing Company Advertising Paperweight**

USD 40 - 60

Made by Bergamot Brass Works - American 1980 - 3" T x 3 1/4" Square - The Peirce Collection

---



**351: Clark Values/ Machinery Advertising Paperweight - Lead Mounted to Wood Base**

USD 40 - 60

American 1970 - 2 1/4" T x 3 3/4" W - The Peirce Collection

---



**352: Clark Paperweight Made of Brass**

USD 75 - 100

American 1950 - 2 1/4" T x 3 1/2" Circular - The Peirce Collection

---

**RSL ONLINE AUCTION - Late Spring 2026**



**353: Helmet Rooster Gural Cast Iron**

USD 100 - 150

American 1930's - 3" T x 3 3/4" W - The Peirce Collection

---



**354: The Maltese Cross Brand - Cedar Lumber Advertising Paperweight - Made of Aluminum**

USD 75 - 100

Seattle, WA 1950's - 3 1/2" T x 2 1/2" Circular - The Peirce Collection

---



**355: Laytons Pigkard Advertising Paperweight - Made of Aluminum**

USD 100 - 150

American 1940/50's - 3 1/4" T x 4 3/8" W - The Peirce Collection

---



**356: W & J Lanyon Spelter Company Advertising Paperweight**

USD 50 - 75

American 1930 - 2 1/2" T x 3 1/4" W - The Peirce Collection

---



**357: Armstrong Bros. Tool Co. Advertising Paperweight - Copper Plated Cast Iron**

USD 125 - 175

American - Dated 1965 - 3 1/4" T x 4 1/2" W The Tom Peirce Collection

---



**358: W & J Lanyon Spelter Co. Pittsburg, KS. Advertising Paperweight**

USD 100 - 150

American 1930 - 3" T x 3 1/4" W - The Peirce Collection

---



**359: American Steel and Wire Company Advertising Paperweight - Marble, Steel Wire and Wood**

USD 100 - 150

American 1930 - 1 7/8" T x 3 3/4" W - The Peirce Collection

---



**360: Bradley Washfountain Co. Advertising Paperweight - Ceramic/Glass/Steel**

USD 175 - 225

American 1930's - 4" T x 4 1/2" Circular - The Peirce Collection

---

## RSL ONLINE AUCTION - Late Spring 2026



**361: Advance Paint Company Advertising Paperweight and Ashtray - Made of Lead**  
American 1930's - 2 1/8" T x 4" W - The Peirce Collection

USD 100 - 150

---



**362: Punch & Judy Theatre Wood & Paper Lithe**  
English 1910 - 3 3/4" T x 4 7/8" W - The Carl & Linda Collection

USD 100 - 150

---



**363: Ideal Milk Chocolate Animals With Noah's Ark**  
Ideal Cocoa & Chocolate Co. Lititz, PA. 1940's - 3" T x 4 7/8" W

USD 100 - 150

---



**364: American Tin Schoolhouse - Extremely Scarce**  
George Brown Company - Forestville, CT. 1880 - 7" T x 5 1/4" W x 5 1/4" D - The Carl & Linda Collection

USD 150 - 200

---



**365: Juno Tin Floor Train with Two Coaches**  
Probably Merriam Company - Connecticut 1880's - 3" T x 17 1/2" Assembled - The Carl & Linda Collection

USD 400 - 500

---



**366: B & W Freight Train - Paper Litho on Wood**  
American 1890 - 4" T x 18" L Assembled - The Carl & Linda Collection

USD 175 - 225

---



**367: Choo- Choo Tinker Railway**  
Made by Toy Tinkers - Evanston, IL. 1940 - 4" T x 13" L - The Carl & Linda Collection

USD 80 - 120

---



**368: Tin Horse with Fabric Cart**  
Probably French - Circa 1970 - 6 1/2" T x 8" L - The Carl & Linda Collection

USD 150 - 200

---

## RSL ONLINE AUCTION - Late Spring 2026



**369: Mule Drawn Coal Wagon - Wood & Paper Litho**

USD 125 - 175

American 1915 - 5" T x 10" L - The Carl & Linda Collection

---



**370: 345 Heavy Teaming Cart Paper Litho & Wood**

USD 175 - 225

Bliss MFG Co. Pawtucket, RI 1890 - 4 3/4" T x 13" L - The Carl & Linda Collection

---



**371: Time! Boxing Toy - Paper Litho & Wood**

USD 125 - 175

American 1910 - 6 1/2" T x 11" W - The Carl & Linda Collection

---



**372: Noah's Ark Dominos**

USD 200 - 250

Made by Crandell's - American - Dated 1882 - Box is 5" L x 15" W - The Carl & Linda Collection

---



**373: Mother Goose A.B.C Book**

USD 80 - 120

By J.W. Bevans - American - Dated 1907 - 6" T x 1 1/2" W - The Carl & Linda Collection

---



**374: Assorted Paper Litho Furniture**

USD 80 - 120

American 1920's - Piano is 3 1/2" T x 4 1/2" W - The Carl & Linda Collection

---



**375: Wooden Building Block Set**

USD 150 - 200

Probably American - Circa 1925 - Box is 7 3/4" T x 12" W - The Carl & Linda Collection

---



**376: Metamorphoses Puzzle Set**

USD 275 - 375

Probably French - Circa 1860 - Box is 7 7/8" T x 8 7/8" W - The Carl & Linda Collection

---

## RSL ONLINE AUCTION - Late Spring 2026

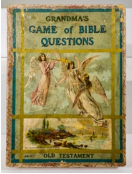


### 377: Nursery Joys Game Set and Puzzle Blocks

USD 175 - 225

American 1890 - Box is 5 3/8" T x 8 3/8" W - The Carl & Linda Collection

---



### 378: Grandma's Game of Bible Questions

USD 80 - 120

McLoughlin Bros. New York City 1900 - Box is 8 1/4" T x 6" W - The Carl & Linda Collection

---



### 379: Patriotic Set of ABC Blocks with Images - Paper Litho on Wood

USD 200 - 250

American 1900 - A Block is 4" T x 2 1/2" W x 2 1/2" D - The Carl & Linda Collection

---



### 380: Cleopatra's Needle - Rare - The Obelisk Alphabet Block

USD 300 - 400

Made by E.I.H. New York City 1880 - 33" T x 7" W Assembled - The Carl & Linda Collection

---



### 381: Mammoth ABC Junior Block Set & Bank - Paper Litho & Wood

USD 250 - 325

Made by E.I.H 1881 - 21 1/2" T x 5 1/2" W x 5 1/2" D Assembled - The Carl & Linda Collection

---



### 382: Mother Hubbard's Party Toy - Paper Litho & Wood

USD 300 - 400

American - Circa 1890 - Depicts Fairy Tale Subjects - 8" T x 18 1/4" W - The Carl & Linda Collection

---



### 383: Punch & Just Pop Up Theatre - Paper Litho & Wood

USD 350 - 480

English 1895 - 11" T x 13 1/2" W - The Carl & Linda Collection

---



### 384: Gnome Roulette Game

USD 250 - 350

German 1915 - Box is 12" Square - The Carl & Linda Collection

---

## RSL ONLINE AUCTION - Late Spring 2026



### 385: The Roly Poly Game

USD 125 - 175

Parker Brothers INC. Salem, NY. 1930 - Box is 13 1/2" T x 10 1/2" W - The Carl & Linda Collection

---



### 386: Clipper Ship Jigsaw Puzzle

USD 175 - 225

McLoughlin Bro's - N.Y. City 1895 - Puzzle is 23" T x 17" W Assembled - The Carl & Linda Collection

---



### 387: Nursery Rhyme Ten Pins - Paper Litho & Wood

USD 200 - 250

Probably English - Circa 1915 - Each pin is 8 5/8" Tall - The Carl & Linda Collection

---



### 388: Native American Knockdowns - Eight in Total - Paper Litho & Wood

USD 150 - 200

American 1910- 7 1/8" T x 2 3/8" - The Carl & Linda Collection

---



### 389: Funny Figured Nine Pin Set

USD 250 - 325

Probably English 1905 - Each 6 7/8" Tall - The Carl & Linda Collection

---



### 390: Japanese Kimono Wearing Ten Pin Set - Paper Litho on Wood

USD 275 - 375

Probably American 1910 - 12 1/8" T x 3 1/8" W - The Carl & Linda Collection

---



### 391: Reproduction Three Wheeled Cary

USD 80 - 120

H. Paya - Spanish 1990's - Box is 9 3/8" T x 7 3/8" L

---



### 392: Overland Circus Calliope Wagon

USD 250 - 325

Kenton Hardware, Kenton, OH. 1939 - 7 1/2" T x 12 7/8" L

---

## RSL ONLINE AUCTION - Late Spring 2026



### 393: Overland Circus Bandwagon - Early Version

USD 300 - 400

Kenton Hardware, Kenton, OH. 1939 - 7 1/2" T x 15 1/4" L

---



### 394: Sheffield Farm Company Milk Wagon

USD 250 - 325

American 1930's - 9 1/8" T x 21 7/8" L

---



### 395: Borden's Milk Wagon - Rare Large Size with Driver

USD 550 - 750

Made by Rich Toys - Morrison, IL. 1930's - 13 3/4" T x 29" L

---



### 396: Five Animal Banks

USD 60 - 90

American 1920/30's - Largest is 7 1/4" T x 6 5/8" L

---



### 397: Four Tin Still Banks

USD 60 - 90

American/German 1880 to 1930's - 4 1/8" T x 4" W

---



### 398: Early Cast Iron Car

USD 30 - 50

American 1915 - 2 3/4" T x 5" L

---



### 399: Three Silvered Tin Banks

USD 75 - 100

European 1920/30's - Red Riding Hood is 4" T x 4 1/4" L

---



### 400: Three Animal Banks

USD 60 - 90

A.C. Williams Co. - American/Japanese - Largest is 6 1/4" T x 4 1/4" W

---

## RSL ONLINE AUCTION - Late Spring 2026



### 401: Three Building Banks

USD 40 - 60

American 1900 to 1950 - 4"T x 5 1/8"D

---



### 402: Two Globe/Baseball for Baseball on Three Balls

USD 50 - 75

American 1915/1960 - Tall Globe is 5"T x 3 1/2"Diameter

---



### 403: Four Bust Banks

USD 60 - 90

American 1930's to 1960 - 6 1/8"T x 4"W

---



### 404: Four Bust Banks

USD 75 - 100

American 1930's to 1950's - 6"T x 3 3/4"W

---



### 405: Chin Up Club Lighthouse

USD 80 - 120

Oregon 1930's - 13"T x 8 1/8"Square

---



### 406: Time is Money Tin Mechanical Bank

USD 100 - 150

Japanese 1950's - 8 1/2"T x 4 3/4"W

---



### 407: Two Fish Tank Style Glass Still Banks

USD 60 - 90

American 1950 - 5"T x 5"W

---



### 408: Five Assorted Banks

USD 50 - 75

Most American 1930's to 1980's - 11 1/4"T x 3"W

---

## RSL ONLINE AUCTION - Late Spring 2026



### 409: Eight Plastic Banks

USD 75 - 100

Most Japanese or Hong Kong 1960/1970's - Largest box is 8 3/4"T x 4 1/4"W

---



### 410: Three Mechanical Banks

USD 120 - 150

Two American/One Japanese - 1920 to 1960's - Largest is 6 3/4"T x 9 1/2"L

---



### 411: Penny Bank Shooting Gallery

USD 80 - 120

Made by Hasbro - Pawtucket, RI. 1968 - Box is 7 1/2"T x 14 1/8"L

---



### 412: Three Plastic/Tin Banks

USD 60 - 90

American or Japanese - Largest 9 1/4"T x 9 3/8"L

---



### 413: Nine Plastic Trucks etc. / Seven are Banks

USD 50 - 75

American/Japanese 1950 to 1970's - Largest 4 3/8"T x 11 1/8"L

---



### 414: Assorted Plastic/Celluloid Roly Polys or Pencil Sharpeners - 52 total

USD 125 - 175

Japanese 1930's to 1970's - Largest is 3 3/4"T x 1 1/4"W

---



### 415: Five Sheet Steel Banks

USD 100 - 150

American 1890's to 1910's - Largest is 5 5/8"T x 3 5/8"W

---



### 416: Five Celluloid/Plastic Windup Toys

USD 60 - 90

American 1950/60's - Largest 8 1/4"T x 4 3/4"Circular

---

## RSL ONLINE AUCTION - Late Spring 2026



### 417: Four Animal Themed Dexterity Puzzles

USD 80 - 120

American 1920/30's - 5"L x 3 1/2"W

---



### 418: Three Tin/Plastic Dexterity Puzzles

USD 75 - 100

By R.C. Cox Company - American 1930's - 5 1/8"L x 3 1/2"W

---



### 419: Four Tin/Glass/Cardboard Dexterity Puzzles

USD 80 - 120

American 1940's/50's - 5"L x 3 1/2"W

---



### 420: Five Dexterity Puzzles - Three Army Related/Two Hunting Related

USD 100 - 150

American 1930/40's - 5"L x 4"W

---



### 421: Five Assorted Dexterity Puzzles - Tin/Glass/Cardboard

USD 80 - 90

American 1930/40's - 3 1/2"L x 5"W

---



### 422: Five Assorted Dexterity Puzzles

USD 80 - 120

American 1930/40's - Largest 5"L x 4"W

---



### 423: Five Assorted Dexterity Puzzles - Tin/Glass/Plastic/Cardboard

USD 100 - 150

American 1930/40's - 5"L x 3 1/2"W

---



### 424: Five Assorted Dexterity Puzzles

USD 75 - 100

American/English 1930's to 1950's - Largest 5 1/8"L x 4"W

---

**RSL ONLINE AUCTION - Late Spring 2026**



**425: Five Assorted Dexterity Puzzles**

USD 100 - 150

American/English 1930/40's - 5 1/8"L x 4 1/8"W

---



**426: Assorted Dexterity Puzzles - 14**

USD 125 - 175

American/English/Japanese - 1930's to 1960's - Largest 4 1/2"Circular

---



**427: Eight Tin/Steel Still Banks**

USD 40 - 60

American 1900 to 1930 - Largest 5"T

---



**428: Circular Pocket Saving Banks - 29**

USD 100 - 150

American 1900's to 1930's - Most about 2 1/2"Tall

---



**429: Two Building Banks**

USD 50 - 75

American 1880/1915 - Taller is 5 1/2"T

---



**430: Baileys Bell/Coin Basket**

USD 50 - 75

American 1890/1900 - Bell is 5"T x 4 1/2"W

---



**431: Seven Tin Banks**

USD 40 - 60

Most American - 1920 to 1960 - Truck is 1 1/2"T x 6"L

---



**432: Two Elephant Mechanical Bank**

USD 50 - 75

American/Japanese 1950's/2000's - Grey one is 5"T x 7"L

---

## RSL ONLINE AUCTION - Late Spring 2026



### 433: Three Camel Bank - Two Small/One Large

USD 100 - 150

A.C. Williams Co. - Ravenna, OH. 1920 - Large is 7 1/8"T

---



### 434: Four Assorted Banks

USD 40 - 60

American/English 1920 to 1960 - Drawers are 4 1/2"T x 4"W

---



### 435: Three Tin Banks

USD 40 - 60

American/English - 1930 to 1979 - Tallest 7 5/8"T x 7 1/2"Circular

---



### 436: Two Mechanical Banks - Uncle Remus/Wireless

USD 75 - 100

American 1920/1970 - Wireless is 4 3/4"T x 6 5/8"W

---



### 437: Tin Church Cigar Cutter/Bank

USD 75 - 100

German 1915 - 12 3/4"T x 7 1/4"D

---



### 438: Three Truck / Bus Banks

USD 30 - 50

American / Japanese 1950's - Bus is 4 1/4"T x 10 1/4"L

---



### 439: Bakelite/Plastic Pencil Sharpeners - 6

USD 60 - 90

American 1940/50's - Small size

---



### 440: Bakelite Tank Pencil Sharpeners - 7

USD 80 - 120

American 1930/40's - Small size

---

**RSL ONLINE AUCTION - Late Spring 2026**



**441: Revolver Pencil Sharpeners - 12**

USD 100 - 150

American 1930/40's - Small size

---



**442: Bakelite Pencil Sharpeners - 16**

USD 100 - 150

American 1930/40's - Small size

---



**443: Bakelite Pencil Sharpeners - 15**

USD 100 - 150

American 1930/40's - Small size

---



**444: Car/Bus Lead Pencil Sharpeners - 9**

USD 80 - 120

American/Japanese/German 1930 to 1960 - Small size

---



**445: Tin and Lead Clock Pencil Sharpeners - 11**

USD 80 - 120

American/German 1920 to 1940 - Small size

---



**446: Assorted Lead Pencil Sharpeners - 14**

USD 100 - 150

American/German 1930/40's - Small size

---



**447: Five Globe Pencil Sharpeners**

USD 75 - 100

American/Japanese 1930 to 1960 - Tallest is 3 1/2"T

---



**448: Lead People Pencil Sharpeners - 7**

USD 80 - 120

American 1930/40's - Small size

---

**RSL ONLINE AUCTION - Late Spring 2026**



**449: Lead Airplane/Lamp Pencil Sharpeners - 6**

USD 80 - 120

American 1930's - Small size

---



**450: Assorted Lead Pencil Sharpeners - 10**

USD 100 - 150

American/German 1930/40's - Small size

---



**451: Lead Instrument Pencil Sharpeners - 7**

USD 80 - 120

American/German 1930/40's - Small size

---



**452: Clocks/Telephone Pencil Sharpeners - 9 Bakelite or Lead**

USD 100 - 150

American/German 1930/40's - Small size

---



**453: Lead Pencil Sharpeners / Most are Dogs - 10**

USD 100 - 150

American/German 1930/40's - Small size

---



**454: Assorted Pencil Sharpeners**

USD 60 - 90

American/German 1930's - Small

---



**455: Food Related/Radio Pencil Sharpeners - 14**

USD 80 - 120

American 1930/40's - Small

---



**456: Assorted Small Items - 20 - Some Pencil Sharpeners**

USD 30 - 75

American 1930/40's - Small

---

**RSL ONLINE AUCTION - Late Spring 2026**



**457: Binocular/Camera Pencil SHarpeners - 7**

USD 80 - 120

American/German - 1920/30's - Small

---



**458: Plastic Pencil Sharpeners - 14**

USD 60 - 90

Most Japanese -1960 - Largest is 5" L

---



**459: Largest Group of Plastic Pencil Sharpeners - 19**

USD 60 - 90

Most Japanese - 1950/60's

---



**460: Assorted Pencil Sharpeners - 10**

USD 40 - 60

Most Japanese - 1950/60's

---



**461: Three Pencil Sharpeners**

USD 25 - 35

Japanese - 1950/70's - Small

---



**462: Modern Lead Pencil Sharpeners - 13 - Most are Souvenirs**

USD 50 - 75

Japanese - 1960/70's - Small

---



**463: Lion Beating a Drum - Paper Litho/ Wood/ Tin**

USD 30 - 50

American 1950's - 9 3/4" T x 10" L

---



**464: Flash Light Electric Alarm and Bank Clock**

USD 50 - 75

American March 16, 1906 - 9" T x 12 1/4" L

---

**RSL ONLINE AUCTION - Late Spring 2026**



**465: Three Hole in One Banks - Mint in Box**

USD 80 - 120

Japanese 1960 - Box is 4" T x 9 1/4" L x 4" D

---



**466: U.S. Postal Service Steel Bank**

USD 30 - 50

Brooklyn, NY 1970 - Box is 9 1/4" T x 5" W x 5" D

---



**467: Seven Book**

USD 15 - 25

American 1950's to 1970's - Largest is 8" T x 6" W

---